

**PORTA
& CO.**

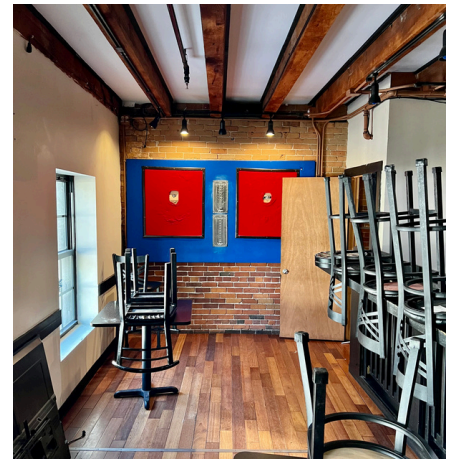
FOR LEASE: Old Port Retail

420 Fore Street | Portland, ME



Property Highlights

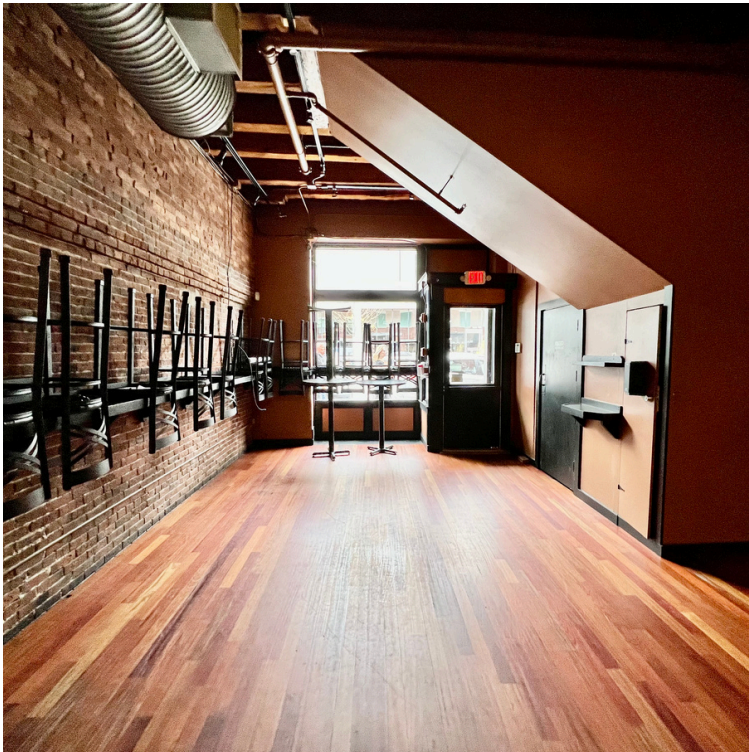
- 2,200 ± SF of retail/bar space on Fore Street with excellent visibility.
- Located in the heart of the Old Port with restaurants, hotels, local and national retailers
- Lease Rate: \$50.00/SF MG



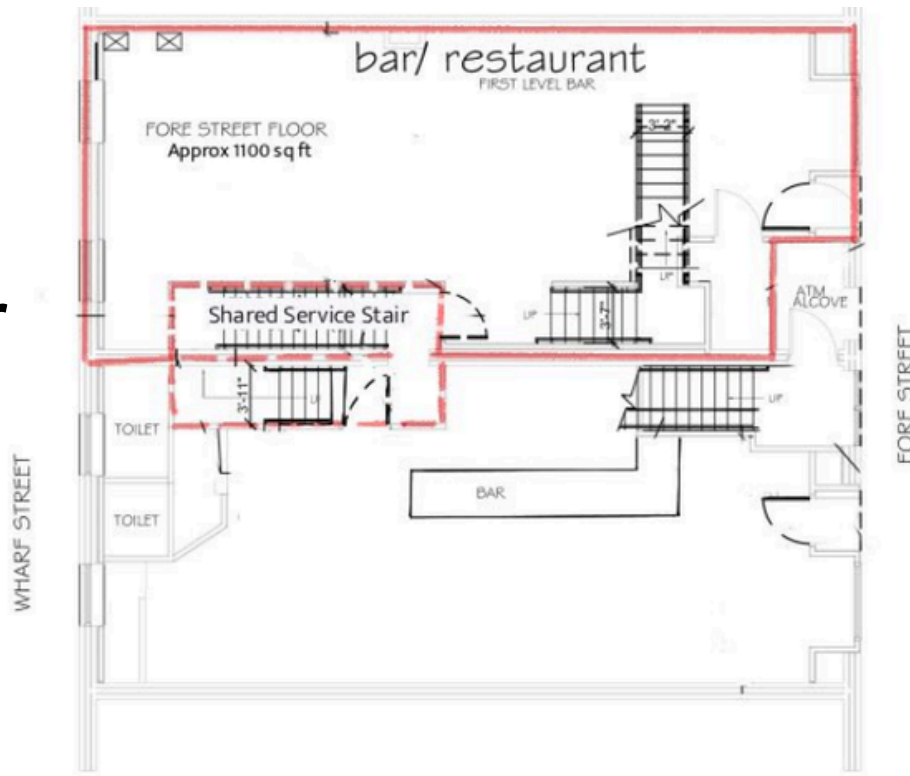
PORTA & CO. | 30 Milk Street, Second Floor | Portland, ME 04101 | (207)-747-1515

www.portacompany.com

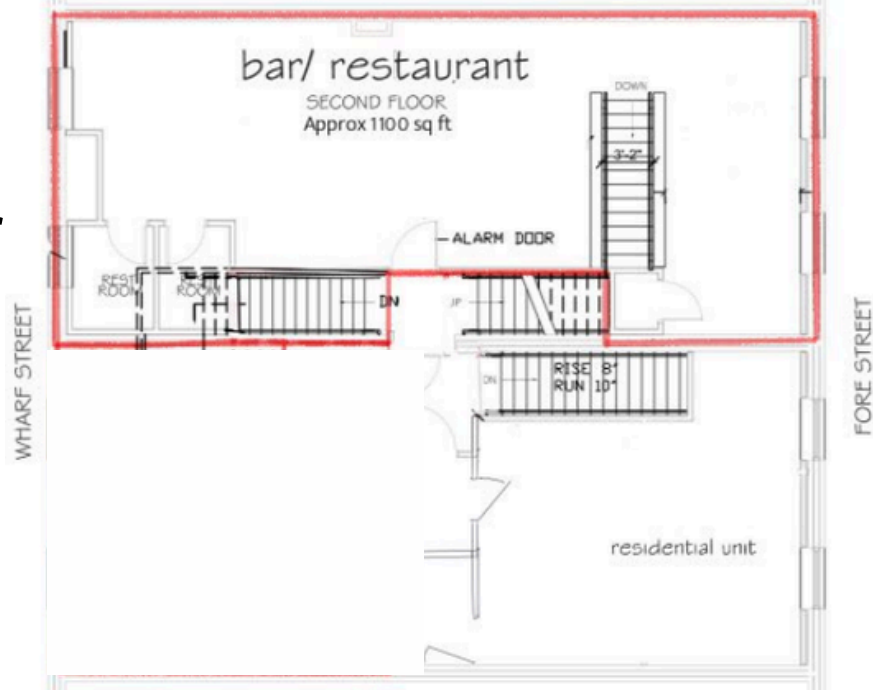
Owner	416 FORE STREET HOLDINGS, LLC
Suite Size	2,200 ± SF
Utilities	Municipal water/sewer, Natural Gas, Electric
HVAC	Hot water baseboard heat
Parking	On street, garage across the street
Floor Plan	Traditional bar lay out
Signage	Building Mounted/ Awning
Zoning	B3 DEOZ
Lease Rate	\$50.00/SF MG



First Floor



Second Floor

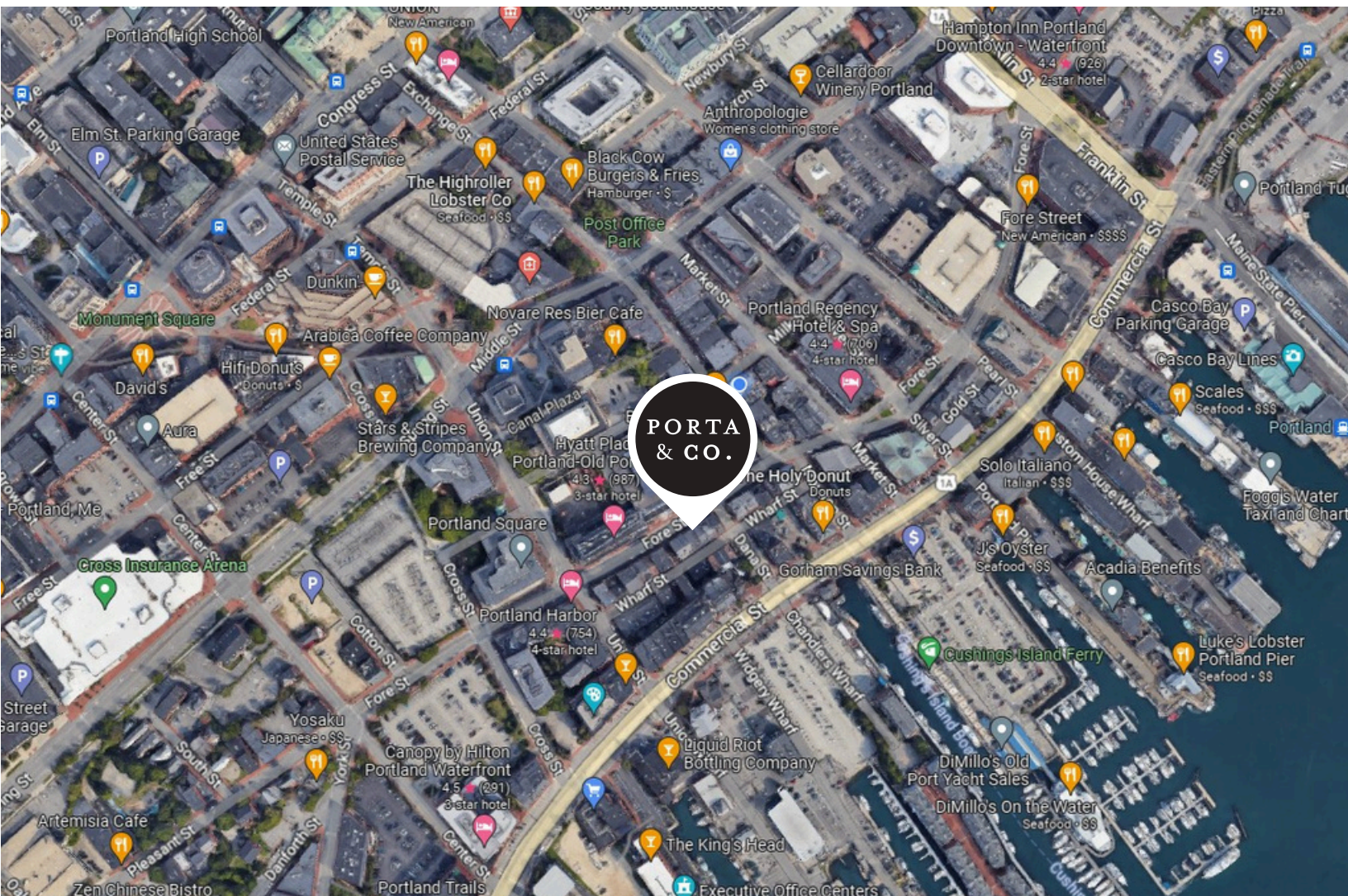


PORTA
& CO.

Property Photos

420 Fore Street | Portland, ME





CONTACT



Mackenzie Simpson
 Broker
 C: 207-310-0221
 O: 207-558-0885
msimpson@portacompany.com



Emmett Peoples
 Associate Broker
 C: 207-400-4939
 O: 207-747-1515
epeoples@portacompany.com

This information has been obtained from sources believed reliable and is intended for informational use only. The information contained herein has not been verified for accuracy or completeness. It is recommended that prospective tenants and buyers conduct their own inspection of the property and verify all information. Any reliance on this information is solely at your own risk. Photos herein are the property of their respective owners. Use of these images without the express written consent of the owner is prohibited.