

**PORTA  
& CO.**

# FOR LEASE: ARTS DISTRICT RETAIL

582-584 Congress Street | Portland, ME



## Property Highlights

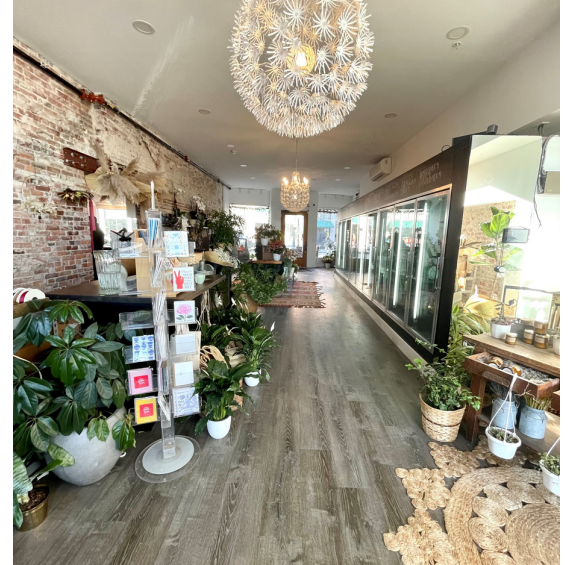
- 680-1,555± SF of retail space on Congress Street with prime visibility. Can be subdivided into two spaces.
- Portland Museum of Art, State Theatre, Eastland Hotel, Starbucks all in immediate area
- Basement storage and office included. Billboard mural available to rent.
- Lease Rate: \$2,500/month to \$5,850/month NNN



**PORTA & CO.** | 30 Milk Street, Second Floor | Portland, ME 04101 | (207)-747-1515

[www.portacompany.com](http://www.portacompany.com)

<b>Owner</b>	582-584 CONGRESS STREET LLC
<b>Suite Size</b>	1,555± SF
<b>Book/Page</b>	Book 39844, Page 245
<b>Utilities</b>	Municipal water/sewer, Natural Gas, Electric
<b>HVAC</b>	Hot water baseboard heat
<b>Parking</b>	On street, garages close by
<b>Floor Plan</b>	Divisible retail, two spaces connected
<b>Signage</b>	Building Mounted/ Awning
<b>Zoning</b>	B3 DEOZ
<b>Lease Rate</b>	\$2,500 to 5,850/Month NNN



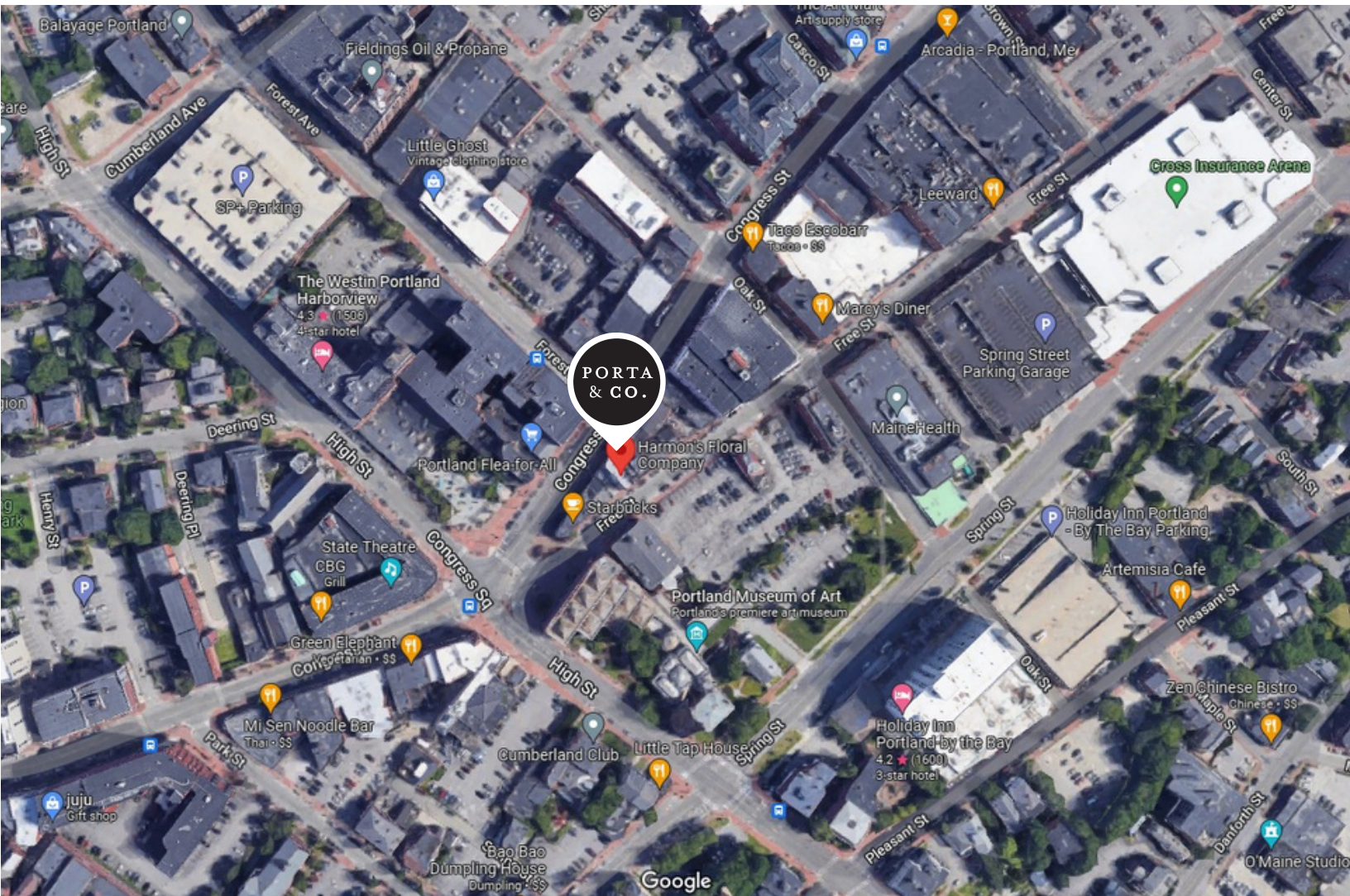


PORTA  
& CO.

# Photos

582-584 Congress Street | Portland, ME





## CONTACT



**Mackenzie Simpson**

Broker

C: 207-310-0221

O: 207-558-0885

[msimpson@portacompany.com](mailto:msimpson@portacompany.com)

This information has been obtained from sources believed reliable and is intended for informational use only. The information contained herein has not been verified for accuracy or completeness. It is recommended that prospective tenants and buyers conduct their own inspection of the property and verify all information. Any reliance on this information is solely at your own risk. Photos herein are the property of their respective owners. Use of these images without the express written consent of the owner is prohibited.

**PORTA & CO.**

COMMERCIAL REAL ESTATE

30 Milk Street, Second Floor  
Portland, ME 04101  
207-747-1515  
[www.portacompany.com](http://www.portacompany.com)