

Land For Sale

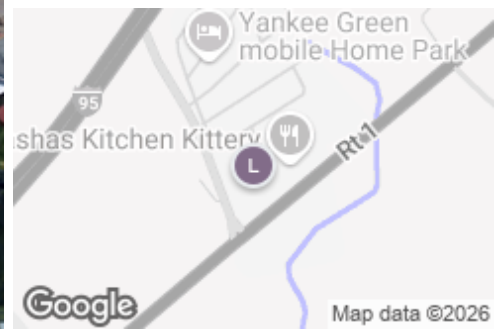
Retail Pad Site

429 US Rt 1, Kittery, ME, 03904

Land For Sale

Prepared on January 22, 2026

1 of 1 Listings



Listing Details | Land For Sale

Secondary Uses	Retail	Days On Market	440 days
Total Available Space	1.21 Acres	Date Listed	11/08/2024
Asking Price	\$825,000	Last Modified	1/13/2026
Listing Price Per SF	-	Listing ID	41347097
List Price Per Acre	\$681,818	Parking Spaces	-
Cap Rate (Actual)	-	Electric Service	-
Terms	Cash to Seller	Water	-
Show Instructions	Call broker	Sanitary Sewer	-
Available Date	Now		

Description

This is an Excellent Retail location in Kittery. Direct Route 1 access and adjacent to an intersection. Access from two roads. Mixed Use zoning opens the possibilities for several permitted uses for development as needed. Ideal Pad Site with 1.21 acres and two potential access points. Features 161+/- Feet of Frontage on Rte 1, and 104+/- Feet of frontage on Cutts Road, for excellent visibility. Building on Property is currently used as an 8 unit boarding house, in good condition, and not expected to be useful for developing for retail. Nearby Businesses include a Sonoco Gas station, Maine Beer Cafe, When Pigs Fly Restaurant, Auto Spa Car Wash, Dunkin Donuts, and a very short distance to Adidas Store at Kittery Outlets.

Property Features

Location Details

Address	429 US Rt 1, Kittery, ME, 03904	County	York
Zoning	MU	Name	429 Us-1

Building Details

Sub Type	Mixed Use
Building Status	Existing
Building Size	2,462 SF
Land Size	1.29 Acres / 56,192 SF
Number of Buildings	1
Number of Floors	2

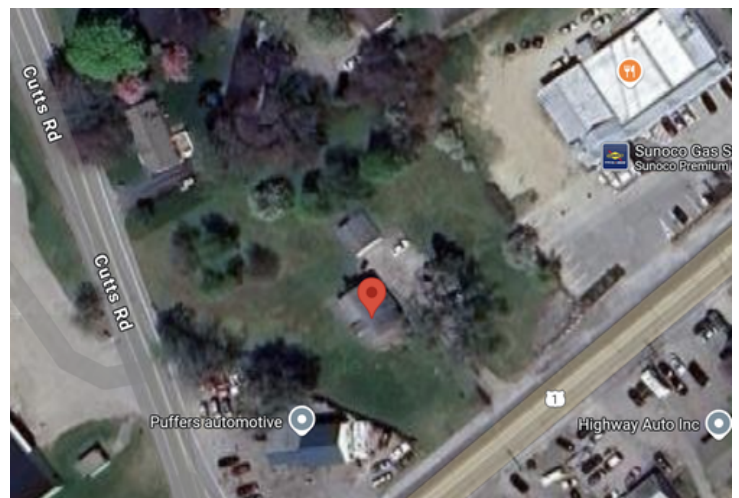
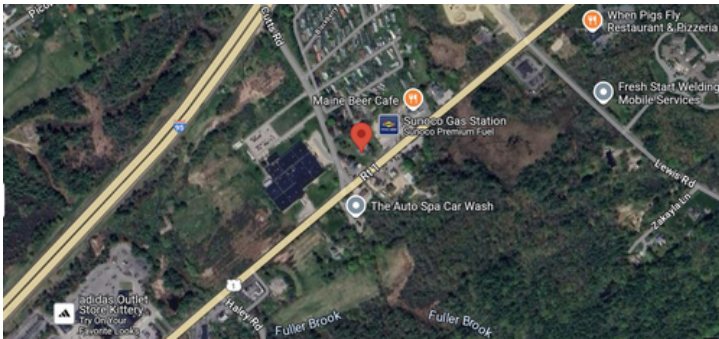
Year Built	1920
Primary Constr. Type	Wood
Occupancy Type	Multi-tenant
Parking Spaces	-
Parking Ratio	-

Property Listings

1 Listing | 52,707.60 SF | \$825,000

Type	Condo	Space Use	Suite	Available Space	Rate	Available
For Sale	-	Residential	-	1.21 Acre	\$825,000	Now

Additional Photos





Contact



Gerry O'Connell
603-610-8950
gerry@oconnellre.com



Nearby Retail

