

FOR LEASE

INDUSTRIAL
BUILD-TO-SUIT



**0 COMMERCE DRIVE, LOT 55
BRUNSWICK, ME 04011**

PROPERTY HIGHLIGHTS

- ◆ 3.43± acre build-to-suit site
- ◆ Located in the heart of Brunswick Landing
- ◆ Ideal for distribution, logistics, and warehousing
- ◆ Site can accommodate a 32,000 – 38,000± SF industrial building
- ◆ Area businesses include Maine Technology Institute, Southern Maine Community College, Firstlight, SaviLinx, Flight Deck Brewing, Molnycke Health Care, Wild Oats Bakery, Vivid Cloud, Shoreline Detail Pros, New England Tenant and Awning Co. and Bamforth Marine



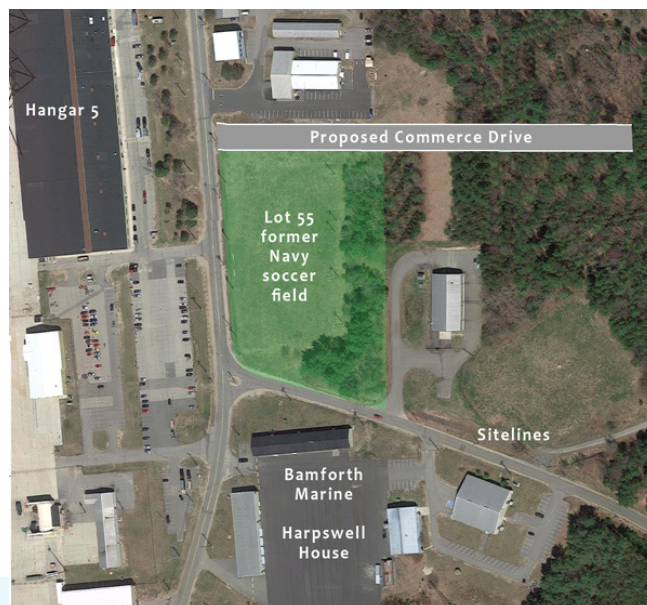
FOR LEASE

0 COMMERCE DRIVE, LOT 55
BRUNSWICK, ME 04011



PROPERTY DETAILS

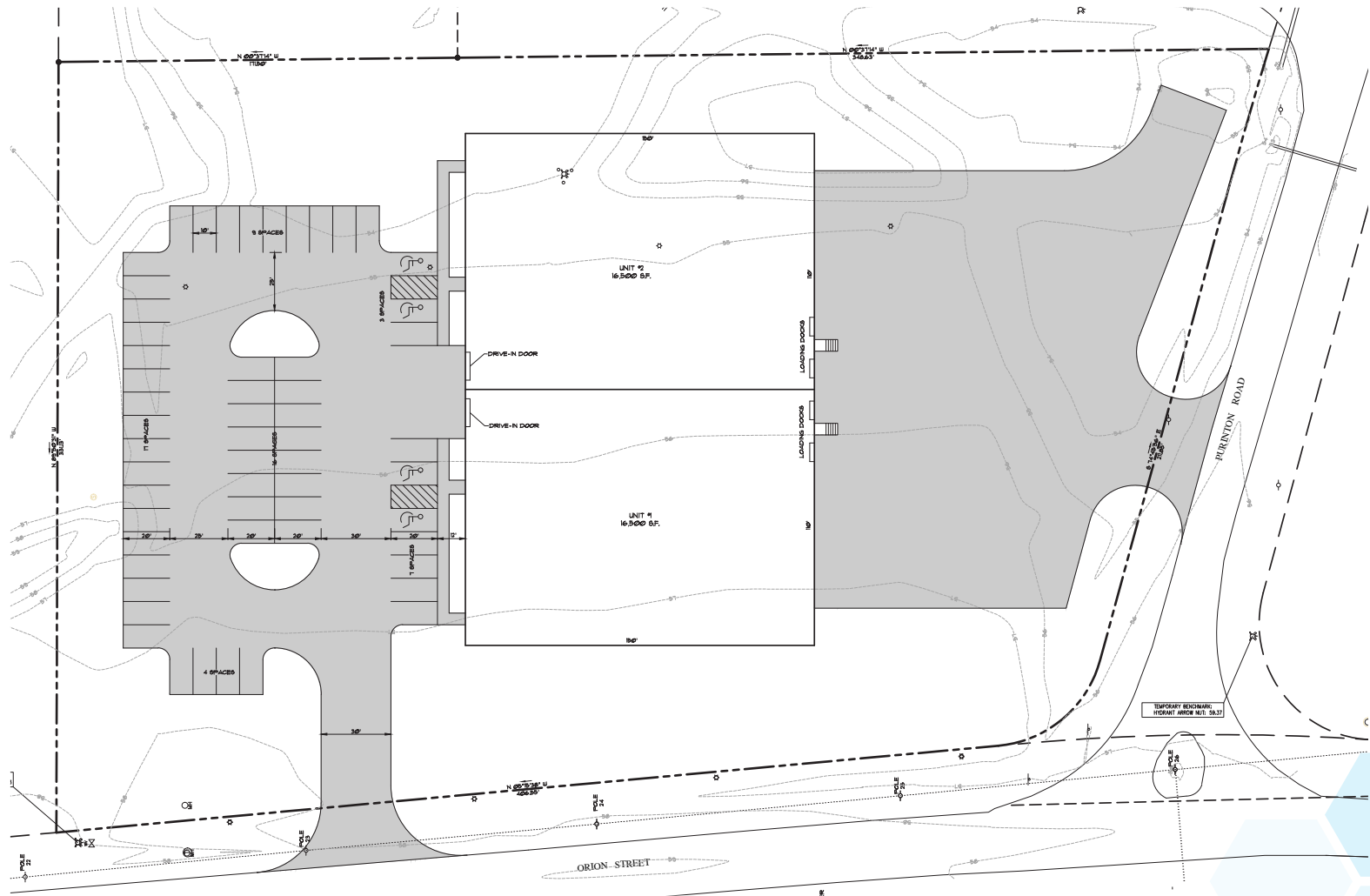
OWNER	Brunswick Real Estate Holdings, LLC
ASSESSOR	Map 40, Lot 49
BOOK/PAGE	39889/0099
POTENTIAL BUILDING SIZE	32,000 - 38,000± SF
LOT SIZE	3.43± AC
OVERHEAD DOORS/DOCKS	Two (2) overhead doors and up to four (4) loading docks
CEILING HEIGHT	18' to 24'
UTILITIES	Water, sewer and electric at street
ZONING	GI - Growth Industry
REAL ESTATE TAXES (Est.)	\$1,828.47
LEASE RATE	\$12.00/SF NNN
AVAILABILITY	Twelve (12) months from lease execution



FOR LEASE

0 COMMERCE DRIVE, LOT 55
BRUNSWICK, ME 04011

CONCEPTUAL PLAN





CONTACT US



CHRIS PASZYC, CCIM, SIOR
 MANAGING PARTNER
 207.939.4147 C
 CPASZYC@BOULOS.COM



CHRIS ROMANO
 ASSOCIATE
 207.233.1792 C
 CROMANO@BOULOS.COM



TRIPP CLARK
 ASSOCIATE
 978.992.6004 C
 TCLARK@BOULOS.COM

©2026 The Boulos Company, Inc. All rights reserved. This information has been obtained from sources believed reliable, but has not been verified for accuracy or completeness. You should conduct a careful, independent investigation of the property and verify all information. Any reliance on this information is solely at your own risk. The Boulos Company and The Boulos Company logo are service marks of The Boulos Company, Inc. All other marks displayed on this document are the property of their respective owners. Photos herein are the property of their respective owners. Use of these images without the express written consent of the owner is prohibited.