

Star Market at West Roxbury

992 SF Available

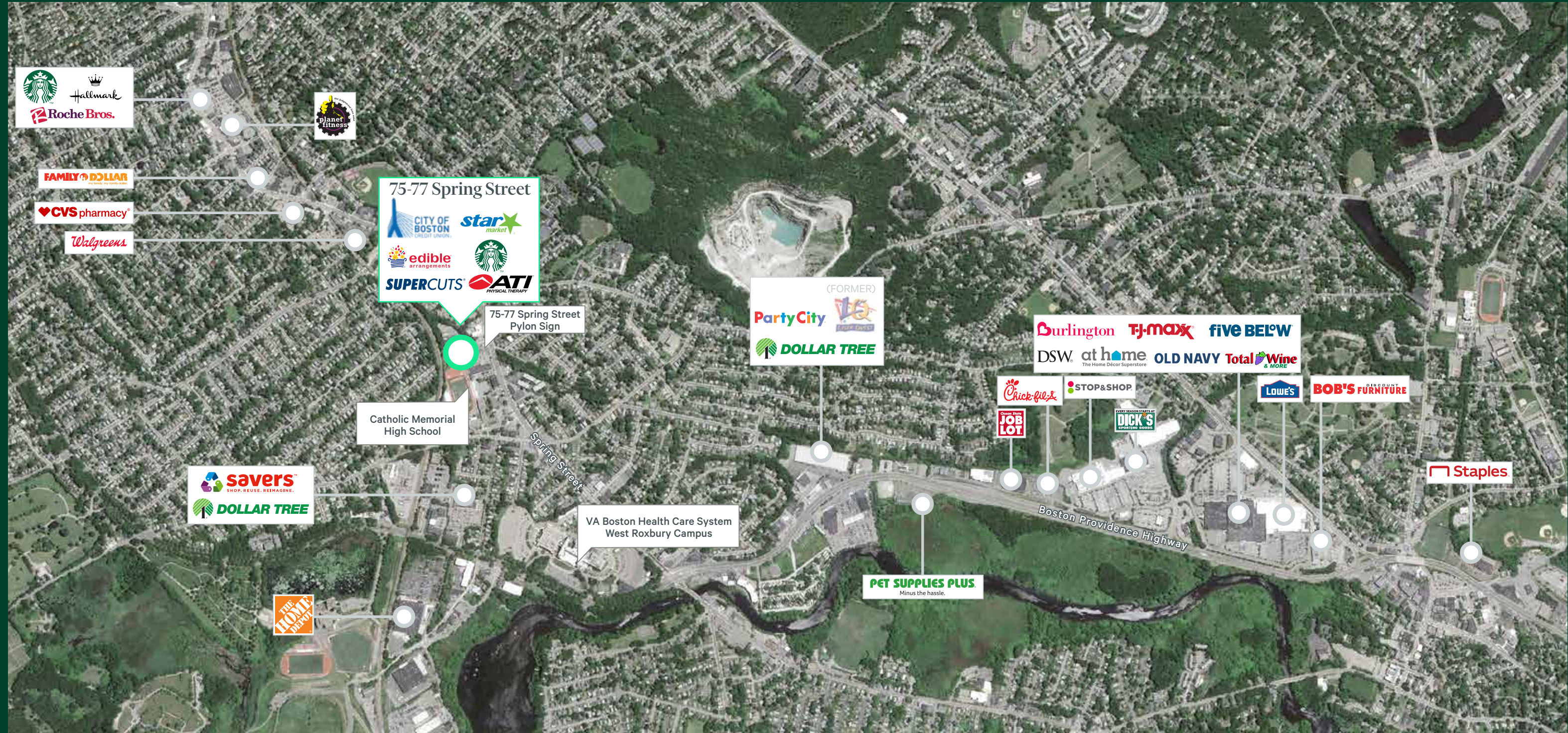
75-77 Spring Street
West Roxbury, Massachusetts



Features

- + Strong Star Market-anchored center with nearby household incomes of over \$150,000
- + Extremely dense market with 133,363 people within three miles
- + An average of 17,083 cars per day drive by the center
- + Easily accessible by heavily traveled Interstate 95 (124,800 cars per day), Route 1 (52,000 cars per day) and VFW Parkway (32,200 cars per day)
- + Adjacent to Catholic Memorial High School (1,000 students)
- + Within 0.25 miles of the VA Hospital of West Roxbury, one of only two major VA campuses in the Boston area
- + Access at a signalized intersection

Retail Market

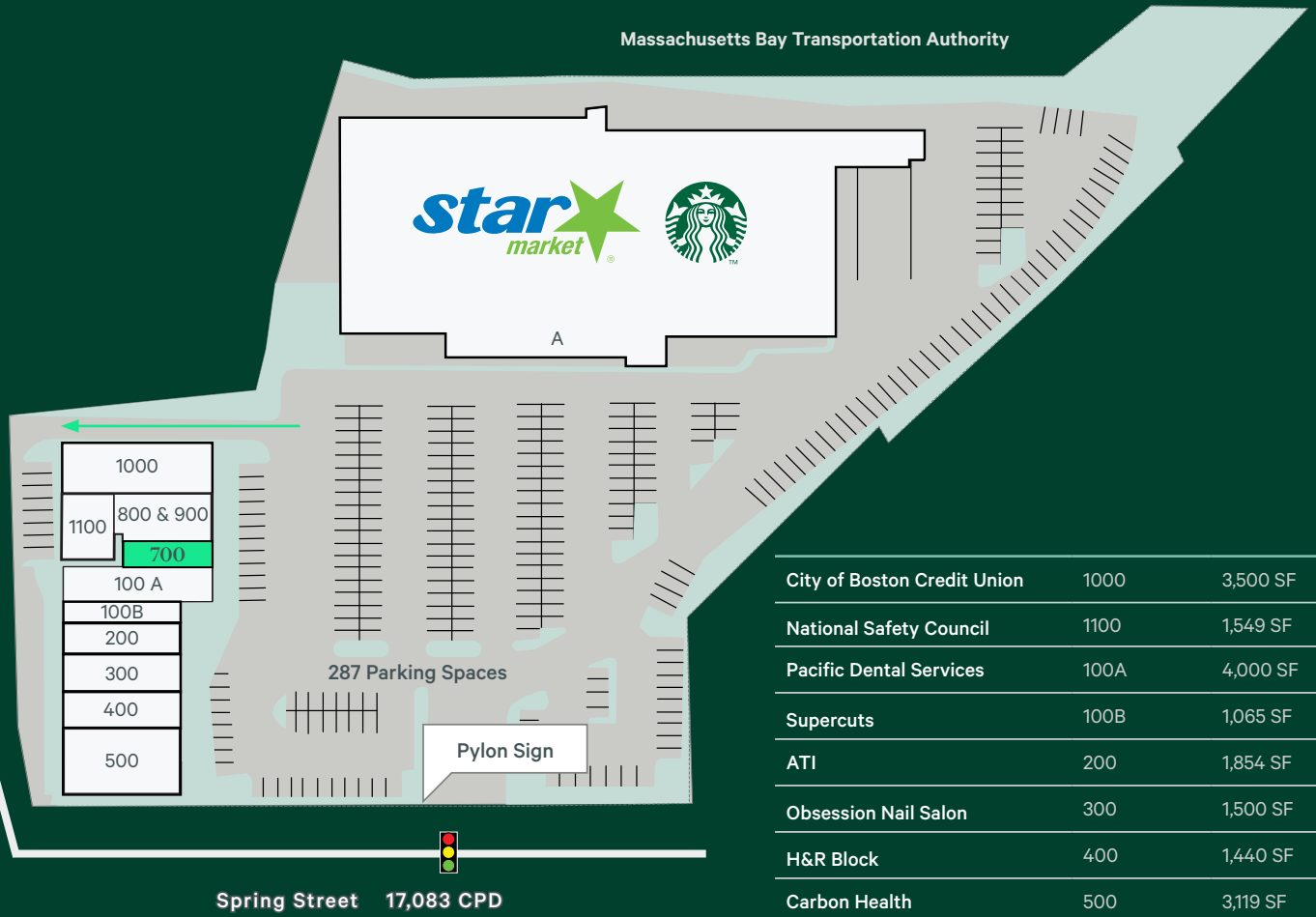


2023 Demographics	1 Mile	2 Miles	3 Miles
Estimated Population	18,742	65,893	133,383
Estimated Households	7,858	27,253	52,781
Estimated Average Household Income	\$166,185	\$157,270	\$159,194
Estimated Daytime Population	18,430	53,608	117,733

Star Market at West Roxbury

75-77 Spring Street | West Roxbury, Massachusetts

For Lease



City of Boston Credit Union	1000	3,500 SF
National Safety Council	1100	1,549 SF
Pacific Dental Services	100A	4,000 SF
Supercuts	100B	1,065 SF
ATI	200	1,854 SF
Obsession Nail Salon	300	1,500 SF
H&R Block	400	1,440 SF
Carbon Health	500	3,119 SF
Available (Edible Arrangements)	700	992 SF
Sea Legs Integrative Veterinary Health	800 & 900	2,114 SF
Star Market	A	54,928 SF

Contact Us

John Ferris

Senior Vice President
+1 617 912 6871
john.ferris@cbre.com

Roberto Cordero

Senior Associate
+1 617 912 6818
roberto.cordero@cbre.com

Zack Mittelstadt

Associate
+1 207 860 0376
zack.mittelstadt@cbre.com

© 2024 CBRE, Inc. All rights reserved. This information has been obtained from sources believed reliable but has not been verified for accuracy or completeness. CBRE, Inc. makes no guarantee, representation or warranty and accepts no responsibility or liability as to the accuracy, completeness, or reliability of the information contained herein. You should conduct a careful, independent investigation of the property and verify all information. Any reliance on this information is solely at your own risk. CBRE and the CBRE logo are service marks of CBRE, Inc. All other marks displayed on this document are the property of their respective owners, and the use of such marks does not imply any affiliation with or endorsement of CBRE. Photos herein are the property of their respective owners. Use of these images without the express written consent of the owner is prohibited.

<https://retailproperties.cbre.us>

CBRE