



Brady Sullivan Properties
670 N. Commercial Street
Manchester, nh 03101
603.622.6223

Notice:
This drawing is the property of Brady Sullivan Properties. The use, re-use or reproduction of this drawing for any purpose whatsoever without an expressed written agreement between BSP and the user is prohibited. Rights to use the information on this sheet are not transferred until payment has been received for services rendered. Any rights so granted are non-transferable to other parties without the prior expressed written consent of BSP.
© 2015 Brady Sullivan Properties

Owner
BRADY SULLIVAN PROPERTIES
MANCHESTER NH

Project
1750 ELM STREET
MANCHESTER NH

SUITE 803
3,090 SF

Seals

Issues	
Date	Description

Revisions		
No.	Date	Description

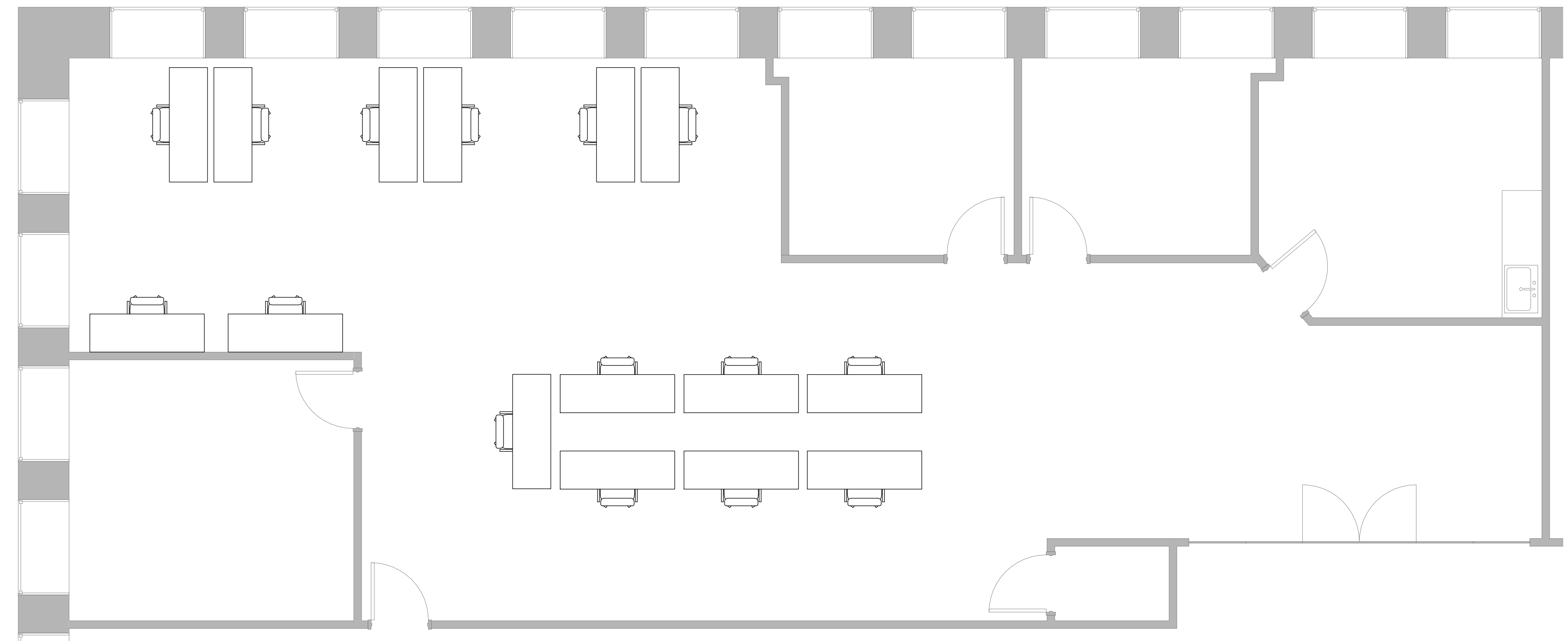
Drawing Title

Issue Date:	9-2-2021
Project No:	Scale: As Indicated
Project Manager:	Production Leader:
Project Architect:	Peer Reviewer:

Drawing Number
A.105

LEGEND

	NOT IN SCOPE		PROPOSED ITEMS(HEAVY LINE WEIGHT)
	EXISTING ITEMS		EXISTING DOOR AND FRAME TO REMAIN
	NEW DOOR AND FRAME		DEMO ITEMS



1 SUITE 803
1/4" = 1'-0"

DISCLAIMER: ALL BUILDOUT IS BASED ON BRADY SULLIVAN PROPERTIES "CONSTRUCTION STANDARDS". BRADY SULLIVAN PROPERTIES RESERVES THE RIGHT TO ISSUE A CHANGE ORDER FOR ADDITIONAL WORK NOT INCLUDED IN DRAWINGS.

9/2/2021 8:55:38 AM