

# Office Condo For Sale



GO Commercial

750 Lafayette Rd., Ste. 201 Portsmouth, NH 03801 | 603-610-8500

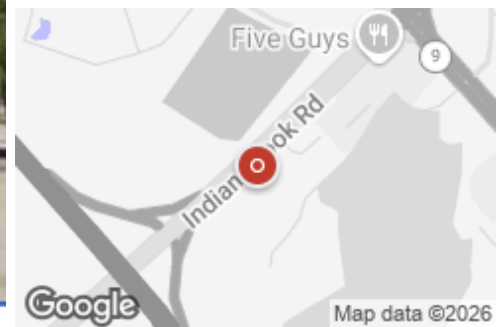
## Medical Office Condo for Sale (Condos)

Office: Medical/Dental Condo For Sale

51 Webb Place, Dover, NH, 03820

Prepared on February 03, 2026

1 of 1 Listings



### Listing Details | Office Condo For Sale

Suite	<b>320</b>
Condo	<b>Yes</b>
Total Available Space	<b>2,817 SF</b>
Asking Price	<b>\$895,000</b>
Listing Price Per SF	-
Cap Rate (Actual)	-
Investment	<b>No</b>
Signage	<b>On Building</b>

Show Instructions	<b>Call broker</b>
Vacant	<b>No</b>
Available Date	<b>Now</b>
Days On Market	<b>109 days</b>
Date Listed	<b>10/17/2025</b>
Last Modified	<b>1/08/2026</b>
Listing ID	<b>43566035</b>
Parking Spaces	-

### Description

Class A Medical Professional Office Condo For Sale. This is a great opportunity to purchase a quality office which was built out new in 2022. Perfect for a medical user or a professional office. Located right at the Weeks Crossing in Dover, just minutes from Wentworth Douglass Hospital, and right in the heart of the high traffic area at Exit 9 of the Spaulding Turnpike. Location, Location, Location. as they say! This is a great location that gives many options for proximity to all of the Office and Medical users in both Dover, Somersworth and those medical miles, as well as being just 12 minutes or so to Portsmouth. It is very easy to get to for a lot of the proximate population.

The unit offers 4 individual treatment rooms, Sauna Room, Office, Break/workspace, Laundry/locker room, large reception/waiting, and a large physical therapy gym. This is easily adaptable to other office users.

The Unit is also available For Lease to a suitable user.

### Property Features

#### Location Details

Address	<b>51 Webb Place, Dover, NH, 03820</b>	Parcels	<b>D0002-000000</b>
Zoning	<b>B-3</b>	Name	<b>51 Webb Pl</b>
County	<b>Stafford</b>	Nearest MSA	<b>Boston-Cambridge-Newton</b>



© Copyright Catylist. All Rights Reserved. The information presented herein is provided as is, without warranty of any kind. Neither the administrators of this site nor Catylist assume any liability for errors or omissions.

## Building Details

Sub Type	<b>Medical/Dental</b>
Building Status	<b>Existing</b>
Building Size	<b>2,817 SF</b>
Land Size	<b>8.55 Acres / 372,508 SF</b>
Number of Buildings	<b>1</b>
Number of Floors	<b>3</b>
Year Built	<b>2022</b>
Primary Constr. Type	<b>Masonry</b>
Occupancy Type	<b>Single Tenant</b>
Building Class	<b>A</b>
Parking Spaces	-
Parking Ratio	-

Elevators	<b>Present</b>
Condominiumized	<b>Yes</b>
Rentable Space	<b>2,817 SF</b>
Air Conditioned	<b>Yes</b>
Heated	<b>Yes</b>
Owner Occupied	<b>Yes</b>
Electricity	<b>Yes, Private, Unutil</b>
Water	<b>Yes</b>
Sanitary Sewer	<b>Yes</b>
Natural Gas	<b>Yes, Private, Unutil</b>
Rail Service	<b>No</b>

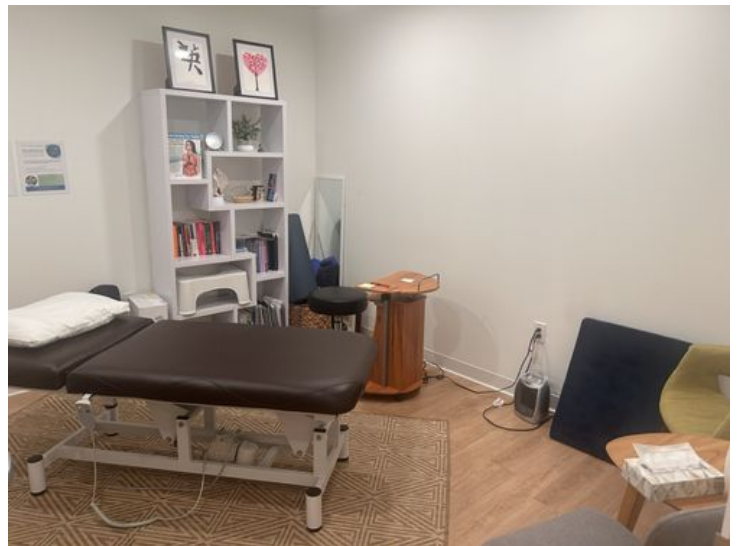
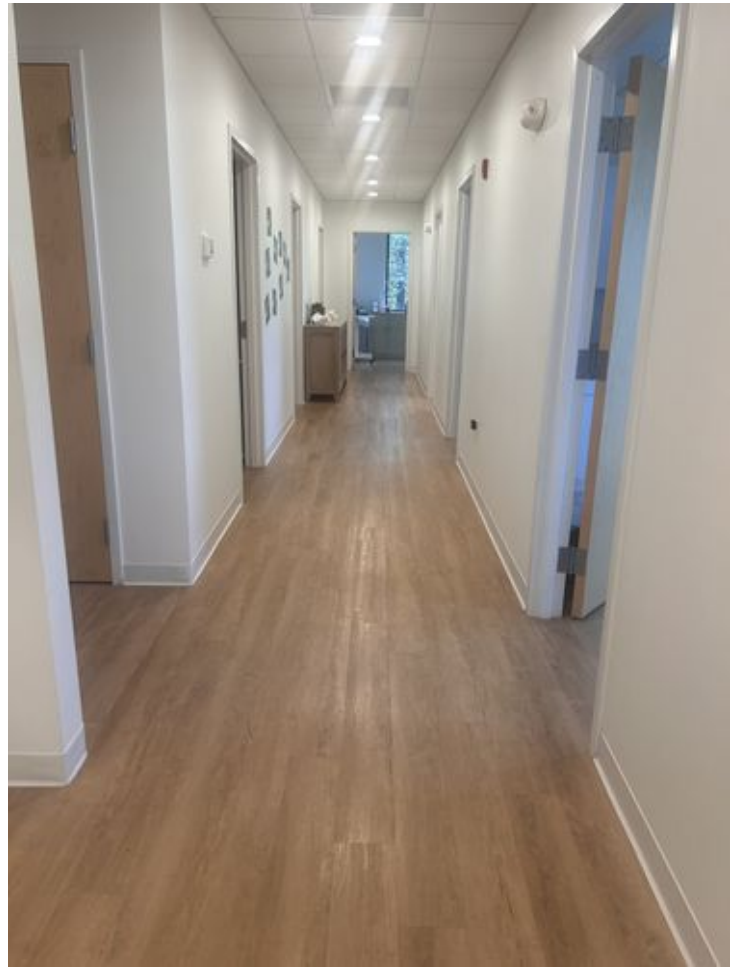
## Property Listings

3 Listings | 2,287 - 2,817 SF | Negotiable

Type	Condo	Space Use	Suite	Available Space	Rate	Available
For Sale	Yes	Office	320	2,817 SF	\$895,000	Now
For Lease	Yes	Office	320	2,817 SF	\$27.50 Annual/SF Net NNN	Now
For Sale	Yes	Office	-	2,287 SF	\$240,000	Now

## Additional Photos











## Contact



**Gerry O'Connell**  
603-610-8950  
gerry@oconnellre.com

  
GO Commercial

# 51 Webb Pl

Nearby Retail

