

For Lease: Waterfront Office Suites

2 Portland Fish Pier | Portland, ME



Property Highlights

- Up to 6,000± SF of office space available
- Located along Portland's waterfront with convenient access and immaculate views of the working waterfront.
- Parking is available for lease in Landlord controlled lot below market rates.
- Lease Rate: \$21.00-24.00/SF Modified Gross

PORTA & CO.

COMMERCIAL REAL ESTATE

30 Milk Street, Second Floor
Portland, ME 04101
207-747-1515
www.portacompany.com

Owner:	Portland Fish Pier Associates
Building Size:	45,030± SF
Year Built:	1984
A/C:	Central
Elevator:	Yes (1)
Parking:	Parking available in Landlord owned lot for \$115/month
HVAC:	Separately metered supplemental heating system in unit *Building maintained at a minimum of 60°F*
Internet:	Tenants own responsibility



Available Spaces:

Suite 301: 2,501± SF - \$24/SF MG

Suite 310: 3,499± SF - \$21/SF MG

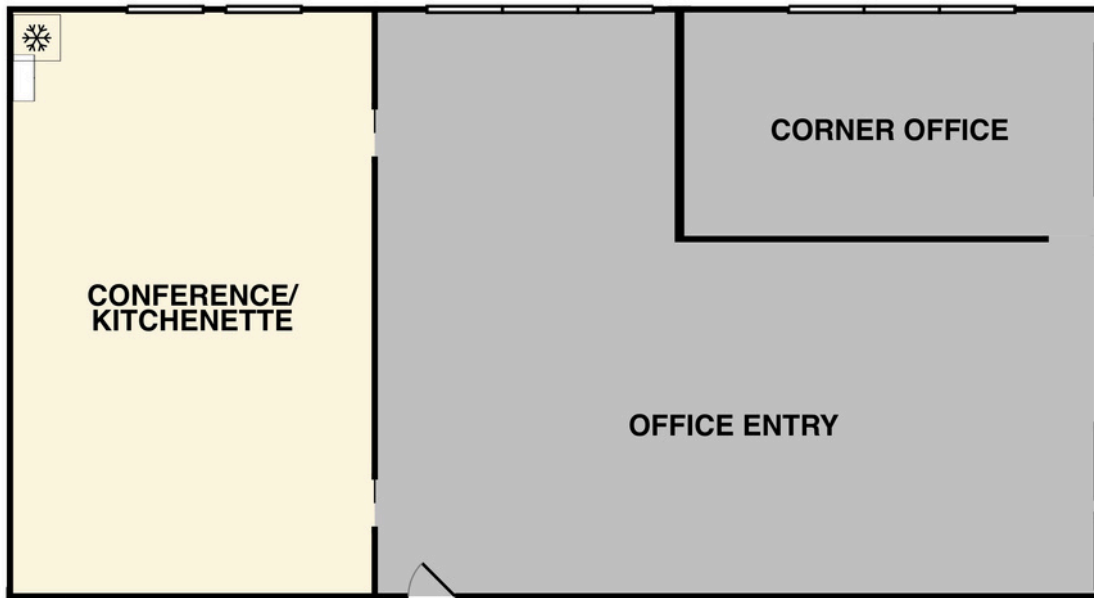
*While not contiguous these are directly across the hall and can easily be occupied by one tenant



Suite 301:
Lease Rate:

2,501± SF
\$24/SF MG

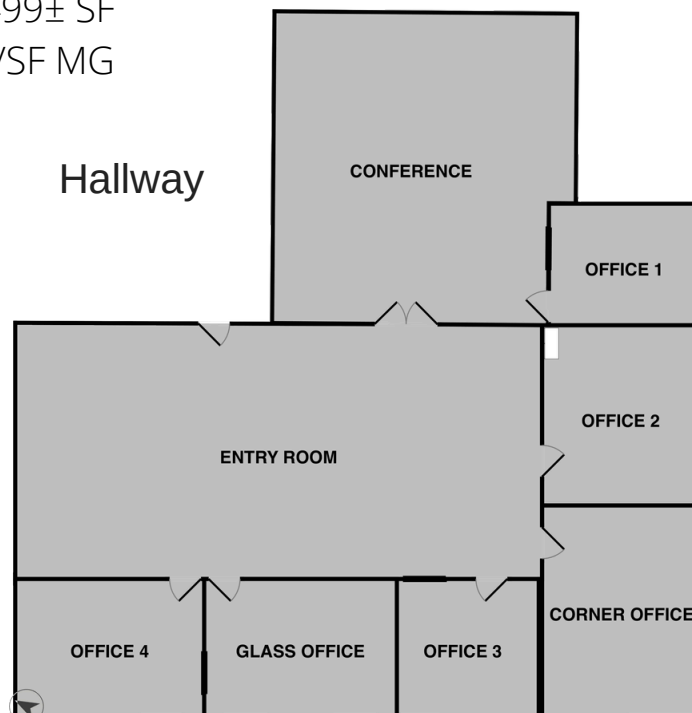
Water Views



Hallway

Suite 310
Lease Rate:

3,499± SF
\$21/SF MG



Water Views

Water Views

**PORTA
& CO.**

Property Aerial

2 Portland Fish Pier | Portland, ME



CONTACT



Anthony Struzziero

Broker
c: 207-329-2335
o: 207-747-1515
astruzziero@portacompany.com



Emmett Peoples

Associate Broker
c: 207-400-4939
o: 207-747-1515
epeoples@portacompany.com

This information has been obtained from sources believed reliable and is intended for informational use only. The information contained herein has not been verified for accuracy or completeness. It is recommended that prospective tenants and buyers conduct their own inspection of the property and verify all information. Any reliance on this information is solely at your own risk. Photos herein are the property of their respective owners. Use of these images without the express written consent of the owner is prohibited.

PORTA & CO.

COMMERCIAL REAL ESTATE

30 Milk Street, Second Floor
Portland, ME 04101
207-747-1515
www.portacompany.com