



FOR LEASE

400 ROUNDWOOD DRIVE
SCARBOROUGH, ME 04074



PROPERTY HIGHLIGHTS

- Parking on-site and in common spaces with the ability to add more. See broker for details.
- 2,790± SF space available, including private office, kitchenette, bathroom with shower, 810± SF of warehouse, and a loading dock
- \$21.00/SF MG



FOR LEASE

400 ROUNDWOOD DRIVE, SCARBOROUGH, ME 04074

PROPERTY HIGHLIGHTS

OWNER	Pierce Furniture
ASSESSOR'S REF	Map R38, Lot 1103
SPACE SIZE	2,790± SF
LAND AREA	1.12± Acres
ZONING	B-2
HEATING	Two (2) rooftop natural gas heating and A/C units
POWER	3-Phase, 400 Amp
CEILING HEIGHT	10'6"
SPRINKLERS	Yes, wet system
LOADING DOCK	One (1), 6'x8' loading dock door
PARKING	On-site and in common
LEASE RATE	\$21.00/SF MG



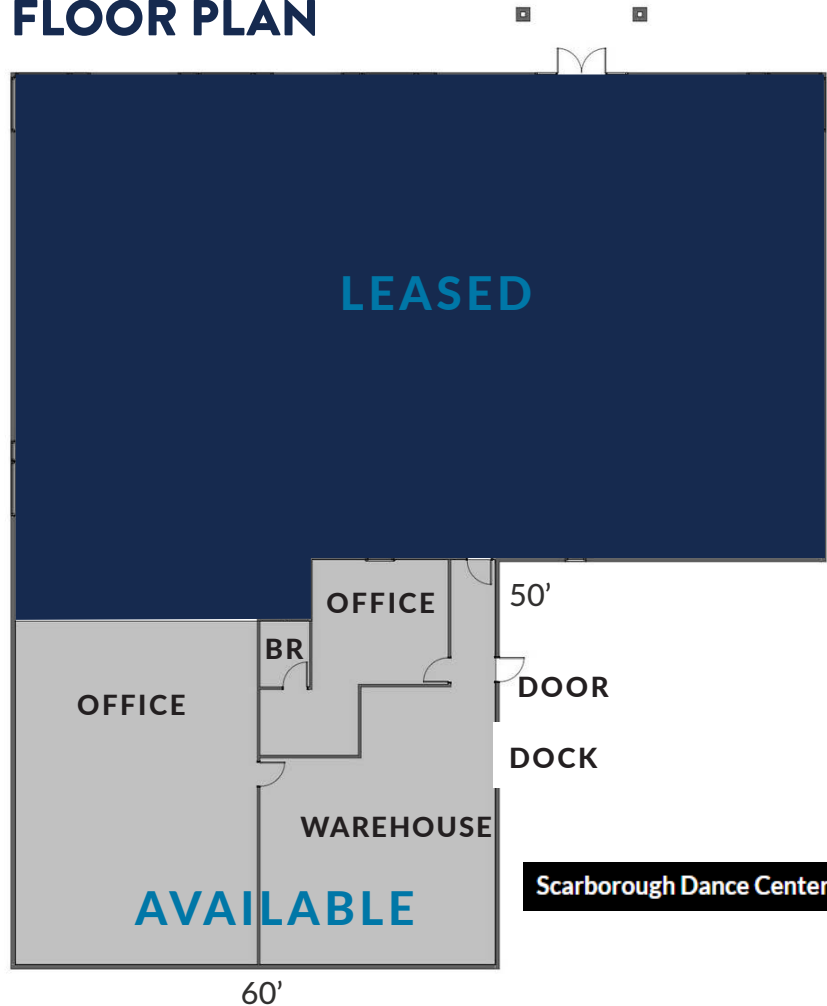
PERMITTED USES

- Retail Businesses (including warehousing & distribution)
- Business & Personal Services
- Professional Offices
- Financial Insurance & Real Estate Offices
- Non-Municipal Government Offices
- Fully Enclosed Places of Assembly, Amusement & Culture
- Clubs & Lodging
- Passenger Transportation Facilities
- Family & Group Day Care Facilities
- High Technology Facilities
- Hotels/Motels
- Restaurants
- Municipal Buildings
- Places of Worship & Funeral Homes
- Health Clubs
- Non-Residential Institutional Uses
- Libraries/Museums
- Elementary, Secondary & Nursery Schools
- Telecommunication Facilities
- Small Batch Processing Facilities

SPECIAL EXCEPTIONS:

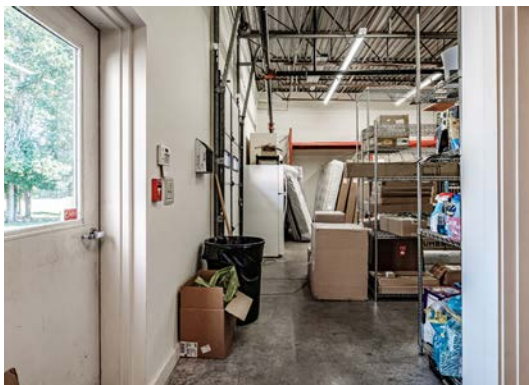
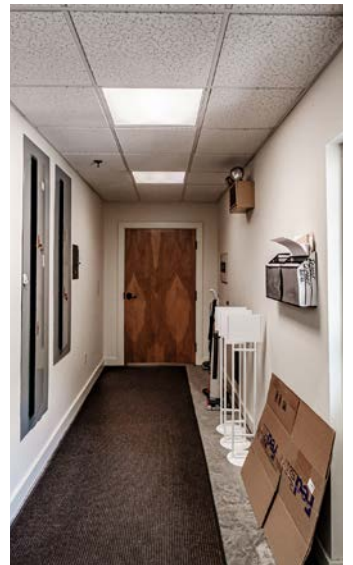
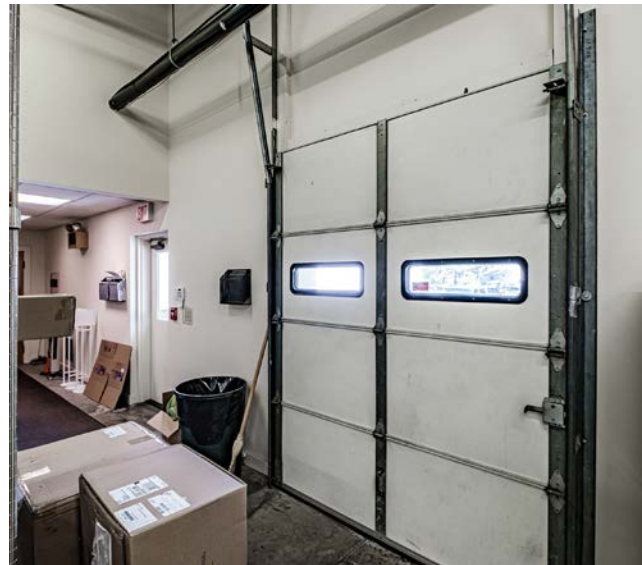
- Public Utility Buildings
- Outdoor Storage (excluding fuel stored in bulk)
- Outdoor Sales (w/merchandise displayed 1,000 ft. from public way)
- Adjunct Uses, Places of Worship

FLOOR PLAN



FOR LEASE

400 ROUNDWOOD DRIVE, SCARBOROUGH, ME 04074



FOR LEASE

400 ROUNDWOOD DRIVE, SCARBOROUGH, ME 04074



JOHN FINEGAN

Associate Broker

207.553.1718 D

207.829.8305 C

jfinegan@boulos.com

©2026 The Boulos Company, Inc. All rights reserved. This information has been obtained from sources believed reliable, but has not been verified for accuracy or completeness. You should conduct a careful, independent investigation of the property and verify all information. Any reliance on this information is solely at your own risk. The Boulos Company and The Boulos Company logo are service marks of The Boulos Company, Inc. All other marks displayed on this document are the property of their respective owners. Photos herein are the property of their respective owners. Use of these images without the express written consent of the owner is prohibited.