

269 PROCTOR HILL RD.  
HOLLIS, NEW HAMPSHIRE

FOR SALE  
± 15,175 SF

**WILLIAM  
& REEVES**  
COMMERCIAL REAL ESTATE



## MIXED USED INDUSTRIAL

**Total Building Size:**  
1st Floor: ±10,542 SF  
2nd Floor: ± 3,327 SF  
Mezzanine: +1,306 SF  
Total ±15,175 SF

**Property Type:**  
Mixed-use

**Year Built:**  
1983

**Parking:**  
Ample Parking

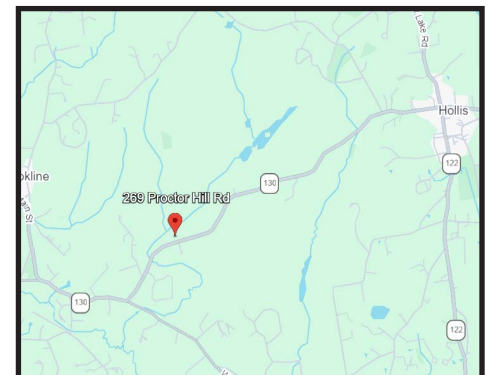
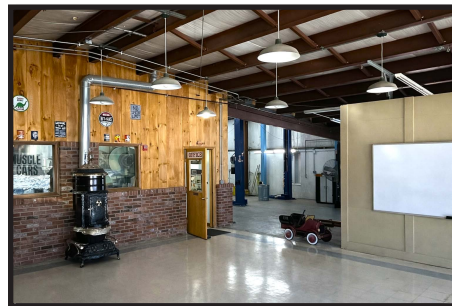
**Lot Size:**  
+1.45 acres

**Zoning:**  
Industrial

**Loading:**  
4 overhead doors

**Potential Uses:**

- Contractor
- Auto Repair
- Landscaping
- Wood shop
- Fabrication



**Highway Access:**  
≤ 7.5 mi to Exit 6  
≤ 7.6 mi to 101A

**DEANE NAVAROLI**  
CELL: 603.315.0808  
EMAIL: DEANE@WRCRE.COM

WRCRE.COM

OFFICE: 603.851.5841

