

FOR LEASE



DOWNTOWN OFFICE SPACE

5 MILK STREET
PORTLAND, ME 04101

PROPERTY HIGHLIGHTS

- 4,473± SF of modern office space with exceptional natural light in historic brick and beam office building
- Private, street-level entrance
- Excellent Old Port location near endless amenities and easy access to/from the highway
- Desirable layout with a mix of private offices, open area and storage space
- The building neighbors a parking garage and is surrounded by ample street parking
- Lease Rate: \$15.50/SF NNN



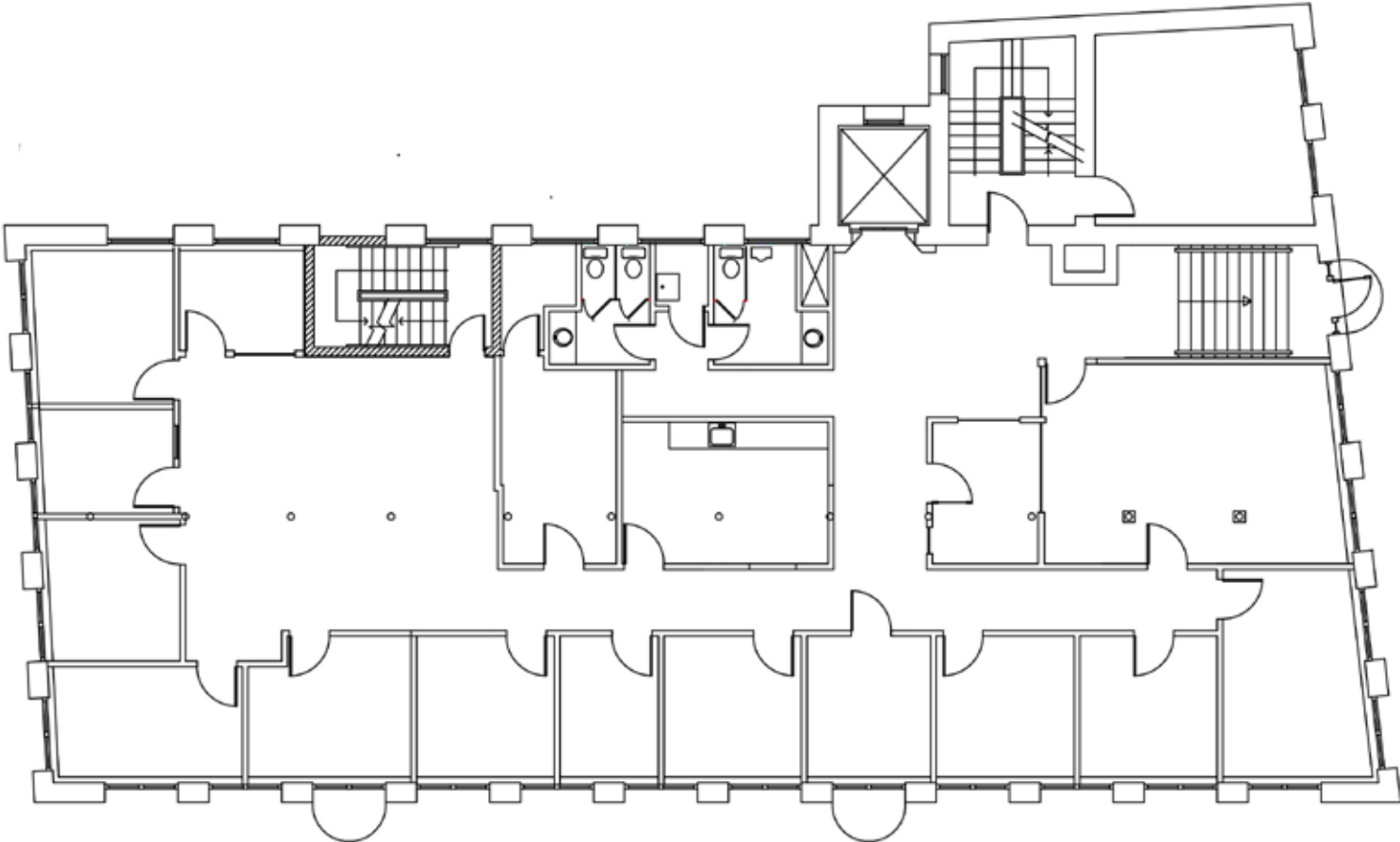
PROPERTY DETAILS

OWNER	Olympia Milk Street, LLC
BUILDING SIZE	30,633± SF
AVAILABLE SPACE	4,473± SF on the 1st floor - Available 6/1/2026
OFFICE LAYOUT	Desirable layout includes a large conference room, 14 private offices, work room, kitchen and open work space with ample natural light, updated brick and beam finishes and storage space
ZONING	B3 - Downtown Business District
UTILITIES	Municipal water and sewer
HVAC	Heat pump
ELECTRICITY	Separately metered
ELEVATOR	Yes, passenger
RESTROOMS	One (1)
SPRINKLERS	Yes
PARKING	Two (2) surface lot parking spaces for \$220/month each in addition it street parking and area garages
LEASE RATE	\$15.50/SF NNN
NNN EXPENSES (Est.)	\$9.78/SF

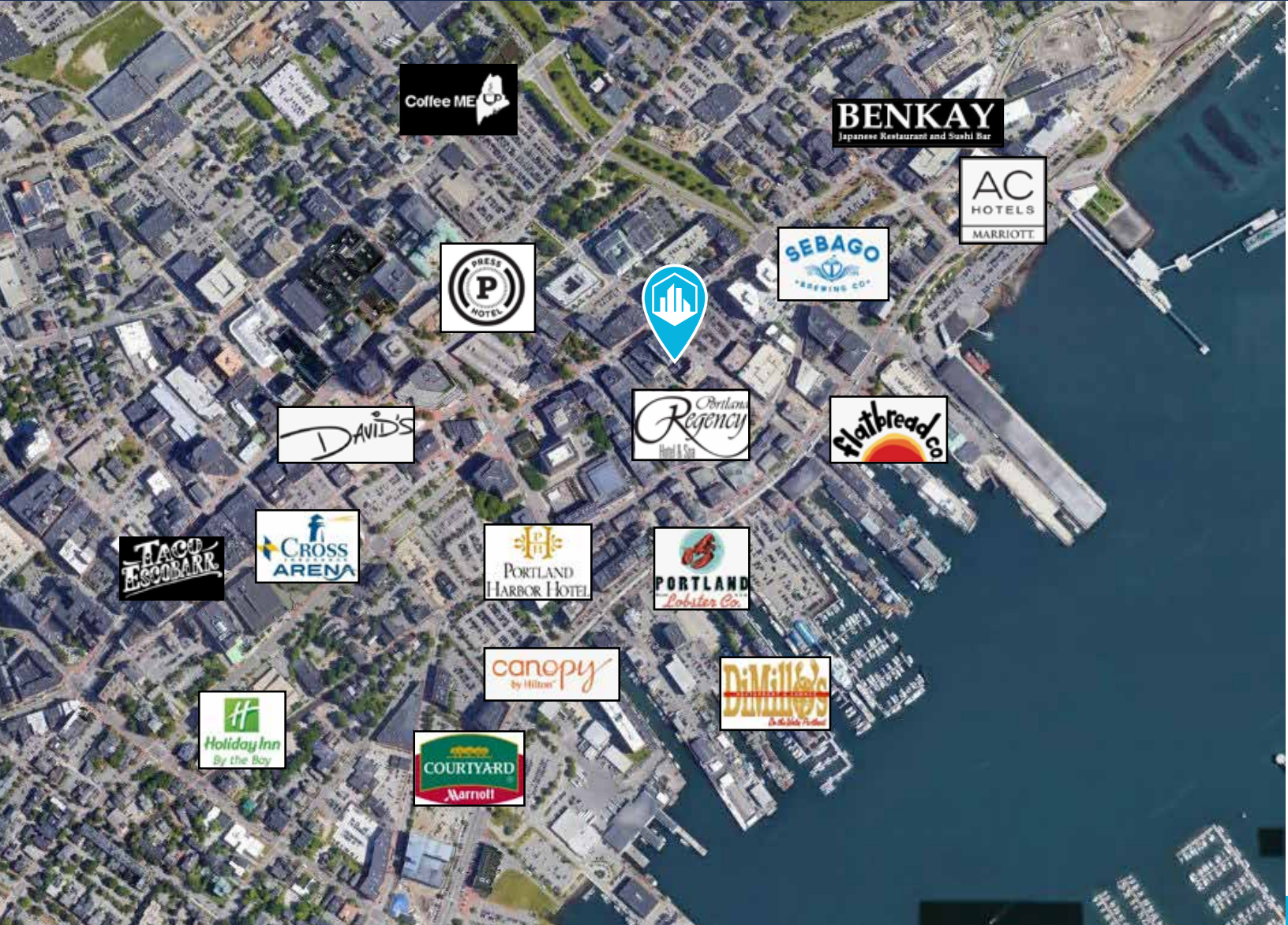


5 MILK STREET
PORTLAND, ME 04101

FLOOR PLAN



5 MILK STREET
PORTLAND, ME 04101



CONTACT US



SAMANTHA MARINKO
Broker

207.553.1723 D
908.433.5049 C
smarinko@boulos.com



EMMETT FRUEH
Associate

207.553.1739 D
207.749.3127 C
efrueh@boulos.com

©2026 The Boulos Company, Inc. All rights reserved. This information has been obtained from sources believed reliable, but has not been verified for accuracy or completeness. You should conduct a careful, independent investigation of the property and verify all information. Any reliance on this information is solely at your own risk. The Boulos Company and The Boulos Company logo are service marks of The Boulos Company, Inc. All other marks displayed on this document are the property of their respective owners. Photos herein are the property of their respective owners. Use of these images without the express written consent of the owner is prohibited.