

# The Maine Wharf Office Space

68 Commercial Street | Portland, Maine



## Property Highlights

- 2,500-6,677± SF Waterfront office space available
- Situated on the Maine Wharf and along Commercial Street
- New energy efficient space
- Build out available - see Broker
- Within walking distance to the heart of Portland
- Lease Rate: \$30.00/SF NNN

**PORTA & CO.**

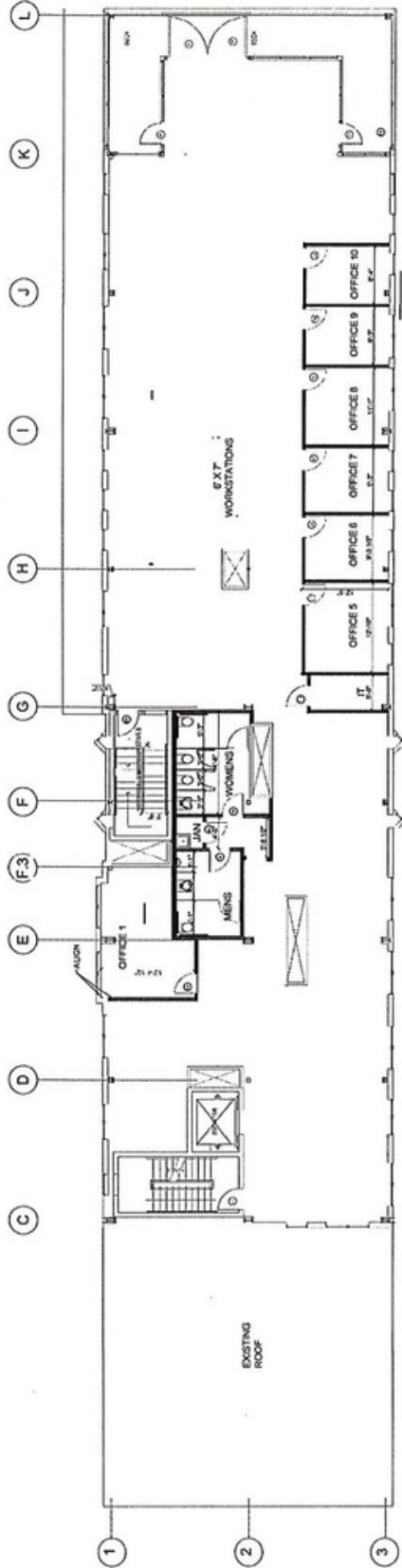
COMMERCIAL REAL ESTATE

30 Milk Street, Second Floor  
Portland, ME 04101  
207-747-1515  
[www.portacompany.com](http://www.portacompany.com)

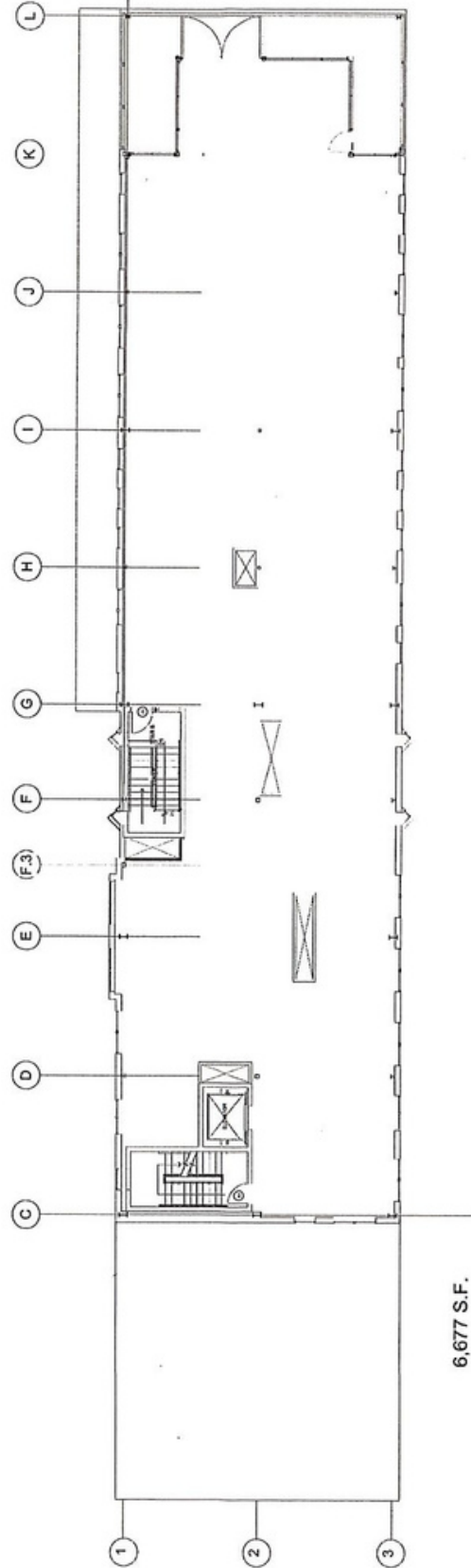
<b>Owner</b>	<b>Maine Wharf, LLC</b>
<b>Stories</b>	<b>3</b>
<b>Building Size</b>	<b>22,000± SF</b>
<b>Parking</b>	<b>On-site: See Broker</b>
<b>Available Space</b>	<b>2,500-6,677± SF</b>
<b>Year Built</b>	<b>2015</b>
<b>HVAC</b>	<b>Rooftop Forced Hot Air - Gas Fired</b>
<b>Utilities</b>	<b>Separately metered</b>
<b>Construction</b>	<b>Steel</b>
<b>Zoning</b>	<b>WC2</b>
<b>NNN</b>	<b>\$6.00 / SF</b>
<b>Lease Rate</b>	<b>\$30.00 / SF NNN</b>




**\*Potential Build Out**



**\*Current Layout**




  
 THIRD FLOOR PLAN  
 SCALE: 1/8"=1'-0"  


6,677 S.F.

PORTA  
& CO.

Aerial

68 Commercial Street, Portland, ME 04101



## CONTACT



**Peter Gwilym**

Broker  
c: 207.272.4262  
o: 207.747.1515  
pgwilym@portacompany.com



**Joseph Porta, SIOR**

Broker  
c: 207.712.6390  
o: 207.747.1515  
jporta@portacompany.com

This information has been obtained from sources believed reliable and is intended for informational use only. The information contained herein has not been verified for accuracy or completeness. It is recommended that prospective tenants and buyers conduct their own inspection of the property and verify all information. Any reliance on this information is solely at your own risk. Photos herein are the property of their respective owners. Use of these images without the express written consent of the owner is prohibited.

**PORTA & CO.**

COMMERCIAL REAL ESTATE

30 Milk Street, Second Floor  
Portland, ME 04101  
207-747-1515  
www.portacompany.com