

# PRIME OFFICE FOR LEASE SUPERIOR LOCATION

**43 N. Main St. Concord, NH**

**8,525 SQ. FT.**

**\$13.00 Per SQ. FT. NNN**

**\$11.60 PSF Common Area Expenses**

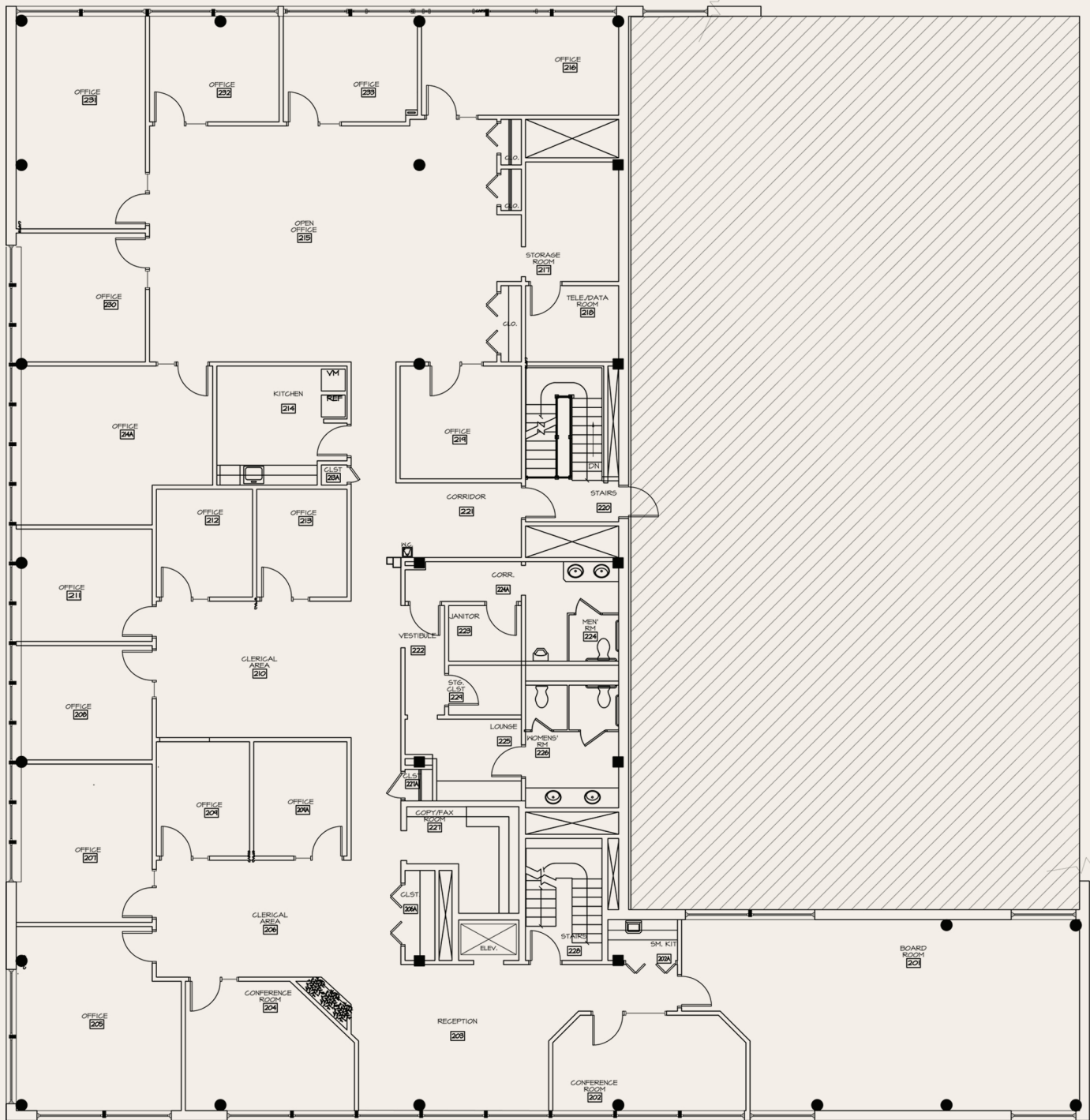


- Central downtown Concord location.
- Full floor with direct elevator entry to suite
- High-quality tenant improvements
- Board Room & 2 Conference Rooms
- 10 window offices & 5 internal offices
- 10 cubicles, kitchen, copy/supply, IT, etc.
- Parking available in adjacent garage

This information was secured from sources deemed reliable, but we make no representation or warranties, expressed or implied, as to the accuracy of the information. Representatives of INEX Properties or its related companies may be construed to have an equity interest in this property.



# 43 N. Main Street Concord, New Hampshire



SECOND FLOOR