

# FOR LEASE | FREEPORT RETAIL

42 MAIN STREET, FREEPORT, MAINE 04032



## PROPERTY OVERVIEW

### RETAIL FOR LEASE

- Prime retail space for lease located in Downtown Freeport, ME for \$20.00 PSF NNN.
- Rare opportunity to be in one of the most sought after retail locations in the state with close proximity to public parking and high foot traffic.
- Great location on Main Street across from L.L.Bean with traffic counts of 11,700± cars/day



**CORE**  
CoreFirms.com  
16 Casco Street  
Portland, ME 04101

**Contact Frank Carr**  
(207) 744-3084 ext 303  
Frank@CoreFirms.com

# FOR LEASE | FREEPORT RETAIL

42 MAIN STREET, FREEPORT, MAINE 04032



## PROPERTY DETAILS

**OWNER** Shulport LLC  
**DEED** Book 25645 / Page 0064  
**ASSESSOR** Map 11 / Lot 121

**LEASE TYPE** NNN  
**LEASE RATE** \$20.00 PSF  
**Unit#01**

**SQ. FOOTAGE** 20,325 ± SF  
**Unit#01** 3,878 ± SF

**YEAR BUILT** 1982

**CONSTRUCTION** Concrete & Wood Frame  
**ROOF** Asphalt  
**SIDING** Clapboard  
**FLOORING** Carpet

**CEILING HEIGHT** 10'-12' ±

**ELEVATOR** Yes

**HVAC** Natural Gas / Oil

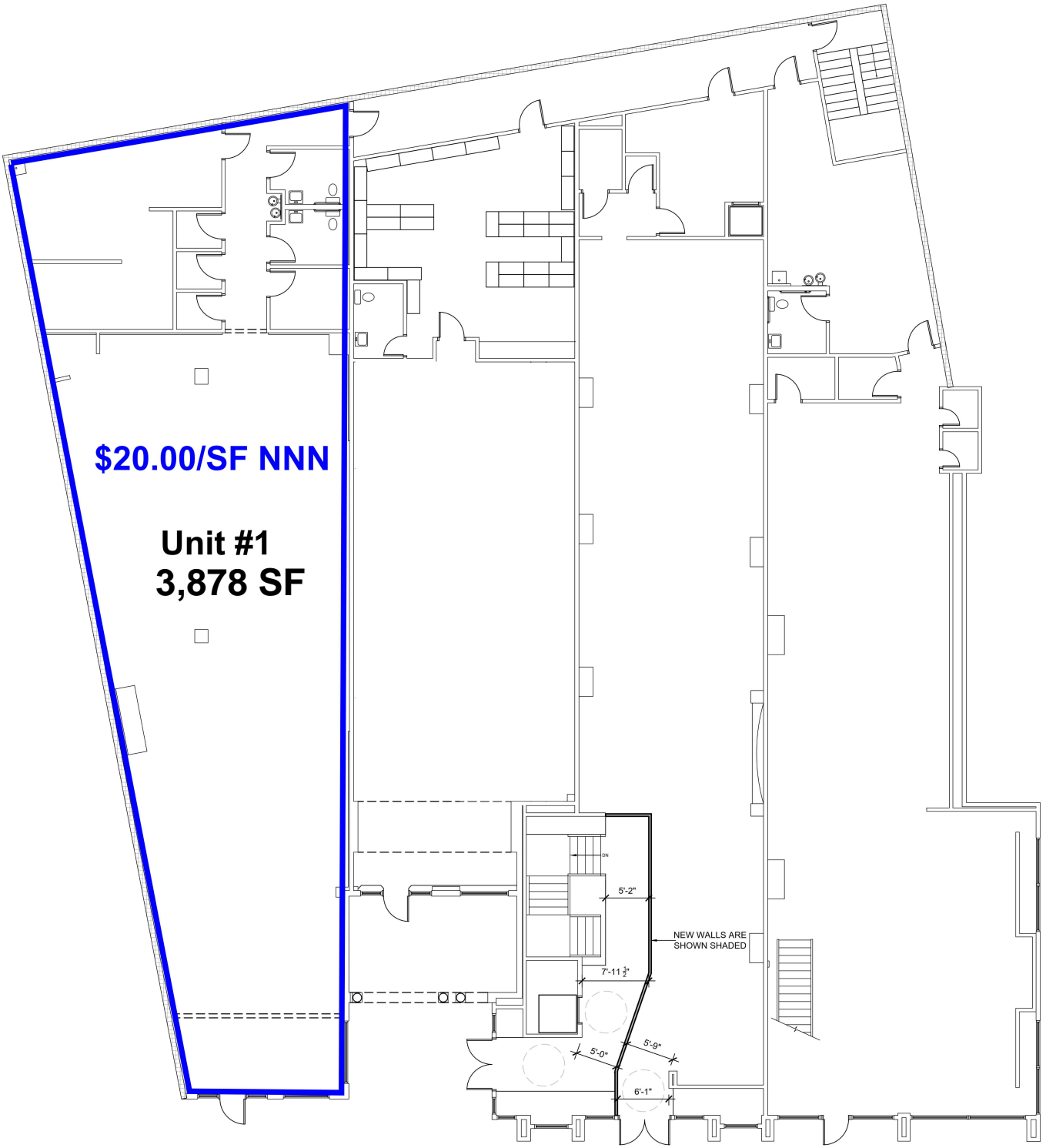
**UTILITIES** Municipal Water & Sewer

**PARKING** 20 ± Space Parking Garage



**CORE**  
CoreFirms.com  
16 Casco Street  
Portland, ME 04101

Contact Frank Carr  
(207) 744-3084 ext 303  
Frank@CoreFirms.com



**\$20.00/SF NNN**

**Unit #1  
3,878 SF**

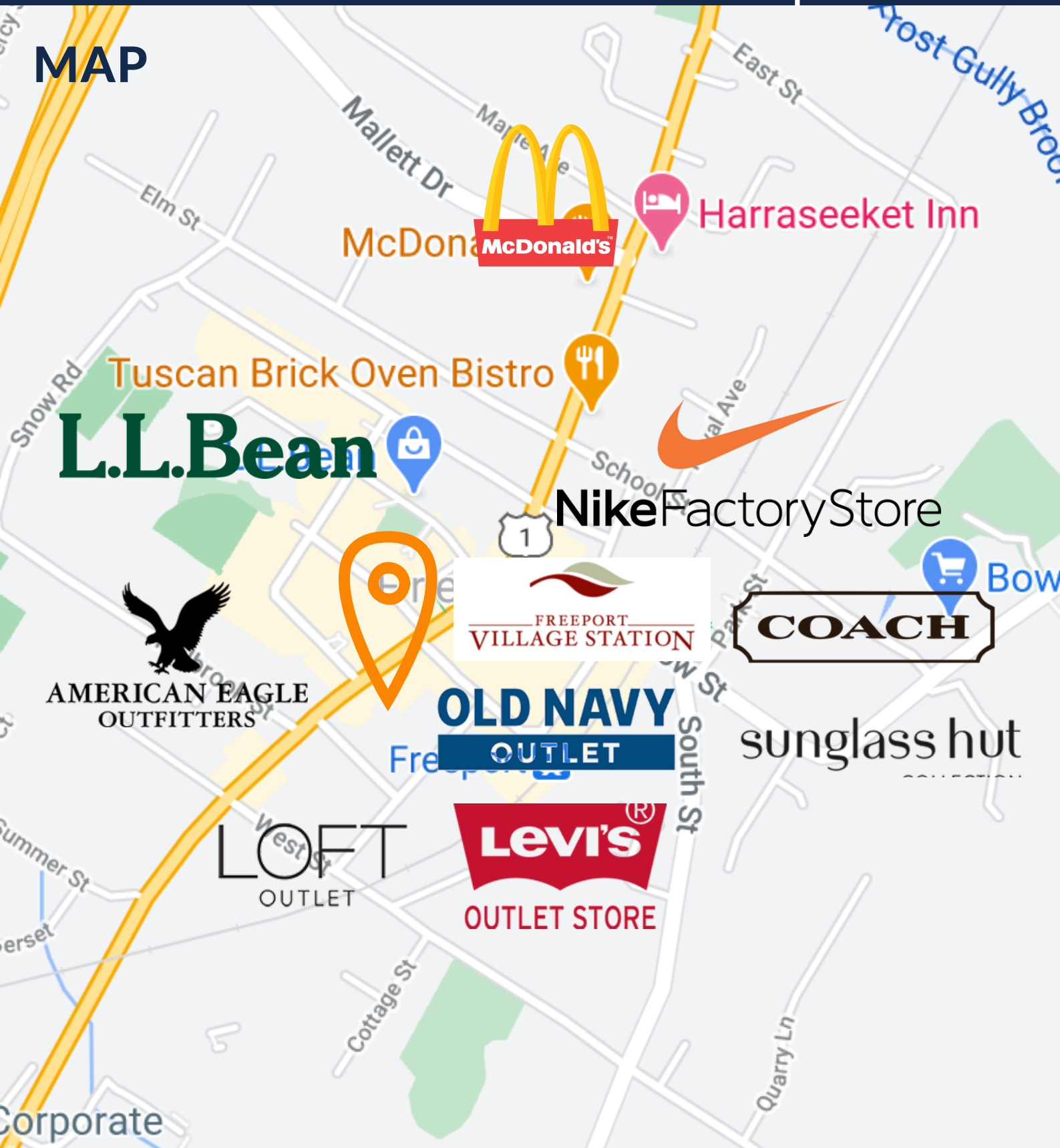
NEW WALLS ARE SHOWN SHADED

# FOR LEASE | FREEPORT RETAIL

42 MAIN STREET, FREEPORT, MAINE 04032



## MAP



**CORE**  
CoreFirms.com  
16 Casco Street  
Portland, ME 04101

Contact Frank Carr  
(207) 744-3084 ext 303  
Frank@CoreFirms.com

# FOR LEASE | FREEPORT RETAIL

42 MAIN STREET, FREEPORT, MAINE 04032



**CORE**  
CoreFirms.com  
16 Casco Street  
Portland, ME 04101

Contact Frank Carr  
(207) 744-3084 ext 303  
Frank@CoreFirms.com

# FOR LEASE | FREEPORT RETAIL

42 MAIN STREET, FREEPORT, MAINE 04032



## CONTACT



**FRANK CARR**

Director

(207) 744-3084 ext 303

Frank@CoreFirms.com

## CUMBERLAND COUNTY DEMOGRAPHICS

<b>POPULATION</b>	295k
<b>HIGHER EDUCATION</b>	47.6%
<b>MEDIAN AGE</b>	42.1
<b>MALE</b>	48.4%
<b>FEMALE</b>	51.6%
<b>MEDIAN HOUSEHOLD INCOME</b>	\$73.1k
<b>MEDIAN PROPERTY VALUE</b>	\$294.4k



**JOSH SOLEY**

President

(207) 744-3084 ext 30

Josh@CoreFirms.com