

# FOR SALE OR LEASE HISTORIC/MIXED USE PROPERTY

156 High Street • Portland, ME



## HISTORIC CHURCH CAMPUS FOR SALE or LEASE

- 31,632±SF on 0.455± acre lot
- Ideal for a variety of uses including residential conversion, event venue or offices
- Layout consists of sanctuary, chapel, offices and community rooms
- Can be sold with or without the sanctuary
- Prominent street frontage and highly visible location with traffic counts of 12,540± cars/day (MDOT 6/2025).



**Mark Malone**  
O 207.773.6000  
C 207.233.6000  
mark@malonecb.com



**Nick Malone**  
O 207.558.9466  
C 207.632.6010  
nick@malonecb.com

**SALE PRICE: \$2,450,000**  
**LEASE RATE: See Broker**



# PROPERTY SUMMARY

## 156 High Street • Portland, ME



### Site Info

<b>OWNER:</b>	Williston-Immanuel United Church
<b>DEED:</b>	Book 29974, Page 339
<b>ASSESSOR:</b>	Map 46, Block D, Lot 17 & 19 (156 High St) Map 46, Block D, Lot 20 & 37 (8 Deering St)
<b>LOT SIZE:</b>	0.455± AC (156 High St) 0.077± AC (8 Deering St)
<b>SIGNAGE:</b>	On building, at Pylon
<b>PARKING:</b>	12 deeded parking spaces on site
<b>ROAD FRONTAGE:</b>	105' on High Street
<b>TRAFFIC COUNT:</b>	12,540± cars/day (MDOT 2025)
<b>ZONING:</b>	B3 - Downtown Business
<b>PROPERTY TAXES:</b>	Currently exempt



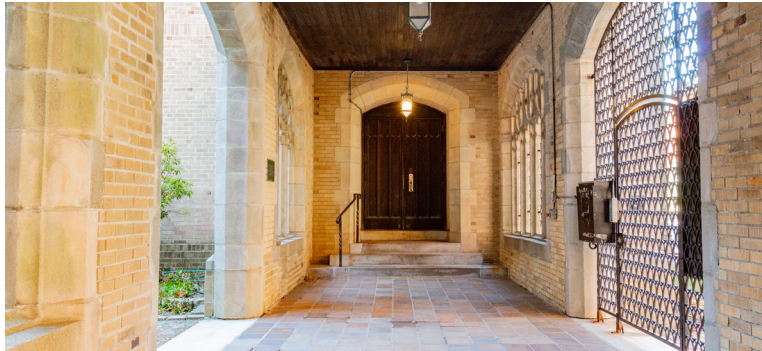
### Building Info

<b>BUILDING SIZE:</b>	31,632± SF
<b>YEAR BUILT:</b>	1928
<b>CONSTRUCTION:</b>	Brick and stone
<b>ROOF:</b>	Shale shingles
<b>SIDING:</b>	Brick and stone
<b>FOUNDATION:</b>	Full
<b>FLOORING:</b>	Wood, carpet, concrete & vinyl
<b>CEILING HEIGHT:</b>	8'± to cathedral
<b>ELECTRICITY:</b>	See broker
<b>HVAC:</b>	Gas, oil & electric
<b>UTILITIES:</b>	Municipal water/sewer
<b>KITCHEN:</b>	Yes
<b>RESTROOM:</b>	Four (4)±
<b>SPRINKLER:</b>	Yes



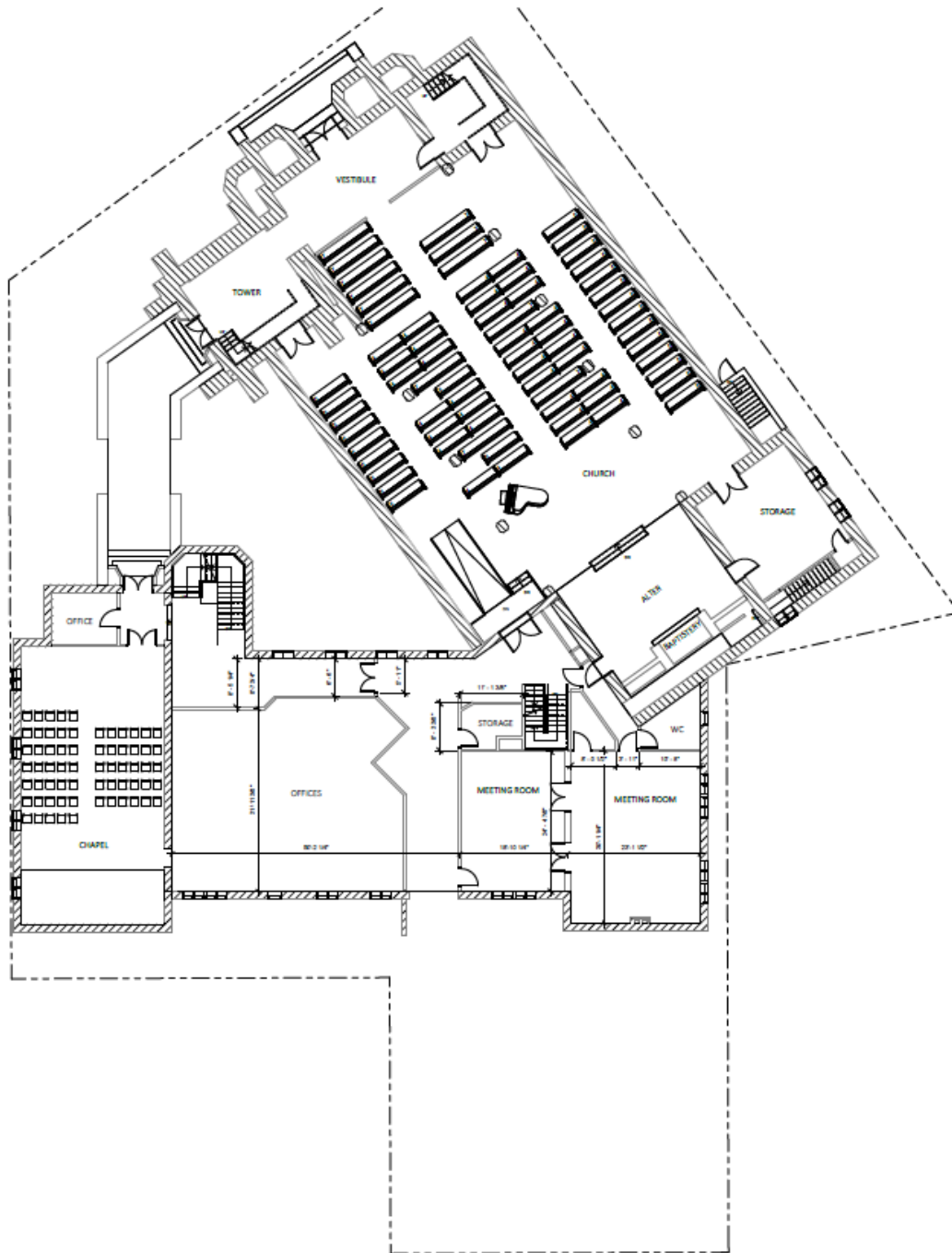
# PHOTOS

156 High Street • Portland, ME



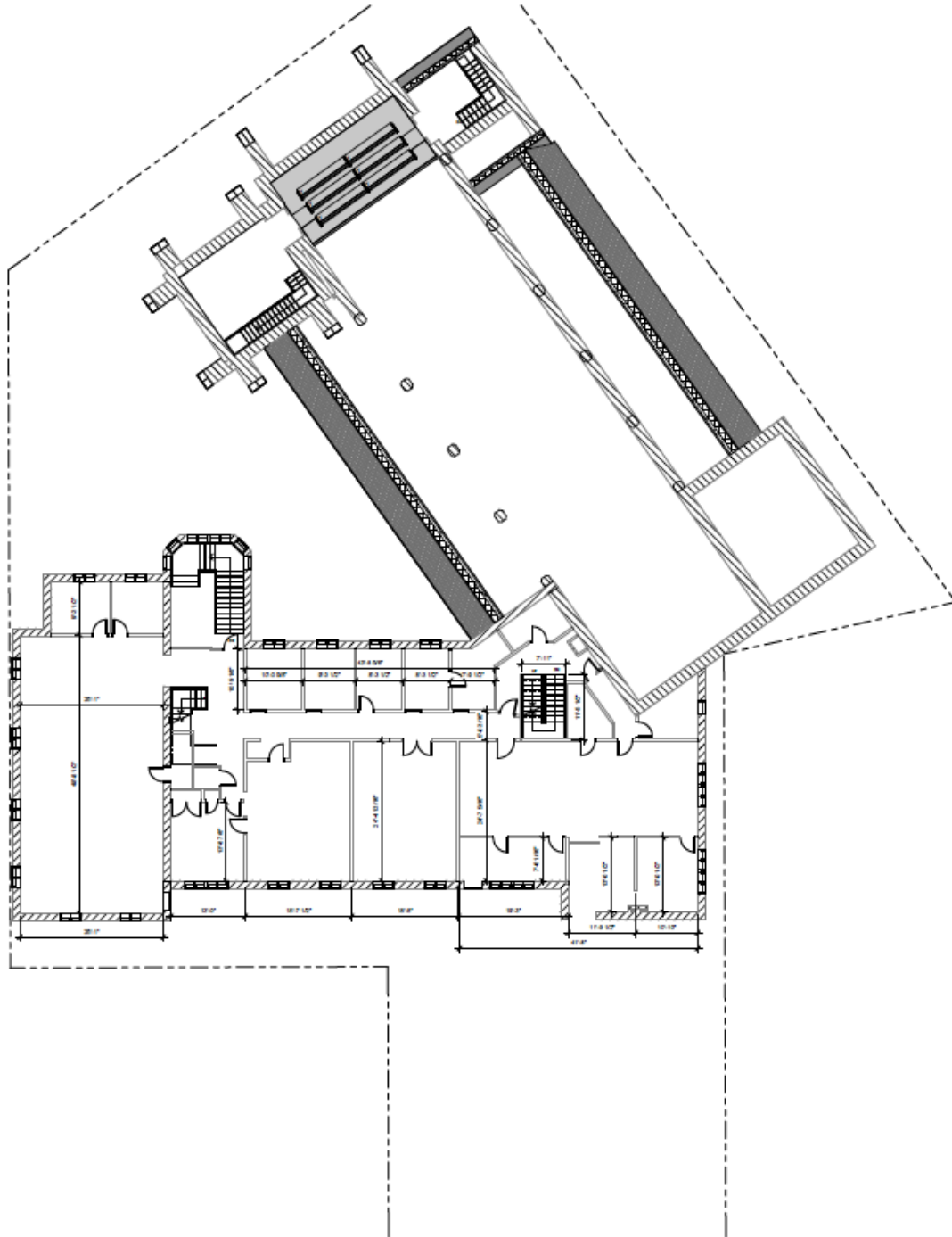
# FLOOR PLAN • MAIN LEVEL

156 High Street • Portland, ME



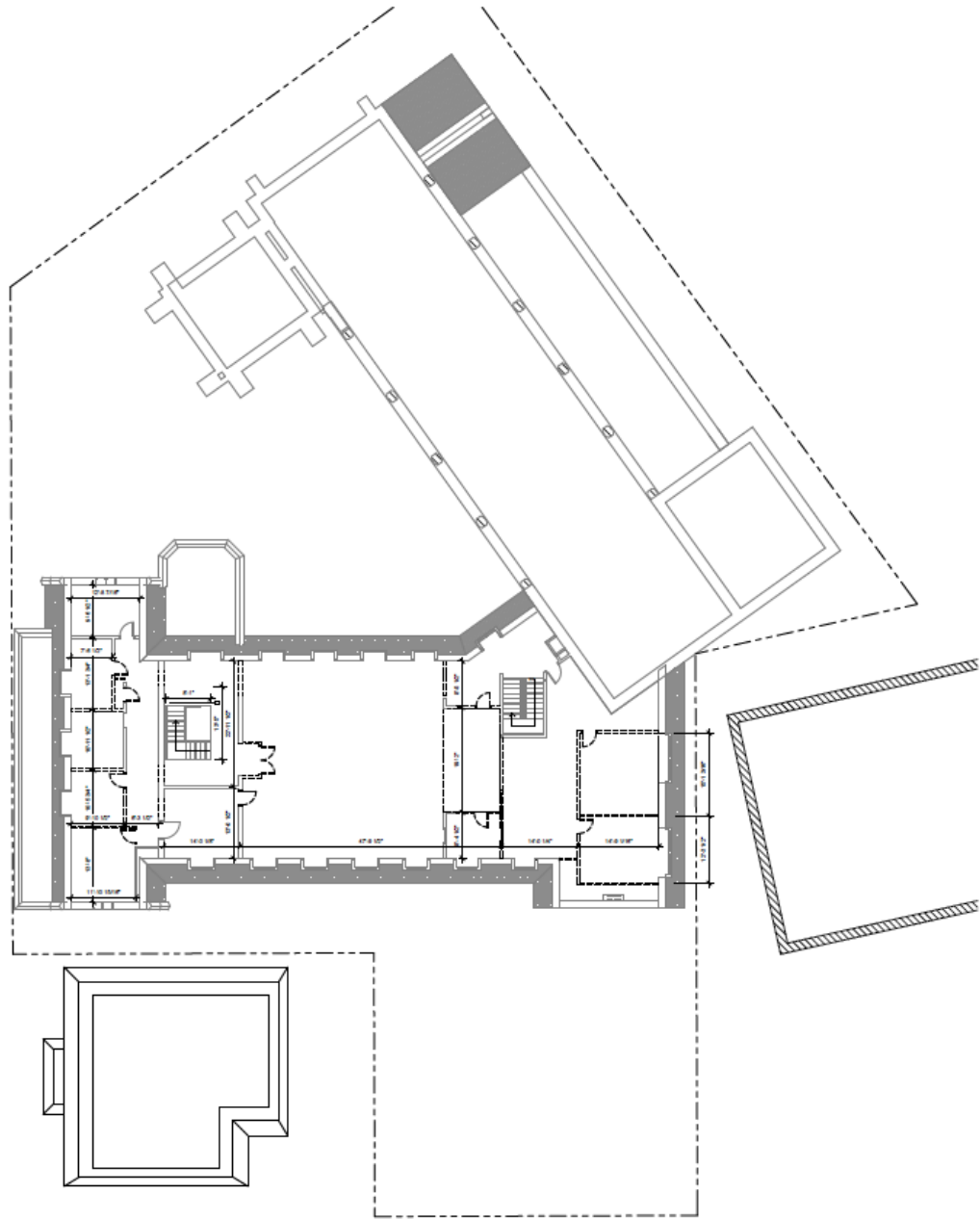
# FLOOR PLAN • SECOND LEVEL

156 High Street • Portland, ME



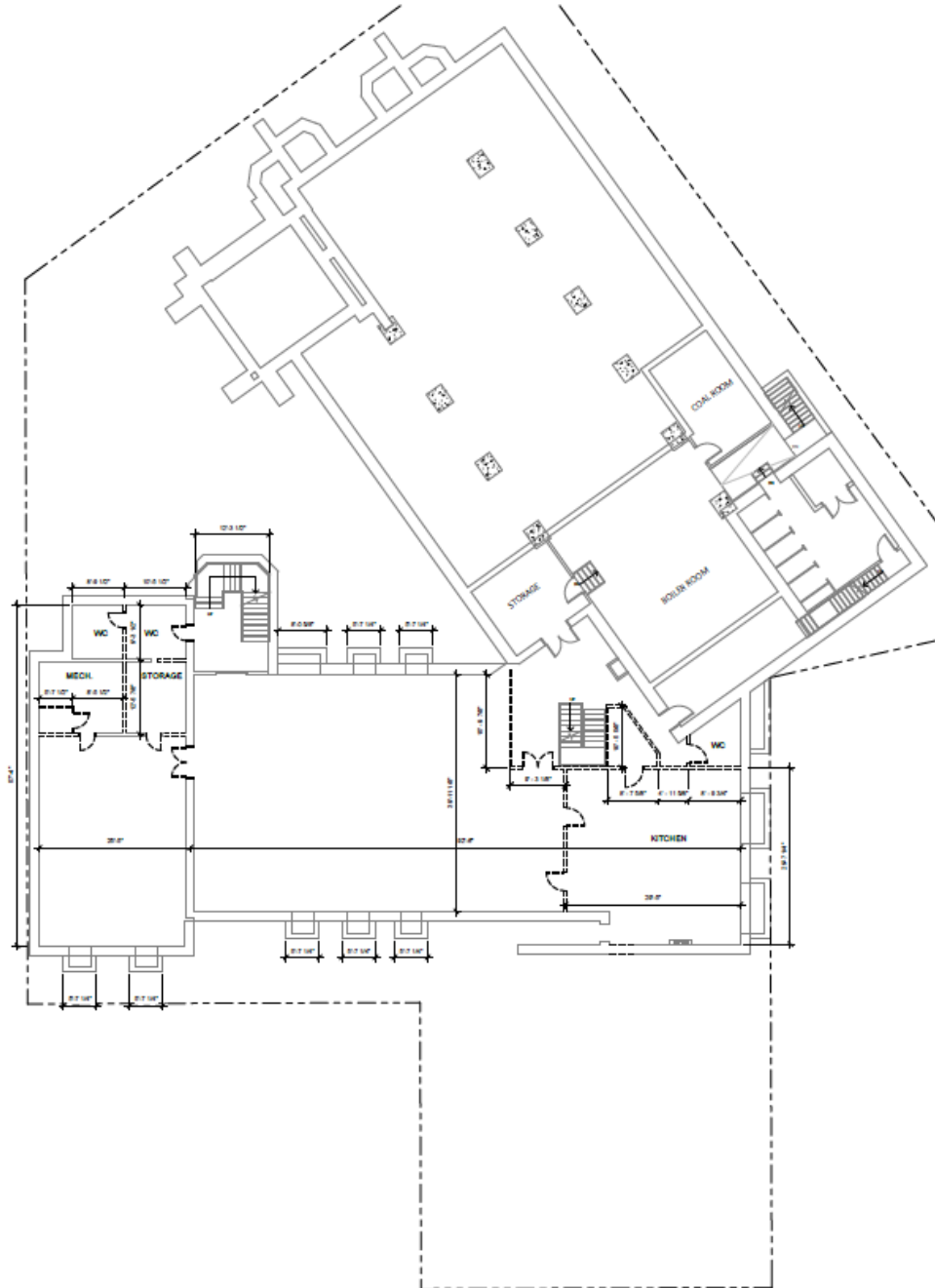
# FLOOR PLAN • THIRD LEVEL

156 High Street • Portland, ME



# FLOOR PLAN • BASEMENT

156 High Street • Portland, ME



# AERIAL PHOTOGRAPH

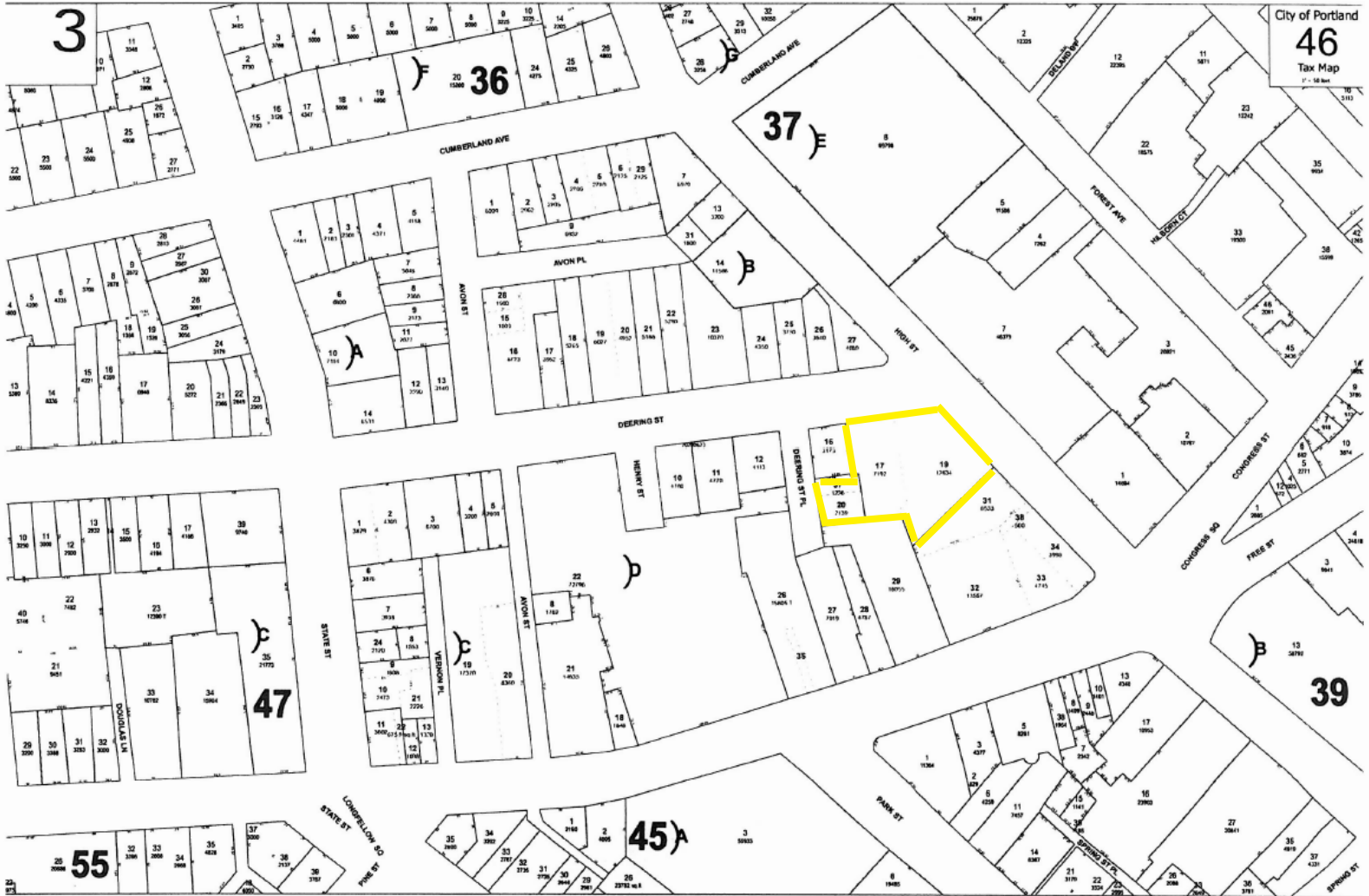
156 High Street • Portland, ME



5 MOULTON STREET | PORTLAND, ME 04101 | 207.772.2422 | MALONECB.COM

# TAX MAP

156 High Street • Portland, ME



# DEMOGRAPHICS

156 High Street • Portland, ME



118,405  
Population

2.1  
Average Household Size

40.9  
Median Age



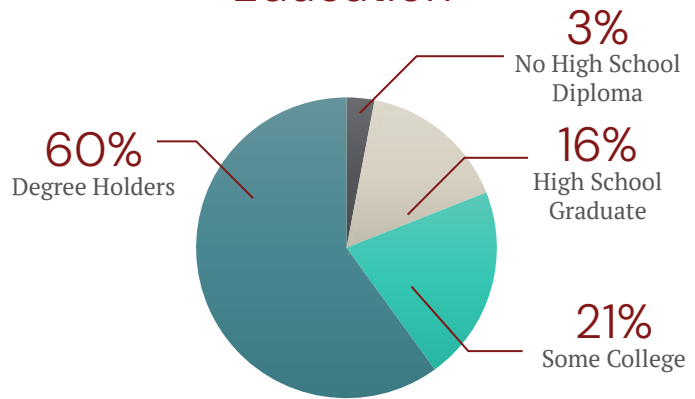
8,241  
Total Businesses

119,846  
Total Employees

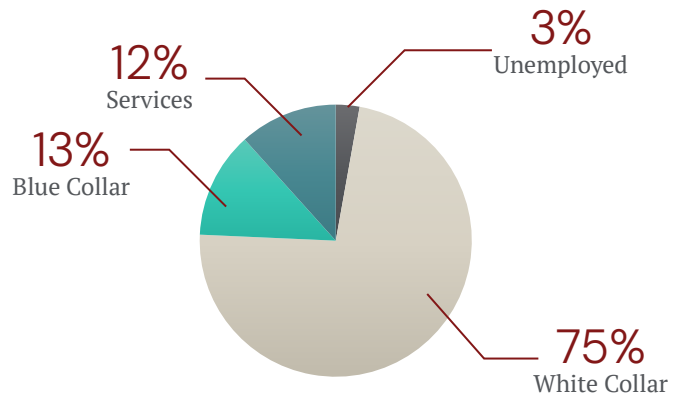


\$94,561  
Median Household  
Income

## Education



## Employment



# LOCATION MAP

156 High Street • Portland, ME



**NEARBY**

---

**STAY**

**WESTIN**  
HOTELS & RESORTS

**Holiday Inn**  
By the Bay

---

**DINE**

**EMPIRE**  
Chinese Kitchen

**TWO FAT CATS**  
BAKERY

**Y%F**

**LITTLE TAP**  
HOUSE

**GILL'S**  
Neighborhood Bar

---

**SHOP**

**WEEKEND VINTAGE**

**CVS**  
pharmacy

This document has been prepared by Malone Commercial Brokers for advertising and general information only. Malone Commercial Brokers makes no guarantees, representations or warranties of any kind, expressed or implied, regarding, but not limited to, warranties of content, accuracy, and reliability. Any interested party should undertake their own inquiries as to the accuracy of the information. Malone Commercial Brokers excludes unequivocally all informed or implied terms, conditions and warranties arising out of this document and excludes all liability for loss and damages there from. All data is subject to change of price, error, omissions, other conditions or withdrawal without notice. Malone Commercial Brokers is acting as the Seller's/Lessor's agent in the marketing of this property.

