

FOR LEASE

Office Space

Multiple Suites Available

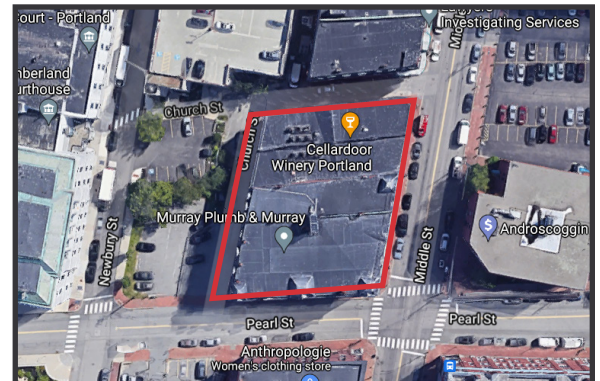


75 Pearl Street, Portland

Google

Property Highlights

- Shared color copier/printer and conference rooms
- Possible shared reception on second floor
- Convenient Downtown Portland location on the corner of Middle and Pearl Street



Property Description

We are pleased to offer for lease efficient and well located office suites in the Historic Woodman Building. Excellent downtown location within walking distance to City Hall, Cumberland County Court House, The Old Port, and Financial District.



Broker Contact

Frank O'Connor, CCIM, SIOR

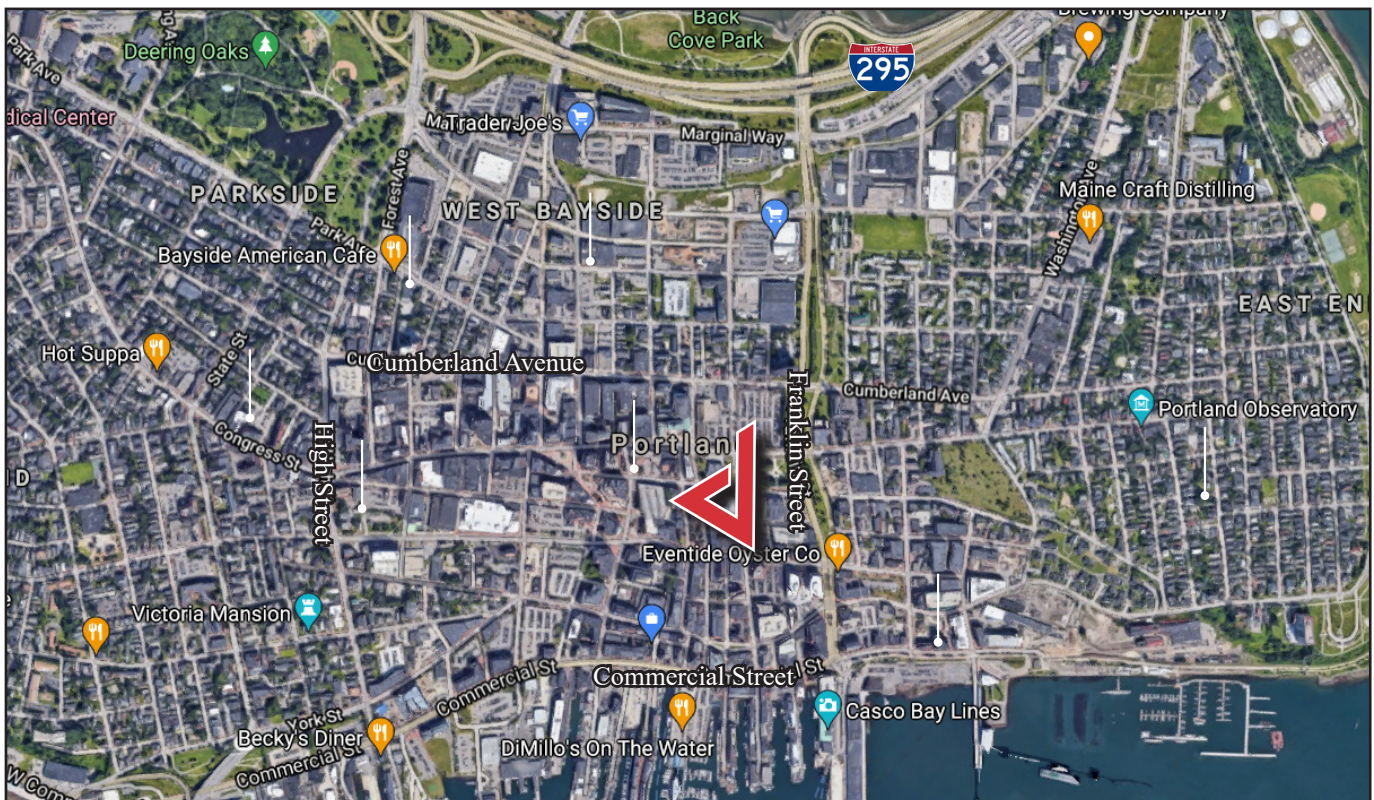
Sam LeGeyt, SIOR

foconnor@dunhamgroup.com

sam@dunhamgroup.com

Property Overview

Owner	Woodman Building Associates, LLC	
Space Available	Suite 205 - 486± SF, Second Floor	Suite 410 - 300± SF, Fourth Floor
	Suite 212 - 440± SF, Second Floor	Suite 420 - 990± SF, Fourth Floor
	Suite 217 - 452± SF, Second Floor	
Zoning	Downtown Business (B-3)	
Assessor's Reference	Map 28, Lots 502A, 502B, 503A, 503B, 504A, 504B	
Year Built	1900	
Utilities	Included in monthly rent. Internet is not included in monthly rent.	
Parking	Street	
Elevators	Two (2)	
Miscellaneous	<ul style="list-style-type: none"> - All tenants have access to color copier/printer and shared conference rooms - 2nd floor tenants have the option of connecting to phone system to utilize on-site receptionist 	



Suite 205

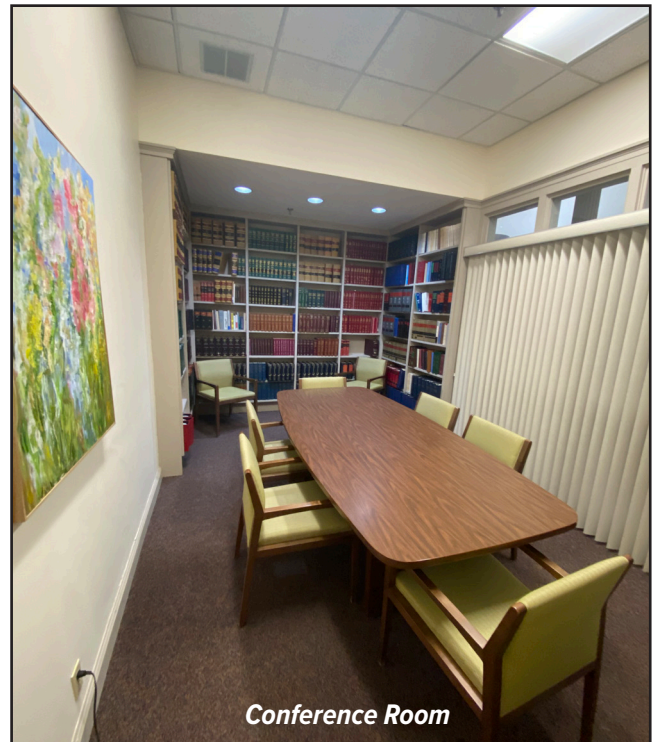
Suite Size	486± SF
Lease Rate	\$1,100/month Gross
Suite Notes	Tenant responsible for phone and internet

Suite 212

Suite Size	440± SF
Lease Rate	\$1,200/month Gross
Suite Notes	Tenant responsible for phone and internet

Suite 217

Suite Size	452± SF
Lease Rate	\$1,150/month Gross
Suite Notes	Tenant responsible for phone and internet



Suite 410

Suite Size	300± SF
Lease Rate	\$530/month Gross
Suite Notes	Tenant responsible for phone and internet

Suite 420

Suite Size	990± SF
Lease Rate	\$1,500/month Gross
Suite Notes	Tenant responsible for phone and internet

