

# FOR SUBLEASE | CLASS A OFFICE SPACE

130 MIDDLE STREET, PORTLAND, ME 04101



## PROPERTY HIGHLIGHTS

- Conveniently positioned in the heart of Portland's Old Port and one of downtown's most prominent commercial corridors
- Class A office space with significant office build out
- Easy walking distance to Portland's premier restaurants, bars, and cafés
- Parking spaces available at Custom House Garage
- Lease Rate: \$24.00/SF MG



# FOR SUBLEASE | CLASS A OFFICE SPACE

130 MIDDLE STREET, PORTLAND, ME 04101

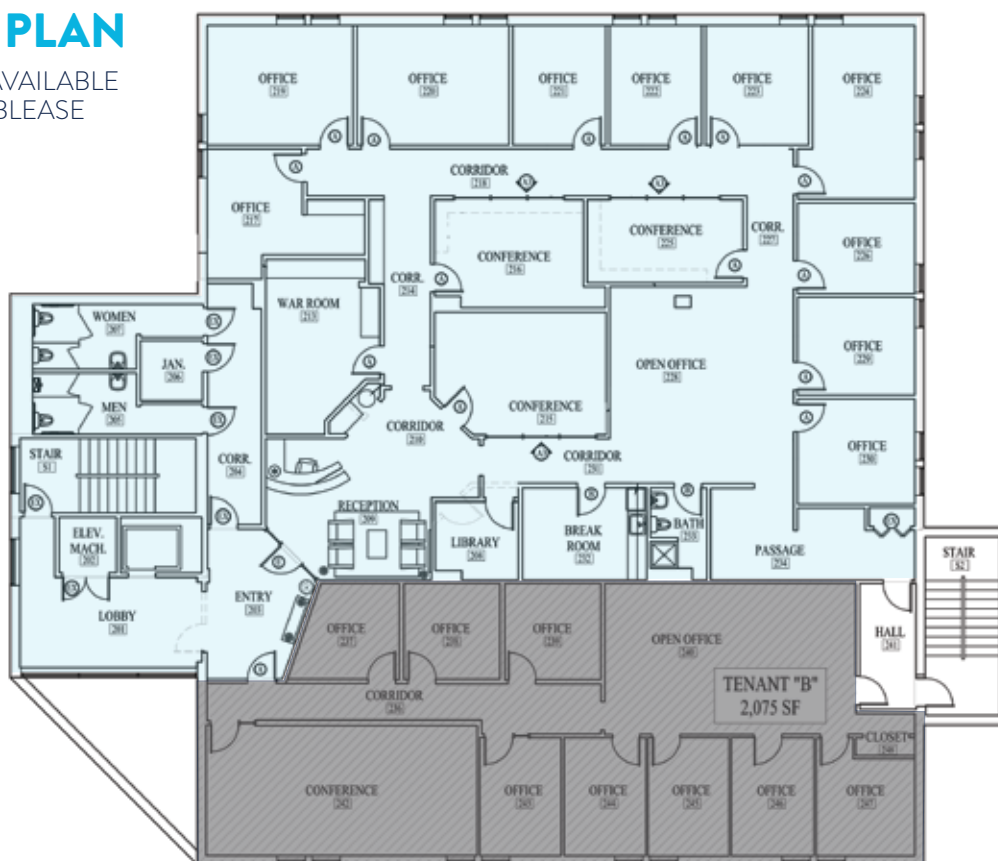


## PROPERTY DETAILS

OWNER	ELC Limited Liability Company
SUBLANDLORD	Old Port Advisors
OFFICE CLASS	A
INTERIOR OFFICE SPACE	11 private offices, 2 conference rooms, kitchen, copy room, private bath, reception, and open space
SPACE AVAILABLE	5,172± SF
YEAR BUILT	1982
ZONING	B-3 Downtown Business
WALKABILITY SCORE	98
HVAC	Central HVAC
UTILITIES	Municipal water & sewer
SPRINKLERS	Dry system
CURRENT TENANTS	Purdy, Powers, & Associates and Androscoggin Bank
AREA BUSINESSES	Oddfellahs, Bard Coffee, Cuties, Market Street Eats, Regency Hotel, Portland Art Gallery, Anthropologie, Madewell, Free People, and many more!
PARKING	Custom House Parking Garage (11 parking spaces with existing lease)
LEASE RATE	<b>\$24.00/SF MG</b>

## FLOOR PLAN

SPACE AVAILABLE FOR SUBLEASE



# FOR SUBLEASE | CLASS A OFFICE SPACE

130 MIDDLE STREET, PORTLAND, ME 04101



# FOR SUBLEASE | CLASS A OFFICE SPACE

130 MIDDLE STREET, PORTLAND, ME 04101



## CONTACT



**CLAIRE RICHARDSON**  
Associate Broker  
207.880.4607 C  
crichardson@boulos.com



©2026 The Boulos Company, Inc. All rights reserved. This information has been obtained from sources believed reliable but has not been verified for accuracy or completeness. You should conduct a careful, independent investigation of the property and verify all information. Any reliance on this information is solely at your own risk. The Boulos Company and The Boulos Company logo are service marks of The Boulos Company, Inc. All other marks displayed on this document are the property of their respective owners. Photos herein are the property of their respective owners. Use of these images without the express written consent of the owner is prohibited.