

FOR LEASE | PREMIER RETAIL SPACE

72 MARKET STREET, SCARBOROUGH, ME 04074



PROPERTY HIGHLIGHTS

The Downs is redefining what retail looks like in Maine. This isn't a traditional shopping center—it's a new Town Center and a rare opportunity to be part of a modern retail experience built around real community and daily life.



Located just before the I-295/I-95 split, The Downs captures some of the highest traffic counts in the state, putting your business in front of thousands every day. With more than 700 homes already complete—and another 1,300 planned—your customer base isn't coming someday, it's already here. Over 50 businesses are open and thriving, creating a vibrant, walkable ecosystem of activity connected by trails and bike lanes.

This is where people shop, live, gather, and return again and again.

Join the momentum. Live it up at The Downs.

- 2,000± SF of leaseable retail space within a 4,100± SF building
- Available for occupancy Summer 2027
- Contact brokers for pricing



FOR LEASE | PREMIER RETAIL SPACE

72 MARKET STREET, SCARBOROUGH, ME 04074



PROPERTY DETAILS

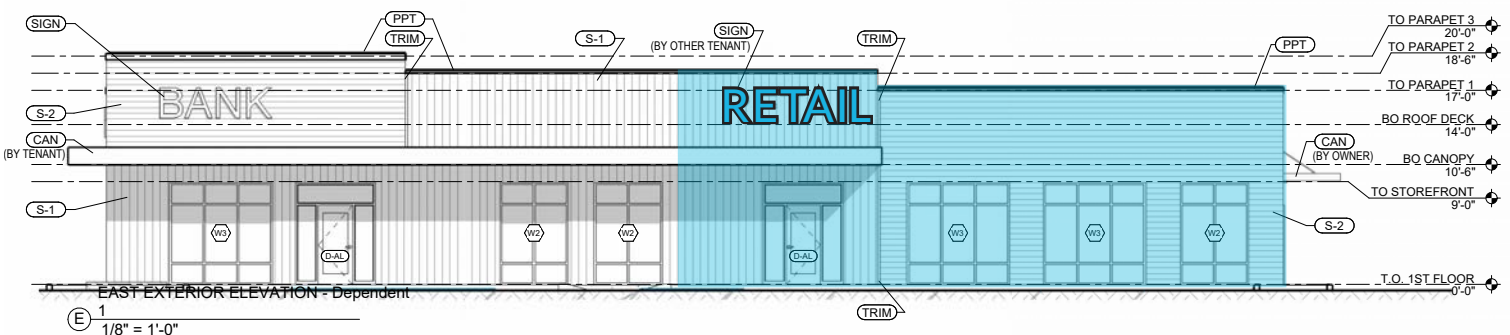
LANDLORD	MRW Town Center Development, LLC						
BUILDING DESCRIPTION	Two-tenant, single-story retail building. 50% leased to regional bank.						
ZONING	CPD - Crossroads Planned Development District						
USE RESTRICTIONS	Restrictions exist on grocery, retail banking, and certain medical uses. Ask broker for additional details						
AVAILABLE SPACE	<table border="0"> <tr> <td>2,000± SF</td> <td>Suite 1</td> <td>Under Contract</td> </tr> <tr> <td>2,000± SF</td> <td>Suite 2</td> <td>Retail</td> </tr> </table>	2,000± SF	Suite 1	Under Contract	2,000± SF	Suite 2	Retail
2,000± SF	Suite 1	Under Contract					
2,000± SF	Suite 2	Retail					
UTILITIES	Municipal water & sewer, underground electric, fiber optic						
HEATING/COOLING	Separately metered, gas-fired units						
ANCHOR BUSINESSES	Costco, Intermed, Allagash, Maine Mariners, and Market Basket (Opening November 2026)						
LEASE RATE	See broker for details						

AVERAGE DAILY TRAFFIC

I-95 SOUTHBOUND	43,430
I-95 NORTHBOUND	41,500
PAYNE ROAD	20,670
US-1 SOUTHBOUND	17,370
US-1 NORTHBOUND	13,950

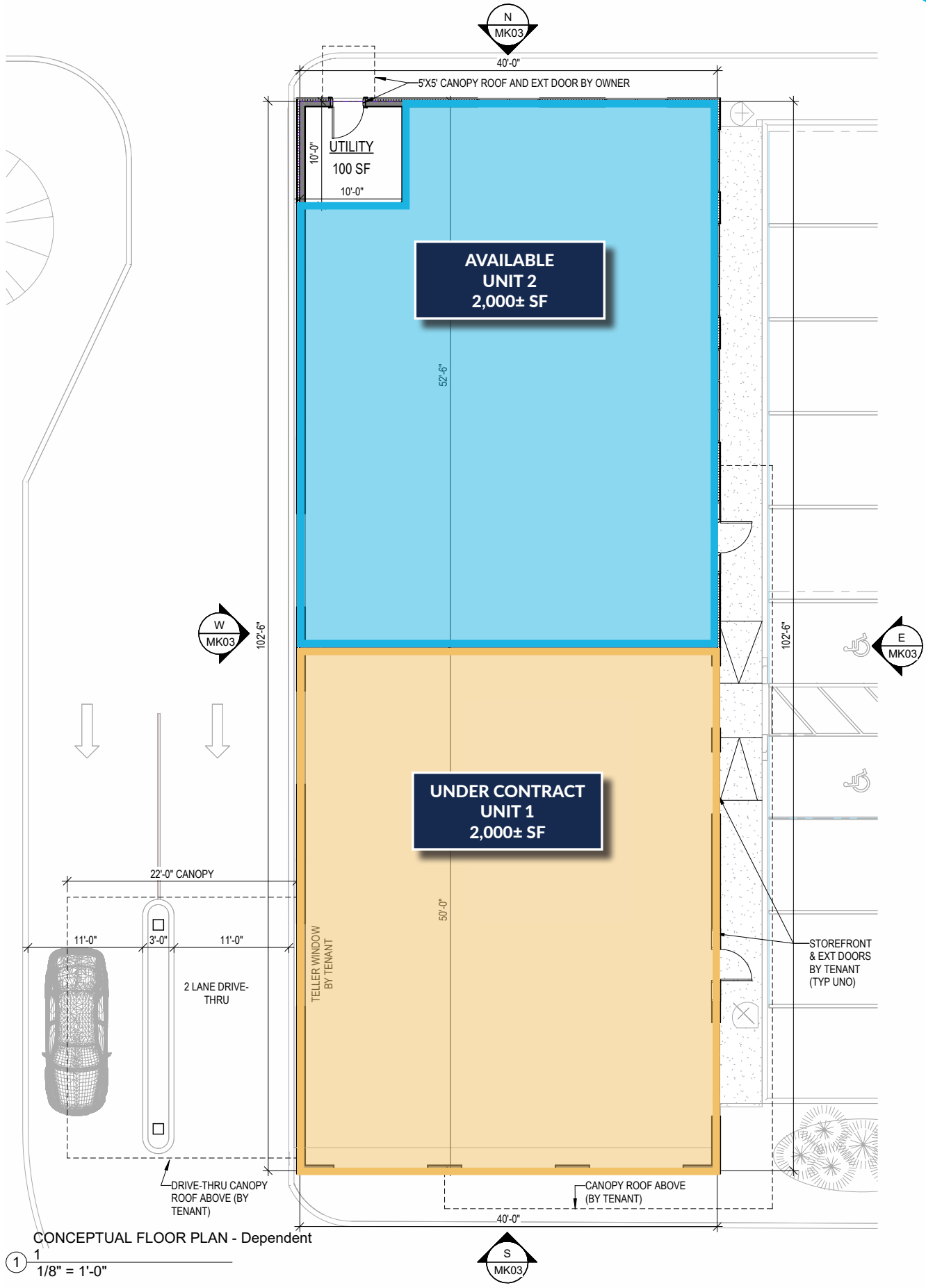
VISITATION DATA - COSTCO

TOTAL ANNUAL VISITS	1.9 MILLION
DWELL TIME	45 MINUTES
AVERAGE DRIVE TIME	40 MINUTES
AVERAGE SPEND	\$84.00



FOR LEASE | PREMIER RETAIL SPACE

72 MARKET STREET, SCARBOROUGH, ME 04074



FOR LEASE | PREMIER RETAIL SPACE

72 MARKET STREET, SCARBOROUGH, ME 04074



THE
Downs


THE BOULOS
COMPANY

wilder

MR
DEVELOPMENT

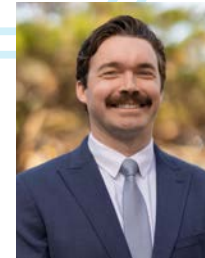
CONTACT US



JON RIZZO, SIOR
Partner, Broker
207.553.1712 D
207.233.3304 C
jrizzo@boulos.com



DREW SIGFRIDSON, SIOR
Senior Partner
207.553.1705 D
207.831.5838 C
dsigfridson@boulos.com



NATE ROOP
Associate
207.553.1737 D
207.756.0032 C
nroop@boulos.com

©2026 The Boulos Company, Inc. All rights reserved. This information has been obtained from sources believed reliable but has not been verified for accuracy or completeness. You should conduct a careful, independent investigation of the property and verify all information. Any reliance on this information is solely at your own risk. The Boulos Company and The Boulos Company logo are service marks of The Boulos Company, Inc. All other marks displayed on this document are the property of their respective owners. Photos herein are the property of their respective owners. Use of these images without the express written consent of the owner is prohibited.