

AVISON
YOUNG

330

BILLERICA ROAD
CHELMSFORD, MA

18,159 - 44,911 SF OFFICE/R&D SPACE AVAILABLE



STRONG OWNERSHIP



NEWLY RENOVATED LOBBY



EXCELLENT NATURAL LIGHT



HIGHWAY VISIBILITY



PRESSED CAFÉ WITH DRIVE-IN



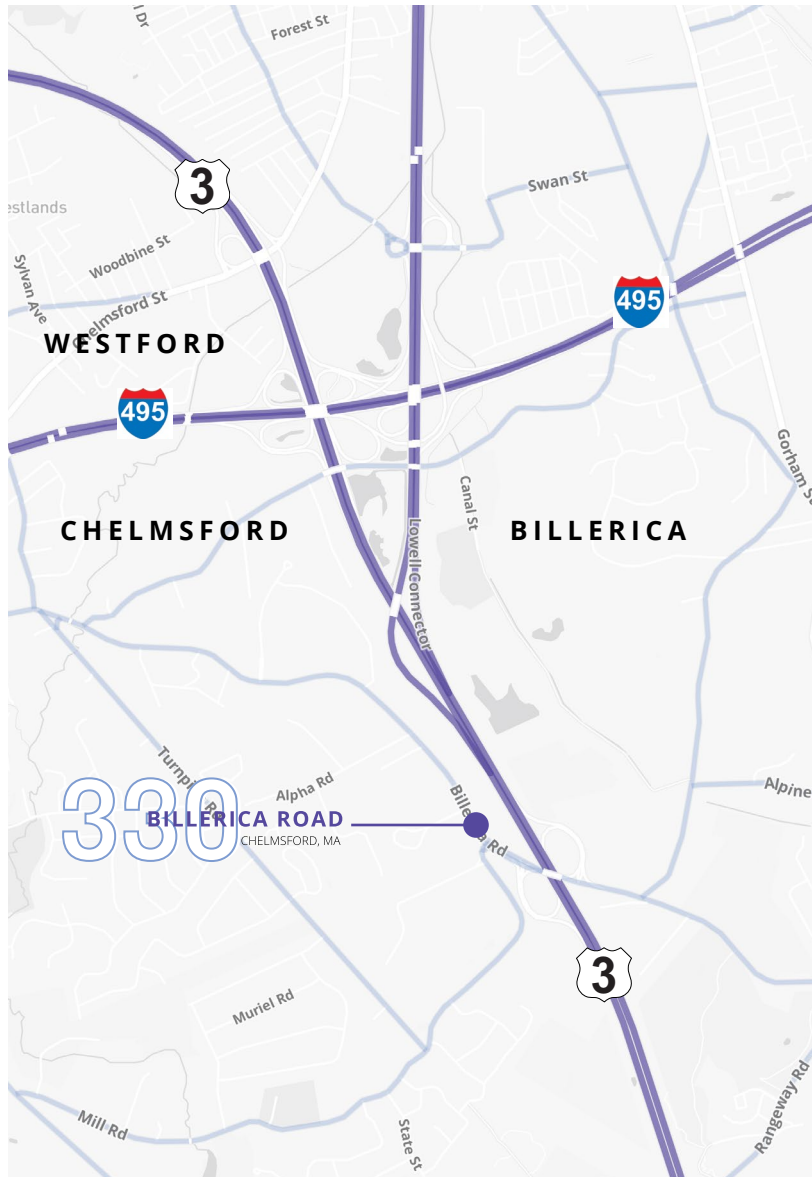
**TAILBOARD LOADING
& FREIGHT ELEVATOR**

330 BILLERICA ROAD

CHELMSFORD, MA

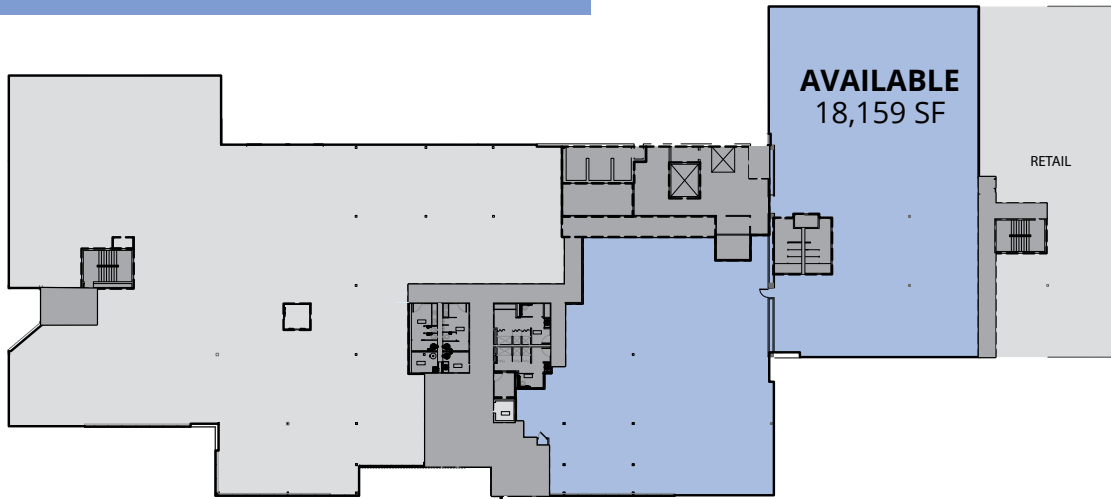
BUILDING SPECIFICATIONS

Building Size	100,262 SF
Available	1st Floor: 18,159 SF 2nd Floor: 26,752 SF
Year Built	1984
Parking Ratio	4.04/1,000 SF
Power	3000A, 208 V
Roof	2015- tinobond TPO roof
Loading Docks	One
Sprinklers	Wet
HVAC	75 5-ton single zone package units in the roof
Generator	800kw diesel generator with 1,000- gallon tank
Clear Height to beam:	1st Floor: 11' 2.5" 2nd Floor: 11'7"
Telecom:	Comcast hi-speed fiber

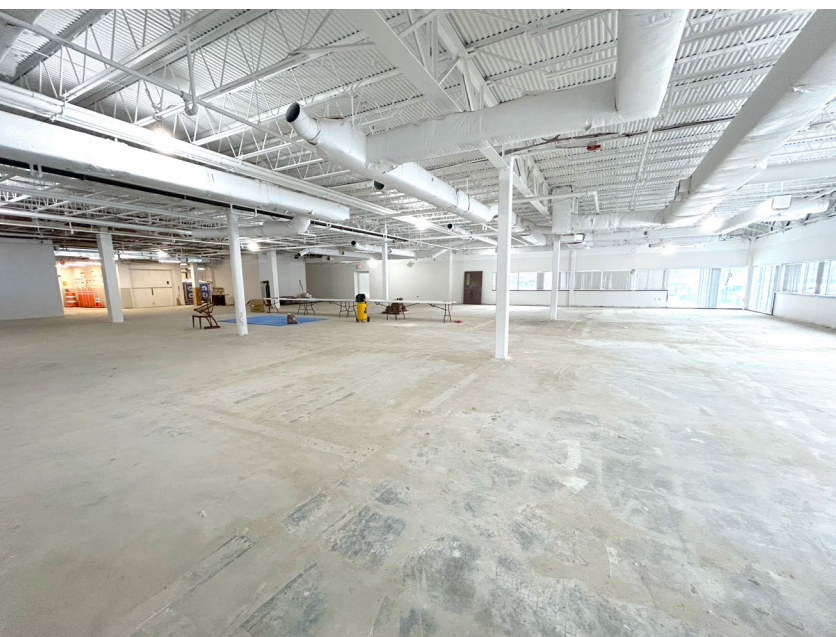
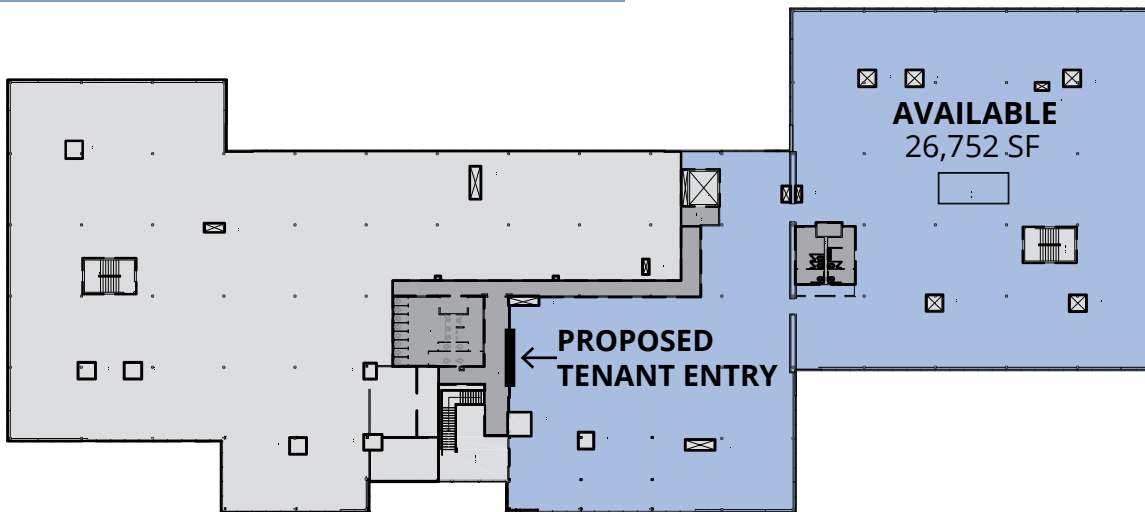


**AVISON
YOUNG**

FIRST FLOOR: 18,159 SF



SECOND FLOOR: 26,752 SF





JASON LEVENDUSKY

Principal
617 448 4004
jason.levendusky@avisonyoung.com

JUSTIN DZIAMA

Principal
617 366 1004
justin.dziama@avisonyoung.com

JAY CARNEVALE

Senior Associate
617 702 8864
jay.carnevale@avisonyoung.com

CHRIS REILLY

Senior Associate
781 956 8989
chris.reilly@avisonyoung.com

200 STATE STREET, 15TH FLOOR, BOSTON MA

© 2025, Avison Young - New England, LLC. The information contained herein was obtained from sources which we deem reliable and, while thought to be correct, is not guaranteed by Avison Young and as such, cannot be warranted nor form any part of any future contract.

