

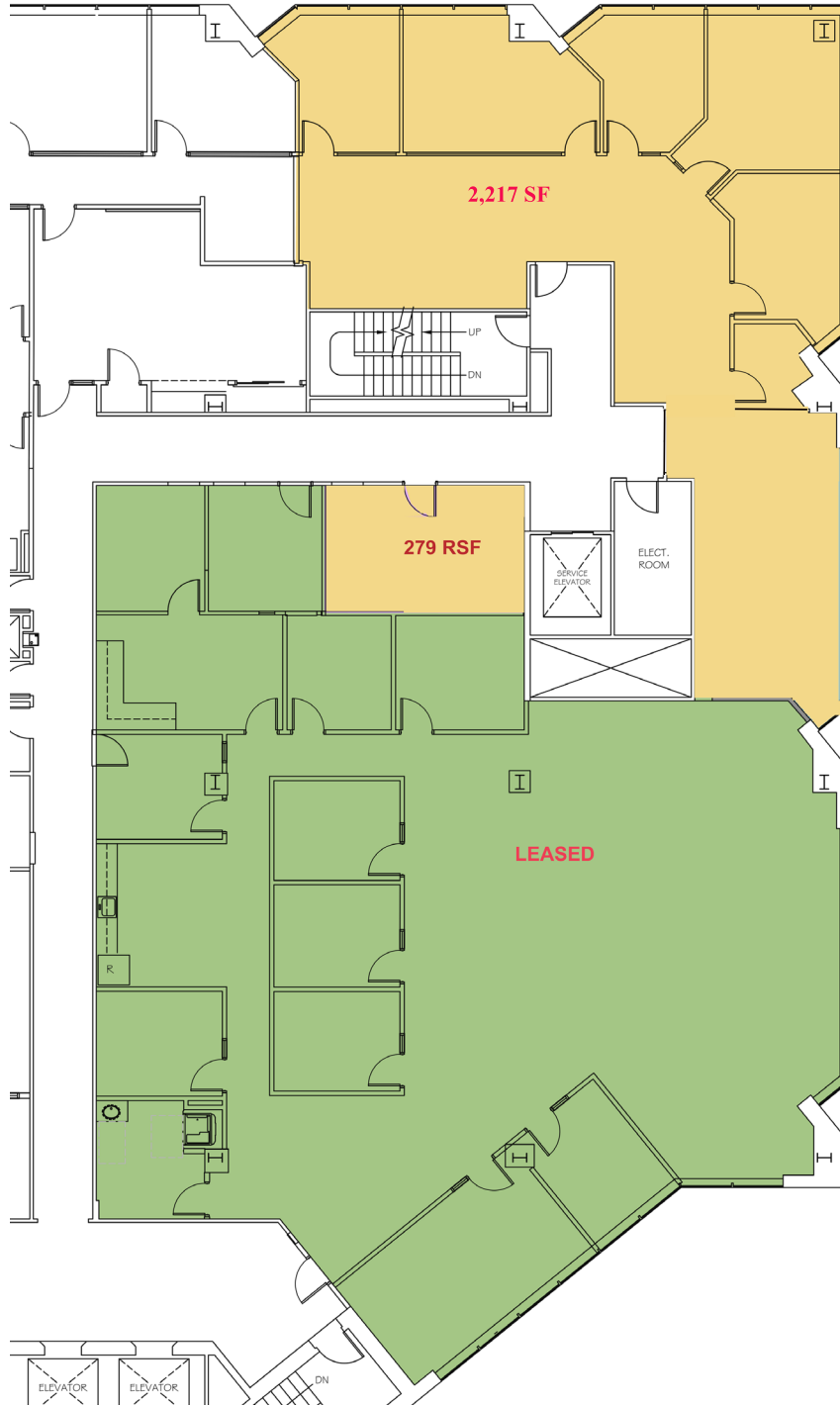


**CUSHMAN &  
WAKEFIELD**

MANCHESTER, NH

**1155 ELM STREET**

4th Floor 2,496 RSF (not to scale)



**Denis C.J. Dancoes II**  
Senior Director  
denis.dancoes@cushwake.com

Cushman & Wakefield of New Hampshire, Inc.  
900 Elm Street, Suite 1301  
Manchester, NH 03101  
(603) 628-2800  
cushmanwakefield.com

The information contained in this communication is strictly confidential. NO WARRANTY OR REPRESENTATION, EXPRESS OR IMPLIED, IS MADE AS TO THE CONDITION OF THE PROPERTY (OR PROPERTIES) REFERENCED HEREIN OR AS TO THE ACCURACY OR COMPLETENESS OF THE INFORMATION CONTAINED HEREIN, AND SAME IS SUBMITTED SUBJECT TO ERRORS, OMISSIONS, CHANGE OF PRICE, RENTAL OR OTHER CONDITIONS, WITHDRAWAL WITHOUT NOTICE, AND TO ANY SPECIAL LISTING CONDITIONS IMPOSED BY THE PROPERTY OWNER(S). ANY PROJECTIONS, OPINIONS OR ESTIMATES ARE SUBJECT TO UNCERTAINTY AND DO NOT SIGNIFY CURRENT OR FUTURE PROPERTY PERFORMANCE.