

**FOR  
LEASE**

## **LEASE RATE**

OFFICE: \$28.00/SF MG

## **2 PORTLAND SQUARE PORTLAND, ME**

## **PROPERTY HIGHLIGHTS**

Office space available for lease at one of Portland's premier downtown Class A office towers. Located in the heart of Portland's financial district, in close proximity to the historic Old Port and Portland's iconic waterfront.

- 4,823± SF of office space available on the 4th floor.
- Beautifully maintained brick and glass facade.
- On-site amenities include cafe, restaurant, property management and building security.
- Market rate parking available in on-site lots.



## PROPERTY HIGHLIGHTS

**LANDLORD** North River IV, LLC

**ZONING** B-3 Business Downtown

**AVAILABLE SPACE** 4th floor: 4,823± SF

**BUILDING SIZE** 145,409± SF

**NO. OF STORIES** Seven (7)

**YEAR BUILT** 1990

**PARKING** Market-rate parking available in the professionally managed on-site & adjacent surface lots.

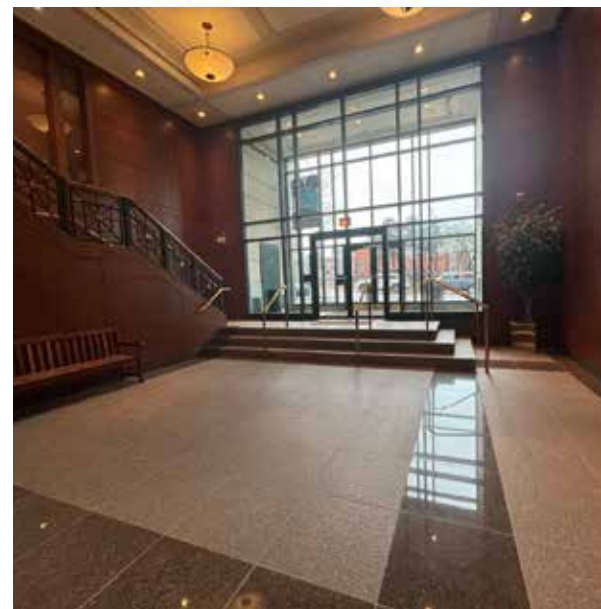
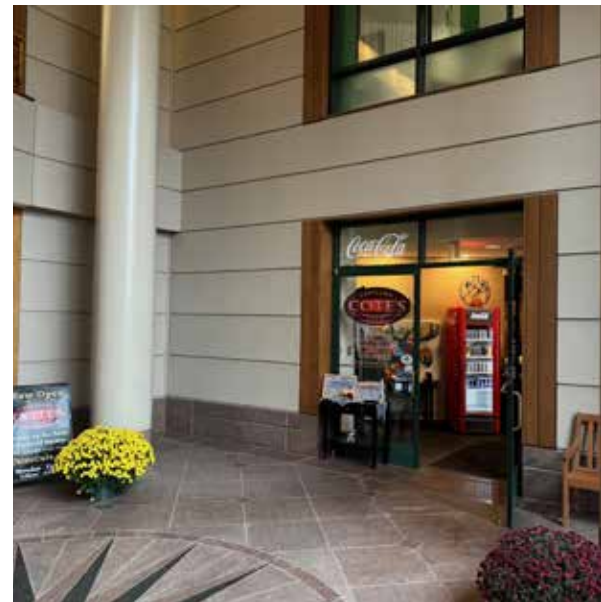
\*Visitor and client parking also available.

**WALK SCORE®** 95 - Walker's Paradise

### AMENITIES

- Cote's Cafe
- Lenora restaurant
- The Raven Salon
- Pure Barre studio
- Drive Thru ATM
- On-site management & maintenance staff

**LEASE RATES** 4th floor: \$28.00/SF MG



## 4TH FLOOR PHOTOS & LAYOUT



# FOR LEASE 2 PORTLAND SQUARE PORTLAND, ME 04101



## CONTACT US



**DREW SIGFRIDSON, SIOR**  
Broker  
+1 207.772.1333 D  
+1 207.831.5838 C  
dsigfridson@boulos.com



**BRICE O'CONNOR**  
Broker  
+1 207.553.1725 D  
+1 603.674.2272 C  
boconnor@boulos.com

©2025 The Boulos Company, Inc. All rights reserved. This information has been obtained from sources believed reliable, but has not been verified for accuracy or completeness. You should conduct a careful, independent investigation of the property and verify all information. Any reliance on this information is solely at your own risk. The Boulos Company and The Boulos Company logo are service marks of The Boulos Company, Inc. All other marks displayed on this document are the property of their respective owners. Photos herein are the property of their respective owners. Use of these images without the express written consent of the owner is prohibited.