



Property Highlights

- 3,510 ± SF Office Suite at the intersection of Congress and State St.
- Ample windows allow for impressive natural lighting and provide great views
- 2 Private bathrooms
- Parking is available in nearby Landlord owned lots
- Centrally located in Longfellow Square
- Lease Rate: \$20/SF Modified Gross



Owner: Longfellow Square LLC

Building Size: 15,200± SF

Utilities: central heat & AC

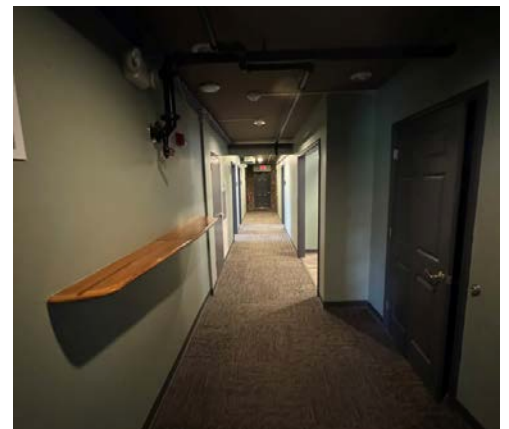
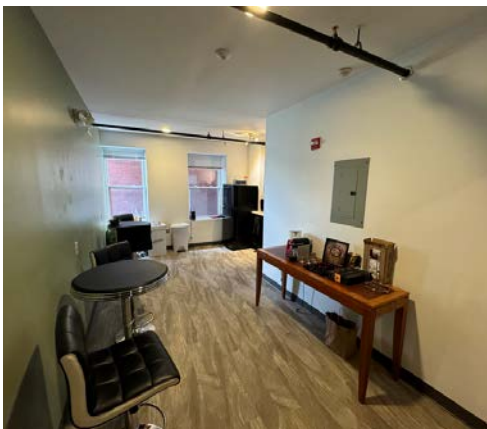
Parking: Market Rate, in nearby Landlord lot

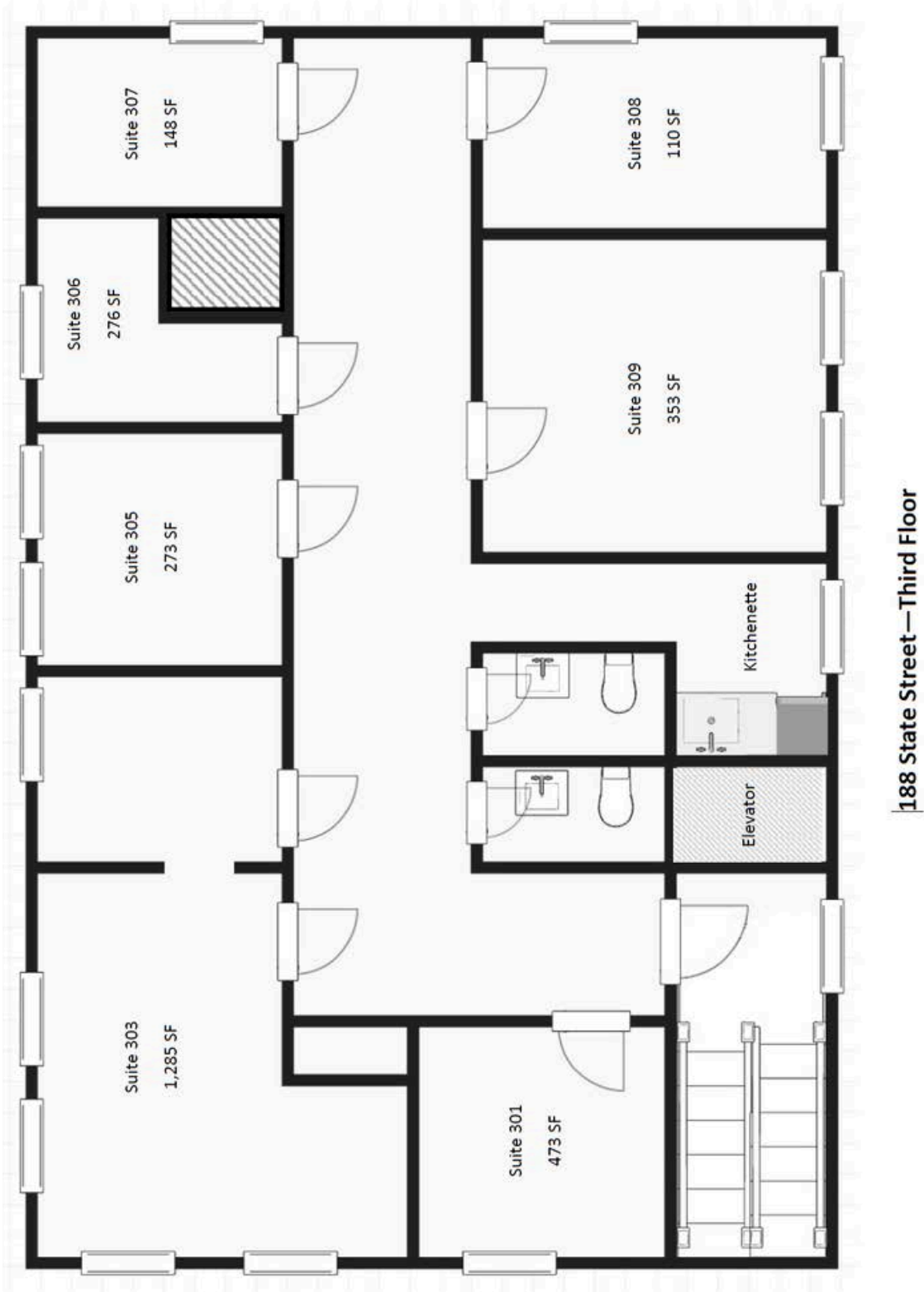
Restrooms: In Suite

Elevator(s): Yes, one (1)

Available Space(s):

188 State St, 3rd Floor	3,510± SF	\$20/SF MG
-------------------------	-----------	------------





PORTA
& CO.

Photos

188 State Street | Portland, ME



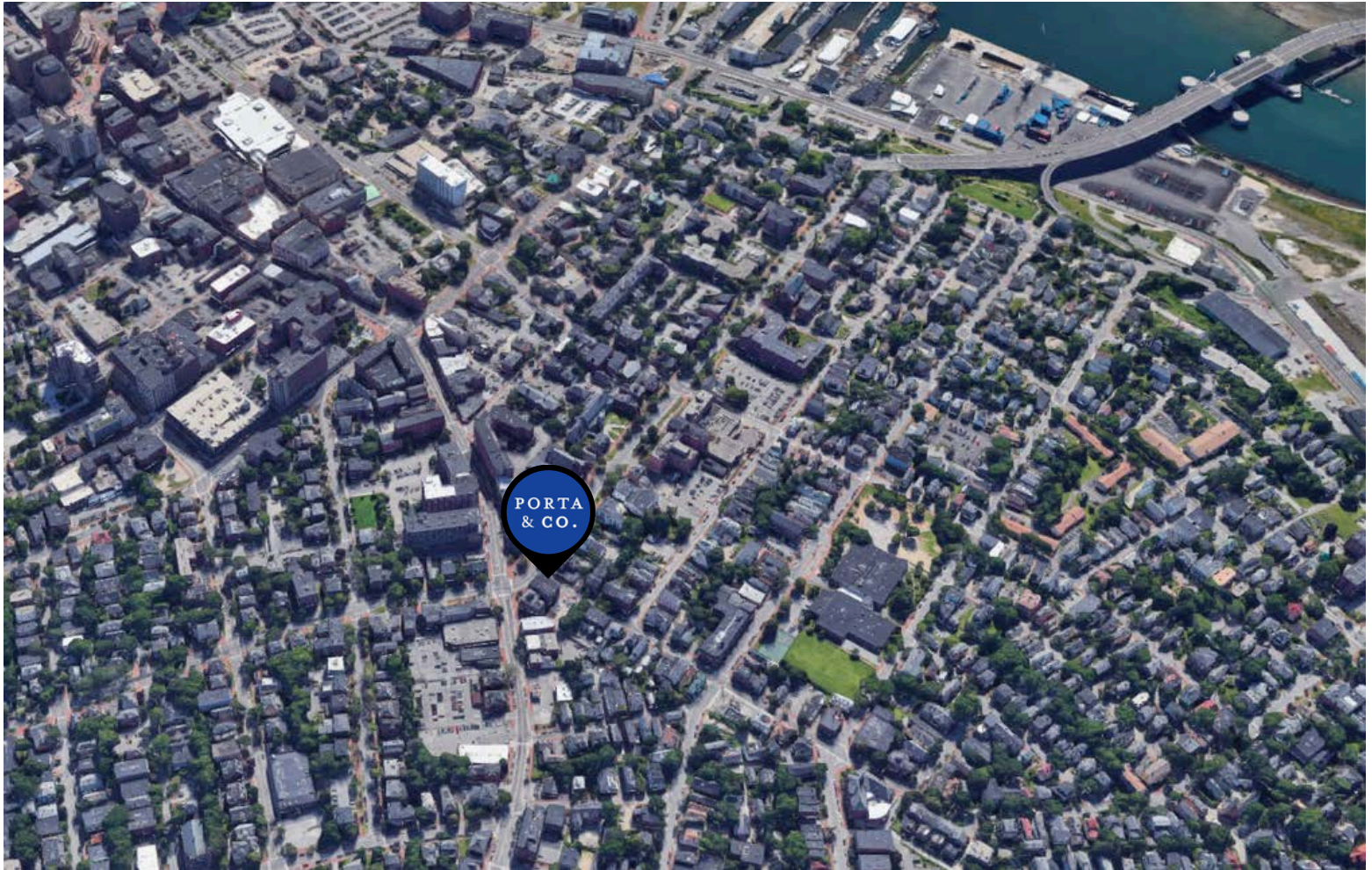
PORTA & CO. | 30 Milk Street, Second Floor | Portland, ME 04101 | (207)-747-1515

www.portacompany.com

PORTA
& CO.

Property Aerial

188 State Street | Portland, ME



CONTACT



Peter Gwilym

Broker

c: 207-272-4262

o: 207-558-0901

pgwilym@portacompany.com

This information has been obtained from sources believed reliable and is intended for informational use only. The information contained herein has not been verified for accuracy or completeness. It is recommended that prospective tenants and buyers conduct their own inspection of the property and verify all information. Any reliance on this information is solely at your own risk. Photos herein are the property of their respective owners. Use of these images without the express written consent of the owner is prohibited.

PORTA & CO.

COMMERCIAL REAL ESTATE

30 Milk Street, Second Floor

Portland, ME 04101

207-747-1515

www.portacompany.com