

FOR LEASE • INDUSTRIAL SPACE

386 Hill Street • Biddeford, ME



Andrew Ingalls
O 207.358.7024
C 207.671.6162
Andrew@malonecb.com

20,000± SF INDUSTRIAL SPACE

- Industrial warehouse on 1.67± AC lot
- 18,050 ± SF of warehouse space and 1,950± SF of heated office space
- On-site parking for 35+ vehicles
- Two overhead doors and one loading dock
- Excellent location just minutes from I-95

LEASE RATE: \$7.75/SF NNN
CAM's estimated at \$1.75/SF



PROPERTY SUMMARY

386 Hill Street • Biddeford, ME



Site Info

OWNER:	Michael Foshay
DEED:	Book 14137 Page 0905
ASSESSOR:	Map 88 Lot 3
LOT SIZE:	1.67± AC
SIGNAGE:	Pylon at street and on building
PARKING:	35+; 1.8:1 ratio
ZONING:	I2 Industrial
TAXES:	\$14,333.75 (2025)



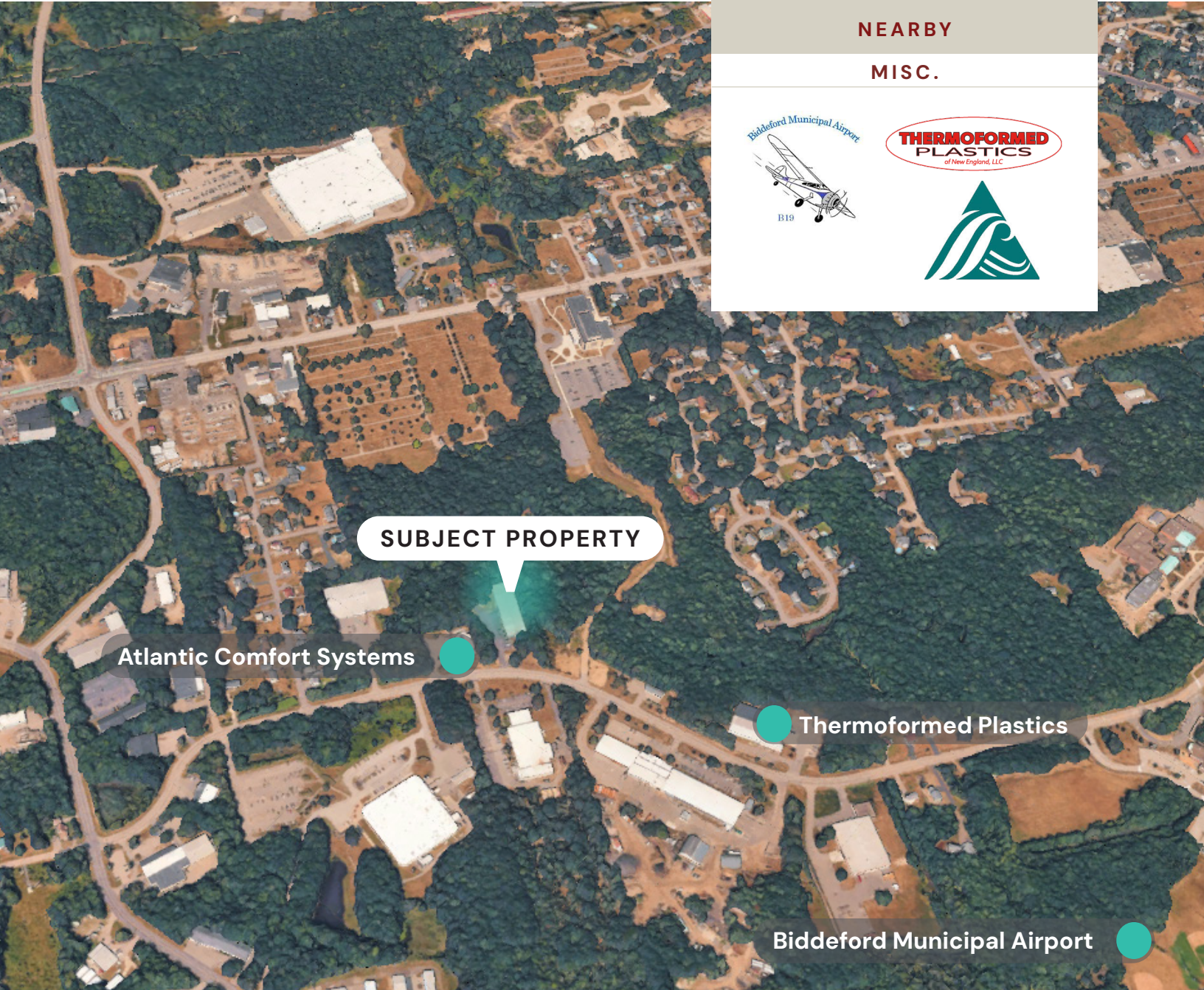
Building Info

BUILDING SIZE:	20,000± SF
CONFIGURATION:	18,050± SF warehouse 1,905± SF office
YEAR BUILT:	1985
STORIES:	One (1)
CONSTRUCTION:	Steel frame
ROOF:	Metal
SIDING:	Aluminum siding and brick
FLOORING:	Concrete
FOUNDATION:	Slab
CEILING HEIGHT:	13'±
COLUMN SPACING:	25'±
WAREHOUSE ACCESS:	Two overhead doors One loading dock
ELECTRICITY:	200 amps
HEATING:	Heat pump in office None in warehouse
UTILITIES:	Municipal water and sewer
LIGHTING:	LED
RESTROOM:	Two (2)



LOCATION MAP

386 Hill Street • Biddeford, ME



NEARBY

MISC.



This document has been prepared by Malone Commercial Brokers for advertising and general information only. Malone Commercial Brokers makes no guarantees, representations or warranties of any kind, expressed or implied, regarding, but not limited to, warranties of content, accuracy, and reliability. Any interested party should undertake their own inquiries as to the accuracy of the information. Malone Commercial Brokers excludes unequivocally all informed or implied terms, conditions and warranties arising out of this document and excludes all liability for loss and damages there from. All data is subject to change of price, error, omissions, other conditions or withdrawal without notice. Malone Commercial Brokers is acting as the Seller's/Lessor's agent in the marketing of this property.