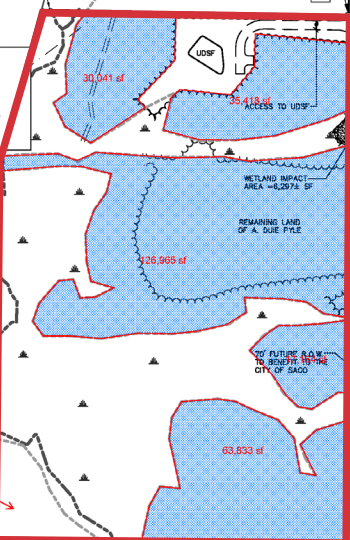
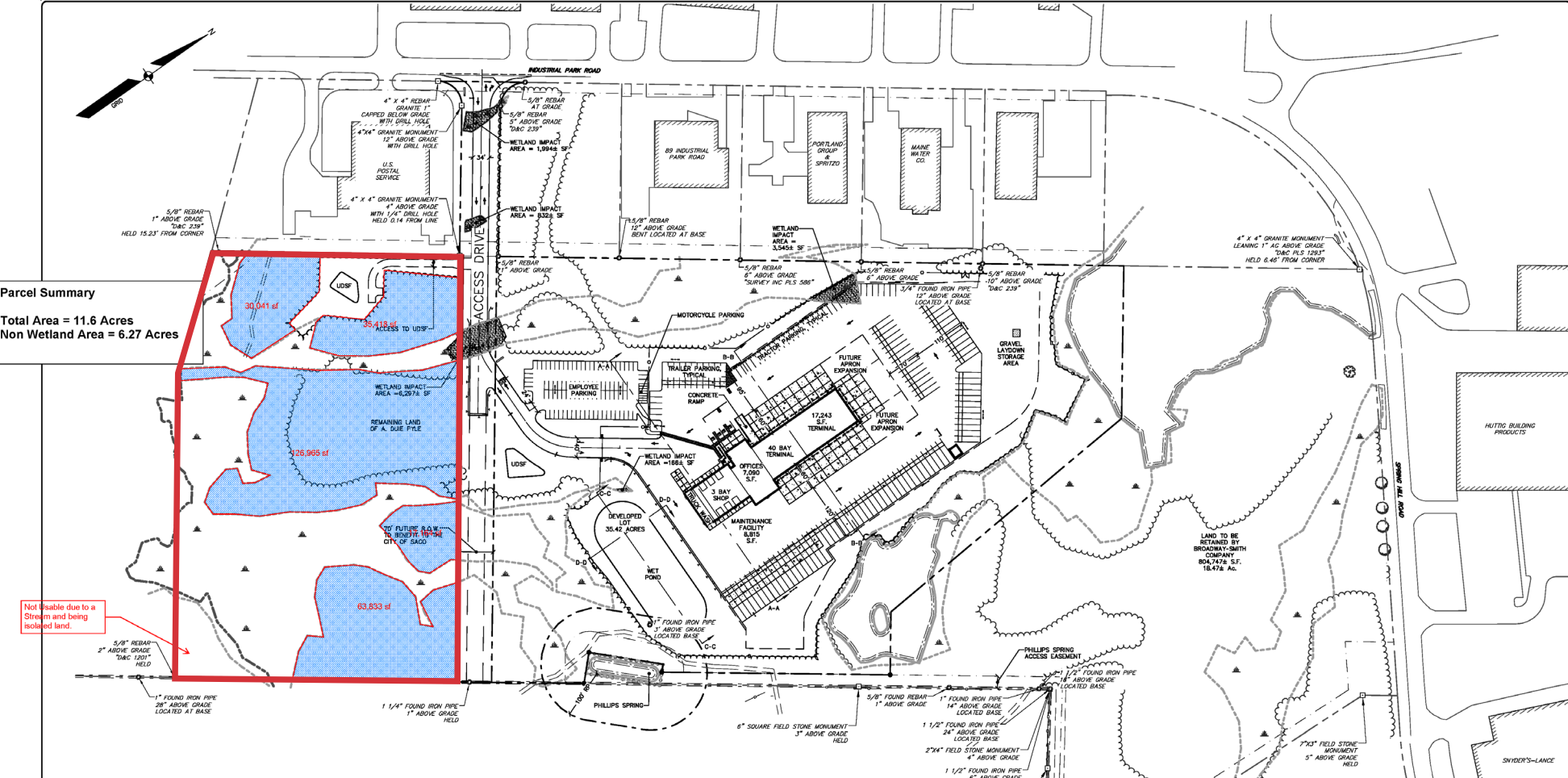


Parcel Summary
 Total Area = 11.6 Acres
 Non Wetland Area = 6.27 Acres



Not feasible due to Stream and being isolated land.



GENERAL NOTES:

- THE RECORD OWNER OF THE PARCEL IS BROCKWAY-SMITH COMPANY BY DEED DATED NOVEMBER 12, 2002 AND RECORDED AT THE YORK COUNTY REGISTRY OF DEEDS IN BOOK 12164, PAGE 204.
- THE PROPERTY IS SHOWN AS LOT 2 ON THE CITY OF SACO TAX MAP 72 AND IS LOCATED IN THE INDUSTRIAL PARK (I-1) DISTRICT WITH PORTIONS IN THE RESOURCE PROTECTION DISTRICT.
- SPACE AND BULK CRITERIA FOR THE I-1 DISTRICT ARE AS FOLLOWS:
 MINIMUM LOT SIZE: 40,000 SQ FT
 MINIMUM STREET FRONTAGE: 150 FT
 MINIMUM DEPTH FRONT YARD: 50 FT
 MINIMUM SIDE YARD: 25 FT
 MINIMUM REAR YARD: 25 FT
 MAXIMUM BUILDING HEIGHT: 60 FT
 MAXIMUM LOT COVERAGE: 40%
 * SEE ORDINANCE FOR MORE PARTICULAR INFORMATION.
- TOTAL AREA OF DEVELOPMENT PARCEL IS APPROXIMATELY 35.42 ACRES.
- BOUNDARY AND TOPOGRAPHIC INFORMATION SHOWN HEREIN IS BASED UPON A FIELD SURVEY PERFORMED BY SEBAGO TECHNICS, INC. IN MARCH OF 2017 WITH AN AVERAGE SNOW DEPTH OF 12"-18".
- A WETLAND DELINEATION WAS PERFORMED ON THIS PROJECT SITE IN FALL OF 2016 BY POWER ENGINEERS. WETLAND FLAGS WITHIN THE PROPOSED DEVELOPMENT AREAS WERE LOCATED BY GROUND SURVEY. WETLAND FLAGS OUTSIDE OF THE PROPOSED DEVELOPMENT AREA WERE LOCATED USING GLOBAL POSITIONING SYSTEM (GPS) TECHNOLOGY CAPABLE OF DECMETER ACCURACY. REFER TO REPORTS DATED JANUARY 8, 2016 AND NOVEMBER 20, 2017.
- PROJECT SITE IS SUBJECT TO A MAINE DEPARTMENT OF ENVIRONMENTAL PROTECTION SITE LOCATION OF DEVELOPMENT ACT PERMIT.
- PROJECT IS SUBJECT TO A MAINE DEPARTMENT OF ENVIRONMENTAL PROTECTION NATURAL RESOURCES PROTECTION ACT PERMIT FOR WETLAND ALTERATION.
- PROJECT IS SUBJECT TO A UNITED STATES ARMY CORP OF ENGINEERS MAINE GENERAL PERMIT FOR 13,173 S.F. OF WETLAND ALTERATION, PERMIT NO. MAE-2016-00408.

10. PARKING SUMMARY:

-TOTAL BUILDING FLOOR AREA:	33,185 S.F.	
-REQUIRED PARKING (OFFICE-8.00 S.F.):	1 SPACE PER 250 S.F. =	28 SPACES
-REQUIRED PARKING (INDUSTRIAL USE-24 EMPLOYEES):	1 SPACE PER EMPLOYEE ON THE MAIN SHEET#	24 SPACES
		54 SPACES
-TOTAL PARKING PROVIDED=		
	PASSENGER VEHICLES=	81 SPACES
	MOTORCYCLE SPACES=	8 SPACES
	HANDICAP SPACES=	6 SPACES
	TOTAL=	103 SPACES

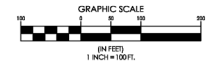
11. DEVELOPMENT SUMMARY

TOTAL DEVELOPED SITE AREA:	13.52 ACRES
TOTAL NON-VEGETATED SURFACE AREA:	9.94 ACRES

LEGEND

EXISTING	PROPOSED
--- PROPERTY LINE/R.O.W.	--- ADJUTER LINE/R.O.W.
--- SETBACK	--- EASEMENT
□ MONUMENT	○ IRON PIPE/ROD
--- ZONE LINE ON PL.	--- BENCHMARK
○ TP-1	○ TEST PIT
○ B-1	○ BORING
--- EDGE WETLAND	--- EDGE PAVEMENT
--- WETLANDS	--- EDGE GRAVEL
--- EDGE OF WATER	--- TREELINE
--- CHAIN LINK FENCE	○ TRAFFIC FLOW

**APPROVAL-
CITY OF SACO
PLANNING BOARD**



STATE OF MAINE
 RECEIVED _____ COUNTY SS REGISTRY OF DEEDS
 AT _____ M. AND RECORDED IN
 PLAN BOOK _____ PAGE _____
 ATTEST _____ REGISTRAR

OWEN A. MCLOUGHER, PE 7132



DESIGNED	CHECKED
OAM	OAM
1. 01-22-18 15'00' CONSTRUCTION DRAWING SET 2. 01-22-18 15'00' ISSUED FOR FINAL CHECK SET 3. 01-22-18 15'00' ISSUED FOR PLANNING BOARD SIGNATURE 4. 01-22-18 15'00' ISSUED FOR UDES REVIEW 5. 01-22-18 15'00' ISSUED FOR UDES REVIEW 6. 01-22-18 15'00' ISSUED FOR UDES REVIEW 7. 01-22-18 15'00' ISSUED FOR UDES REVIEW 8. 01-22-18 15'00' ISSUED FOR UDES REVIEW 9. 01-22-18 15'00' ISSUED FOR UDES REVIEW 10. 01-22-18 15'00' ISSUED FOR UDES REVIEW 11. 01-22-18 15'00' ISSUED FOR UDES REVIEW 12. 01-22-18 15'00' ISSUED FOR UDES REVIEW 13. 01-22-18 15'00' ISSUED FOR UDES REVIEW 14. 01-22-18 15'00' ISSUED FOR UDES REVIEW 15. 01-22-18 15'00' ISSUED FOR UDES REVIEW 16. 01-22-18 15'00' ISSUED FOR UDES REVIEW 17. 01-22-18 15'00' ISSUED FOR UDES REVIEW 18. 01-22-18 15'00' ISSUED FOR UDES REVIEW 19. 01-22-18 15'00' ISSUED FOR UDES REVIEW 20. 01-22-18 15'00' ISSUED FOR UDES REVIEW 21. 01-22-18 15'00' ISSUED FOR UDES REVIEW 22. 01-22-18 15'00' ISSUED FOR UDES REVIEW 23. 01-22-18 15'00' ISSUED FOR UDES REVIEW 24. 01-22-18 15'00' ISSUED FOR UDES REVIEW 25. 01-22-18 15'00' ISSUED FOR UDES REVIEW 26. 01-22-18 15'00' ISSUED FOR UDES REVIEW 27. 01-22-18 15'00' ISSUED FOR UDES REVIEW 28. 01-22-18 15'00' ISSUED FOR UDES REVIEW 29. 01-22-18 15'00' ISSUED FOR UDES REVIEW 30. 01-22-18 15'00' ISSUED FOR UDES REVIEW 31. 01-22-18 15'00' ISSUED FOR UDES REVIEW 32. 01-22-18 15'00' ISSUED FOR UDES REVIEW 33. 01-22-18 15'00' ISSUED FOR UDES REVIEW 34. 01-22-18 15'00' ISSUED FOR UDES REVIEW 35. 01-22-18 15'00' ISSUED FOR UDES REVIEW 36. 01-22-18 15'00' ISSUED FOR UDES REVIEW 37. 01-22-18 15'00' ISSUED FOR UDES REVIEW 38. 01-22-18 15'00' ISSUED FOR UDES REVIEW 39. 01-22-18 15'00' ISSUED FOR UDES REVIEW 40. 01-22-18 15'00' ISSUED FOR UDES REVIEW 41. 01-22-18 15'00' ISSUED FOR UDES REVIEW 42. 01-22-18 15'00' ISSUED FOR UDES REVIEW 43. 01-22-18 15'00' ISSUED FOR UDES REVIEW 44. 01-22-18 15'00' ISSUED FOR UDES REVIEW 45. 01-22-18 15'00' ISSUED FOR UDES REVIEW 46. 01-22-18 15'00' ISSUED FOR UDES REVIEW 47. 01-22-18 15'00' ISSUED FOR UDES REVIEW 48. 01-22-18 15'00' ISSUED FOR UDES REVIEW 49. 01-22-18 15'00' ISSUED FOR UDES REVIEW 50. 01-22-18 15'00' ISSUED FOR UDES REVIEW 51. 01-22-18 15'00' ISSUED FOR UDES REVIEW 52. 01-22-18 15'00' ISSUED FOR UDES REVIEW 53. 01-22-18 15'00' ISSUED FOR UDES REVIEW 54. 01-22-18 15'00' ISSUED FOR UDES REVIEW 55. 01-22-18 15'00' ISSUED FOR UDES REVIEW 56. 01-22-18 15'00' ISSUED FOR UDES REVIEW 57. 01-22-18 15'00' ISSUED FOR UDES REVIEW 58. 01-22-18 15'00' ISSUED FOR UDES REVIEW 59. 01-22-18 15'00' ISSUED FOR UDES REVIEW 60. 01-22-18 15'00' ISSUED FOR UDES REVIEW 61. 01-22-18 15'00' ISSUED FOR UDES REVIEW 62. 01-22-18 15'00' ISSUED FOR UDES REVIEW 63. 01-22-18 15'00' ISSUED FOR UDES REVIEW 64. 01-22-18 15'00' ISSUED FOR UDES REVIEW 65. 01-22-18 15'00' ISSUED FOR UDES REVIEW 66. 01-22-18 15'00' ISSUED FOR UDES REVIEW 67. 01-22-18 15'00' ISSUED FOR UDES REVIEW 68. 01-22-18 15'00' ISSUED FOR UDES REVIEW 69. 01-22-18 15'00' ISSUED FOR UDES REVIEW 70. 01-22-18 15'00' ISSUED FOR UDES REVIEW 71. 01-22-18 15'00' ISSUED FOR UDES REVIEW 72. 01-22-18 15'00' ISSUED FOR UDES REVIEW 73. 01-22-18 15'00' ISSUED FOR UDES REVIEW 74. 01-22-18 15'00' ISSUED FOR UDES REVIEW 75. 01-22-18 15'00' ISSUED FOR UDES REVIEW 76. 01-22-18 15'00' ISSUED FOR UDES REVIEW 77. 01-22-18 15'00' ISSUED FOR UDES REVIEW 78. 01-22-18 15'00' ISSUED FOR UDES REVIEW 79. 01-22-18 15'00' ISSUED FOR UDES REVIEW 80. 01-22-18 15'00' ISSUED FOR UDES REVIEW 81. 01-22-18 15'00' ISSUED FOR UDES REVIEW 82. 01-22-18 15'00' ISSUED FOR UDES REVIEW 83. 01-22-18 15'00' ISSUED FOR UDES REVIEW 84. 01-22-18 15'00' ISSUED FOR UDES REVIEW 85. 01-22-18 15'00' ISSUED FOR UDES REVIEW 86. 01-22-18 15'00' ISSUED FOR UDES REVIEW 87. 01-22-18 15'00' ISSUED FOR UDES REVIEW 88. 01-22-18 15'00' ISSUED FOR UDES REVIEW 89. 01-22-18 15'00' ISSUED FOR UDES REVIEW 90. 01-22-18 15'00' ISSUED FOR UDES REVIEW 91. 01-22-18 15'00' ISSUED FOR UDES REVIEW 92. 01-22-18 15'00' ISSUED FOR UDES REVIEW 93. 01-22-18 15'00' ISSUED FOR UDES REVIEW 94. 01-22-18 15'00' ISSUED FOR UDES REVIEW 95. 01-22-18 15'00' ISSUED FOR UDES REVIEW 96. 01-22-18 15'00' ISSUED FOR UDES REVIEW 97. 01-22-18 15'00' ISSUED FOR UDES REVIEW 98. 01-22-18 15'00' ISSUED FOR UDES REVIEW 99. 01-22-18 15'00' ISSUED FOR UDES REVIEW 100. 01-22-18 15'00' ISSUED FOR UDES REVIEW 	

SEBAGO
 TECHNICAL
 WWW.SEBAGOTECHNICALS.COM
 75 John Roberts Rd.
 South Portland, ME 04106
 TEL: 207-260-2100

OVERALL SITE PLAN
 OF:
SACO FREIGHT TERMINAL
 INDUSTRIAL PARK ROAD
 SACO, MAINE
 FOR:
A. DUJE PYLE, INC.
 BROCKWAY-SMITH COMPANY
 305 UPTON DRIVE
 WILMINGTON, PA 19387