

THE PECK BUILDING

Lewiston | Maine

Professional / Medical / Legal Office Opportunity with Dedicated Structured Parking



PORTA
& CO.

The Peck Building offers a compelling owner-user opportunity in downtown Lewiston, Maine, with strong appeal to legal, medical, administrative, government, and institutional users.

Its proximity to the courthouse makes it especially attractive for law firms, legal service providers, and public-sector occupants seeking convenience and visibility. At this cost-basis, the property also presents a strong lease-versus-own case for owner-occupiers looking to control long-term occupancy costs while building equity.

PROPERTY HIGHLIGHTS

AVAILABILITY

- Two (2) professional office condominiums
 - Floors 2 & 3: 14,444 - 30,694± SF
 - Street & parking-level common entrances

STRUCTURED PARKING

- Large-scale dedicated 596 space structured parking integrated with direct building access
- Ability to accommodate high-density users

LOCATION

- Positioned in Lewiston's governmental, medical, and legal core
- Central Maine Health, County Superior and District Court, Government offices, and MCHP all within walking distance

FULL-SERVICE CAM

- CAM includes ALL utilities, condo fees, property management, R&M and insurance



PROPERTY DETAILS

OWNER OF RECORD	Aegean Development, LLC
PROPERTY ADDRESS	184 Main Street Lewiston, ME 04240
REGISTRY OF DEEDS	Book 10075 / Page 161
ASSESSORS REFERENCE	Map 207 / Lot 21
BUILDING SIZE	67,392± SF
LAND AREA	1.72± Acres
AVAILABLE SPACE	2nd Floor- 16,250± SF - \$1,050,000 \$905,000 3rd Floor- 14,444± SF - \$800,000 \$700,000 Total- 31,069± SF
BUILDING TENANTS	1st Floor- FedCap Rehabilitation Services 4th Floor- Androscoggin District Attorneys Office
ELEVATOR(S)	Three (3)
PARKING	596 structures parking spaces with direct access
NUMBER OF STORIES	Four (4) plus full basement
AMENITIES	On-site gym w/ Locker rooms, full size standby generator, 800 drops of CAT 6 wiring, secure 24/7 HID access, water & downtown views
YEAR BUILT	1893
HVAC	Natural Gas, Central A/C
UTILITIES	Municipal water and sewer
PROPERTY TAXES	2 nd Floor - \$32,200/annually (approx.) 3 rd Floor - \$27,800/annually (approx.)
Est. CAM EXPENSES	\$6.25/SF CAM (2026 budget)
LEASE RATE	\$8.00/SF NNN
SALE PRICE	2nd Floor - \$1,050,000 3rd Floor- \$800,000



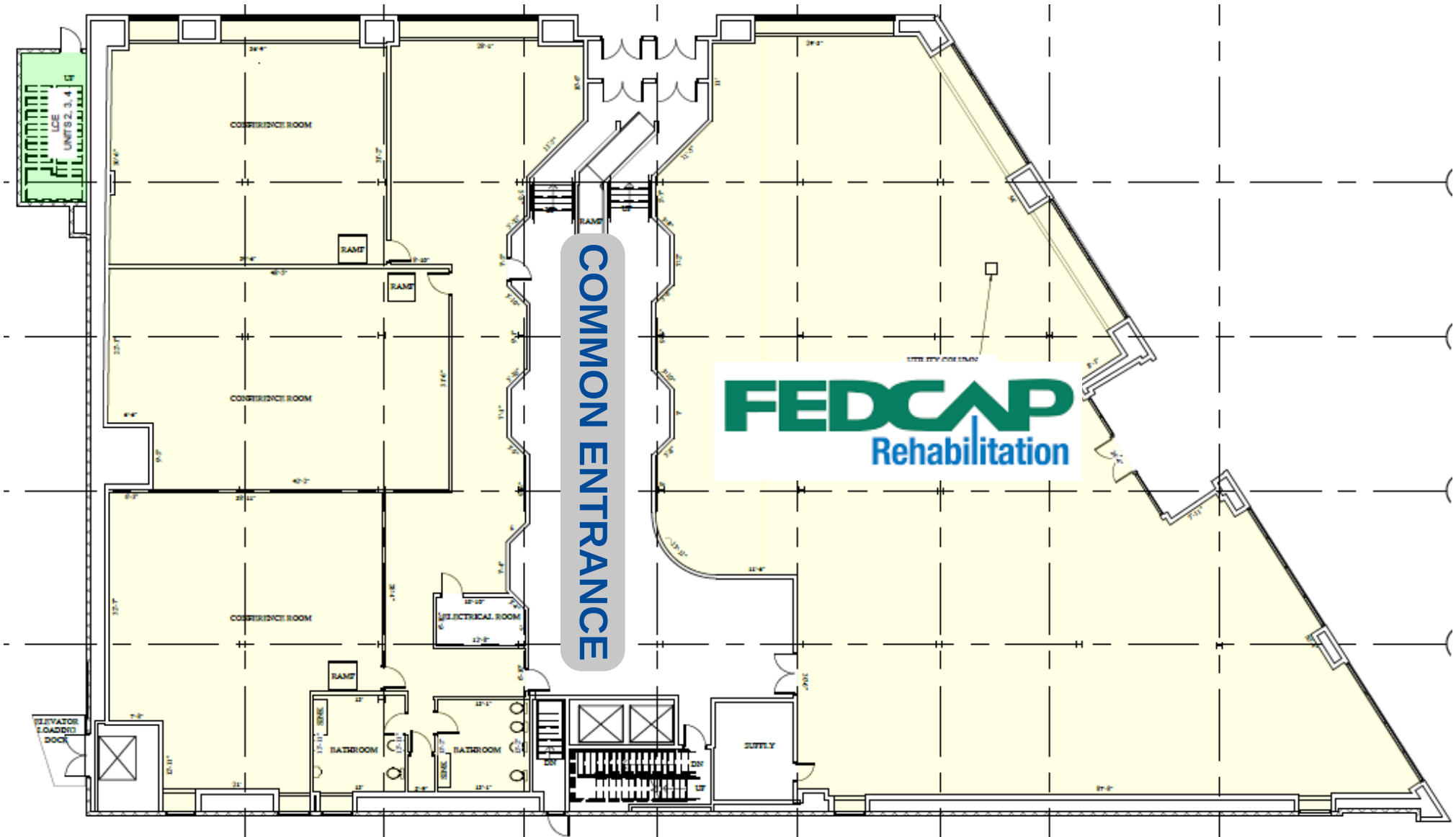
INTERIOR PHOTOS



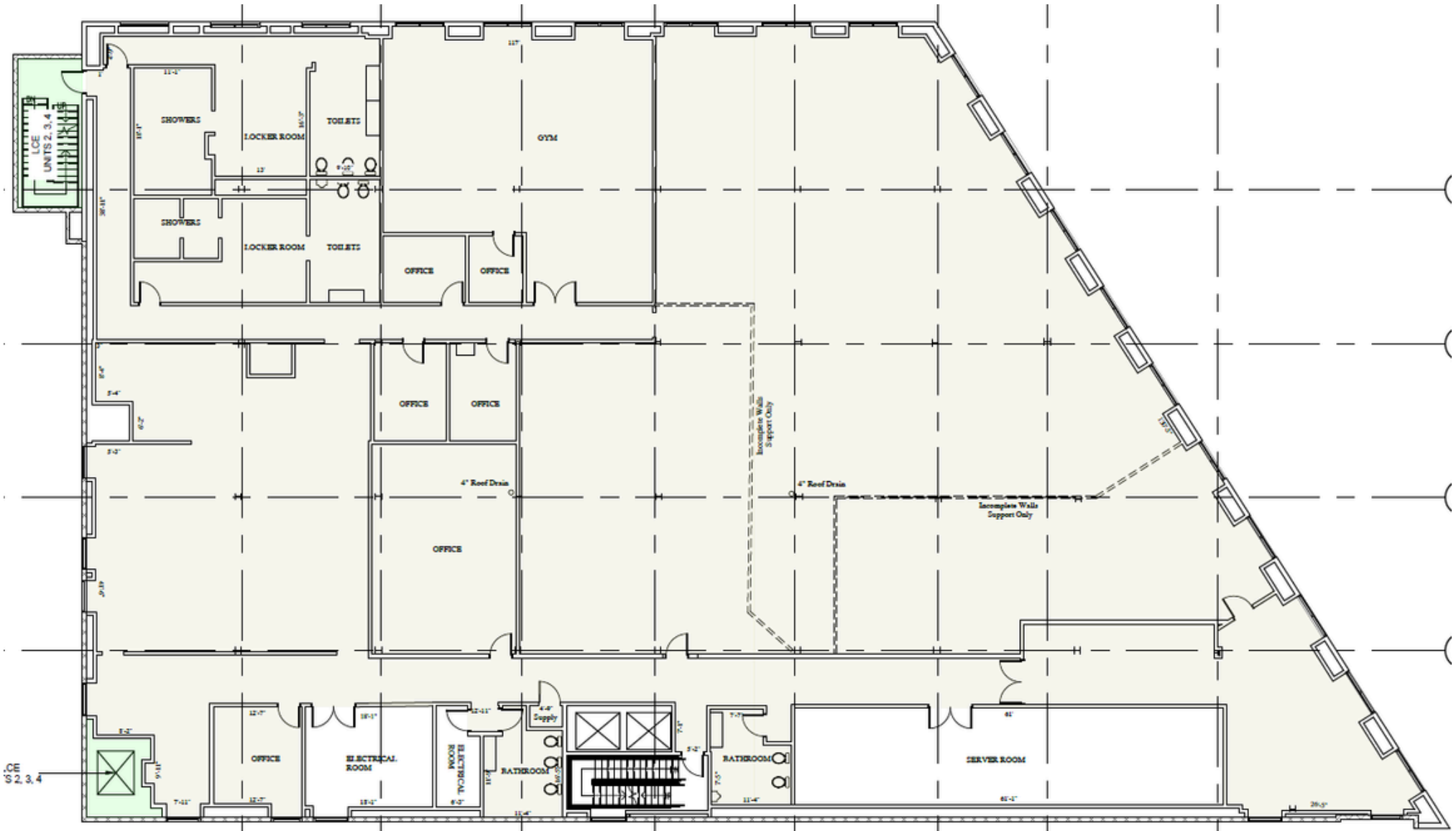




1st Floor



3rd Floor



AERIAL OVERVIEW

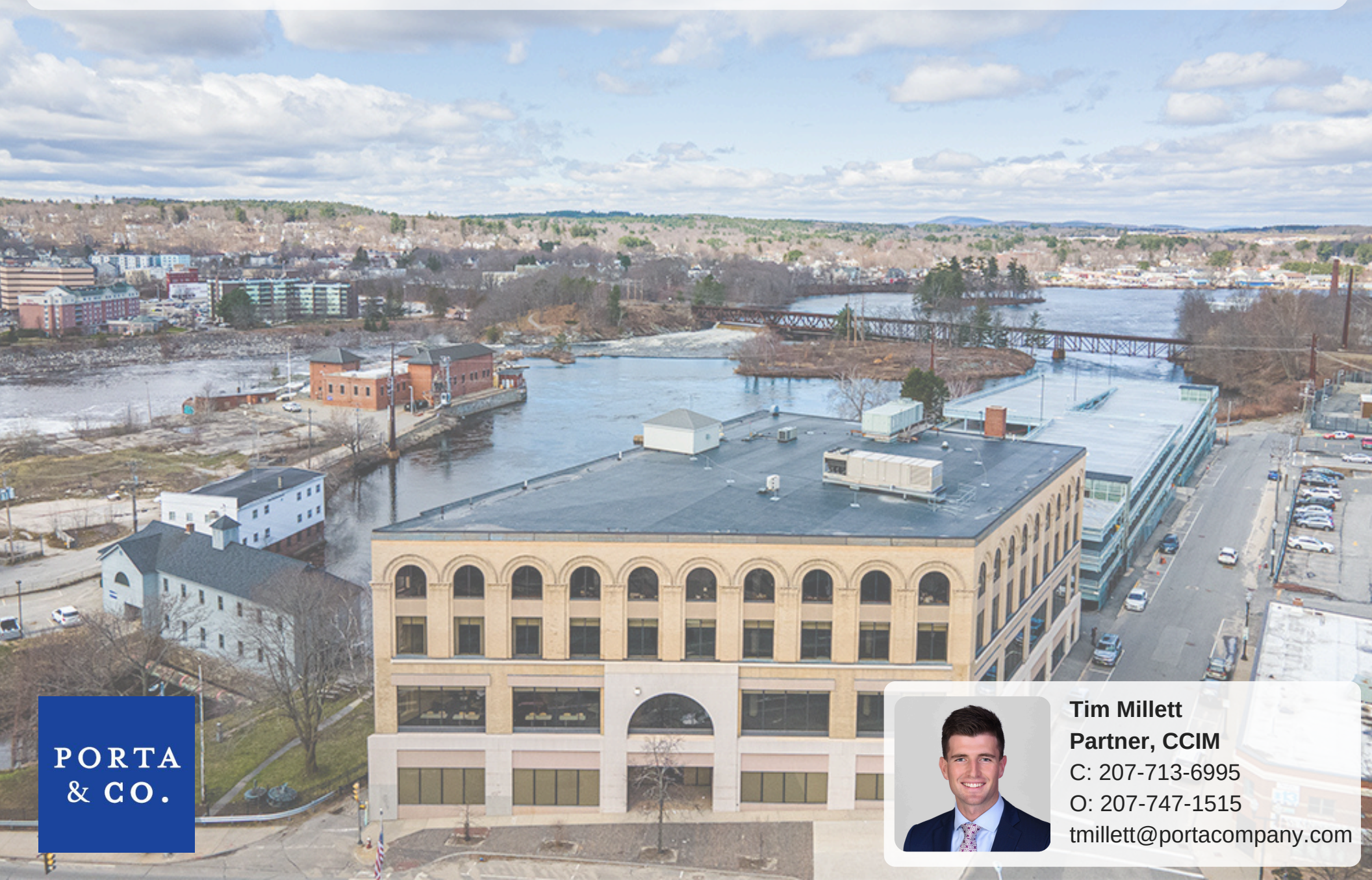


150-unit Luxury
Apartment
Building

County Superior
& District Court



THIS INFORMATION HAS BEEN OBTAINED FROM SOURCES BELIEVED RELIABLE AND IS INTENDED FOR INFORMATIONAL USE ONLY. THE INFORMATION CONTAINED HEREIN HAS NOT BEEN VERIFIED FOR ACCURACY OR COMPLETENESS. IT IS RECOMMENDED THAT PROSPECTIVE BUYERS CONDUCT THEIR OWN INSPECTION OF THE PROPERTY AND VERIFY ALL INFORMATION. ANY RELIANCE ON THIS INFORMATION IS SOLELY AT YOUR OWN RISK. PHOTOS HEREIN ARE THE PROPERTY OF THEIR RESPECTIVE OWNERS. USE OF THESE IMAGES WITHOUT THE EXPRESS WRITTEN CONSENT OF THE OWNER IS PROHIBITED. ALL DOCUMENTATION AND INFORMATION CONTAINED HEREIN REMAINS THE PROPERTY OF PORTA & CO AND SHALL BE KEPT CONFIDENTIAL. REPRODUCTION OF ANY PART OF THIS DOCUMENT IS AUTHORIZED ONLY TO THE EXTENT NECESSARY FOR ITS EVALUATION. ALL RIGHTS RESERVED.



**PORTA
& CO.**



Tim Millett

Partner, CCIM

C: 207-713-6995

O: 207-747-1515

tmillett@portacompany.com