

# FOR SUBLEASE • OFFICE SPACE

1 Dana Street, Suite 2 • Portland, ME



## 2,300± SF OFFICE SPACE

- Join Blanche + Mimi, and Archipelago
- Located on busy Commercial Street with great views of the waterfront
- Level 2 space with 3 offices, open work area, and 2 private bathrooms

**LEASE RATE: \$24.00/SF MG**



**Cheri Bonawitz**  
O 207.773.2554  
C 207.233.8000  
Cheri@malonecb.com



# PROPERTY SUMMARY

1 Dana Street, Suite 2 • Portland, ME



## Site Info

OWNER:	Sol-003 LLC
MANAGEMENT:	East Brown Cow
DEED:	Book 27099, Page 043
ASSESSOR:	Map 32, Block U, Lot 4
LOT SIZE:	0.06± AC
SIGNAGE:	Building directory in lobby
PARKING:	Spaces available for lease at Old Port Square Garage
ZONING:	B-3 (Downtown Business)



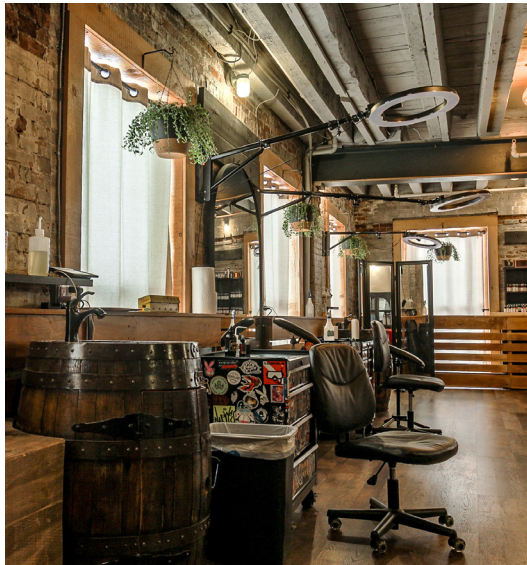
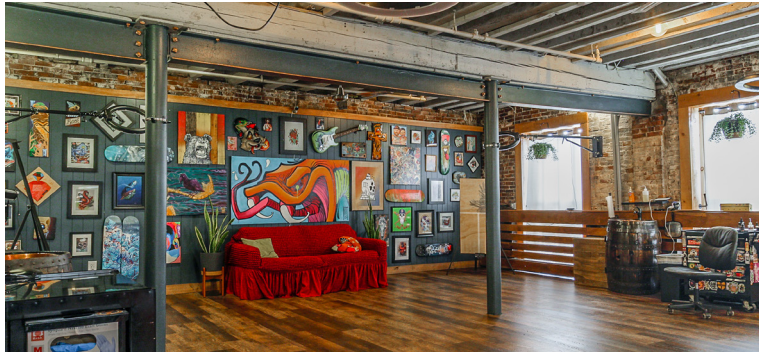
## Building Info

BUILDING SIZE:	10,975± RSF
AVAILABLE SPACE:	Suite 2 - 2,300± SF
YEAR BUILT:	1853
CONSTRUCTION:	Masonry & wood
ROOF:	Flat
FLOORING:	Vinyl & carpet mix
CEILING HEIGHT:	12'±
ELECTRICITY:	Individually metered, 200 amp
HVAC:	Electric central heating & A/C
UTILITIES:	Municipal water/sewer
RESTROOM:	Two (2) private
SPRINKLER:	Wet system
ELEVATOR:	Yes



# PHOTOS

1 Dana Street, Suite 2 • Portland, ME



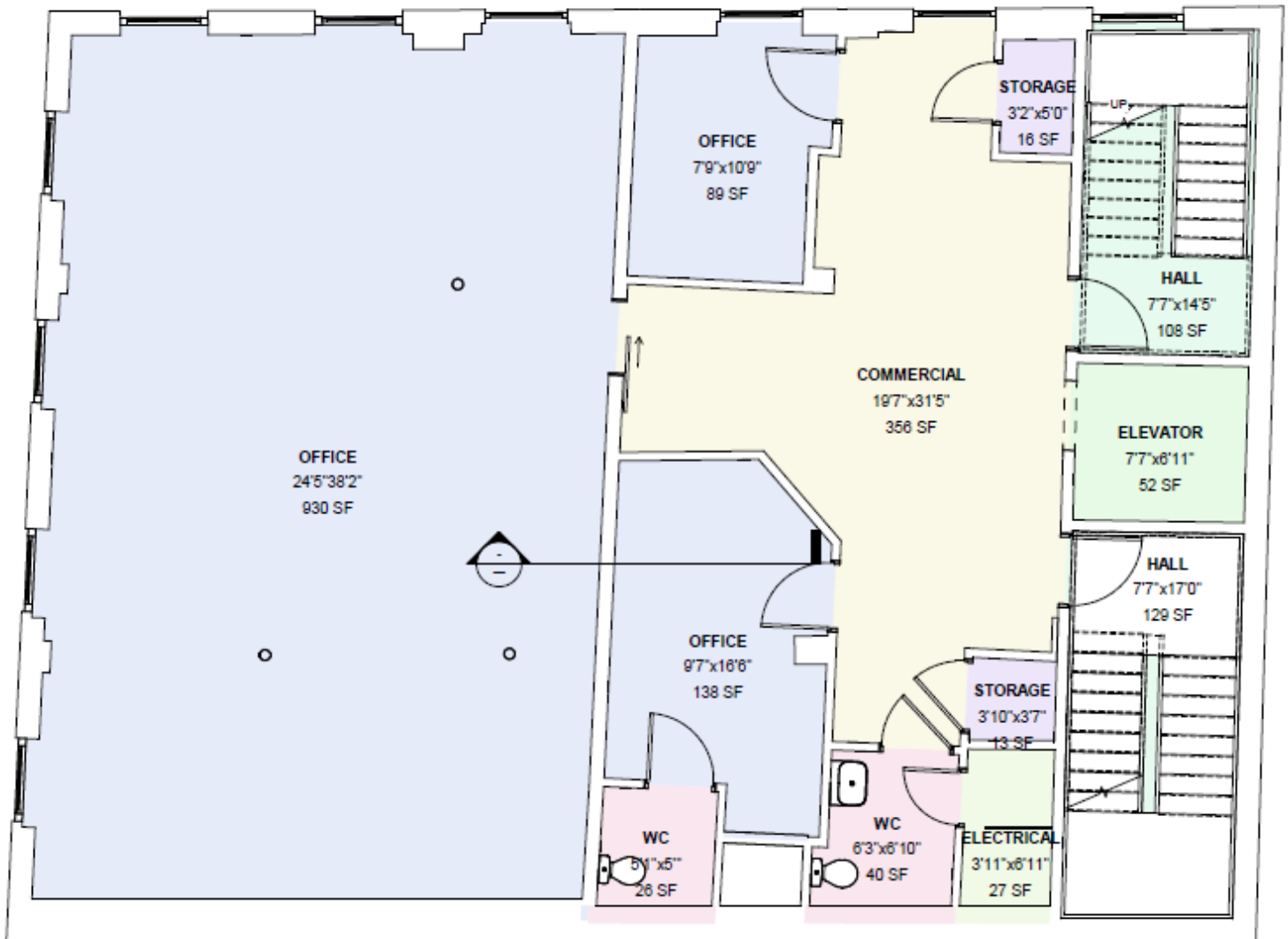
# PHOTOS

1 Dana Street, Suite 2 • Portland, ME



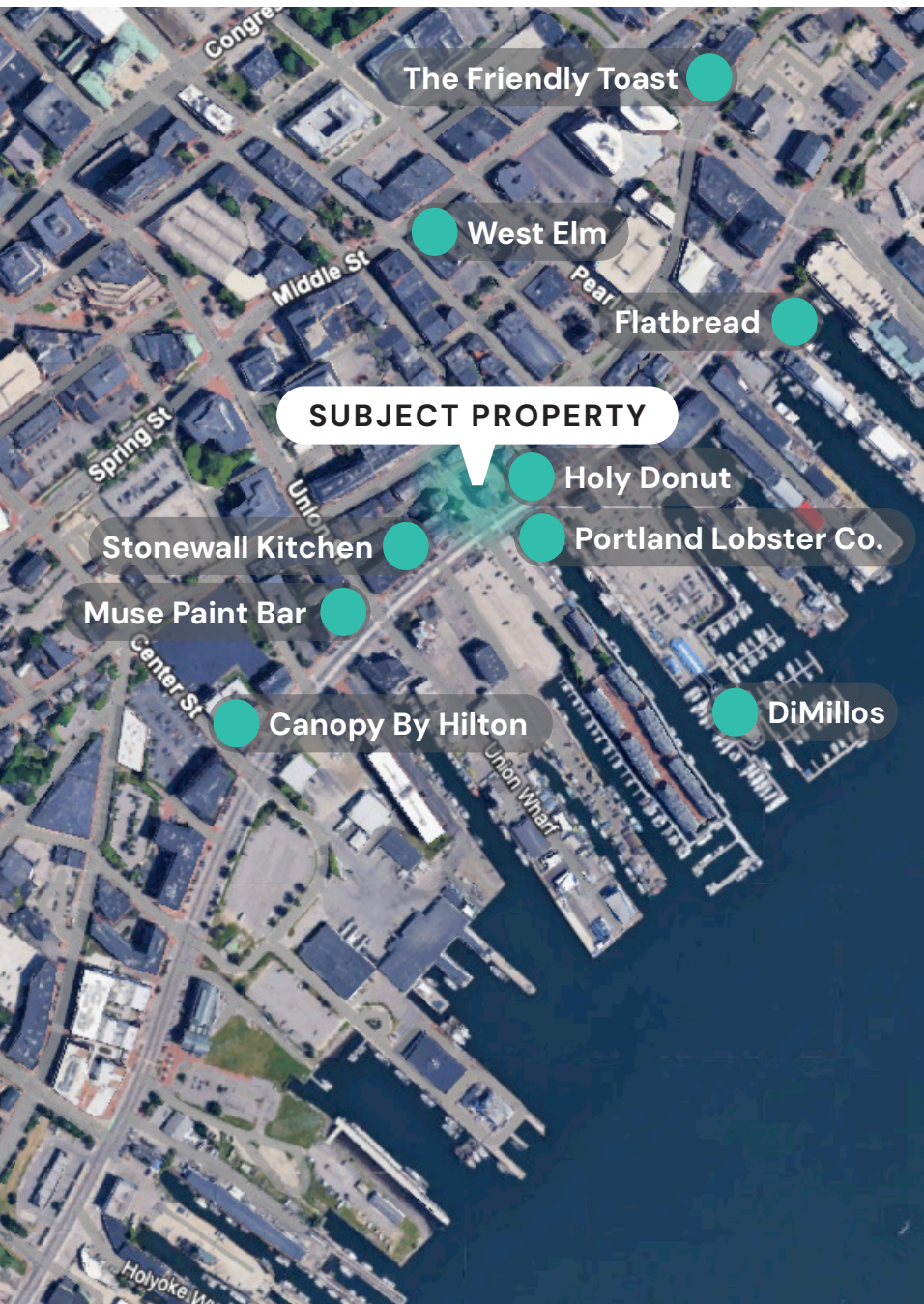
# FLOOR PLAN

1 Dana Street, Suite 2 • Portland, ME



# LOCATION MAP

1 Dana Street, Suite 2 • Portland, ME



## NEARBY

## STAY



## DINE



## SHOP

west elm



This document has been prepared by Malone Commercial Brokers for advertising and general information only. Malone Commercial Brokers makes no guarantees, representations or warranties of any kind, expressed or implied, regarding, but not limited to, warranties of content, accuracy, and reliability. Any interested party should undertake their own inquiries as to the accuracy of the information. Malone Commercial Brokers excludes unequivocally all informed or implied terms, conditions and warranties arising out of this document and excludes all liability for loss and damages there from. All data is subject to change of price, error, omissions, other conditions or withdrawal without notice. Malone Commercial Brokers is acting as the Seller's/Lessor's agent in the marketing of this property.