



Brady Sullivan Properties  
 670 N. Commercial Street  
 Manchester, nh 03101  
 603.622.6223



Owner  
**BRADY SULLIVAN PROPERTIES**  
 MANCHESTER NH

Project  
 1750 Elm Street  
 MANCHESTER NH

**SUITE 104**  
 4,685 RSF

Seals

| Issues |             |
|--------|-------------|
| Date   | Description |
|        |             |
|        |             |
|        |             |
|        |             |
|        |             |

| Revisions |      |             |
|-----------|------|-------------|
| No.       | Date | Description |
|           |      |             |
|           |      |             |
|           |      |             |
|           |      |             |
|           |      |             |

Drawing Title

|                       |                     |
|-----------------------|---------------------|
| Issue Date:           | 9-19-2019           |
| Project No:           | Scale: As indicated |
| Project Manager:      | Production Leader:  |
| Project Architect: CL | Peer Reviewer: CL   |

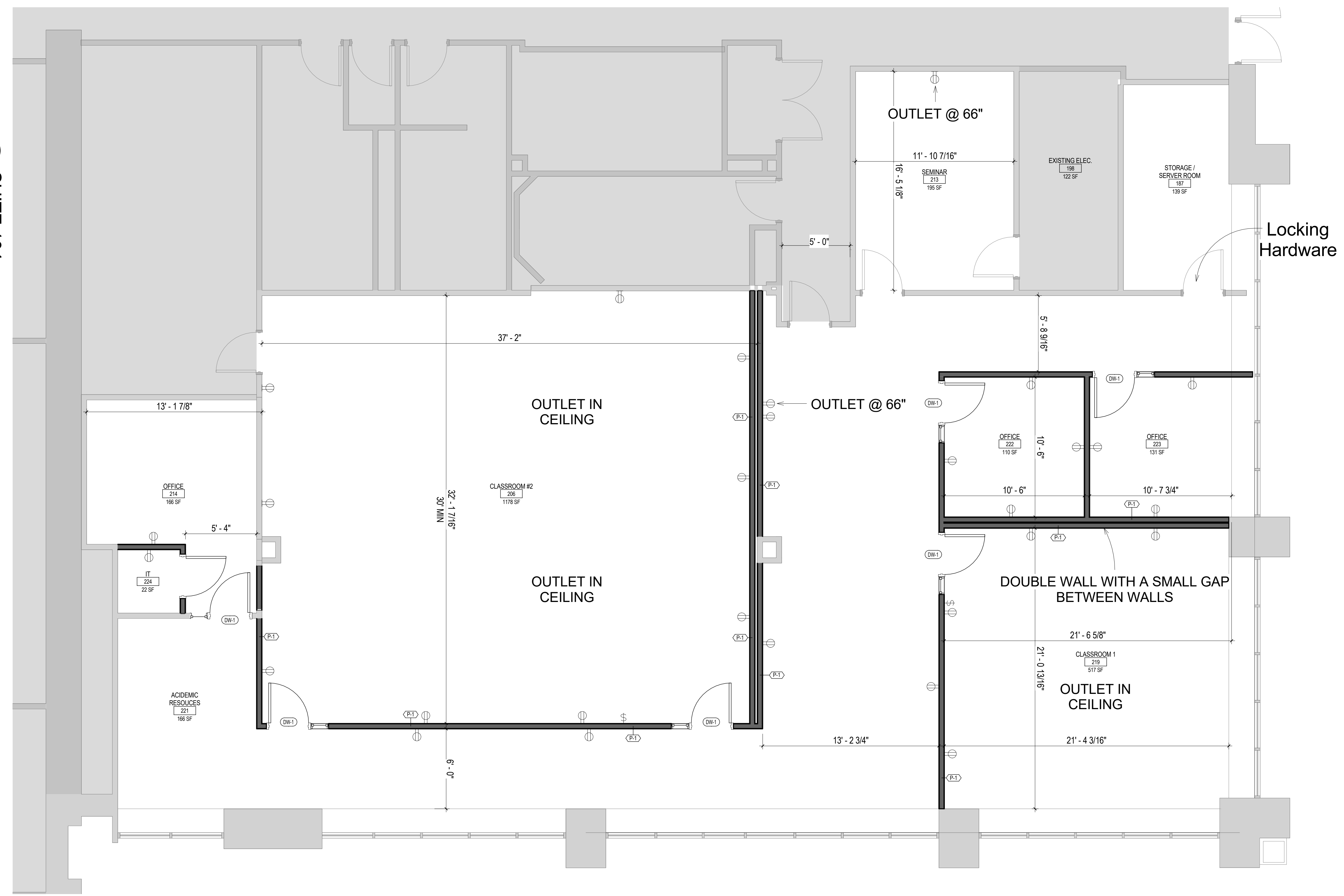
Drawing Number

**A1-2**

**LEGEND**

|  |                                   |  |                             |
|--|-----------------------------------|--|-----------------------------|
|  | NOT IN SCOPE                      |  | PROPOSED WALL - FULL HEIGHT |
|  | EXISTING ITEMS                    |  | PROPOSED WALL - 8' HIGH     |
|  | NEW DOOR AND FRAME                |  | PROPOSED WALL - 42" HIGH    |
|  | EXISTING DOOR AND FRAME TO REMAIN |  | DEMO                        |

1 SUITE 104  
 1/4" = 1'-0"



9/19/2019 2:36:06 PM