



Brady Sullivan Properties  
 670 N. Commercial Street  
 Manchester, nh 03101  
 603.622.6223



Owner

Project  
 380-510 John Fitch Hwy

FITCHBURG MA

**SUITE A-150  
 EXISTING PLAN  
 4,100 SF**

Seals

Issues	
Date	Description

Revisions	
No.	Date

Drawing Title

Issue Date: 1-2-2025

Project No: Scale: As Indicated

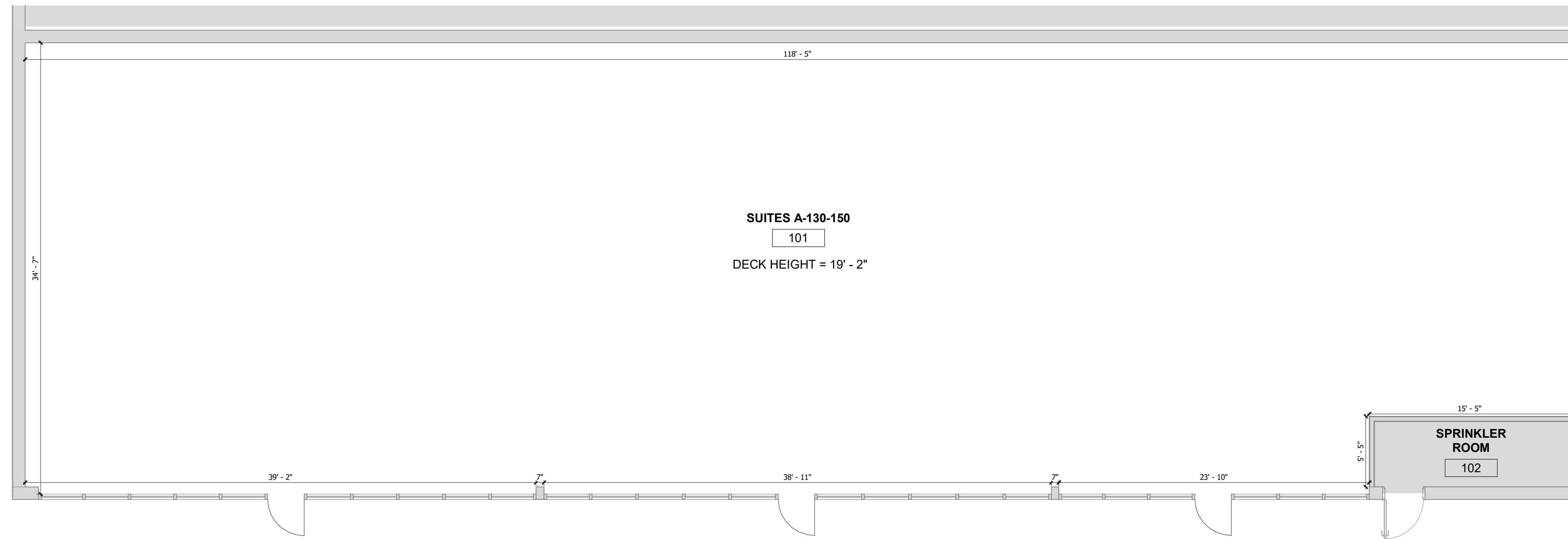
Project Manager: Production Leader:

Project Architect: Peer Reviewer:

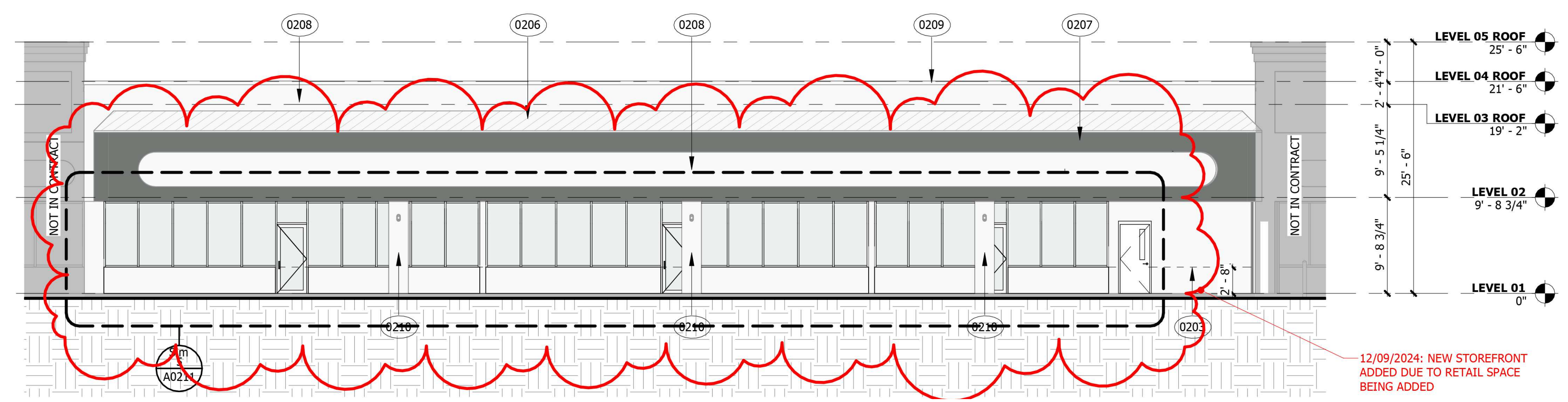
Drawing Number

**A101**

LEGEND			
	NOT IN SCOPE		PROPOSED ITEMS (HEAVY LINE WEIGHT)
	EXISTING ITEMS		EXISTING DOOR AND FRAME TO REMAIN
	NEW DOOR AND FRAME		DEMO ITEMS
	NEW DUPLEX RECEPTACLE		FIRE ALARM STROBE
	EMERGENCY BACKUP UNIT		FIRE ALARM PULL STATION
	EXIT SIGN		



**1 EXISTING PLAN SUITES A-130-150**  
 3/16\"/>



**2 EXISTING ELEVATION SUITES A-130-150**  
 3/16\"/>

1/2/2025 9:07:31 AM