



**PRIME RETAIL  
FOR LEASE  
AT HERITAGE  
COMMONS**

**FOR LEASE**

**2800 LAFAYETTE ROAD, UNIT 10A,  
PORTSMOUTH, NH**

**\$22.00 SF/YR NNN**

# PROPERTY INFORMATION



**LEASE RATE: \$22.00 SF/YR NNN**

**2800 Lafayette Road, Unit 10A, Portsmouth, NH 03801**

**1,950+/- SF Available**

## DESCRIPTION:

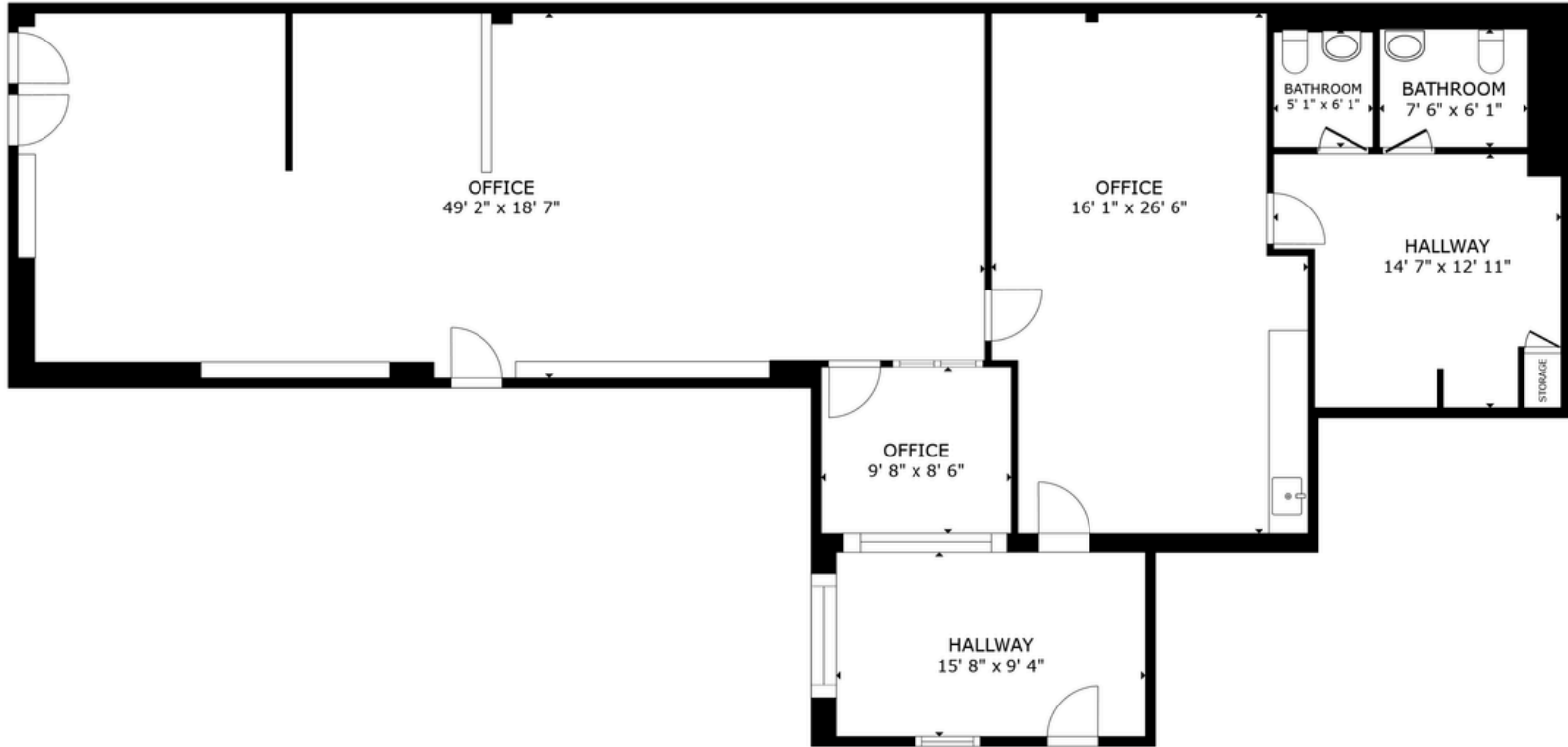
Discover a prime retail opportunity at Heritage Commons, a well-established neighborhood shopping center in the heart of Portsmouth, New Hampshire.

This 1,950 SF end-cap unit offers excellent visibility, strong traffic counts, and convenient access from major commuter routes, making it ideal for retail, service, or specialty users seeking a prominent Seacoast location.

## PROPERTY FEATURES:

- End-Cap Unit
- 1,950+/- SF
- High Traffic Count
- Convenient Access

# FLOOR PLAN



**TAKE A VIRTUAL TOUR!**

# PHOTOS



# PHOTOS



# PHOTOS



# DEMOGRAPHICS



## 2025 SUMMARY

2025 SUMMARY	1 MILE	5 MILE	10 MILE
Population	2,727	42,227	118,549
Households	1,458	19,409	53,167
Families	698	11,026	31,821
Avg HH Size	1.87	2.13	2.19
Median Age	42.2	46.9	47.9
Median HH Income	\$88,097	\$118,312	\$113,486
Avg HH Income	\$121,391	\$161,915	\$150,862

### BUSINESSES (10 MILE)



**8,825**

TOTAL BUSINESSES



**100,586**

TOTAL EMPLOYEES

### INCOME (10 MILE)



**\$113,486**

MEDIAN HH INCOME



**\$67,599**

PER CAPITA INCOME



**\$512,612**

MEDIAN NET WORTH

# CONFIDENTIALITY & DISCLAIMER

THIS OFFERING IS SUBJECT TO THE FOLLOWING ASSUMPTIONS AND LIMITING CONDITIONS:

NAI Norwood Group assumes no responsibility for matter legal in character, nor do we render any opinion as to the title which is assumed to be good.

We believe the information furnished to us by the owners and others is reliable, but we assume no responsibility for its accuracy.

Buyers should not rely on this information, and Buyers should make their own investigation of any and all aspects.

---

**PRESENTED BY:**

---

**KATIE FLEISHER**

**ADVISOR**

tel (603) 637-2003  
mobile (603) 205-7399  
kfleisher@nainorwoodgroup.com

**ANDREW FLEISHER, CCIM**

**SENIOR ADVISOR**

tel (603) 637-2001  
mobile (603) 498-2817  
andy@nainorwoodgroup.com



Commercial Real Estate Services, Worldwide

**NAI Norwood Group**  
116 South River Road  
Bedford, NH 03110  
[www.nainorwoodgroup.com](http://www.nainorwoodgroup.com)