

Retail Space Available

1,606 SF and 2,400 SF Available

Great Road Shopping Center
297 Great Road
Bedford, Massachusetts



Features

- + Strong grocery-anchored center located close to Interstate 95
- + 23,500 cars per day on Great Road
- + 870,000 SF of life science on nearby Hartwell Avenue
- + 1,606 SF and 2,400 SF available
- + Daytime population of ~70,000 people with strong average incomes exceeding \$230,000

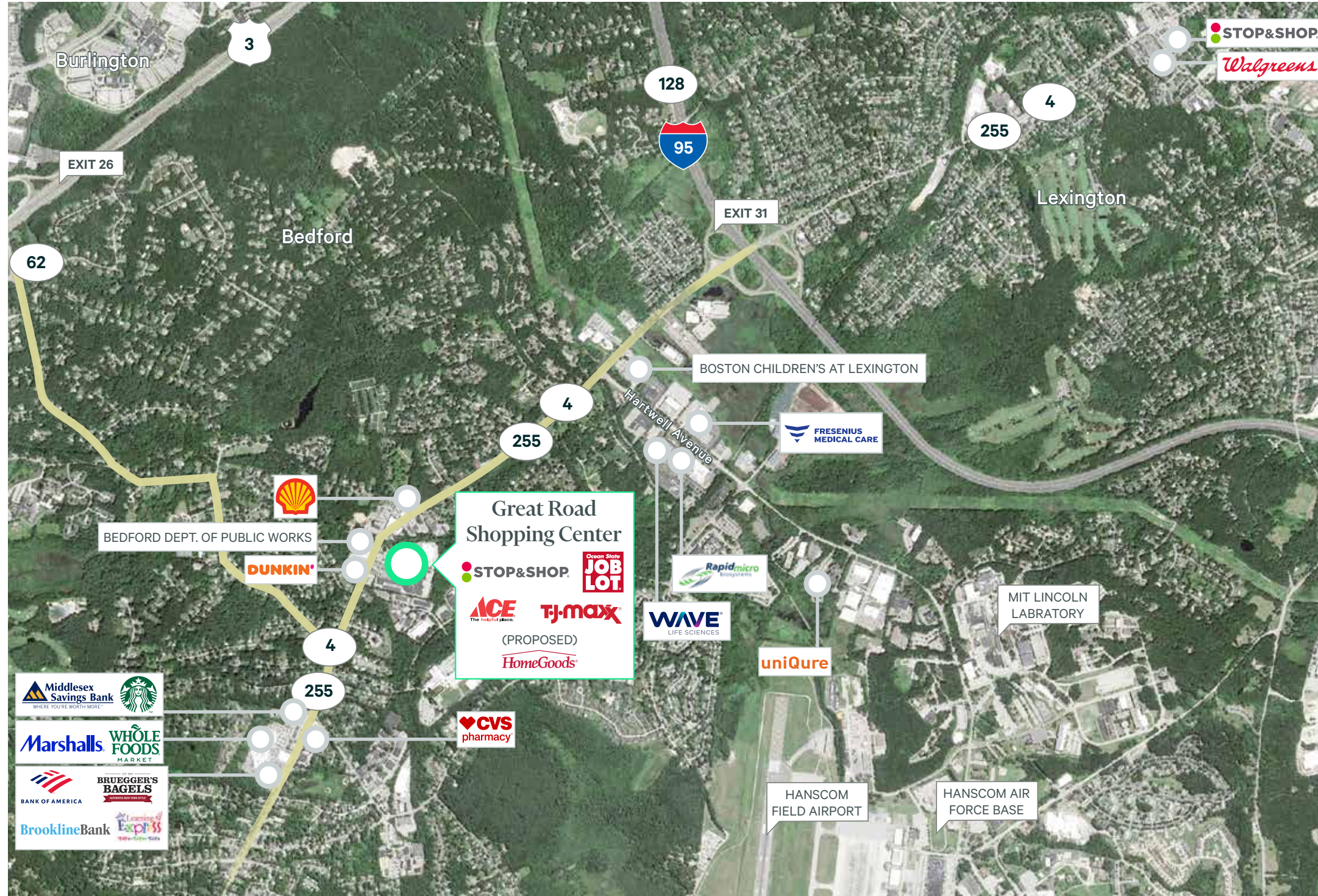
Retail Space Available

Great Road Shopping Center | 297 Great Road | Bedford, Massachusetts

For Lease

Retail Market

Great Road Shopping Center

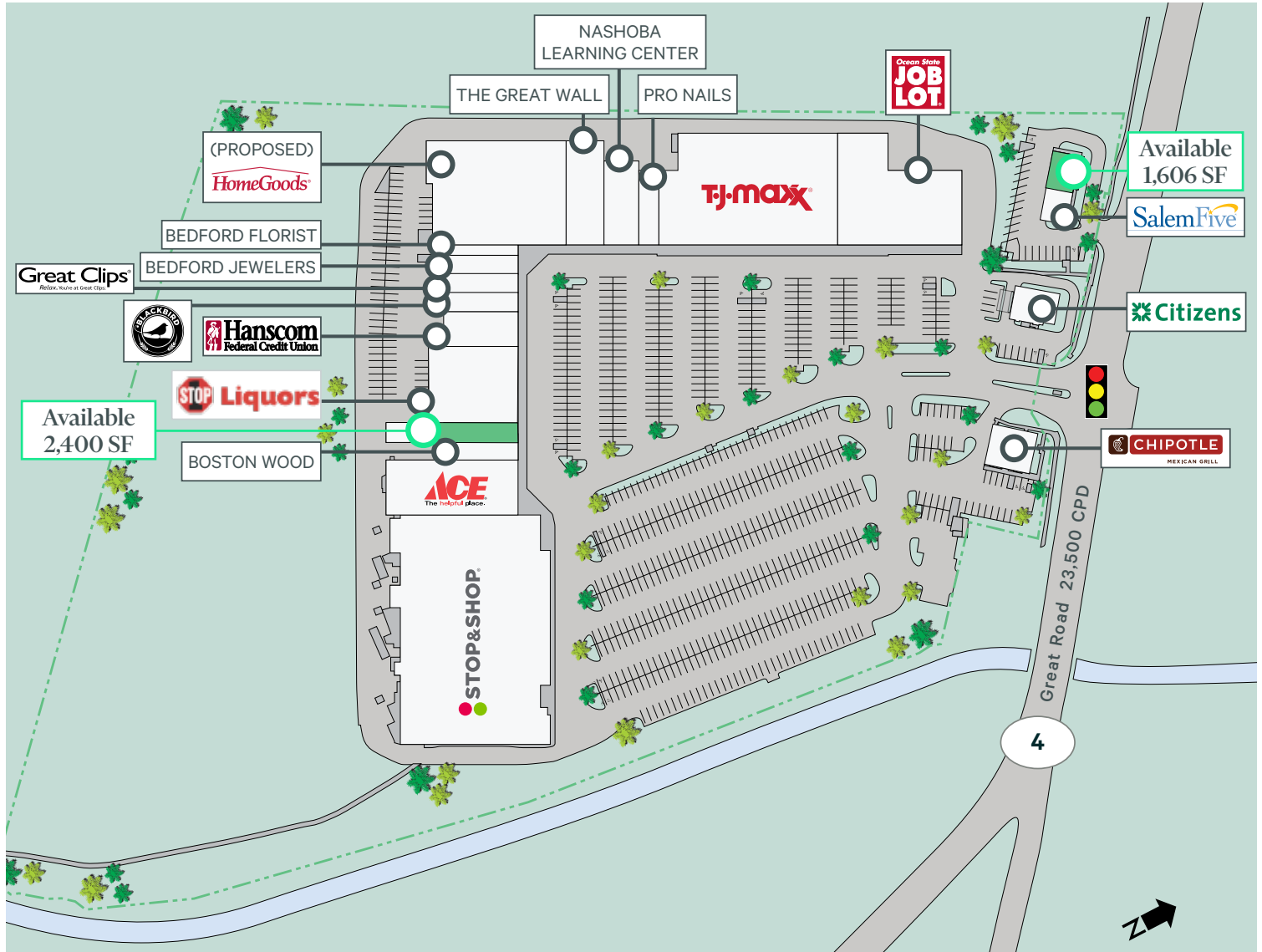


2025 Demographics	1 Mile	3 Miles	5 Miles	7 Miles
Estimated Population	4,799	36,233	113,185	256,338
Estimated Households	1,805	12,800	40,883	95,307
Estimated Average Household Income	\$223,353	\$252,695	\$236,340	\$226,582
Estimated Daytime Population	7,057	65,356	159,606	329,962

Retail Space Available

Great Road Shopping Center | 297 Great Road | Bedford, Massachusetts

For Lease



Contact Us

Rob Robledo

Executive Vice President
+1 617 912 6869
rob.robledo@cbre.com

John Ferris

Senior Vice President
+1 617 912 6871
john.ferris@cbre.com

Michael Nolan

Associate
+1 617 774 8344
michael.nolan@cbre.com

© 2026 CBRE, Inc. All rights reserved. This information has been obtained from sources believed reliable, but has not been verified for accuracy or completeness. You should conduct a careful, independent investigation of the property and verify all information. Any reliance on this information is solely at your own risk. CBRE and the CBRE logo are service marks of CBRE, Inc. All other marks displayed on this document are the property of their respective owners, and the use of such logos does not imply any affiliation with or endorsement of CBRE. Photos herein are the property of their respective owners. Use of these images without the express written consent of the owner is prohibited.