

**PORTA  
& CO.**

# Downtown Portland Office Space For Lease

30 Danforth Street | Portland, ME



## Property Highlights

- Available office suites range from 2,350 - 8,569± SF
- Professionally managed property
- Exposed brick and beam finishes
- Reserved Parking available in adjacent surface lot at Market Rates
- Fitness Facility available to all Tenants
- Centrally located in Portland's Old Port
- Lease Rate: \$16.00 - \$19.00/SF MG



**PORTA & CO.**  
COMMERCIAL REAL ESTATE

30 Milk Street, Second Floor  
Portland, ME 04101  
207-747-1515  
[www.portacompany.com](http://www.portacompany.com)

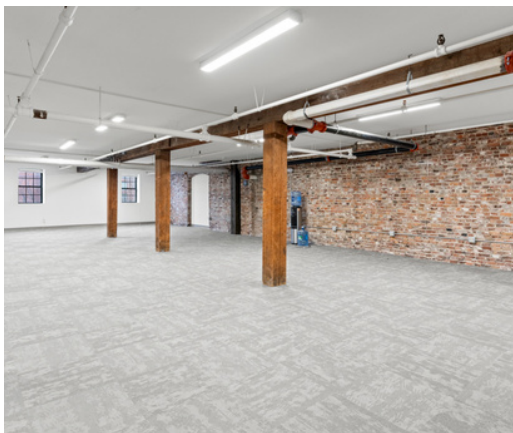
<b>LANDLORD</b>	J.B. BROWN & SONS
<b>AVAILABLE SPACES</b>	<p>SUITE 207: 3,154± SF   \$16.00/SF          SUITE 209: 2,744± SF   \$16.00/SF          SUITE 305: 2,350± SF*   \$19.00/SF          SUITE 306: 3,787± SF*   \$19.00/SF          SUITE 307: 2,432± SF*   \$19.00/SF  <i>*can be combined for a total of 6,219 - 8,569± SF</i></p>
<b>PARKING</b>	AVAILABLE IN SURFACE LOT AT MARKET RATES
<b>HVAC</b>	NATURAL GAS FIRED, CENTRAL HVAC
<b>UTILITIES</b>	SEPARATELY METERED
<b>ELEVATORS</b>	YES - ONE (1)
<b>RESTROOMS</b>	IN COMMON ON EACH FLOOR
<b>LEASE RATE</b>	\$16.00 - \$19.00/SF MODIFIED GROSS



PORTA  
& CO.

# PHOTOS

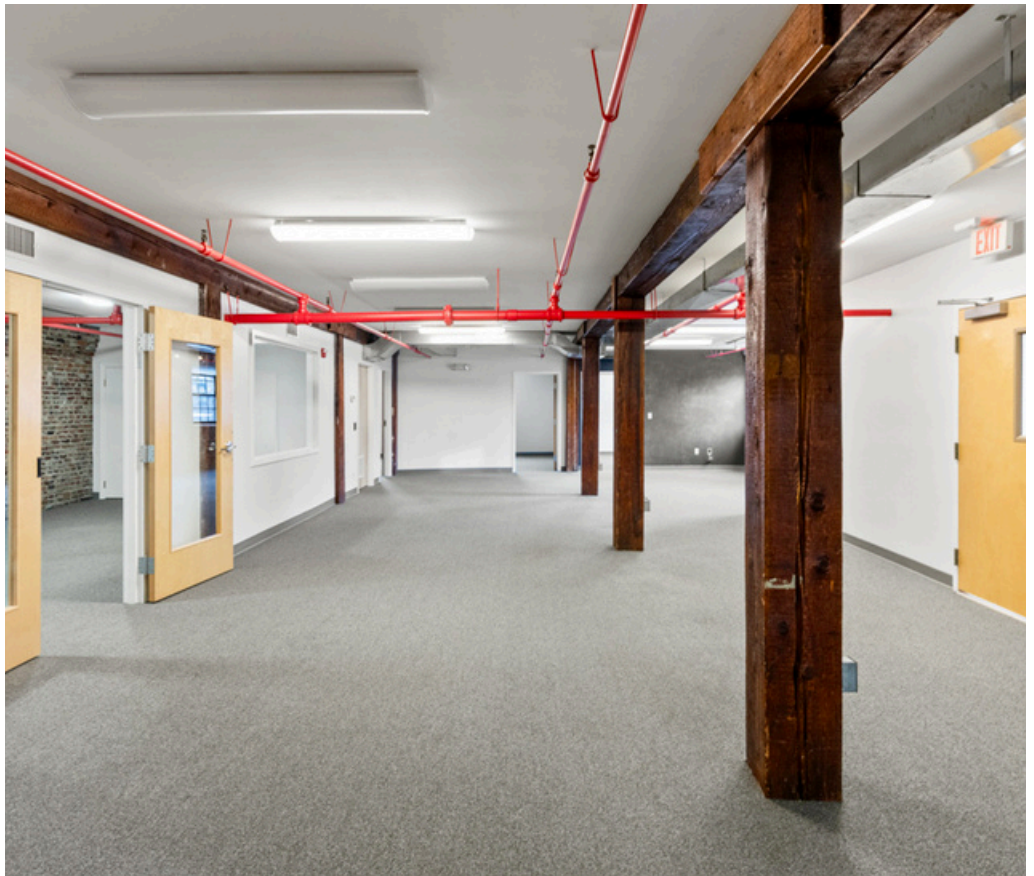
30 Danforth Street | Portland, ME



PORTA  
& CO.

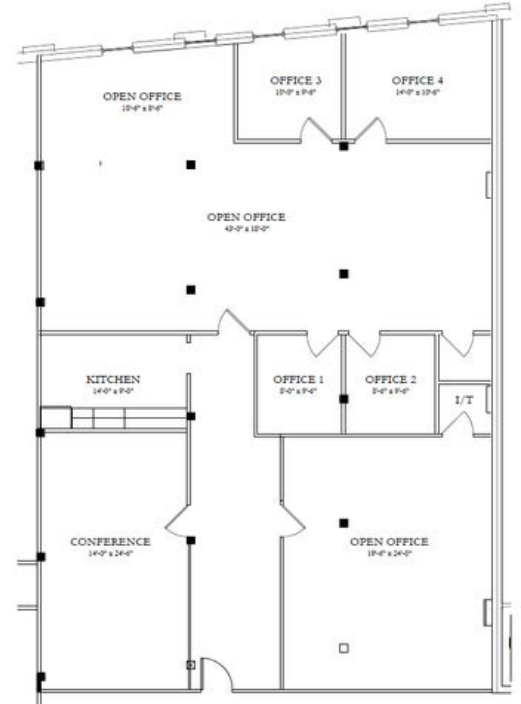
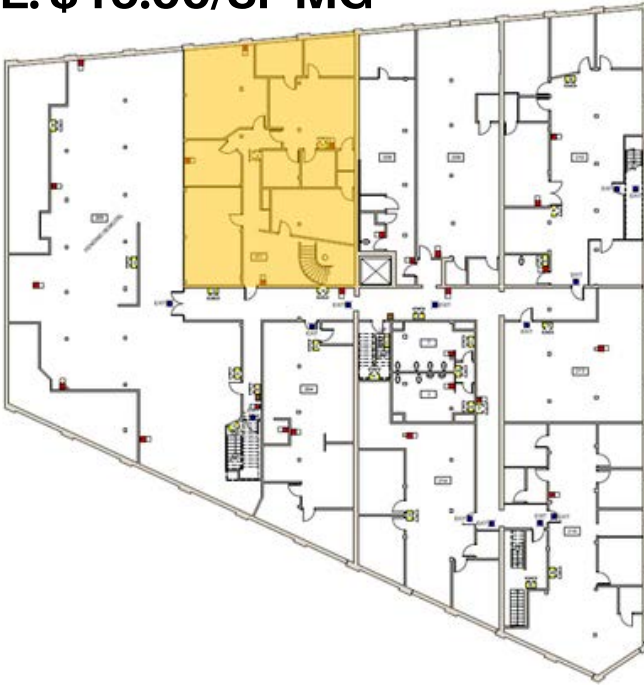
# PHOTOS

30 Danforth Street | Portland, ME



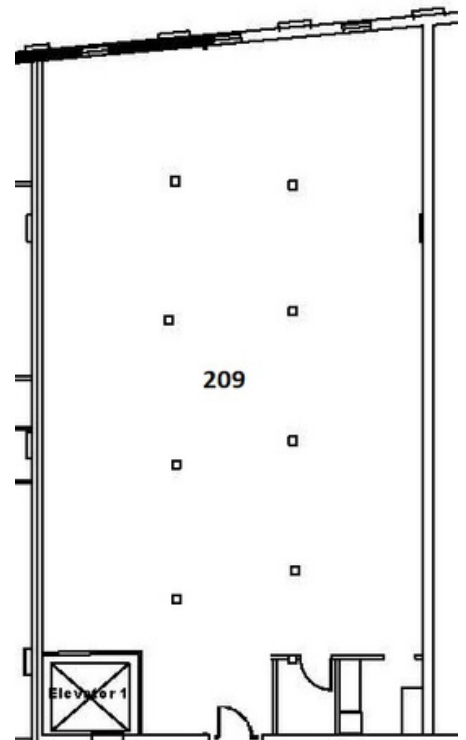
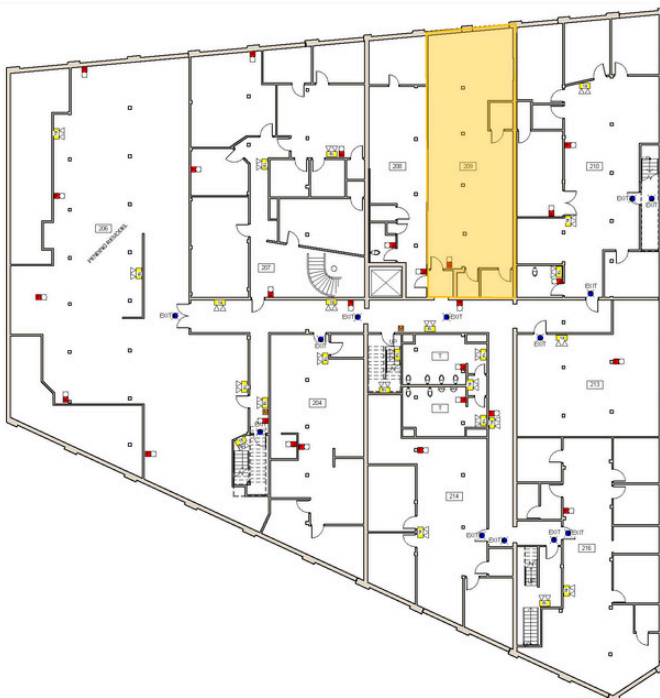
**SUITE 207: 3,154± SF**

**RATE: \$16.00/SF MG**



**SUITE 209: 2,744± SF**

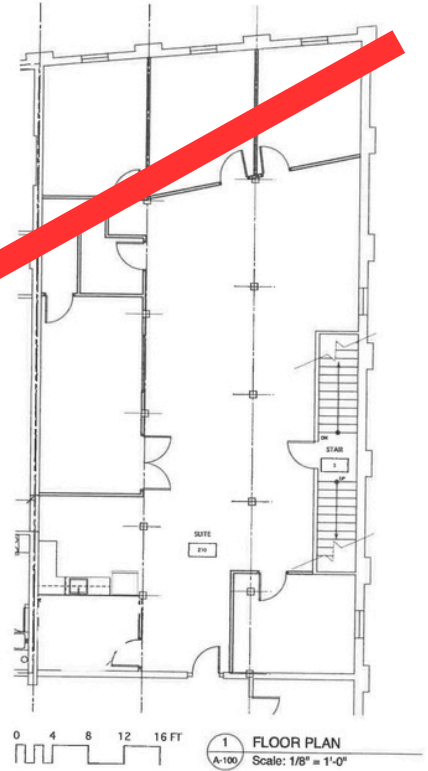
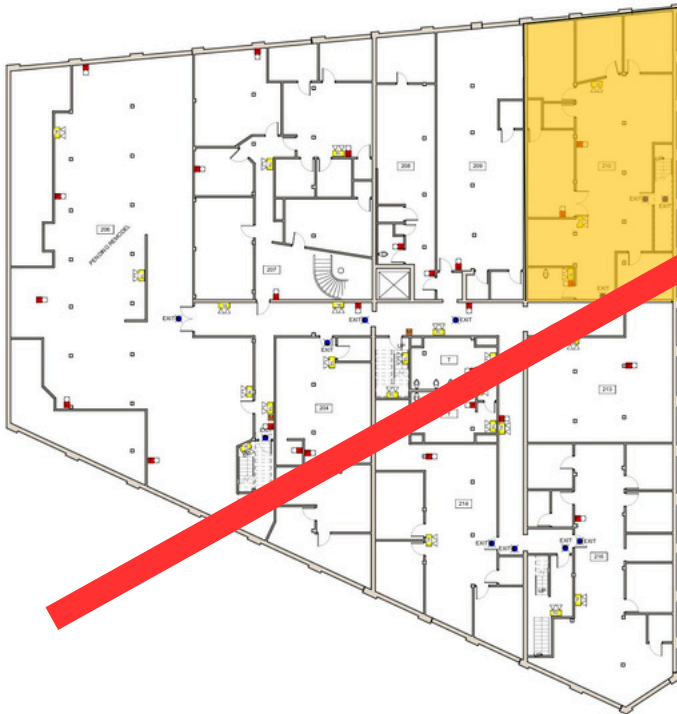
**RATE: \$16.00/SF MG**



**SUITE 210: 2,750± SF**

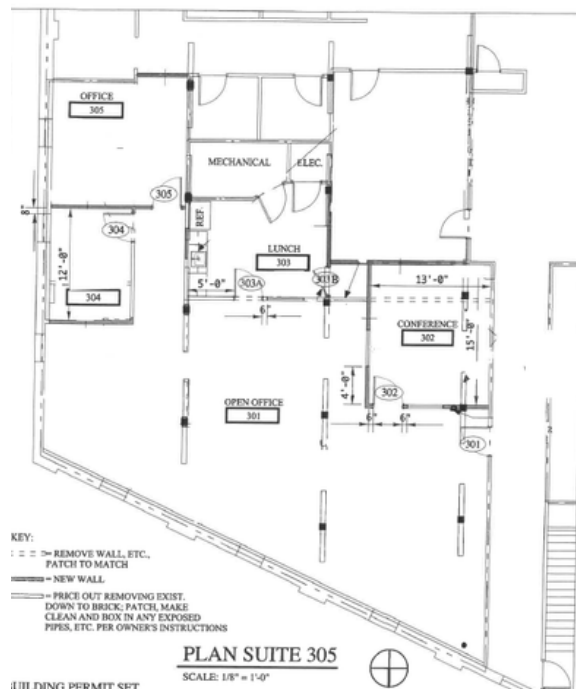
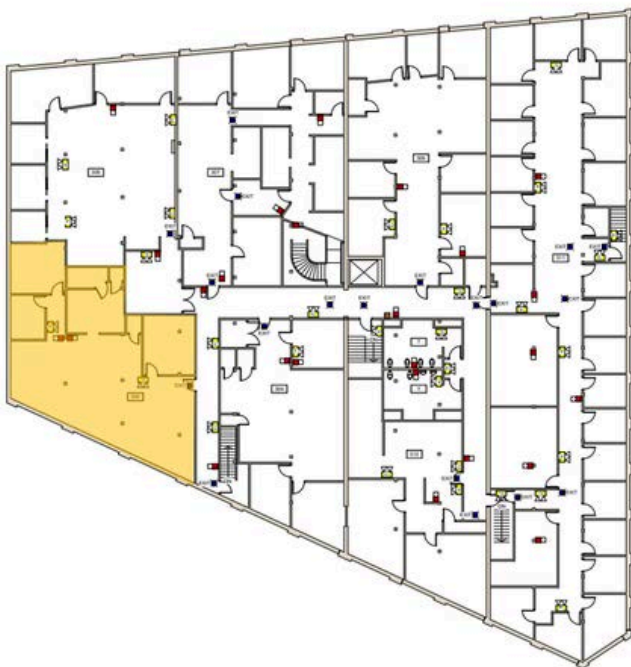
**RATE: \$18.00/SF**

**LEASED**



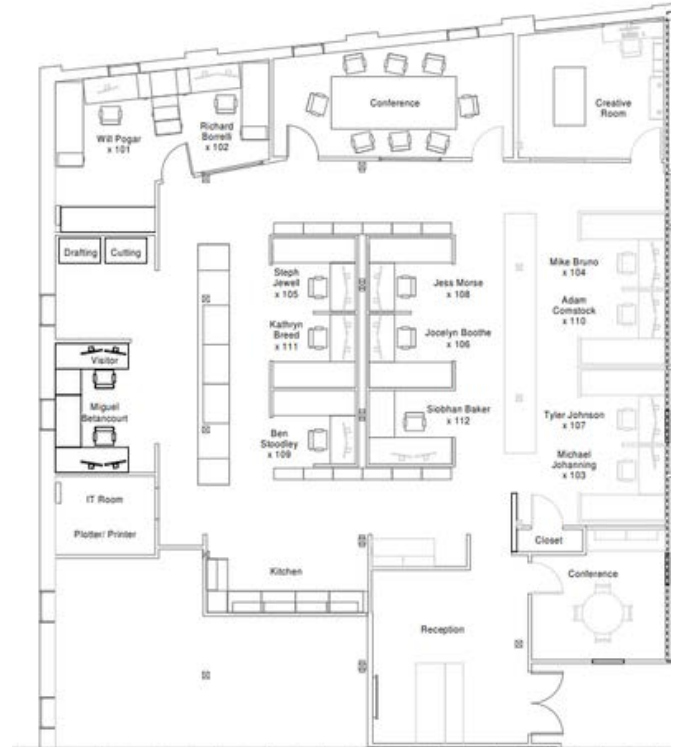
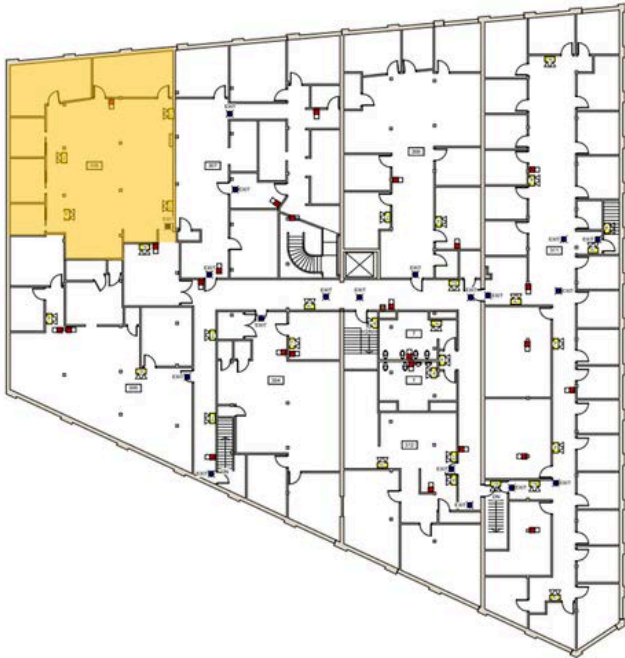
**SUITE 305: 2,350± SF**

**RATE: \$19.00/SF MG**



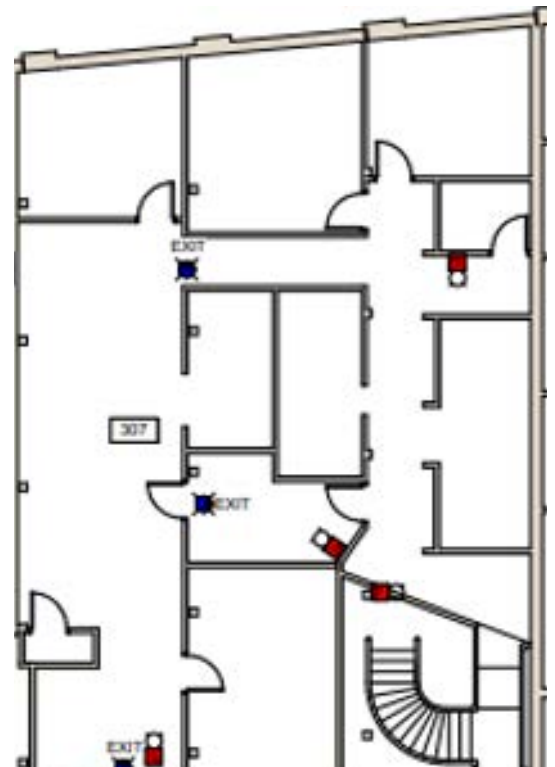
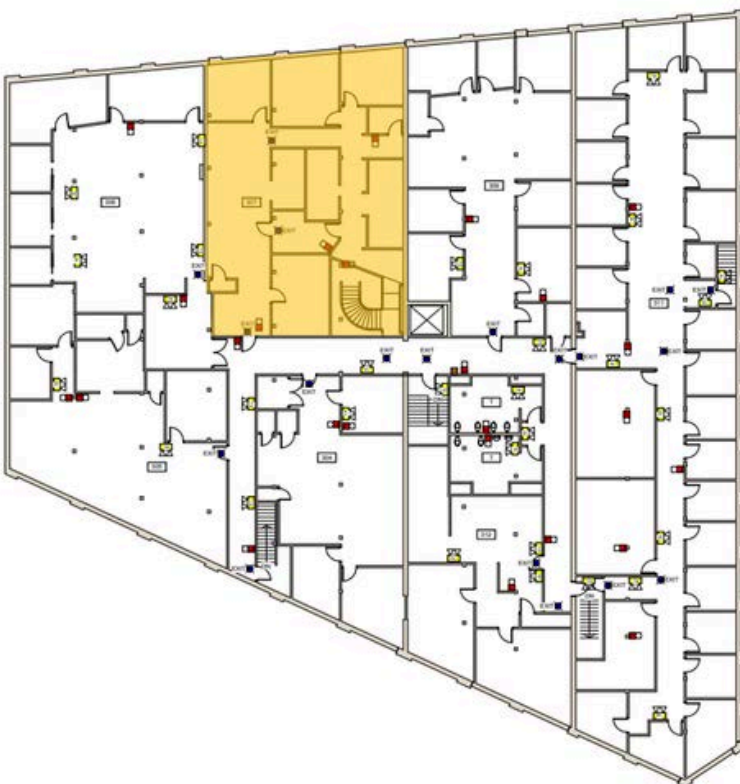
**SUITE 306: 3,787 ± SF**

**RATE: \$19.00/SF MG**



**SUITE 307: 2,432 ± SF**

**RATE: \$19.00/SF MG**





CONTACT US



**Peter Gwilym**

Partner  
c: 207-272-4262  
o: 207-747-1515  
pgwilym@portacompany.com



**Vince Ciampi**

Partner  
c: 207-756-4563  
o: 207-747-1515  
vciampi@portacompany.com

This information has been obtained from sources believed reliable and is intended for informational use only. The information contained herein has not been verified for accuracy or completeness. It is recommended that prospective tenants and buyers conduct their own inspection of the property and verify all information. Any reliance on this information is solely at your own risk. Photos herein are the property of their respective owners. Use of these images without the express written consent of the owner is prohibited.