



23 BRIDGTON ROAD
WESTBROOK, ME
04092

PROPERTY HIGHLIGHTS

- 1,425± SF of office space available for lease at well-maintained, freestanding building with ample on-site parking
- Highly visible location just over the Portland line, minutes from Maine Turnpike (I-95)
- Area businesses include Dunkin', Hannaford, Allagash, 7-Eleven, and more
- Traffic Count: 21,620 vehicles per day (AADT via MDOT - 2022)
- Lease Rate: \$2,250/month MG

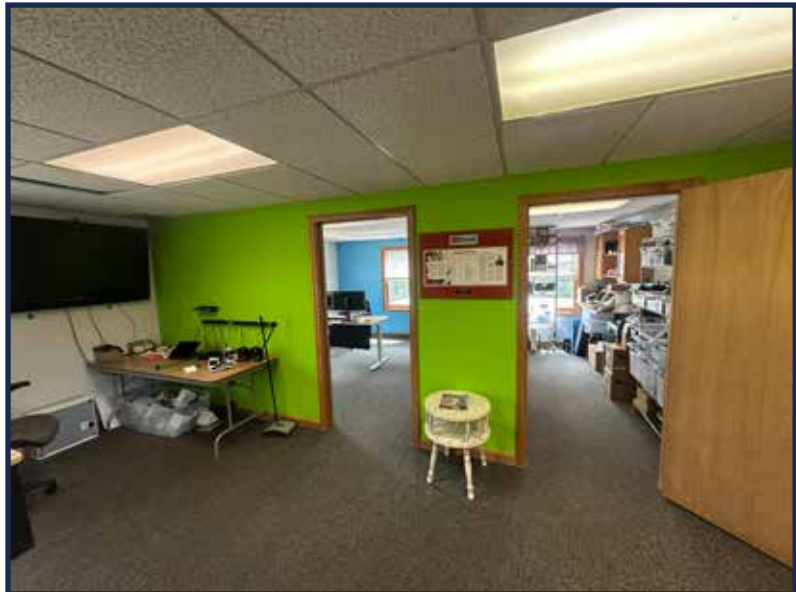
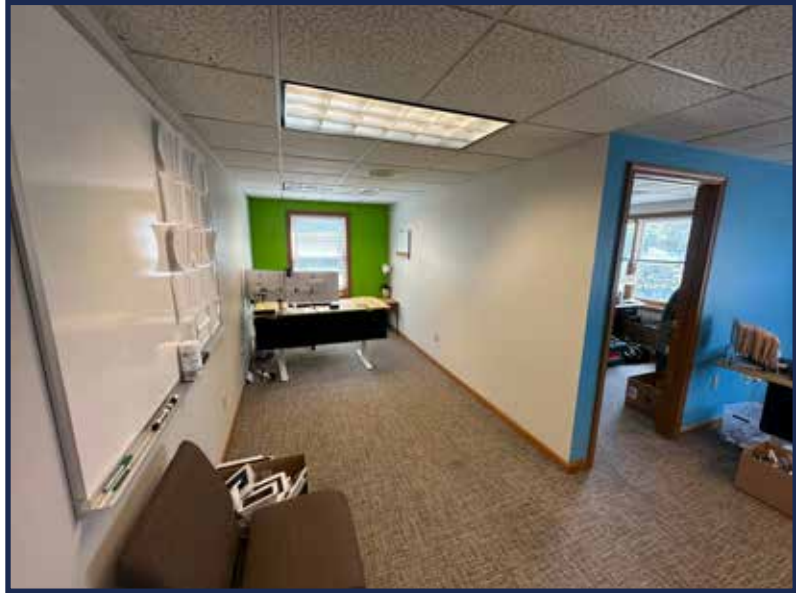
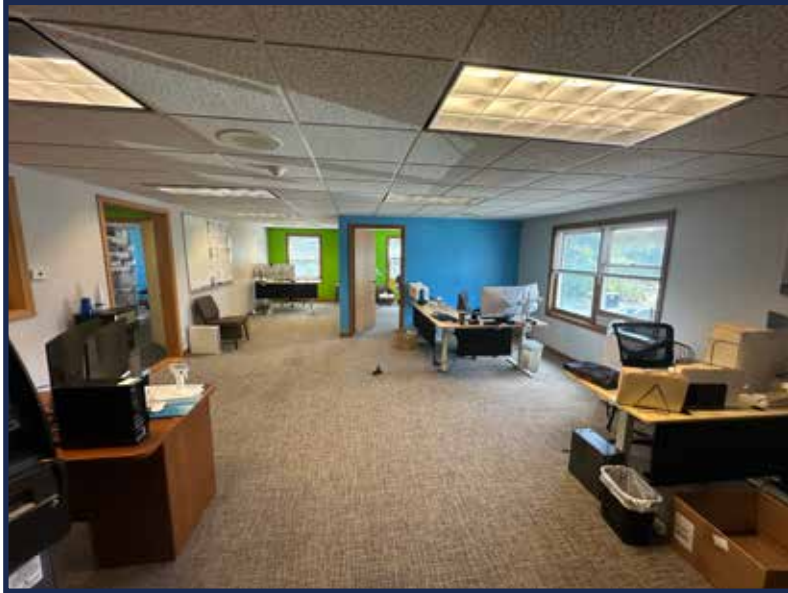
FOR LEASE
OFFICE SPACE

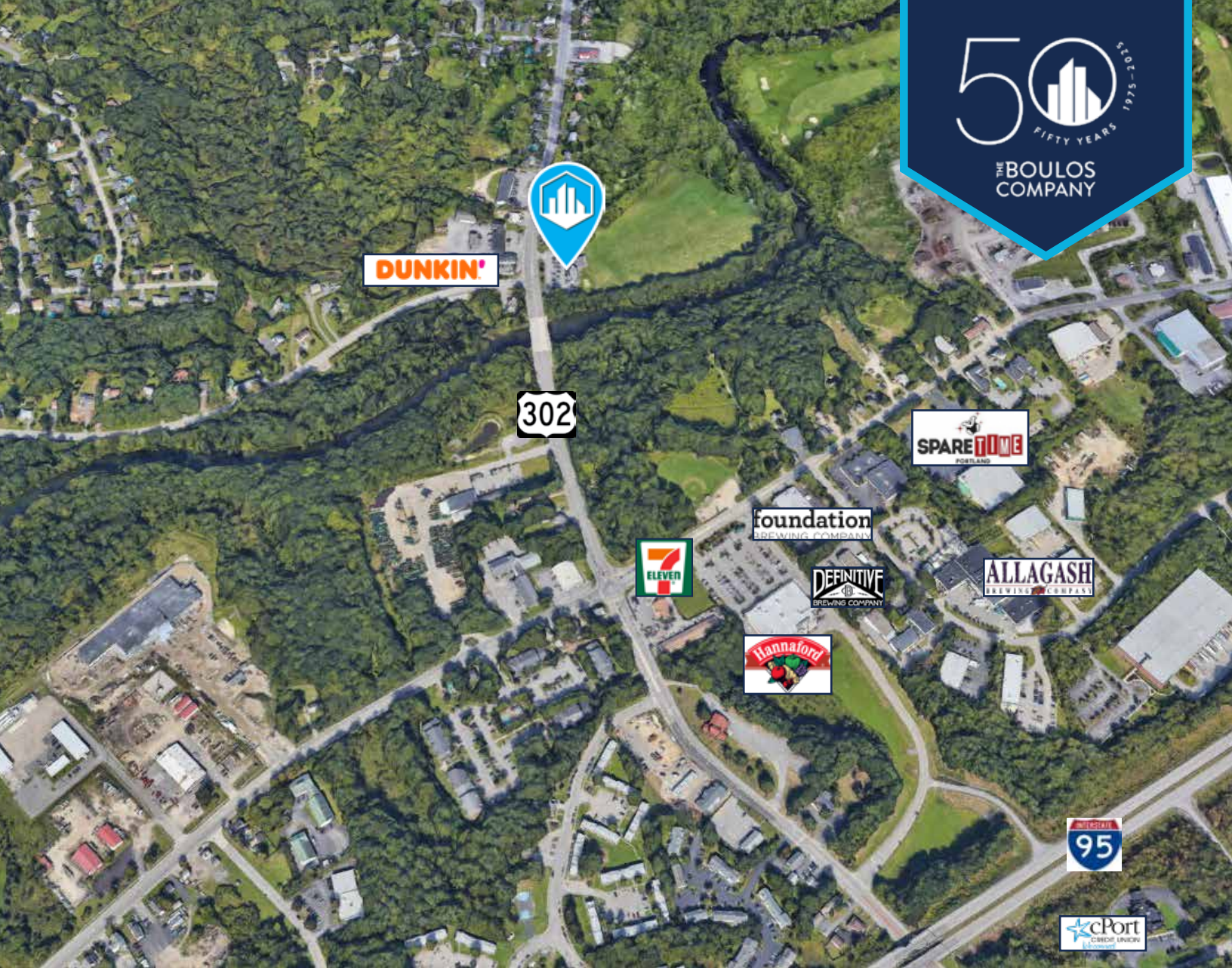
PROPERTY DETAILS

OWNER	Joy Real Estate of Westbrook II, LLC	# OF STORIES	Two (2)
BOOK & PAGE	39383/144	YEAR BUILT	1988 (600± SF addition in 2009)
ASSESSOR'S REFERENCE	016/005	CONSTRUCTION	Wood-frame
LOT SIZE	0.77± acres	HVAC	Gas fired hot air
ZONING	HS - Highway Service	UTILITIES	Municipal water & sewer
BUILDING SIZE	7,000± SF	PARKING	Ample on-site
AVAILABLE SPACE	Suite 8: 1,425± SF (Second Floor)	BUILDING TENANTS	Riverview Physical Therapy, Modern Woodmen of America, Cetera Wealth Partners
DATE AVAILABLE	October 1, 2025	LEASE RATE	\$2,250/month MG



PHOTOS





CONTACT US



JOSEPH ITALIAANDER
Broker
+1 207.553.1730 D
+1 404.933.7844 C
jitaliaander@boulos.com



NATE ROOP
Associate
+1 207.553.1737 D
+1 207.756.3002 C
nroop@boulos.com

©2025 The Boulos Company, Inc. All rights reserved. This information has been obtained from sources believed reliable but has not been verified for accuracy or completeness. You should conduct a careful, independent investigation of the property and verify all information. Any reliance on this information is solely at your own risk. The Boulos Company and The Boulos Company logo are service marks of The Boulos Company, Inc. All other marks displayed on this document are the property of their respective owners. Photos herein are the property of their respective owners. Use of these images without the express written consent of the owner is prohibited.