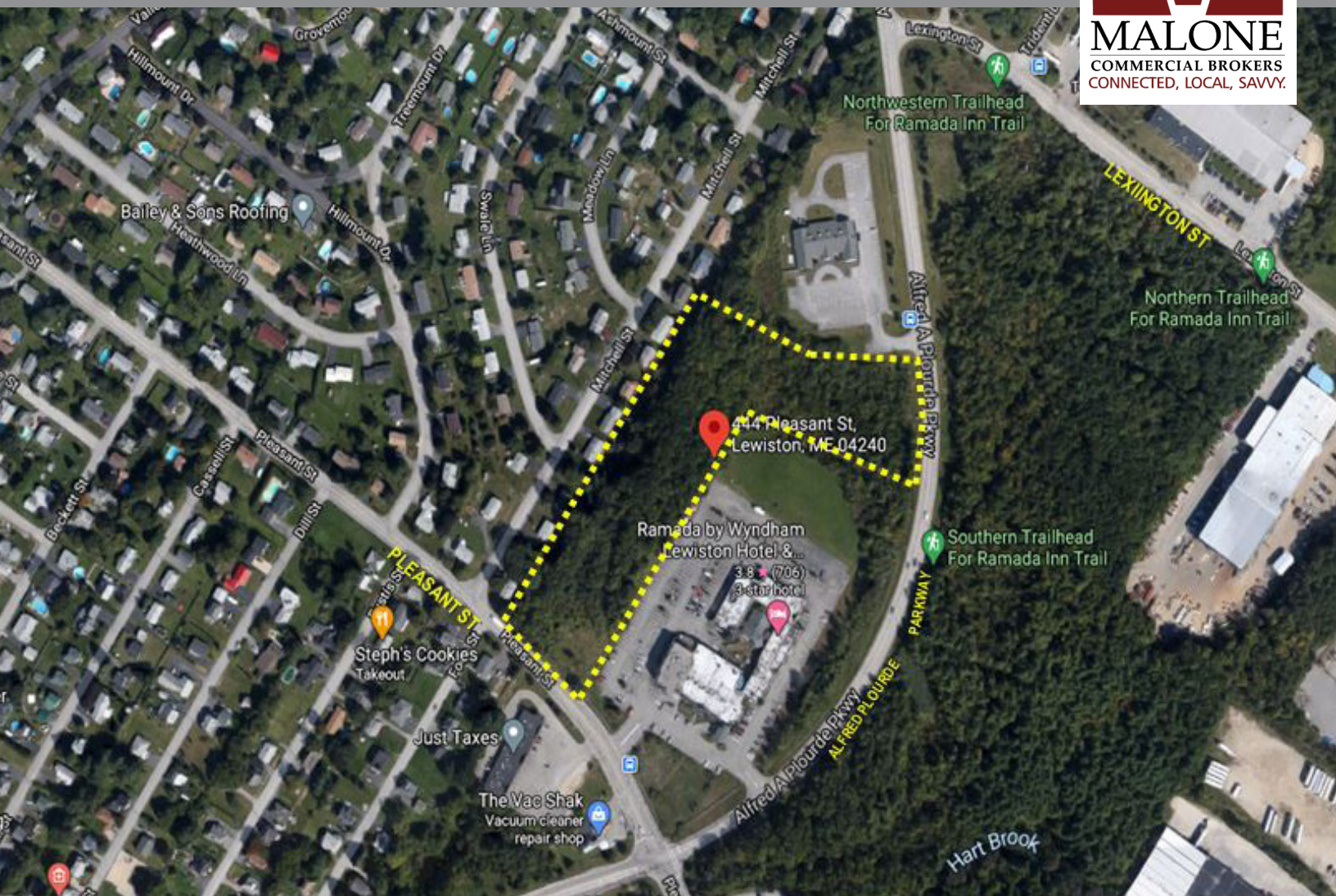


# FOR SALE | COMMERCIAL LAND

444 Pleasant Street | Lewiston, ME



## 6.1 ± ACRES | LOCATE YOUR BUSINESS HERE

- Exceptionally good location for your commercial/industrial business
- Outstanding visibility and access
- Direct access to I-95/Maine Turnpike from Alfred Plourde Parkway
- Highway Business Zone

**SALE PRICE: \$200,000**



**CHERI BONAWITZ, CCIM**

207.210.6638 D

207.240.6844 C

cheri@malonecb.com

**MALONE COMMERCIAL BROKERS**

5 Moulton Street • Suite 3

Portland, ME 04101

207.772.2422 • malonecb.com

# FOR SALE | COMMERCIAL LAND

444 Pleasant Street | Lewiston, ME



DEED: Book 2205, Page 253

ZONING: Highway Business District

ASSESSOR: Map 123, Lot 83

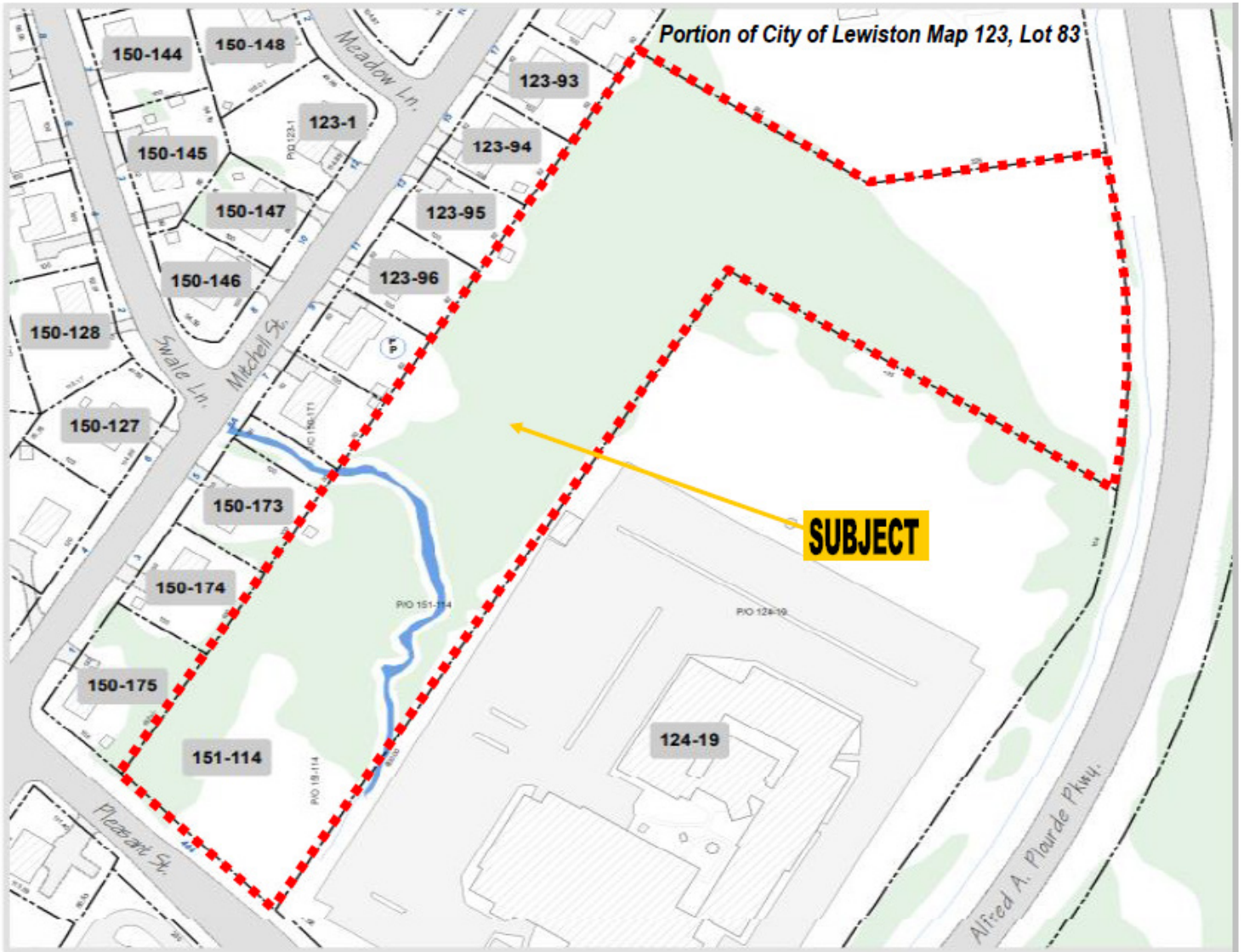
ASSESSED VALUE: \$131,100

LOT SIZE: 6.1± AC

PROPERTY TAXES: \$3,736.35 (2023)

ROAD FRONTAGE: Frontage on Alfred Plourde Pkwy

SALE PRICE: \$200,000



This document has been prepared by Malone Commercial Brokers for advertising and general information only. Malone Commercial Brokers makes no guarantees, representations or warranties of any kind, expressed or implied, regarding, but not limited to, warranties of content, accuracy, and reliability. Any interested party should undertake their own inquiries as to the accuracy of the information. Malone Commercial Brokers excludes unequivocally all informed or implied terms, conditions and warranties arising out of this document and excludes all liability for loss and damages there from. All data is subject to change of price, error, omissions, other conditions or withdrawal without notice. Malone Commercial Brokers is acting as the Seller's/Lessor's agent in the marketing of this property.



**CHERI BONAWITZ, CCIM**

207.210.6638 D

207.240.6844 C

cheri@malonecb.com

**MALONE COMMERCIAL BROKERS**

5 Moulton Street • Suite 3

Portland, ME 04101

207.772.2422 • malonecb.com