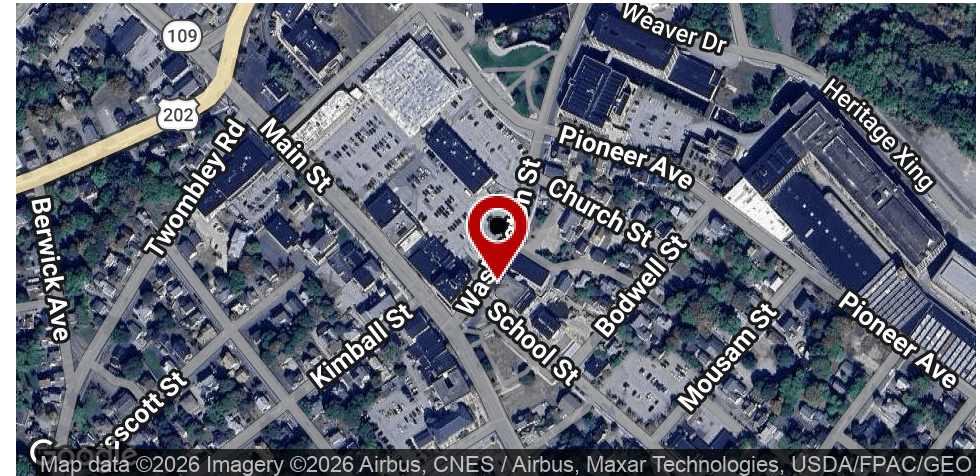


RETAIL FOR LEASE

THE LEAVITT BLOCK

13 Washington St, Sanford, ME 04073



360° VIRTUAL TOUR

PROPERTY DESCRIPTION

Discover the perfect commercial space at 13 Washington St, Sanford, ME. This stunning property offers a prime location with excellent visibility and high foot traffic, ideal for attracting a steady flow of customers. Boasting expansive windows, a versatile layout, and modern amenities, the space provides an inviting environment for retail or street retail tenants to showcase their offerings. With ample parking and easy access to major transportation routes, this property ensures convenience for both tenants and visitors. Embrace the opportunity to establish your retail presence in this thriving location, and take advantage of the dynamic potential for success in this prime commercial space.

OFFERING SUMMARY

Lease Rate:	\$250 - 2,000 per month (Gross; MG)
Number of Units:	7
Available SF:	116 - 3,610 SF
Lot Size:	6,614 SF
Building Size:	16,473 SF

DEMOGRAPHICS

	3 MILES	5 MILES	10 MILES
Total Households	7,292	10,126	21,663
Total Population	17,675	24,355	53,798
Average HH Income	\$83,244	\$88,687	\$98,150

We obtained the information above from sources we believe to be reliable. However, we have not verified its accuracy and make no guarantee, warranty or representation about it. It is submitted subject to the possibility of errors, omissions, change of price, rental or other conditions, prior sale, lease or financing, or withdrawal without notice. We include projections, opinions, assumptions or estimates for example only, and they may not represent current or future performance of the property. You and your tax and legal advisors should conduct your own investigation of the property and transaction.

ETHAN ASH
Commercial & Investment Specialist, MiCP
O: 603.610.8500 X1430
C: 603.707.2319
ethan.ash@kw.com
ME #BA920524

DAVE GARVEY
Managing Director
O: 603.610.8523
C: 603.491.2854
dave@kwclcg.com
ME #BR912042

MARK BOUZIANIS
Commercial Realtor
O: 603.610.8500
C: 603.696.5378
mark@kwclcg.com
NH #081074

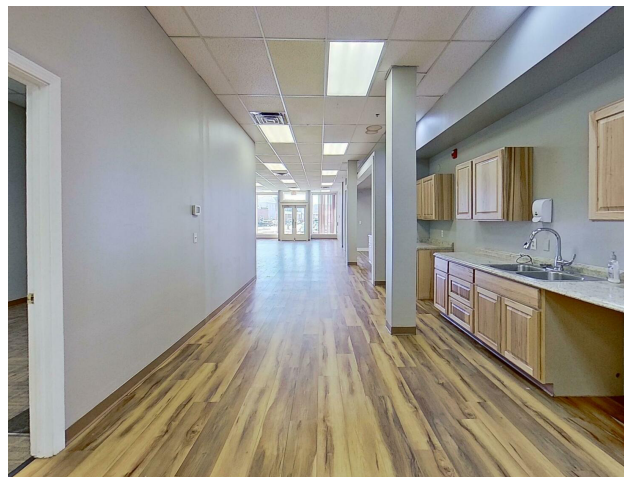
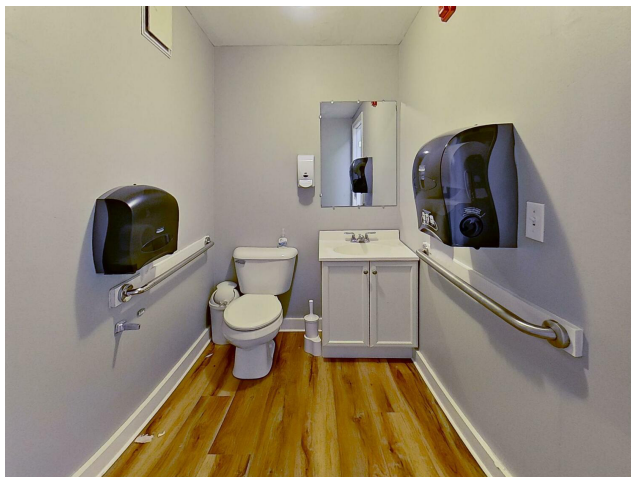
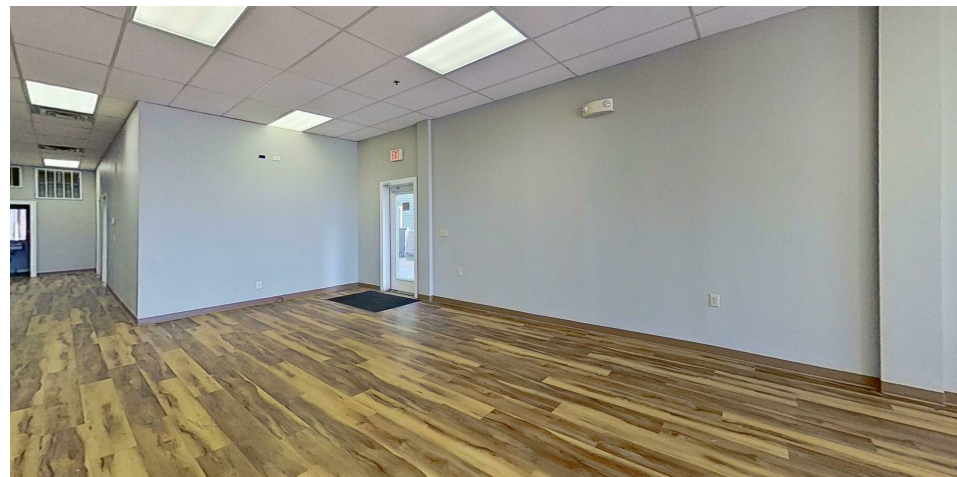
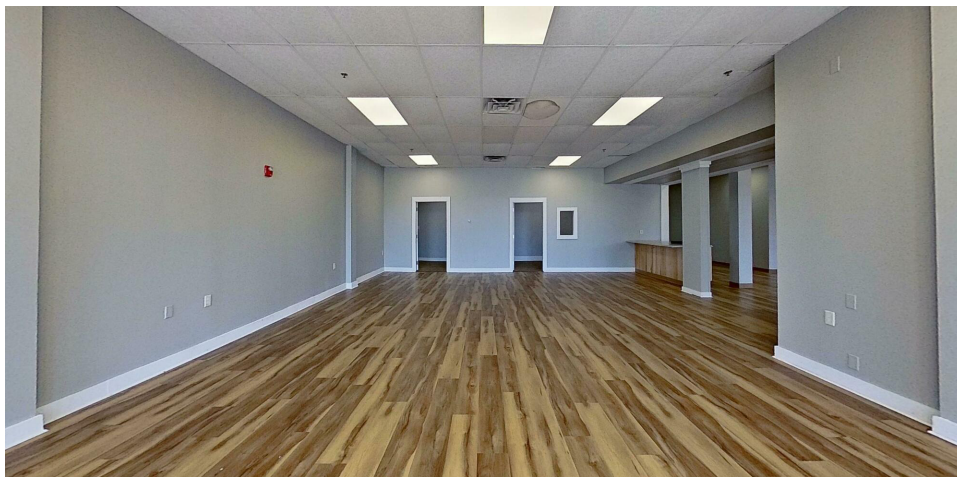
KELLER WILLIAMS COASTAL REALTY
603.610.8500
750 Lafayette Rd.
Suite 201 - Coastal Land & Commercial Group
Portsmouth, NH 03801

Each Office Independently Owned and Operated kwclcg.com

RETAIL FOR LEASE

19-23 WASHINGTON ST

13 Washington St, Sanford, ME 04073



We obtained the information above from sources we believe to be reliable. However, we have not verified its accuracy and make no guarantee, warranty or representation about it. It is submitted subject to the possibility of errors, omissions, change of price, rental or other conditions, prior sale, lease or financing, or withdrawal without notice. We include projections, opinions, assumptions or estimates for example only, and they may not represent current or future performance of the property. You and your tax and legal advisors should conduct your own investigation of the property and transaction.

ETHAN ASH
Commercial & Investment Specialist, MiCP
O: 603.610.8500 X1430
C: 603.707.2319
ethan.ash@kw.com
ME #BA920524

DAVE GARVEY
Managing Director
O: 603.610.8523
C: 603.491.2854
dave@kwclcg.com
ME #BR912042

MARK BOUZIANIS
Commercial Realtor
O: 603.610.8500
C: 603.696.5378
mark@kwclcg.com
NH #081074

KELLER WILLIAMS COASTAL REALTY
603.610.8500
750 Lafayette Rd.
Suite 201 - Coastal Land & Commercial Group
Portsmouth, NH 03801

Each Office Independently Owned and Operated kwclcg.com

RETAIL FOR LEASE

15 WASHINGTON ST

13 Washington St, Sanford, ME 04073



We obtained the information above from sources we believe to be reliable. However, we have not verified its accuracy and make no guarantee, warranty or representation about it. It is submitted subject to the possibility of errors, omissions, change of price, rental or other conditions, prior sale, lease or financing, or withdrawal without notice. We include projections, opinions, assumptions or estimates for example only, and they may not represent current or future performance of the property. You and your tax and legal advisors should conduct your own investigation of the property and transaction.

ETHAN ASH
Commercial & Investment Specialist, MiCP
O: 603.610.8500 X1430
C: 603.707.2319
ethan.ash@kw.com
ME #BA920524

DAVE GARVEY
Managing Director
O: 603.610.8523
C: 603.491.2854
dave@kwclcg.com
ME #BR912042

MARK BOUZIANIS
Commercial Realtor
O: 603.610.8500
C: 603.696.5378
mark@kwclcg.com
NH #081074

KELLER WILLIAMS COASTAL REALTY
603.610.8500
750 Lafayette Rd.
Suite 201 - Coastal Land & Commercial Group
Portsmouth, NH 03801

Each Office Independently Owned and Operated kwclcg.com

THE LEAVITT BLOCK

13 Washington St, Sanford, ME 04073



We obtained the information above from sources we believe to be reliable. However, we have not verified its accuracy and make no guarantee, warranty or representation about it. It is submitted subject to the possibility of errors, omissions, change of price, rental or other conditions, prior sale, lease or financing, or withdrawal without notice. We include projections, opinions, assumptions or estimates for example only, and they may not represent current or future performance of the property. You and your tax and legal advisors should conduct your own investigation of the property and transaction.

ETHAN ASH
Commercial & Investment Specialist, MiCP
O: 603.610.8500 X1430
C: 603.707.2319
ethan.ash@kw.com
ME #BA920524

DAVE GARVEY
Managing Director
O: 603.610.8523
C: 603.491.2854
dave@kwclcg.com
ME #BR912042

MARK BOUZIANIS
Commercial Realtor
O: 603.610.8500
C: 603.696.5378
mark@kwclcg.com
NH #081074

KELLER WILLIAMS COASTAL REALTY
603.610.8500
750 Lafayette Rd.
Suite 201 - Coastal Land & Commercial Group
Portsmouth, NH 03801

RETAIL FOR LEASE

THE LEAVITT BLOCK

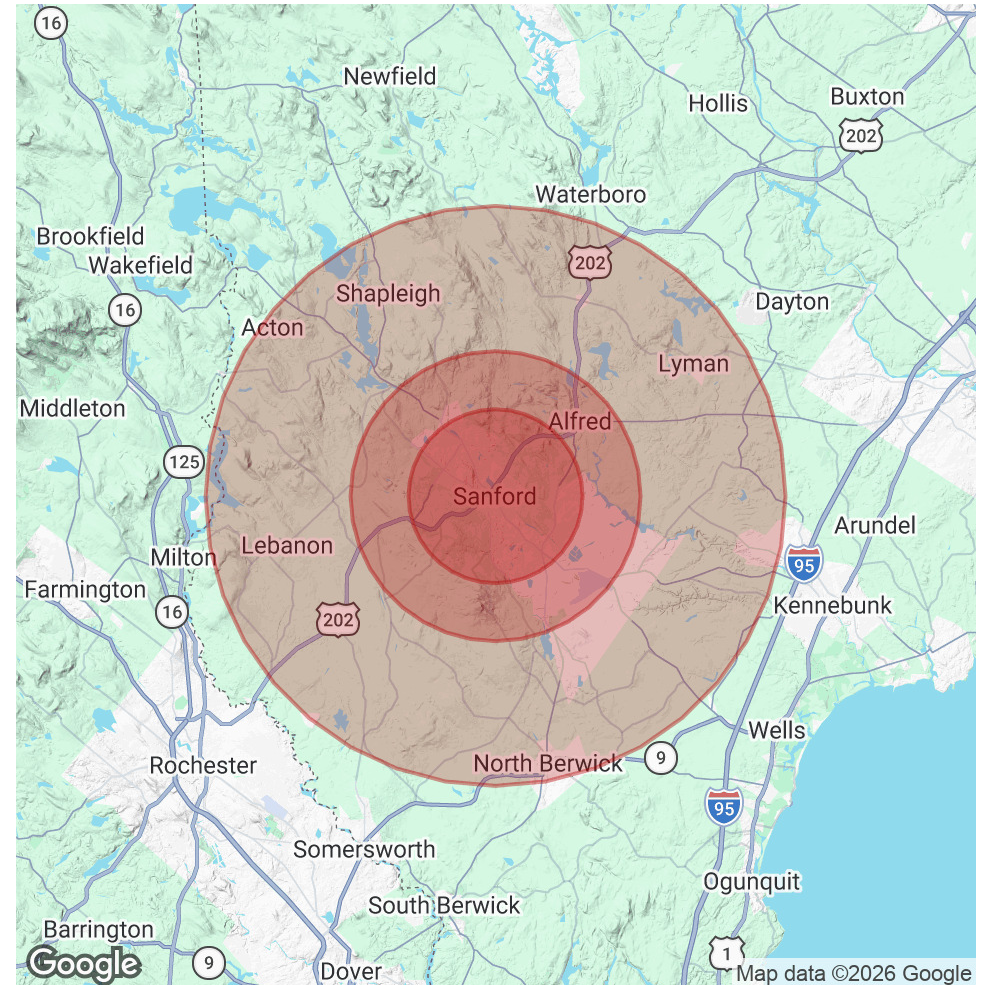
13 Washington St, Sanford, ME 04073



POPULATION	3 MILES	5 MILES	10 MILES
Total Population	17,675	24,355	53,798
Average Age	40.2	42.2	43.4
Average Age (Male)	38.7	41.5	43.0
Average Age (Female)	40.9	42.1	43.5

HOUSEHOLDS & INCOME	3 MILES	5 MILES	10 MILES
Total Households	7,292	10,126	21,663
# of Persons per HH	2.4	2.4	2.5
Average HH Income	\$83,244	\$88,687	\$98,150
Average House Value	\$262,233	\$277,489	\$316,170

2023 American Community Survey (ACS)



We obtained the information above from sources we believe to be reliable. However, we have not verified its accuracy and make no guarantee, warranty or representation about it. It is submitted subject to the possibility of errors, omissions, change of price, rental or other conditions, prior sale, lease or financing, or withdrawal without notice. We include projections, opinions, assumptions or estimates for example only, and they may not represent current or future performance of the property. You and your tax and legal advisors should conduct your own investigation of the property and transaction.

ETHAN ASH
 Commercial & Investment Specialist, MiCP
 O: 603.610.8500 X1430
 C: 603.707.2319
 ethan.ash@kw.com
 ME #BA920524

DAVE GARVEY
 Managing Director
 O: 603.610.8523
 C: 603.491.2854
 dave@kwclcg.com
 ME #BR912042

MARK BOUZIANIS
 Commercial Realtor
 O: 603.610.8500
 C: 603.696.5378
 mark@kwclcg.com
 NH #081074

KELLER WILLIAMS COASTAL REALTY
 603.610.8500
 750 Lafayette Rd.
 Suite 201 - Coastal Land & Commercial Group
 Portsmouth, NH 03801

Each Office Independently Owned and Operated kwclcg.com

RETAIL FOR LEASE

THE LEAVITT BLOCK

13 Washington St, Sanford, ME 04073



We obtained the information above from sources we believe to be reliable. However, we have not verified its accuracy and make no guarantee, warranty or representation about it. It is submitted subject to the possibility of errors, omissions, change of price, rental or other conditions, prior sale, lease or financing, or withdrawal without notice. We include projections, opinions, assumptions or estimates for example only, and they may not represent current or future performance of the property. You and your tax and legal advisors should conduct your own investigation of the property and transaction.

ETHAN ASH
Commercial & Investment Specialist, MiCP
O: 603.610.8500 X1430
C: 603.707.2319
ethan.ash@kw.com
ME #BA920524

DAVE GARVEY
Managing Director
O: 603.610.8523
C: 603.491.2854
dave@kwclcg.com
ME #BR912042

MARK BOUZIANIS
Commercial Realtor
O: 603.610.8500
C: 603.696.5378
mark@kwclcg.com
NH #081074

KELLER WILLIAMS COASTAL REALTY
603.610.8500
750 Lafayette Rd.
Suite 201 - Coastal Land & Commercial Group
Portsmouth, NH 03801

Each Office Independently Owned and Operated kwclcg.com

RETAIL FOR LEASE

THE LEAVITT BLOCK

13 Washington St, Sanford, ME 04073



We obtained the information above from sources we believe to be reliable. However, we have not verified its accuracy and make no guarantee, warranty or representation about it. It is submitted subject to the possibility of errors, omissions, change of price, rental or other conditions, prior sale, lease or financing, or withdrawal without notice. We include projections, opinions, assumptions or estimates for example only, and they may not represent current or future performance of the property. You and your tax and legal advisors should conduct your own investigation of the property and transaction.

ETHAN ASH
Commercial & Investment Specialist, MiCP
O: 603.610.8500 X1430
C: 603.707.2319
ethan.ash@kw.com
ME #BA920524

DAVE GARVEY
Managing Director
O: 603.610.8523
C: 603.491.2854
dave@kwclcg.com
ME #BR912042

MARK BOUZIANIS
Commercial Realtor
O: 603.610.8500
C: 603.696.5378
mark@kwclcg.com
NH #081074

KELLER WILLIAMS COASTAL REALTY
603.610.8500
750 Lafayette Rd.
Suite 201 - Coastal Land & Commercial Group
Portsmouth, NH 03801

Each Office Independently Owned and Operated kwclcg.com

RETAIL FOR LEASE

THE LEAVITT BLOCK

13 Washington St, Sanford, ME 04073



LEASE INFORMATION

Lease Type: Gross; MG Lease Term: Negotiable
Total Space: 116 - 3,610 SF Lease Rate: \$250 - \$2,000 per month

AVAILABLE SPACES

SUITE	TENANT	SIZE (SF)	LEASE TYPE	LEASE RATE	DESCRIPTION
15 Washington St.	Available	141 SF	Gross	\$350 per month	873 SF of Common area/ reception area
15 Washington St.	Available	176 SF	Gross	\$350 per month	873 SF of Common area/ reception area
15 Washington St.	Available	116 SF	Gross	\$275 per month	873 SF of Common area/ reception area
15 Washington St.	Available	153 SF	Gross	\$300 per month	873 SF of Common area/ reception area
15 Washington St.	Available	197 SF	Gross	\$250 - \$400 per month	873 SF of Common area/ reception area Space as is \$250/month and if changed flooring to \$400/month
19 Washington St.	Available	1,696 - 3,610 SF	Modified Gross	\$1,750 per month	Potentially combined with 23 Washington St.
23 Washington St.	Available	1,914 SF	Modified Gross	\$2,000 per month	-

We obtained the information above from sources we believe to be reliable. However, we have not verified its accuracy and make no guarantee, warranty or representation about it. It is submitted subject to the possibility of errors, omissions, change of price, rental or other conditions, prior sale, lease or financing, or withdrawal without notice. We include projections, opinions, assumptions or estimates for example only, and they may not represent current or future performance of the property. You and your tax and legal advisors should conduct your own investigation of the property and transaction.

ETHAN ASH
Commercial & Investment Specialist, MiCP
O: 603.610.8500 X1430
C: 603.707.2319
ethan.ash@kw.com
ME #BA920524

DAVE GARVEY
Managing Director
O: 603.610.8523
C: 603.491.2854
dave@kwclcg.com
ME #BR912042

MARK BOUZIANIS
Commercial Realtor
O: 603.610.8500
C: 603.696.5378
mark@kwclcg.com
NH #081074

KELLER WILLIAMS COASTAL REALTY
603.610.8500
750 Lafayette Rd.
Suite 201 - Coastal Land & Commercial Group
Portsmouth, NH 03801

Each Office Independently Owned and Operated kwclcg.com

RETAIL FOR LEASE

THE LEAVITT BLOCK

13 Washington St, Sanford, ME 04073



LOCATION DESCRIPTION

Located in the bustling heart of Sanford, ME, the area surrounding the location offers a vibrant and diverse mix of activities and attractions. Just steps away, tenants will find a charming mix of independent shops, inviting cafes, and popular local eateries, making the area a prime destination for retail enthusiasts. Nestled in a historic yet thriving community, the location benefits from steady foot traffic and a strong sense of community engagement. With convenient access to nearby parks, museums, and cultural centers, this area is an ideal choice for retail tenants looking to tap into a dynamic and engaged customer base.

LOCATION DETAILS

County

York



We obtained the information above from sources we believe to be reliable. However, we have not verified its accuracy and make no guarantee, warranty or representation about it. It is submitted subject to the possibility of errors, omissions, change of price, rental or other conditions, prior sale, lease or financing, or withdrawal without notice. We include projections, opinions, assumptions or estimates for example only, and they may not represent current or future performance of the property. You and your tax and legal advisors should conduct your own investigation of the property and transaction.

ETHAN ASH
Commercial & Investment Specialist, MiCP
O: 603.610.8500 X1430
C: 603.707.2319
ethan.ash@kw.com
ME #BA920524

DAVE GARVEY
Managing Director
O: 603.610.8523
C: 603.491.2854
dave@kwclcg.com
ME #BR912042

MARK BOUZIANIS
Commercial Realtor
O: 603.610.8500
C: 603.696.5378
mark@kwclcg.com
NH #081074

KELLER WILLIAMS COASTAL REALTY

603.610.8500
750 Lafayette Rd.
Suite 201 - Coastal Land & Commercial Group
Portsmouth, NH 03801

Each Office Independently Owned and Operated kwclcg.com

RETAIL FOR LEASE

THE LEAVITT BLOCK

13 Washington St, Sanford, ME 04073



ETHAN ASH

Commercial & Investment Specialist, MiCP

Direct: 603.610.8500 x1430 **Cell:** 603.707.2319
ethan.ash@kw.com

ME #BA920524 // NH #071469 MA #9575540



DAVE GARVEY

Managing Director

Direct: 603.610.8523 **Cell:** 603.491.2854
dave@kwclcg.com

ME #BR912042 // NH #004637



MARK BOUZIANIS

Commercial Realtor

Direct: 603.610.8500 **Cell:** 603.696.5378
mark@kwclcg.com

NH #081074

We obtained the information above from sources we believe to be reliable. However, we have not verified its accuracy and make no guarantee, warranty or representation about it. It is submitted subject to the possibility of errors, omissions, change of price, rental or other conditions, prior sale, lease or financing, or withdrawal without notice. We include projections, opinions, assumptions or estimates for example only, and they may not represent current or future performance of the property. You and your tax and legal advisors should conduct your own investigation of the property and transaction.

ETHAN ASH
Commercial & Investment Specialist, MiCP
O: 603.610.8500 X1430
C: 603.707.2319
ethan.ash@kw.com
ME #BA920524

DAVE GARVEY
Managing Director
O: 603.610.8523
C: 603.491.2854
dave@kwclcg.com
ME #BR912042

MARK BOUZIANIS
Commercial Realtor
O: 603.610.8500
C: 603.696.5378
mark@kwclcg.com
NH #081074

KELLER WILLIAMS COASTAL REALTY
603.610.8500
750 Lafayette Rd.
Suite 201 - Coastal Land & Commercial Group
Portsmouth, NH 03801

Each Office Independently Owned and Operated kwclcg.com