

PORTA  
& CO.

# West End Portland Office Suite

181 State Street | Portland, ME



## Property Highlights

- Third floor office spaces available, walk up only
- Centrally located in Longfellow Square
- Parking available at market rates
- Large windows allow for impressive natural lighting and views overlooking Congress Street
- Access to shared Kitchenette

**PORTA & CO.**

COMMERCIAL REAL ESTATE

30 Milk Street, Second Floor  
Portland, ME 04101  
207-747-1515  
[www.portacompany.com](http://www.portacompany.com)

**Owner:** Longfellow Square, LLC

---

**Year Built:** 1918

---

**Heat:** Natural Gas, Forced Hot Air

---

**A/C:** Window Units

---

**Elevator:** None, walk up only

---

**Parking:** Surface lot parking available one block away

---

**Parking Rate:** Market rates

---

**Utilities:** Included in monthly rent

---

**Square Footage:** **LEASED** ~~Suite 202: 930± SF~~  
Suite 302: 475± SF

---

**Lease Rate:** **LEASED** ~~Suite 202: \$1,500/month Gross~~  
Suite 302: \$900/month Gross

---

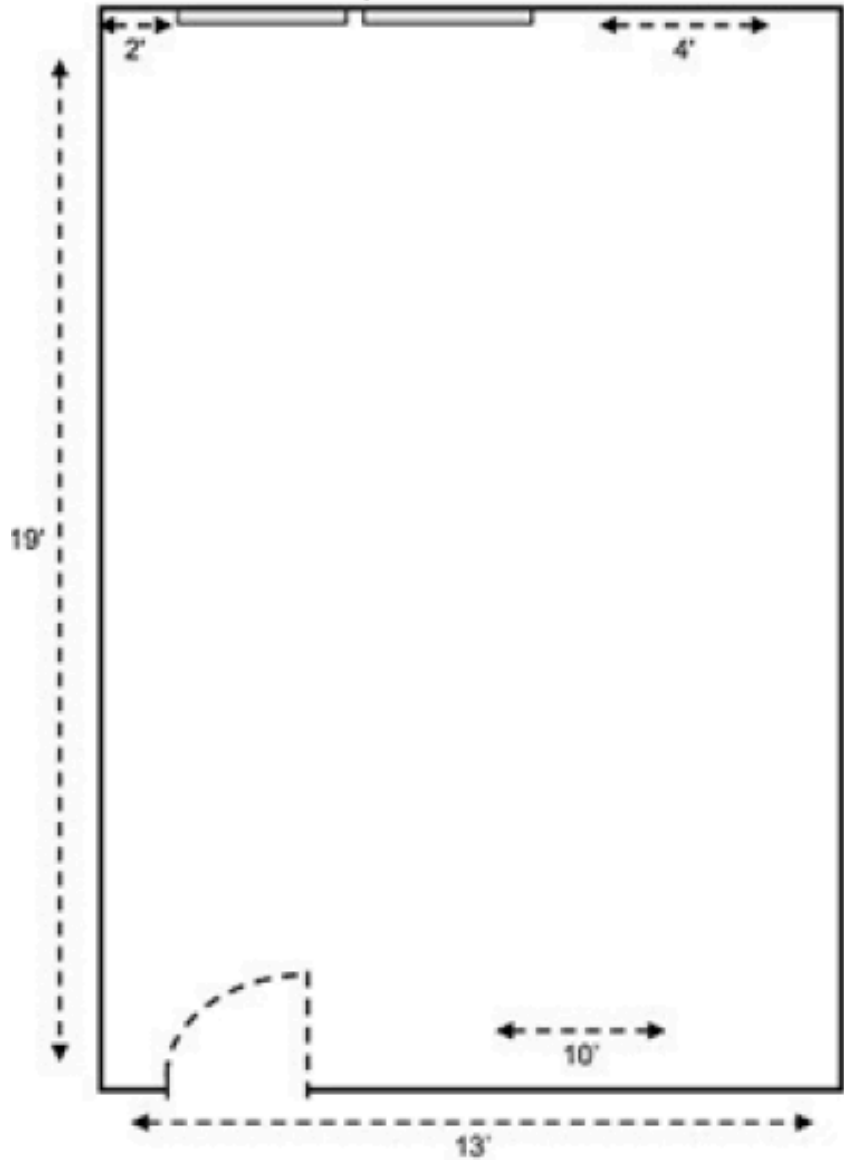
## Suite 302:

\$900/month Gross

475± SF

*Available now*

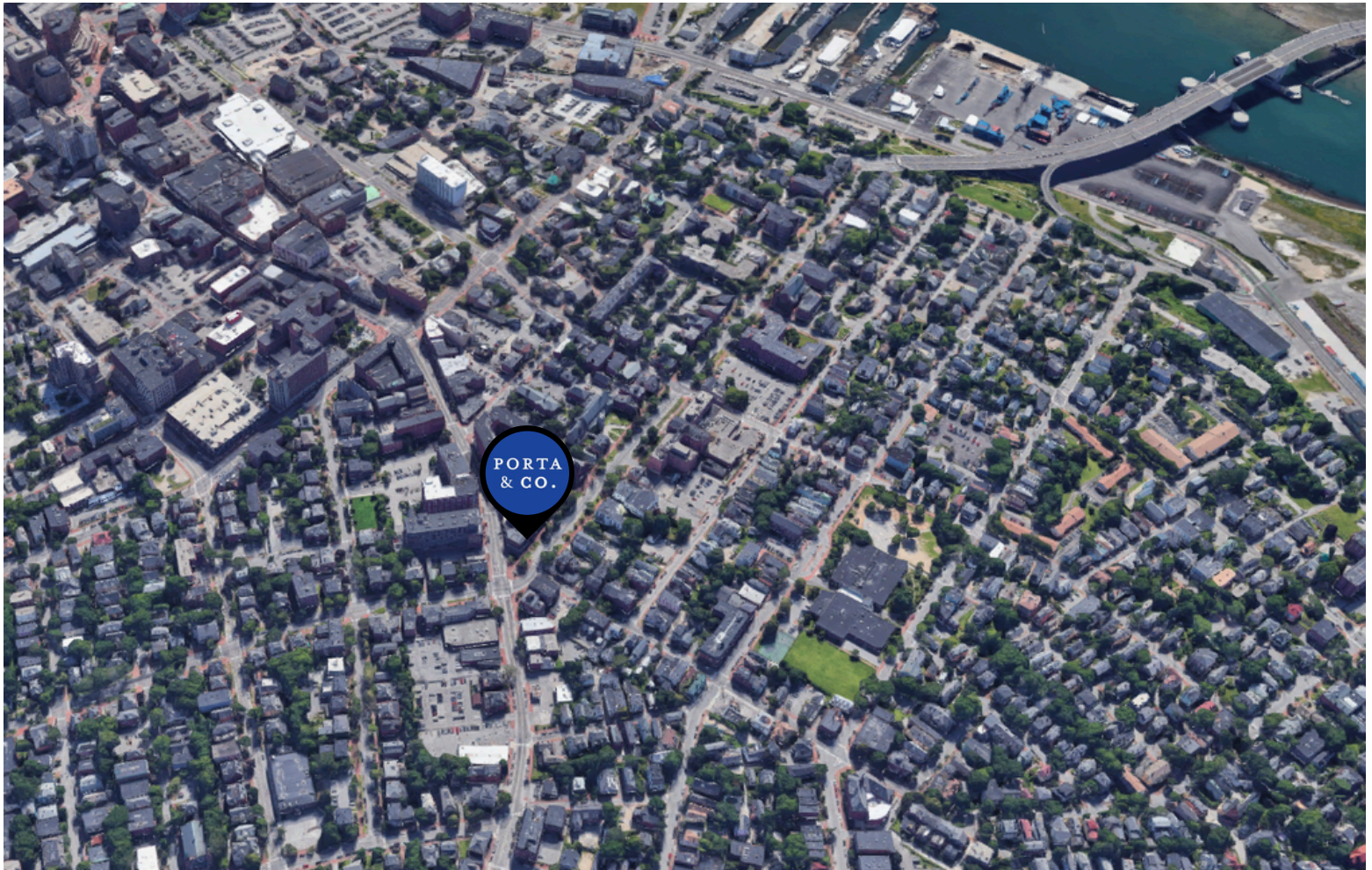
## Congress Street



**PORTA  
& CO.**

# Property Aerial

181 State Street | Portland, ME



## CONTACT



**Peter Gwilym**

Broker  
c: 207-272-4262  
o: 207-558-0901  
pgwilym@portacompany.com



**Emmett Peoples**

Associate Broker  
c: 207-400-4939  
o: 207-747-1515  
epeoples@portacompany.com

This information has been obtained from sources believed reliable and is intended for informational use only. The information contained herein has not been verified for accuracy or completeness. It is recommended that prospective tenants and buyers conduct their own inspection of the property and verify all information. Any reliance on this information is solely at your own risk. Photos herein are the property of their respective owners. Use of these images without the express written consent of the owner is prohibited.

**PORTA & CO.**

COMMERCIAL REAL ESTATE

30 Milk Street, Second Floor  
Portland, ME 04101  
207-747-1515  
www.portacompany.com