

## OFFICE SPACE FOR LEASE

40 Stark Street  
Manchester, NH



1st Floor...1,218 RSF.....\$2,415 Gross/Mo.

2nd Floor ...1,361 RSF.....\$2,700 Gross/Mo.  
(subdividable to 1,154 RSF.....\$2,300 Gross/Mo.)

Or lease 1st & 2nd Floor...2,500+/- RSF.....\$5,000 Gross/Mo.

Prices net of cleaning & parking (available @ (\$130/space/month))

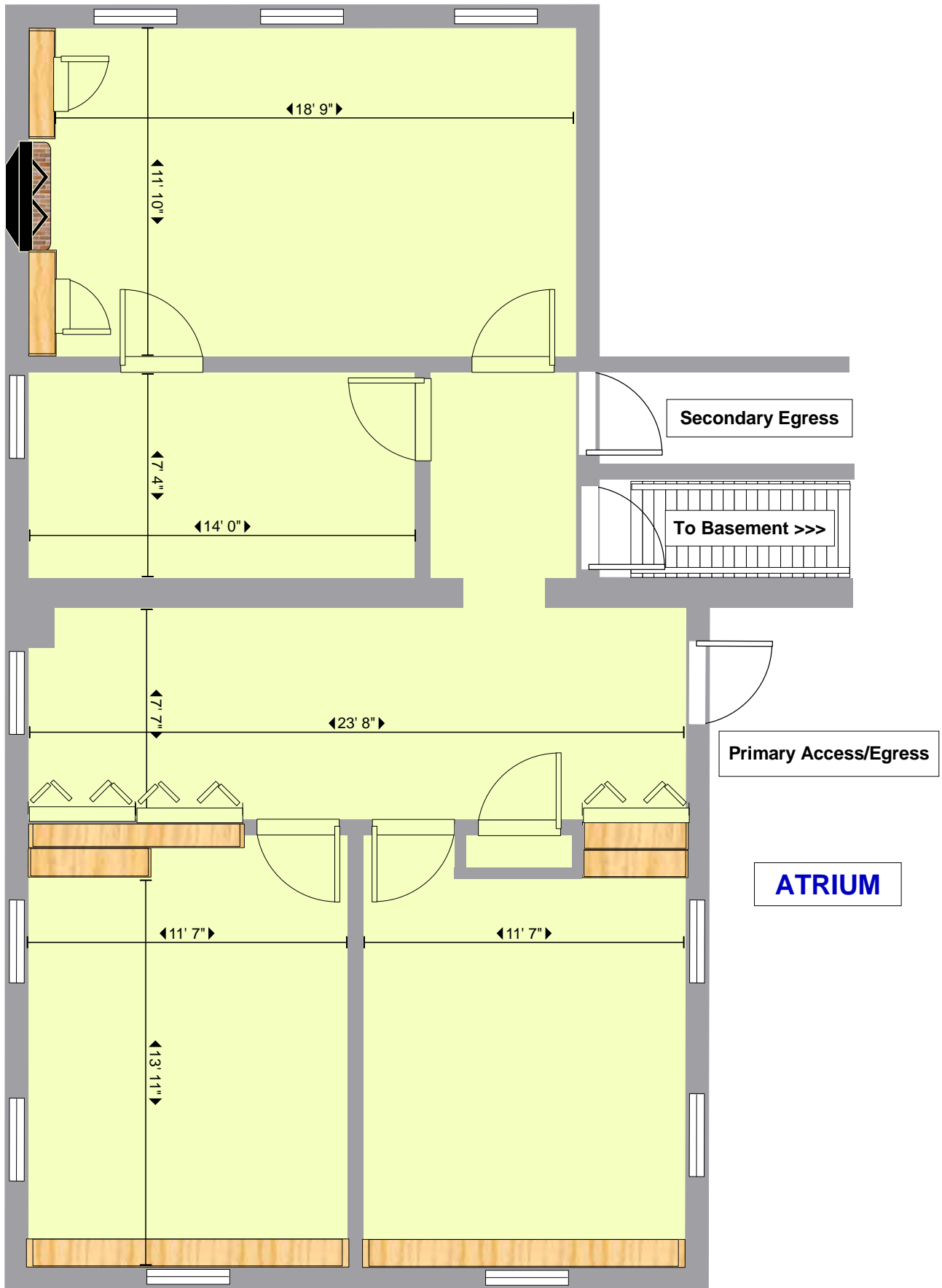
- Free use of shared conference rooms, kitchen, etc.
- Excellent location in the heart of Downtown
- Adjacent to City Hall and the YMCA – with nearby restaurants, shops and the SNHU Arena
- Stately brick and granite building with a slate roof
- Three story atrium with bright natural light
- Beautiful landscaping accented by wrought iron lampposts, granite columns and a brick walkway



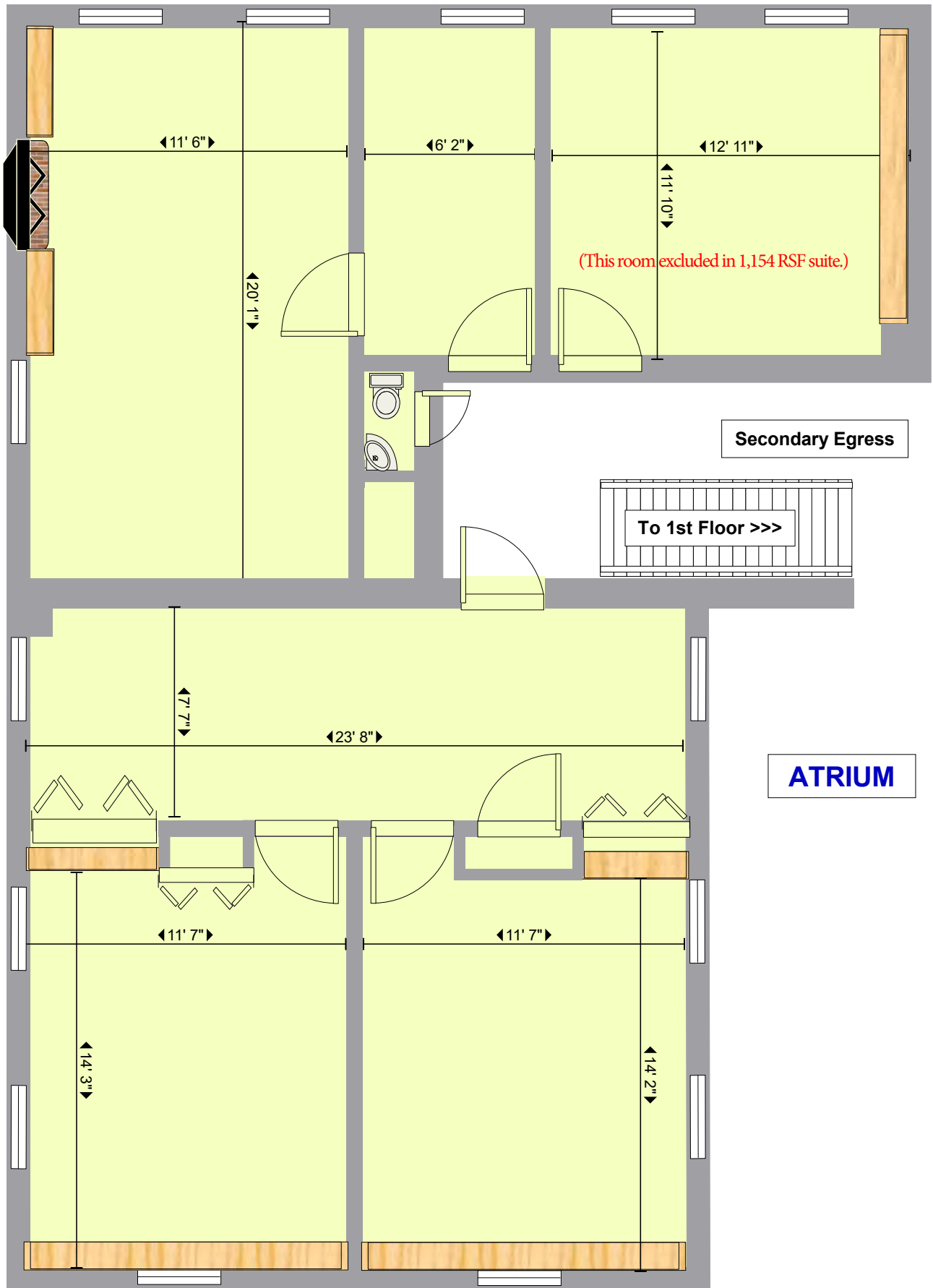
This information was secured from sources deemed reliable, but we make no representation or warranties, expressed or implied, as to the accuracy of the information. Representatives of INEX Properties or its related companies may be construed to have an equity interest in this property.

Mark A. Lacombe, CCIM  
mlacombe@inex.com

40 Stark Street, Manchester, NH 03101  
Telephone 603-665-6153



<b>40 Stark Street</b>
<b>First Floor Atrium - 1,218 RSF</b>
<b>Approximate measurements</b>
<b>Not to scale</b>



Secondary Egress

To 1st Floor >>>

ATRIUM

40 Stark Street  
 Second Floor Atrium - 1,154 to 1,361 RSF  
 Approximate measurements  
 Not to scale