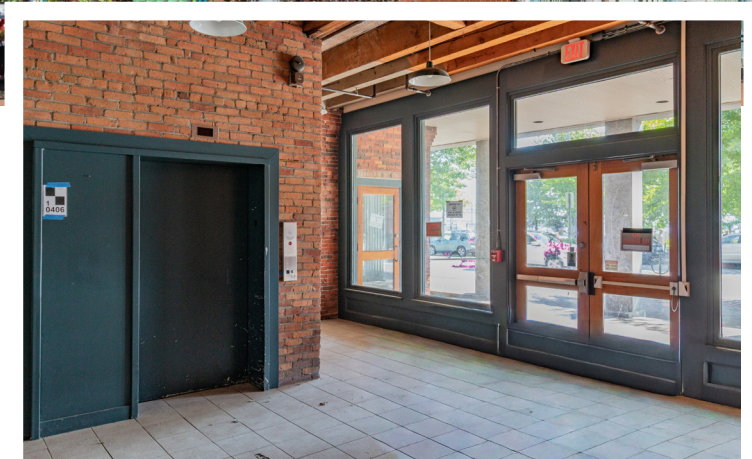


# FOR LEASE • OFFICE SPACE

35 Commercial Street • Portland, ME



## 5,510 – 26,821± SF OFFICE SPACE

- Highly visible Old Port location across from the Ferry Terminal on Portland's waterfront
- Historic brick and beam office space on the 2nd-5th floors
- Easy access to I-295 and I-95/The Maine Turnpike

**LEASE RATE: \$24.00/SF NNN**



**Joe Malone, CCIM**  
O 207.773.2554  
C 207.233.8000  
Joe@malonecb.com



**Luke Malone**  
O 207.358.0475  
C 207.939.0155  
Luke@malonecb.com



# PROPERTY SUMMARY

35 Commercial Street • Portland, ME



## Site Info

OWNER:	Olympia Galt Block LLC
DEED:	Book 39023, Page 019
ASSESSOR:	Map 29, Block P, Lot 27
LOT SIZE:	0.21± AC
SIGNAGE:	Building signage available
ZONING:	B-6



## Building Info

BUILDING SIZE:	39,977± SF
AVAILABLE SPACE:	2nd Floor: 7,071± SF 3rd Floor: 7,119± SF 4th Floor: 7,121± SF 5th Floor: 5,510± SF
YEAR BUILT:	1860; renovated in 1995
CONSTRUCTION:	Brick & wood beam
ROOF:	Slate
SIDING:	Brick
FLOORING:	Carpet
UTILITIES:	Municipal water/sewer
RESTROOM:	2 per floor except for the 5th floor
SPRINKLER:	Wet system
ELEVATOR:	Yes



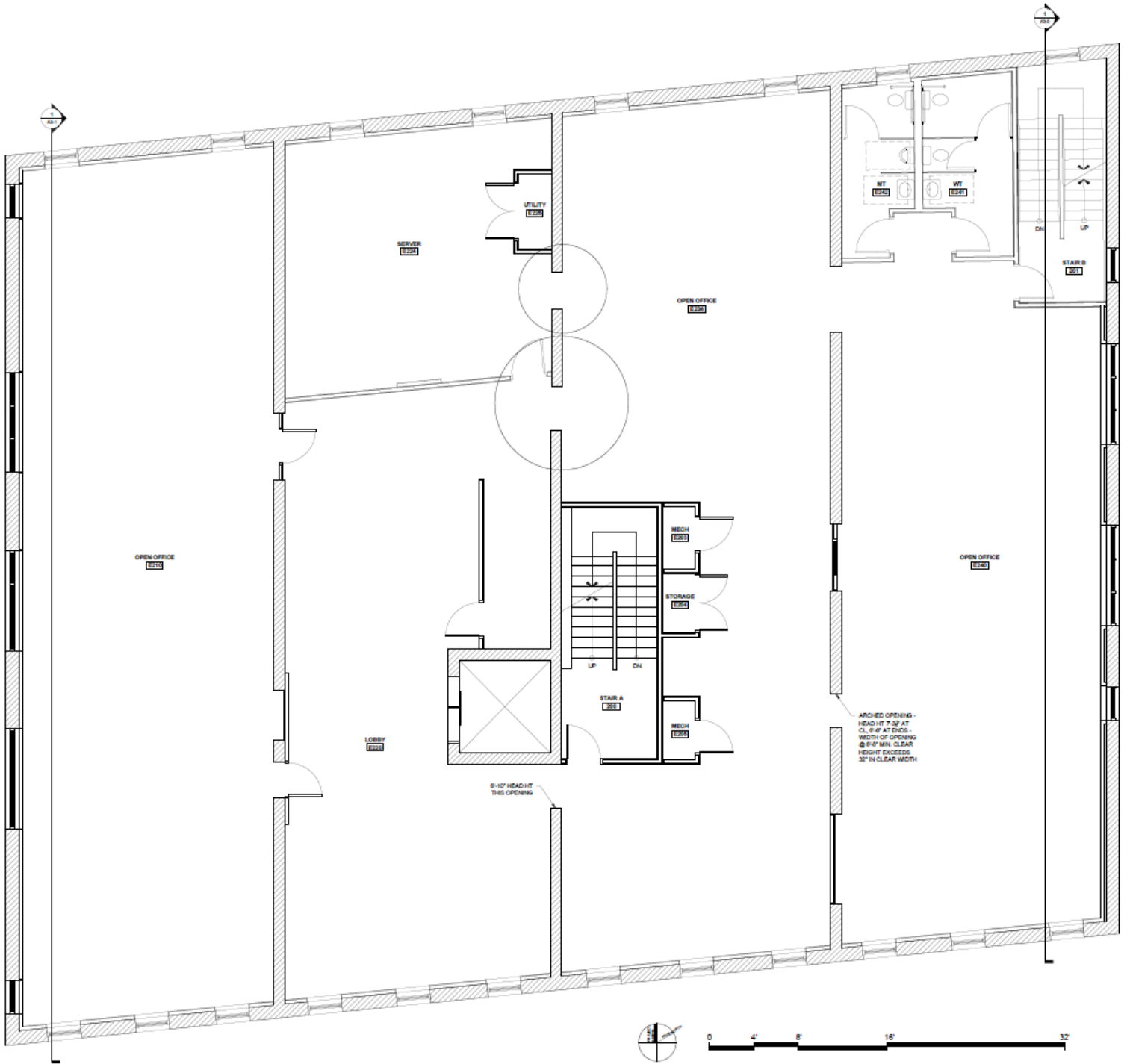
# PHOTOS

35 Commercial Street • Portland, ME



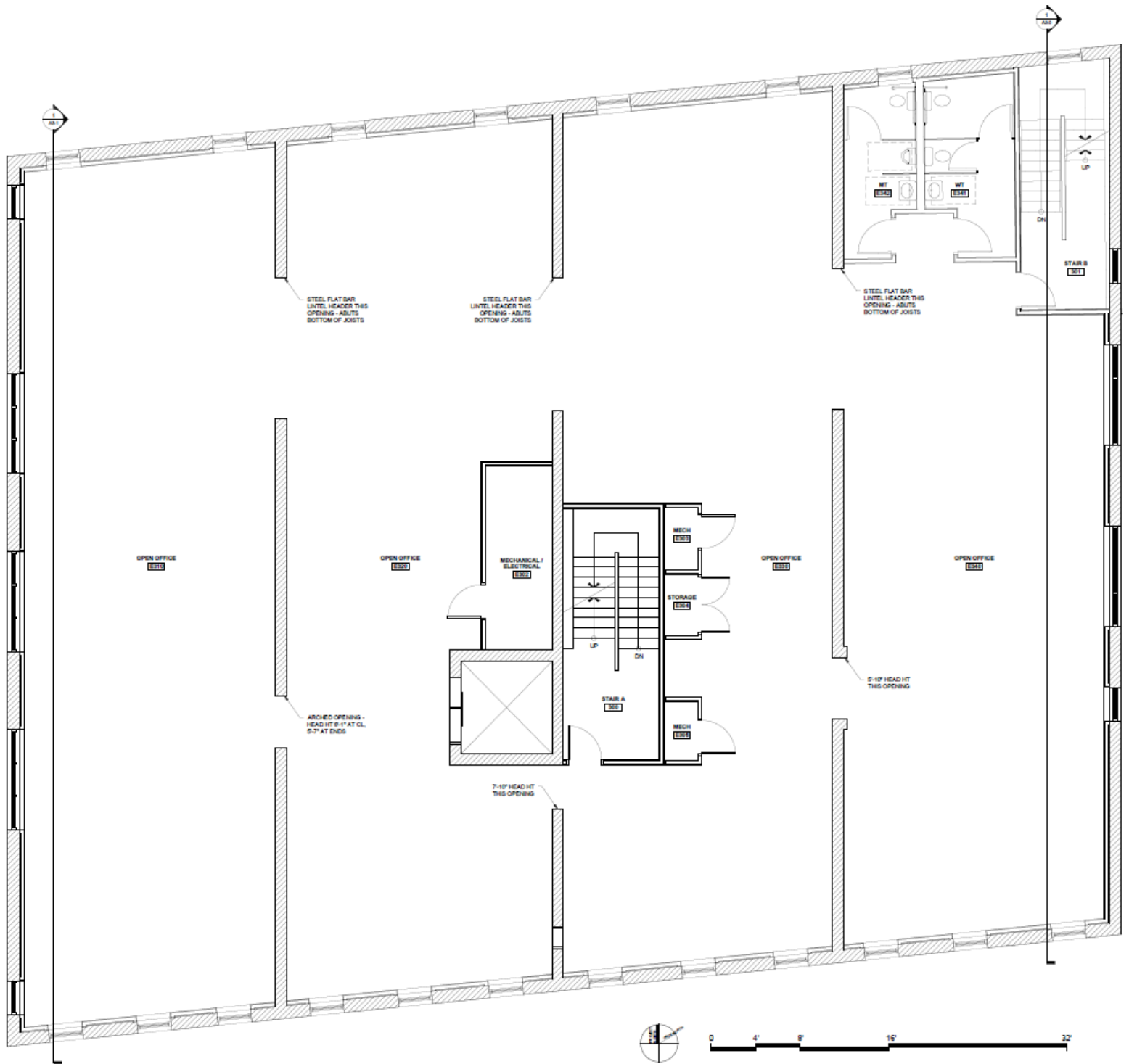
# SECOND FLOOR PLAN

35 Commercial Street • Portland, ME



# THIRD FLOOR PLAN

35 Commercial Street • Portland, ME



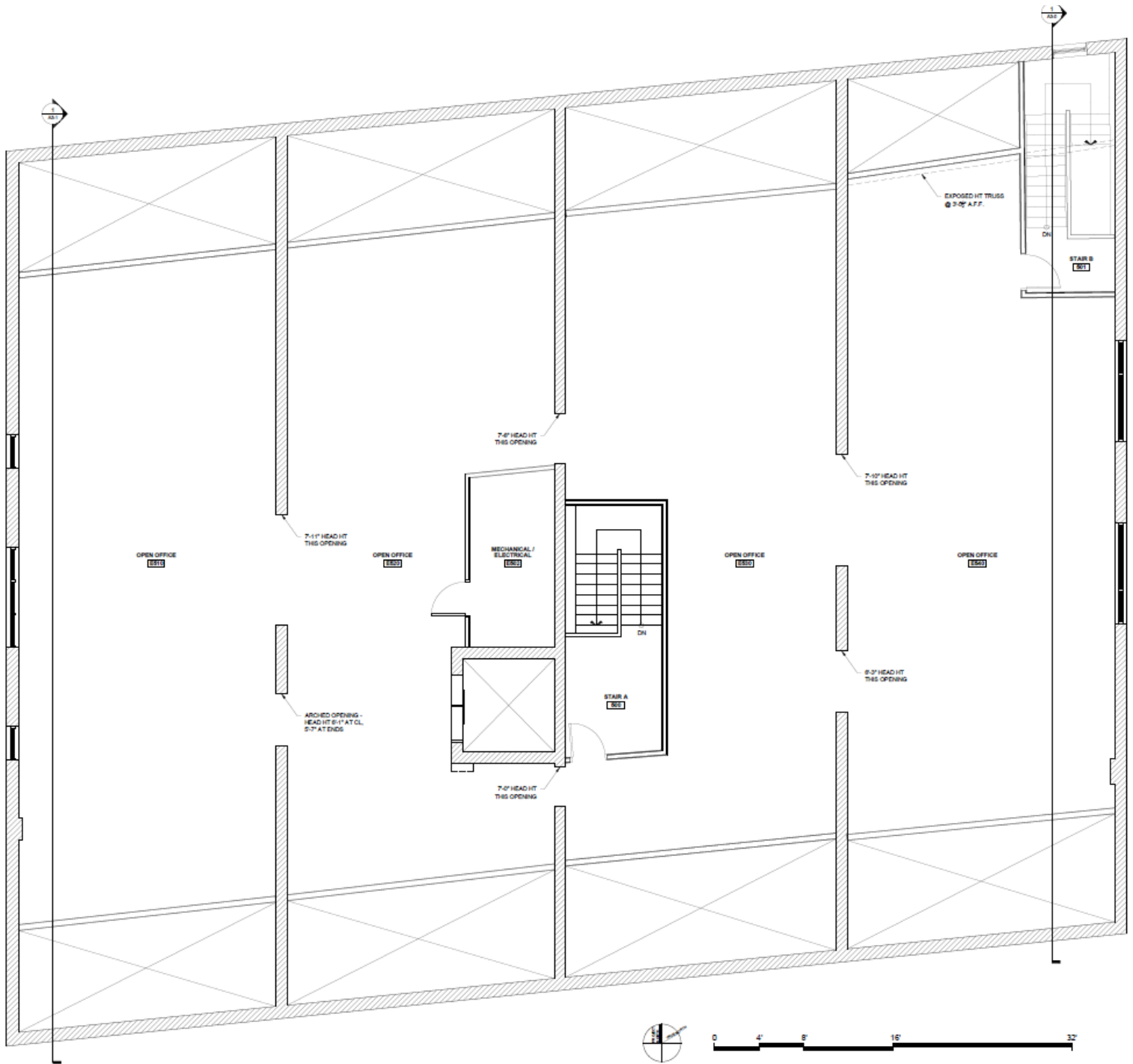
# FOURTH FLOOR PLAN

35 Commercial Street • Portland, ME



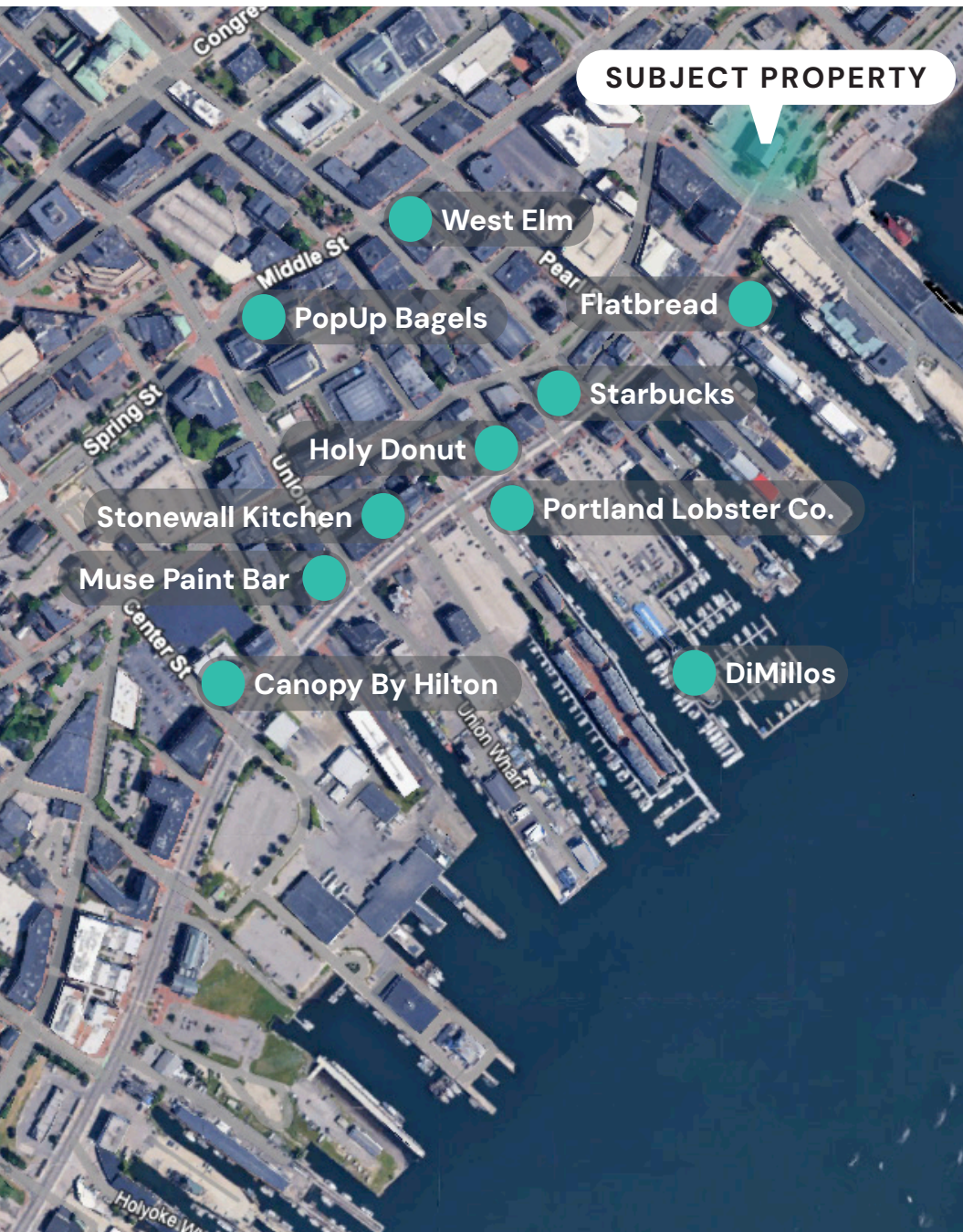
# FIFTH FLOOR PLAN

35 Commercial Street • Portland, ME



# LOCATION MAP

35 Commercial Street • Portland, ME



## NEARBY

### STAY



### DINE



### SHOP

west elm



This document has been prepared by Malone Commercial Brokers for advertising and general information only. Malone Commercial Brokers makes no guarantees, representations or warranties of any kind, expressed or implied, regarding, but not limited to, warranties of content, accuracy, and reliability. Any interested party should undertake their own inquiries as to the accuracy of the information. Malone Commercial Brokers excludes unequivocally all informed or implied terms, conditions and warranties arising out of this document and excludes all liability for loss and damages there from. All data is subject to change of price, error, omissions, other conditions or withdrawal without notice. Malone Commercial Brokers is acting as the Seller's/Lessor's agent in the marketing of this property.