

FOR SALE

INDUSTRIAL DEVELOPMENT SITES



*Lot lines are approximate

PROPERTY HIGHLIGHTS

- 0.79 - 2.88± acre sites ready for development with all utilities stubbed to site
- Access to Minot Avenue
- Close proximity to Maine Turnpike Exit 75
- Area businesses include Electrical Systems of Maine, US Army Reserves, Side By Each Brewing and Mac's Grill
- Sale Price: \$195,000 - \$585,000

FOR SALE | DEVELOPMENT SITES

0 MYSTIQUE WAY, 14 FLOWER LANE & 30 FLOWER LANE
AUBURN, MAINE 04210



PROPERTY DETAILS

0 MYSTIQUE WAY

14 FLOWER LANE

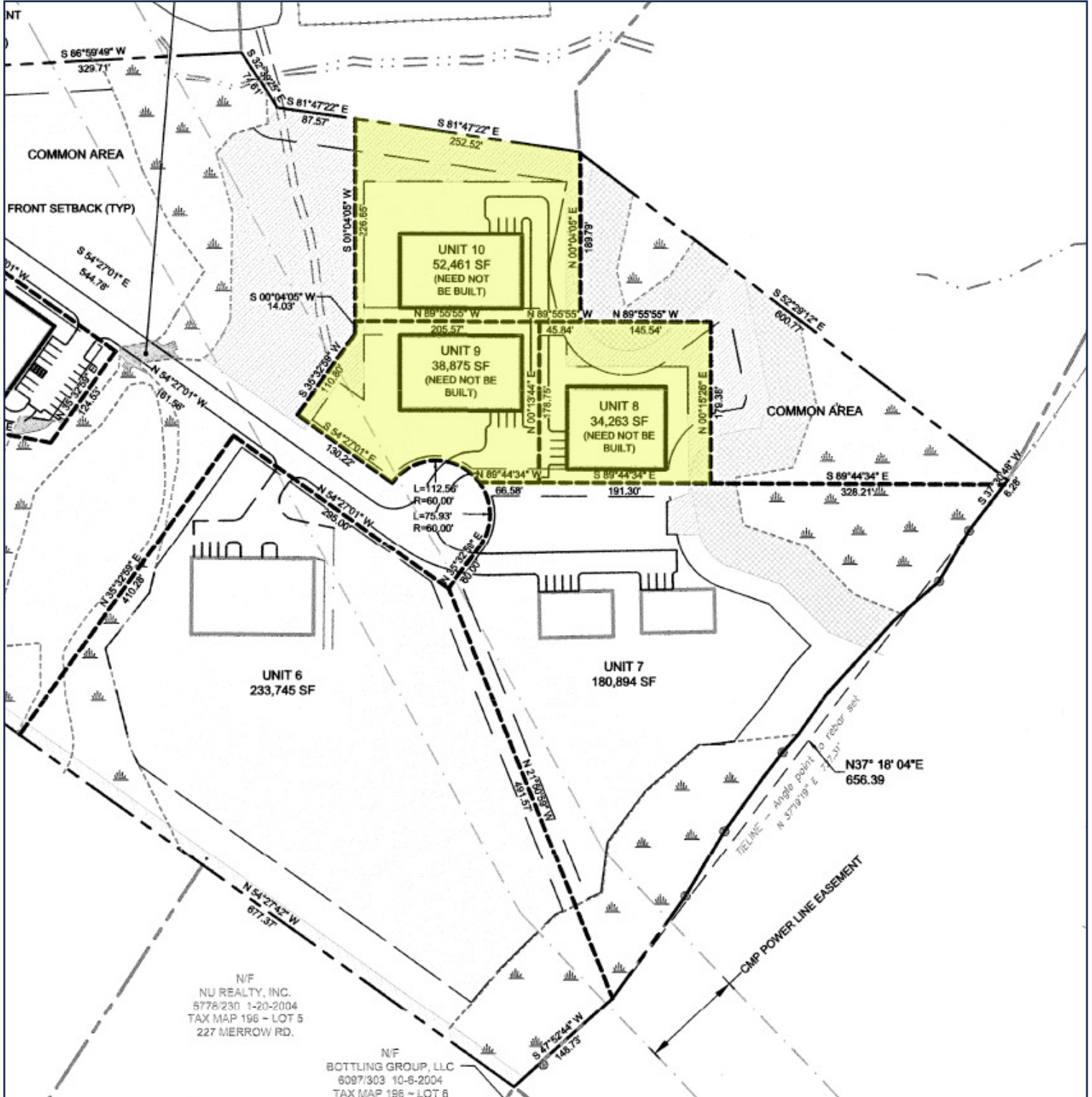
30 FLOWER LANE

PROPERTY OWNER	Mystique Way, LLC		
ASSESSOR'S REF	Map 206, Lot 058-008	Map 206, Lot 058-009	Map 206, Lot 058-010
BOOK/PAGE	53/95	53/95	53/95
DESCRIPTION	0.79± acres	0.89± acres	1.2± acres
UTILITIES	Public water/sewer, natural gas stubbed at site		
POTENTIAL BUILDING SIZE PER LOT	11,500± SF	11,500± SF	11,500± SF
ZONING	ID - Industrial	ID - Industrial	ID - Industrial
FRONTAGE	N/A	130'	N/A
ANNUAL TAXES	\$3,301.90	\$3,319.70	\$3,488.80
SALE PRICE	\$195,000	\$195,000	\$195,000
CONDO FEES*	\$96/month	\$96/month	\$96/month

* Road is owned by Mystique Way Condominium Association. All lots are part of the condominium association.



SITE PLAN (Complete Survey Available Upon Request)





CONTACT US



CHRIS PASZYC, CCIM, SIOR
MANAGING PARTNER, BROKER
+1 207 553 1709 T
+1 207 939 4147 C
CPASZYC@BOULOS.COM

©2025 The Boulos Company, Inc. All rights reserved. This information has been obtained from sources believed reliable but has not been verified for accuracy or completeness. You should conduct a careful, independent investigation of the property and verify all information. Any reliance on this information is solely at your own risk. The Boulos Company and The Boulos Company logo are service marks of The Boulos Company, Inc. All other marks displayed on this document are the property of their respective owners. Photos herein are the property of their respective owners. Use of these images without the express written consent of the owner is prohibited.