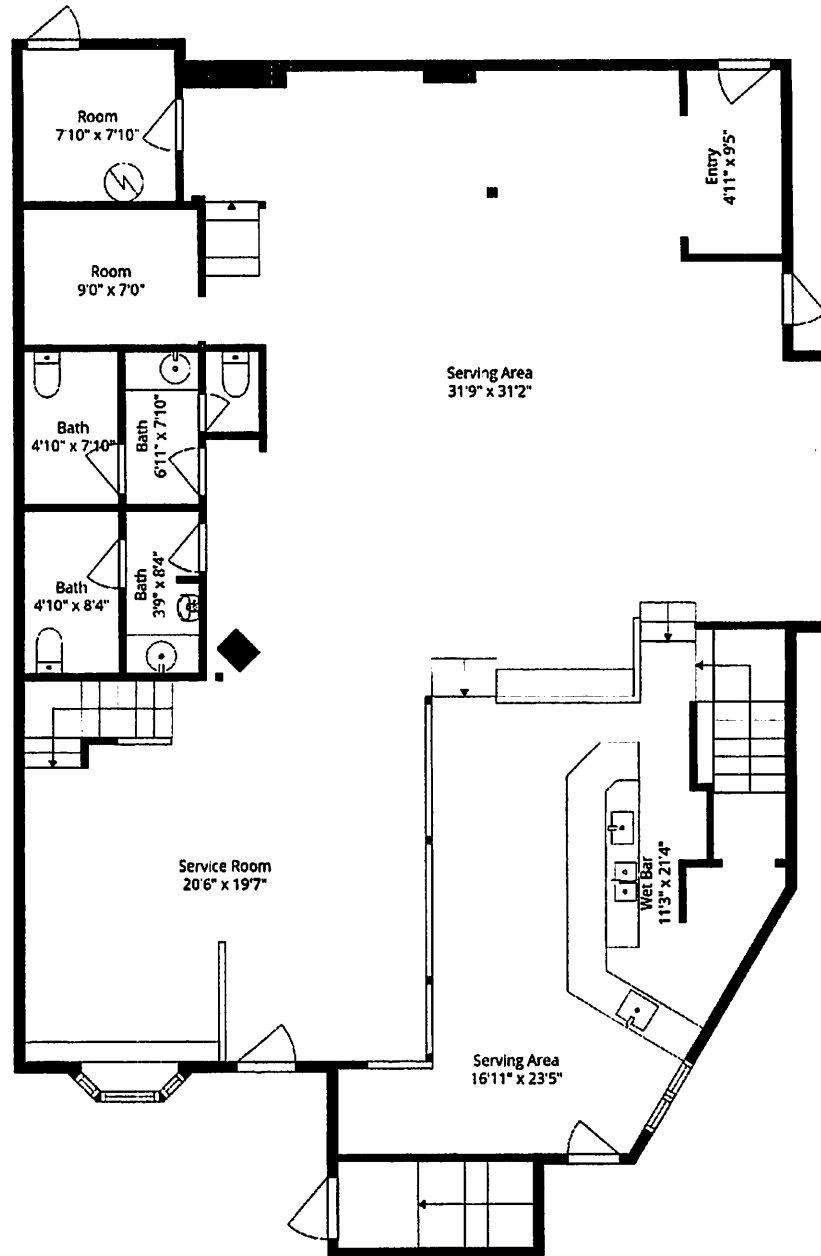


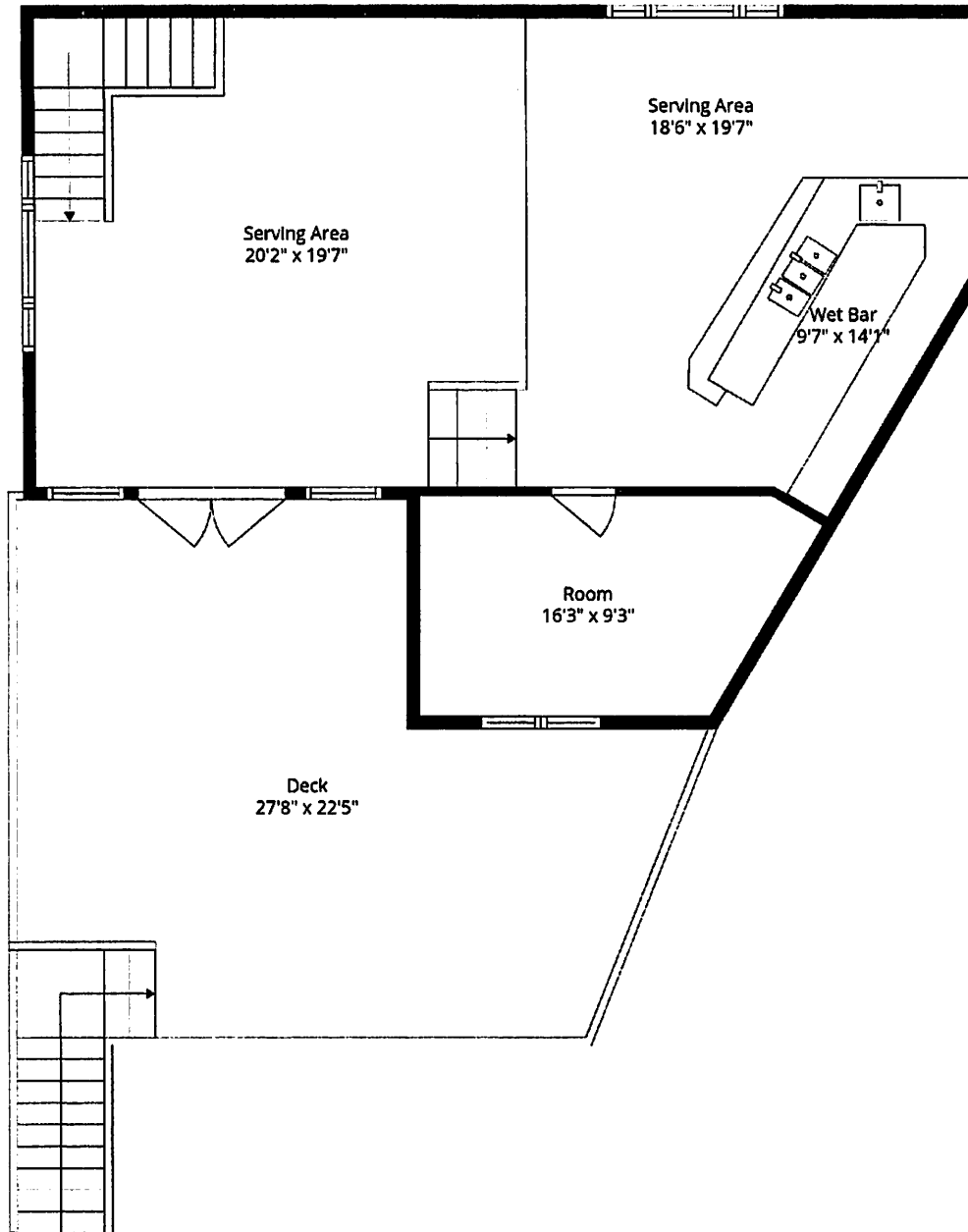
TOTAL: 3009 sq. ft

BELOW GRADE: 21 sq. ft, FLOOR 2: 2105 sq. ft, FLOOR 3: 883 sq. ft
EXCLUDED AREAS: BASEMENT: 429 sq. ft, UNDEFINED: 13 sq. ft, BAY WINDOW: 7 sq. ft,
DECK: 470 sq. ft, WALLS: 213 sq. ft

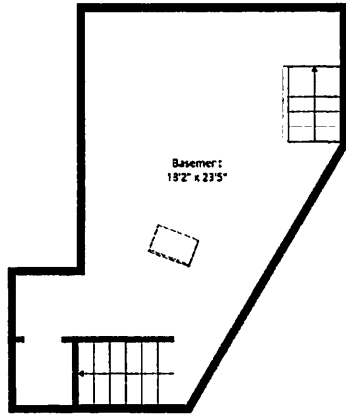


TOTAL: 3009 sq. ft

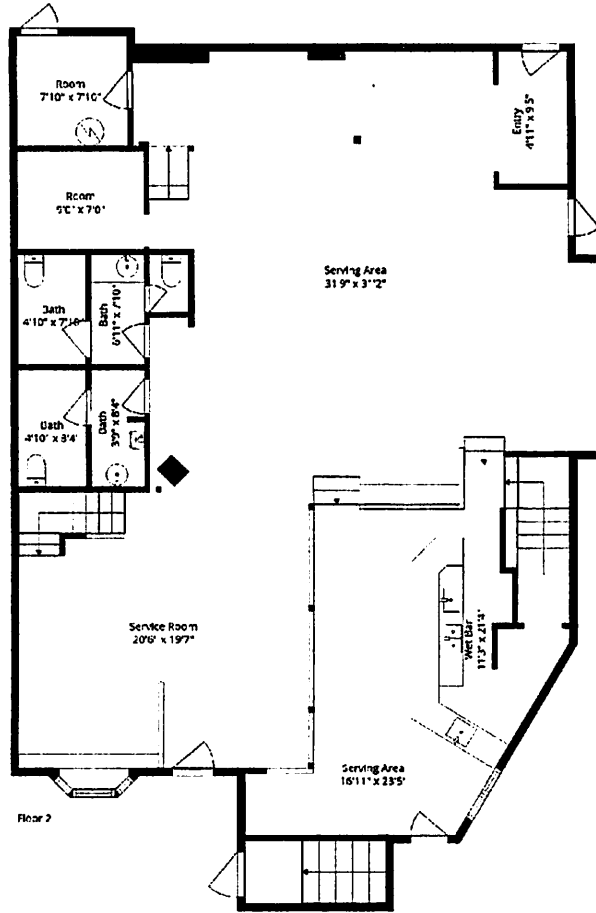
BELOW GRADE: 21 sq. ft, FLOOR 2: 2105 sq. ft, FLOOR 3: 883 sq. ft
EXCLUDED AREAS: BASEMENT: 429 sq. ft, UNDEFINED: 13 sq. ft, BAY WINDOW: 7 sq. ft,
DECK: 470 sq. ft, WALLS: 213 sq. ft



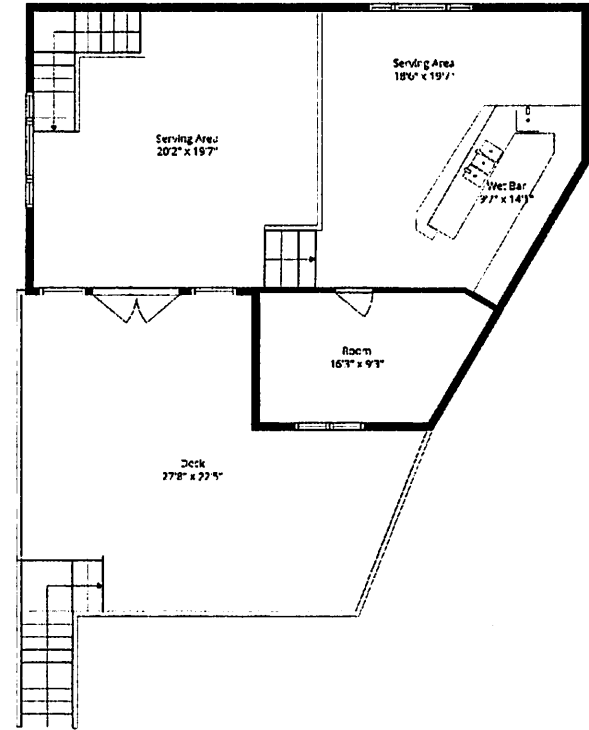
TOTAL: 3009 sq. ft
BELOW GRADE: 21 sq. ft, FLOOR 2: 2105 sq. ft, FLOOR 3: 883 sq. ft
EXCLUDED AREAS: BASEMENT: 429 sq. ft, UNDEFINED: 13 sq. ft, BAY WINDOW: 7 sq. ft,
DECK: 470 sq. ft, WALLS: 213 sq. ft



Floor 1



Floor 2



Floor 3

3,122
TOTAL: ~~3,122~~ sq. ft

plus 429 sq. ft. basement & 470 deck

BELOW GRADE: 21 sq. ft, FLOOR 2: 2105 sq. ft, FLOOR 3: 883 sq. ft
 EXCLUDED AREAS: BASEMENT: 429 sq. ft, UNDEFINED: 13 sq. ft, BAY WINDOW: 7 sq. ft,
 DECK: 470 sq. ft, WALLS: 213 sq. ft