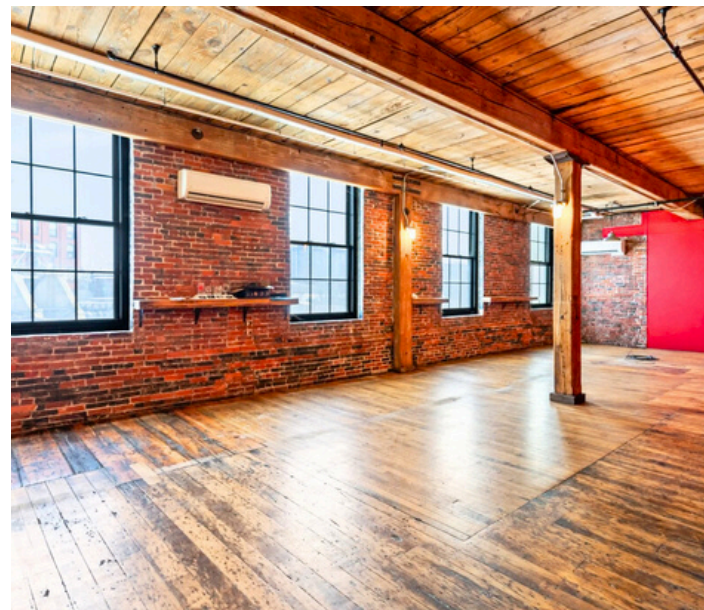




## Property Highlights

- 8,408± sf space right on the Riverfront in Biddeford
- Ideal for restaurant/bar and brewery operators, featuring a large bar area, brewery room, and built-in venting for a pizza oven
- Brewery and Kitchen Equipment can be included in lease
- Access to a shared 1,500 sf patio, directly in front of the unit
- Classic brick and beam mill finishes
- Lease Rate: \$8.00/SF NNN



**Owner:** Port Property Management

**Building Size:** 54,515± SF

**Available Space:** 8,408± sf

**Parking:** Shared on-site parking in front of space, public garage on Pearl St

**Sprinkler:** Yes, wet

**Signage:** Facade and window signage available

**HVAC:** Mini Splits (Heat Pumps)

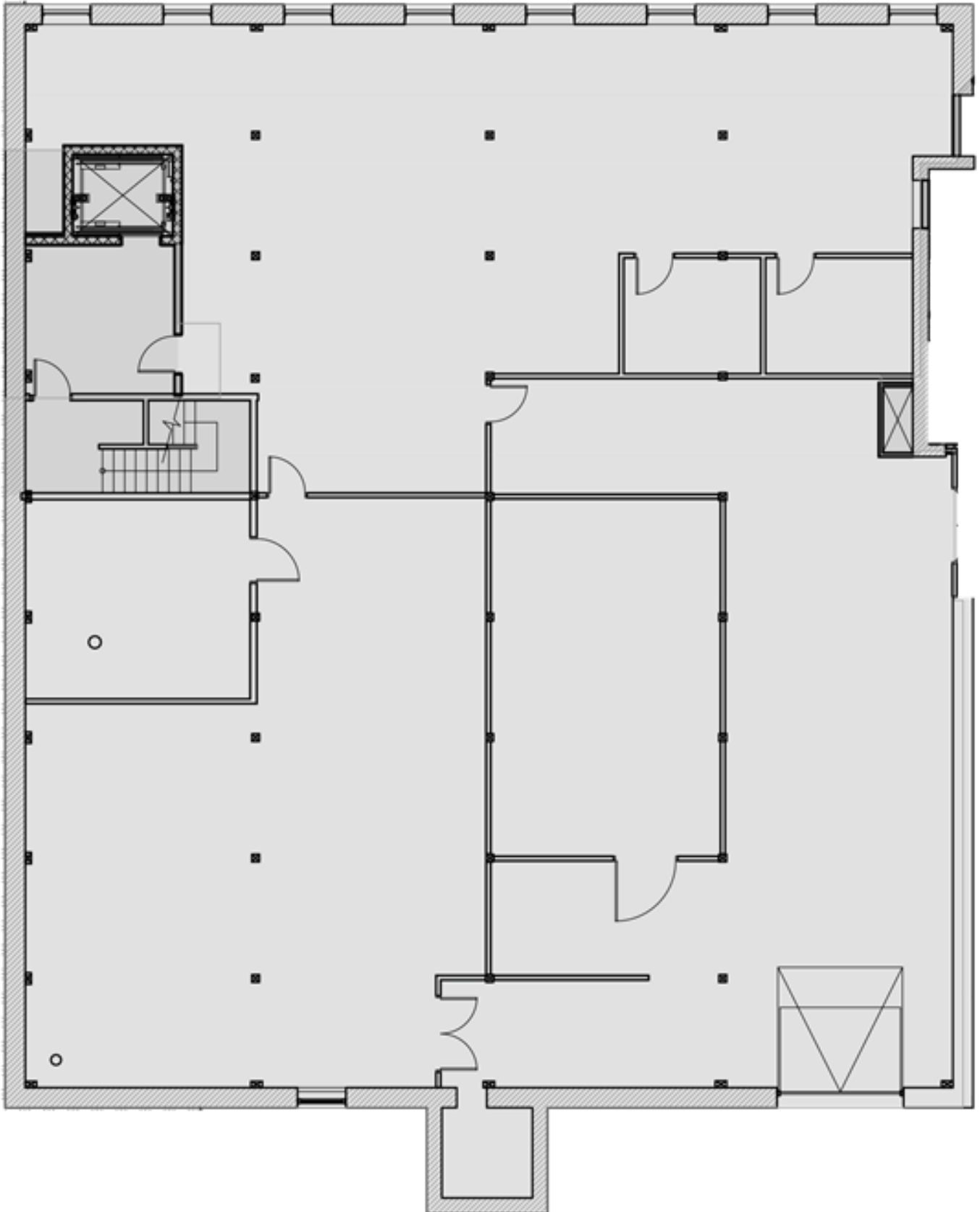
**Restrooms:** Yes

**Elevator:** Yes

**Lease Rate:** \$8.00/SF NNN

**NNN's:** \$5.00/SF







## CONTACT



### Peter Gwilym

Broker  
c: 207-272-4262  
o: 207-558-0901  
pgwilym@portacompany.com

This information has been obtained from sources believed reliable and is intended for informational use only. The information contained herein has not been verified for accuracy or completeness. It is recommended that prospective tenants and buyers conduct their own inspection of the property and verify all information. Any reliance on this information is solely at your own risk. Photos herein are the property of their respective owners. Use of these images without the express written consent of the owner is prohibited.

## PORTA & CO.

COMMERCIAL REAL ESTATE

30 Milk Street, Second Floor  
Portland, ME 04101  
207-747-1515  
www.portacompany.com