

**PORTA  
& CO.**

# For Lease: West End Office Suites

188 State Street | Portland, ME



## Property Highlights

- Individual Office Suites on the 3<sup>rd</sup> floor at the intersection of Congress and State St.
- Ample windows allow for impressive natural lighting and provide great views
- Parking is available in nearby Landlord owned lots
- Centrally located in Longfellow Square



**PORTA & CO.**

COMMERCIAL REAL ESTATE

30 Milk Street, Second Floor  
Portland, ME 04101  
207-747-1515  
[www.portacompany.com](http://www.portacompany.com)

**Owner:** Longfellow Square, LLC

---

**Building Size:** 15,200± SF

---

**Utilities:** Central heat & AC

---

**Parking:** Market Rate, in nearby Landlord lot

---

**Restrooms:** Yes, two (2) - In common

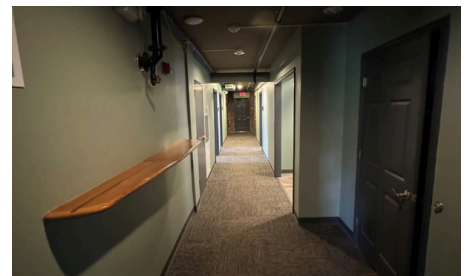
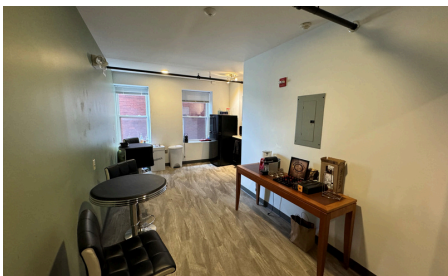
---

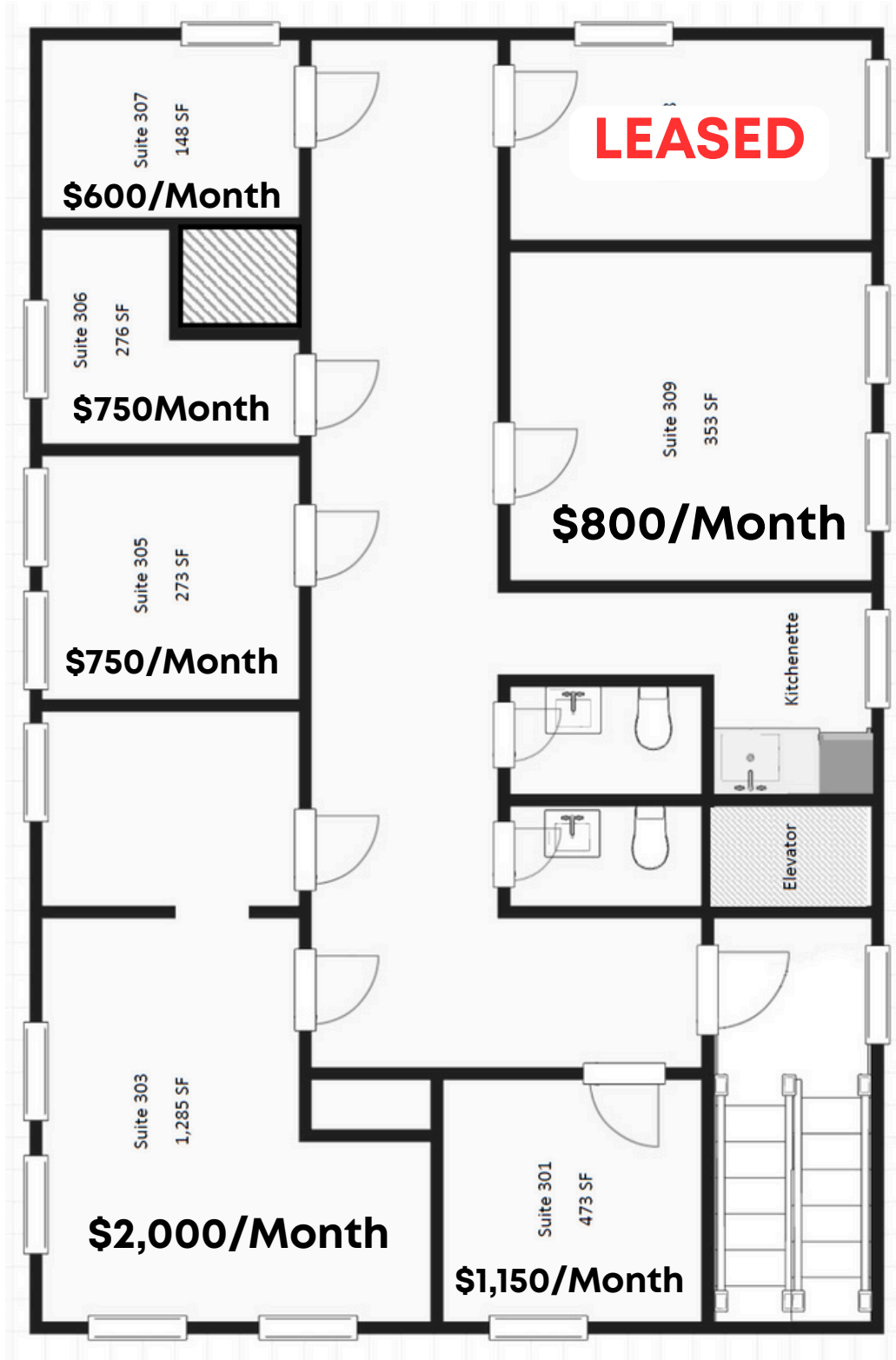
**Elevator(s):** Yes, one (1)

---

**Available Space(s):** Suite 301: 473± SF - \$1,150/month Gross  
Suite 303: 1,285± SF - \$2,000/month Gross  
Suite 305: 273± SF - \$750/month Gross  
Suite 306: 276± SF - \$750/month Gross  
Suite 307: 148± SF - \$600/month Gross  
Suite 309: 353± SF - \$800/month Gross

---





PORTA  
& CO.

Photos

188 State Street | Portland, ME



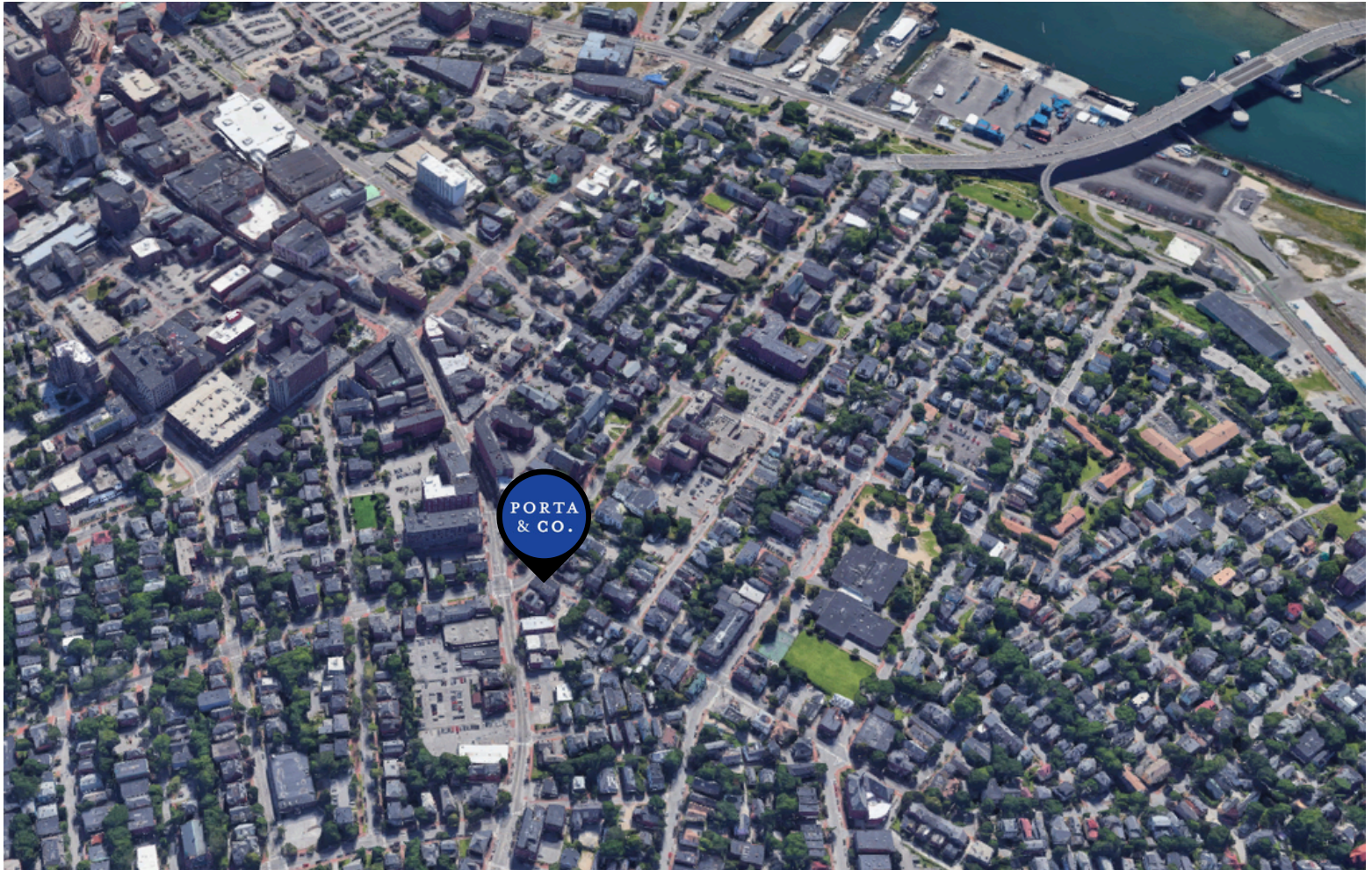
PORTA & CO. | 30 Milk Street, Second Floor | Portland, ME 04101 | (207)-747-1515

[www.portacompany.com](http://www.portacompany.com)

**PORTA  
& CO.**

# Property Aerial

188 State Street | Portland, ME



## CONTACT



**Peter Gwilym**

Broker  
c: 207-272-4262  
o: 207-558-0901  
pgwilym@portacompany.com



**Emmett Peoples**

Associate Broker  
c: 207-400-4939  
o: 207-747-1515  
epeoples@portacompany.com

This information has been obtained from sources believed reliable and is intended for informational use only. The information contained herein has not been verified for accuracy or completeness. It is recommended that prospective tenants and buyers conduct their own inspection of the property and verify all information. Any reliance on this information is solely at your own risk. Photos herein are the property of their respective owners. Use of these images without the express written consent of the owner is prohibited.

**PORTA & CO.**

COMMERCIAL REAL ESTATE

30 Milk Street, Second Floor  
Portland, ME 04101  
207-747-1515  
www.portacompany.com