



For Lease

Landmark Crossing

Andrew Robbins

Senior Associate
+1 857 366 1891
andrew.robbs@colliers.com

Property listed
and managed by



210 Commerce Way, Suite 350
Portsmouth, NH 03801
+1 603 433 7100
colliersnh.com

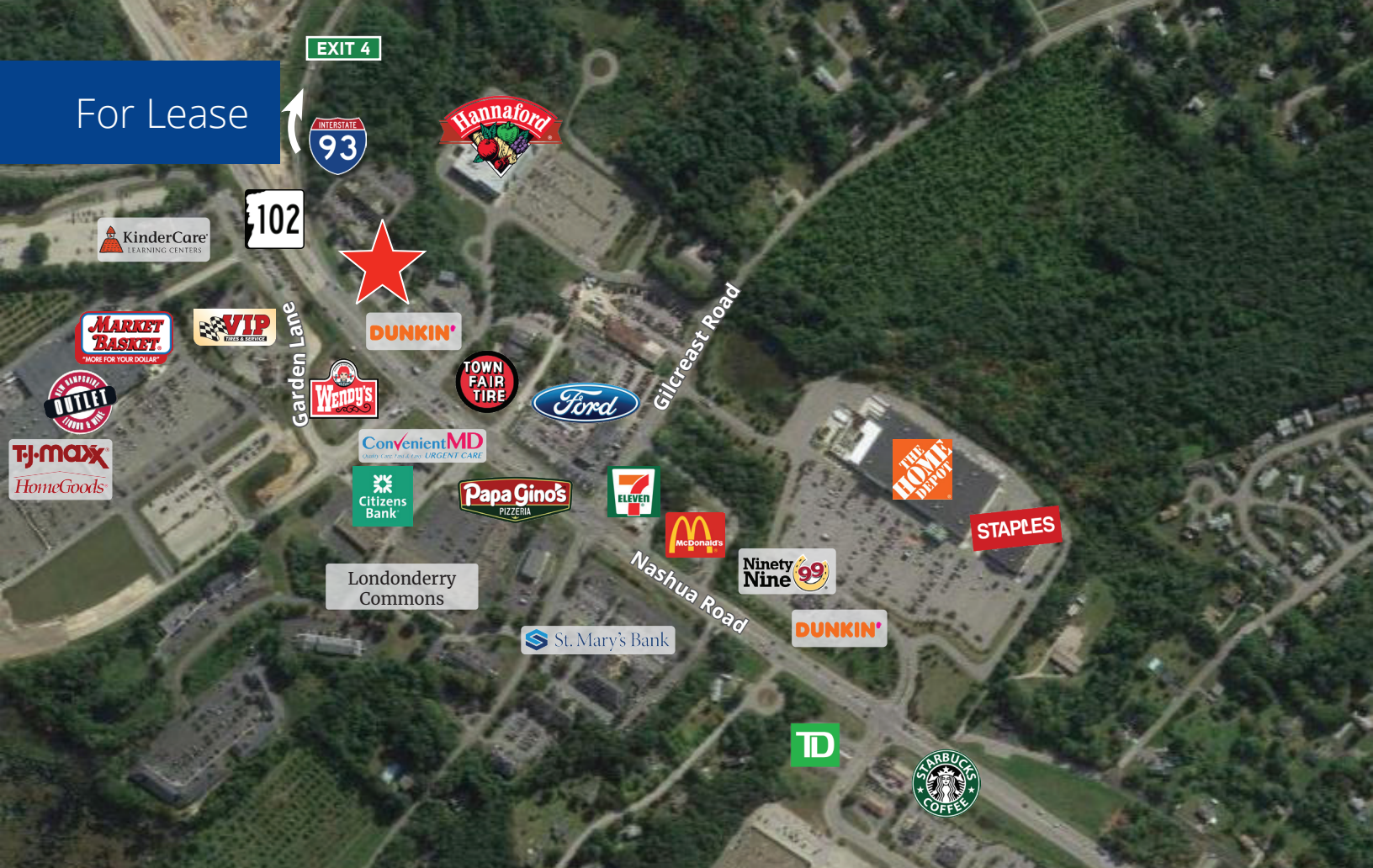
25 Nashua Road Londonderry, NH

Property Highlights

- One office space remains available for lease at Landmark Crossing in Londonderry, NH
- Unit A-5 is 948± SF and consists of reception, waiting area, 3 offices, and a restroom
- Unit A-6 is 1,200± SF and consists of reception, 4 offices, kitchenette, and 3 restrooms
- Close to popular retailers such as Home Depot, Starbucks, Staples, Dunkin', Market Basket, Hannaford, St. Mary's Bank, NH Liquor & Wine Outlet, and more
- Prominent location on Route 102/Nashua Road with easy access to I-93

Information herein has been obtained from sources deemed reliable, however its accuracy cannot be guaranteed by Colliers International | New Hampshire & Maine. The user is required to conduct their own due diligence and verification. Colliers International | New Hampshire & Maine is independently owned and operated.

For Lease



Specifications

Address:	25 Nashua Road
Location:	Londonderry, NH 03053
Building Type:	Office
Year Built:	1986
Total Building SF:	28,929±
Available SF:	Unit A-5: 948± Unit A-6: 1,200±
Road Frontage:	268'± on Nashua Road
Utilities:	Municipal water & sewer Propane heat
Zoning:	Commercial Business
Parking:	Ample
Lease Rate:	\$15.00 modified gross

5 Mile Demographics



Avg HH Income
\$151,999



of Households
24,975



Population
65,457

Source: U.S. Census Bureau, Census 2010. Esri forecasts for 2024.

Contact us:

Andrew Robbins

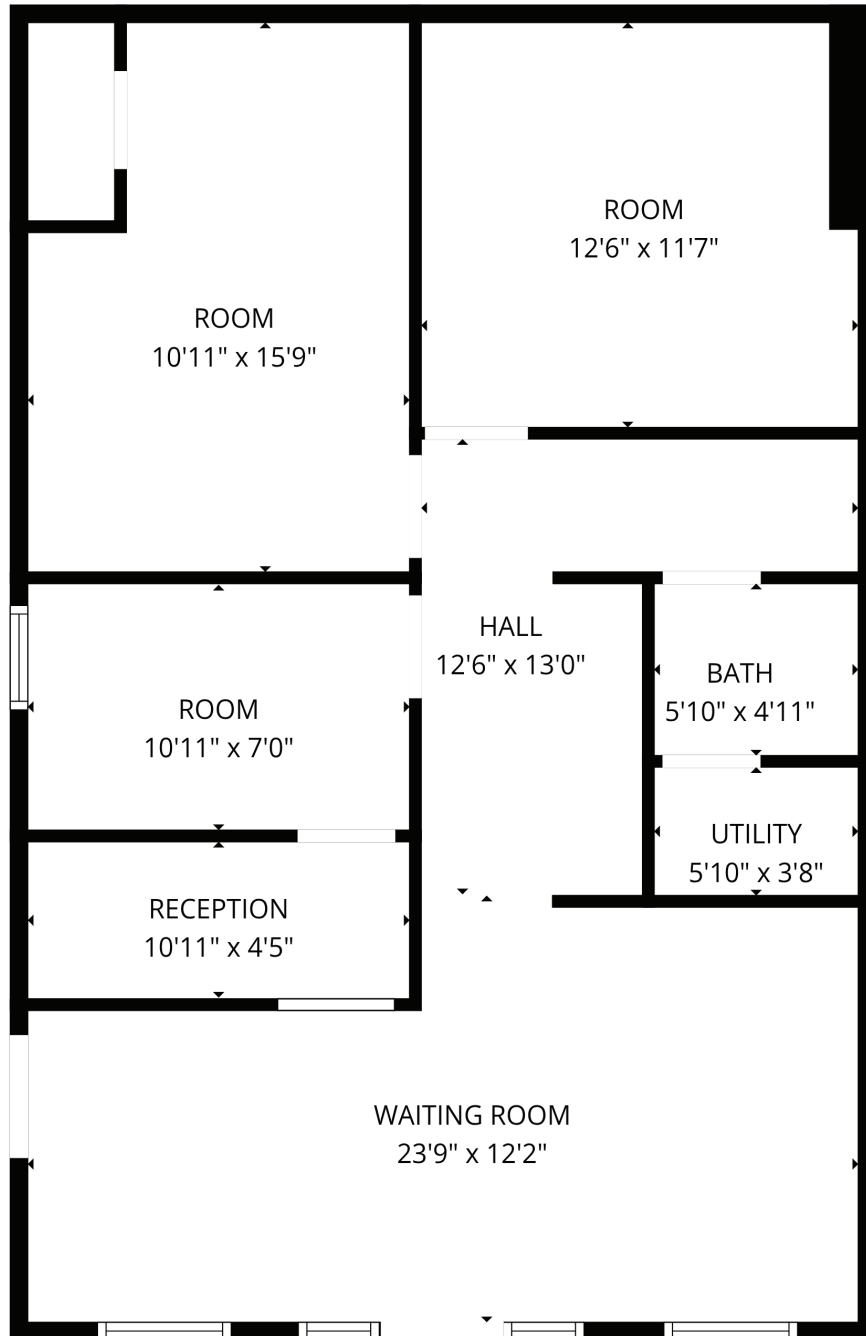
Senior Associate
+1 857 366 1891
andrew.robbs@colliers.com

Property listed
and managed by

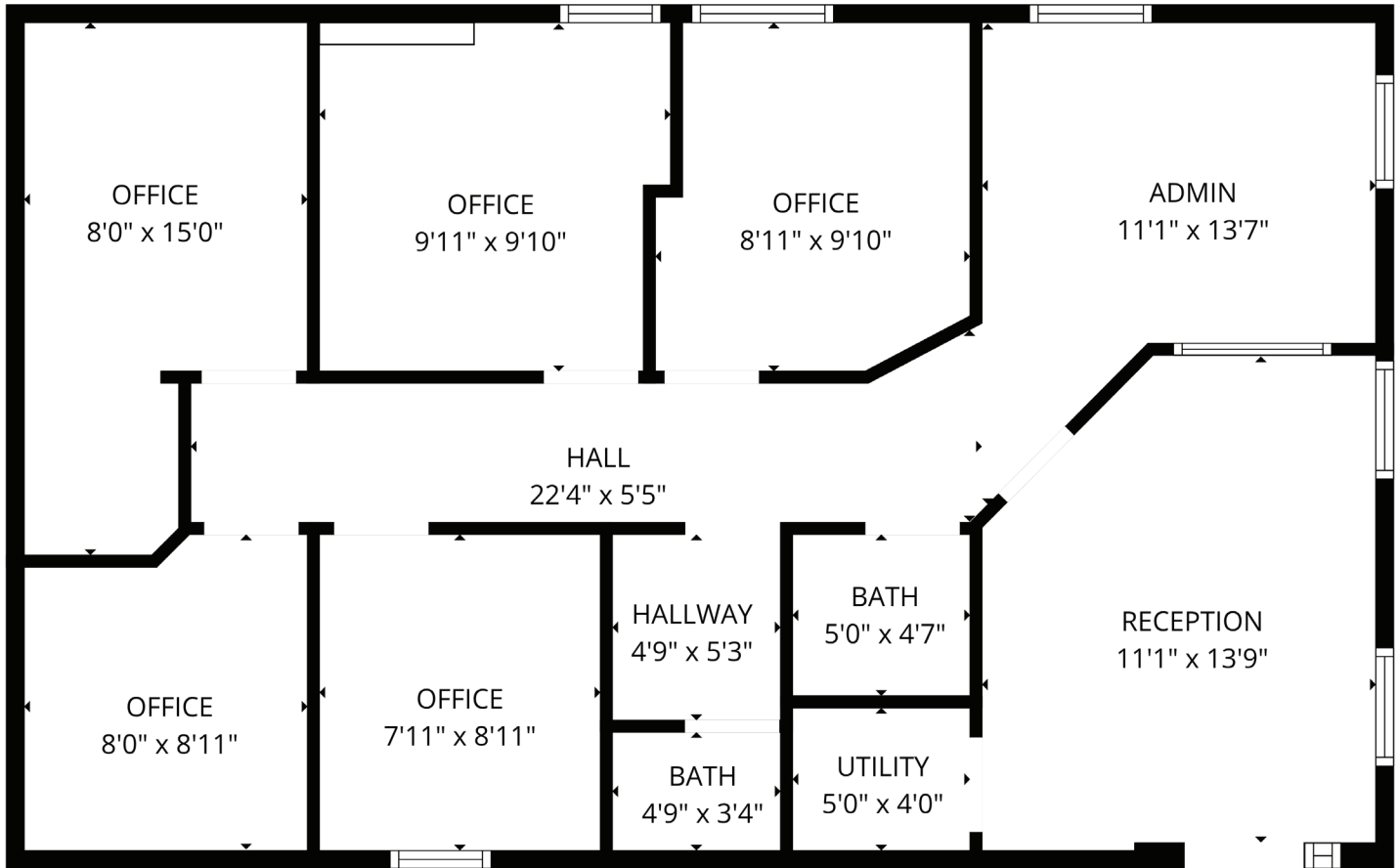


210 Commerce Way, Suite 350
Portsmouth, NH 03801
+1 603 433 7100
colliersnh.com

Unit A-5 Floor Plan



Unit A-6 Floor Plan



FLOOR PLAN CREATED BY CUBICASA APP. MEASUREMENTS DEEMED HIGHLY RELIABLE BUT NOT GUARANTEED.