



Property Highlights

- 1,680± SF of two story stand alone office space with private offices, open work area, kitchenette, basement storage and ADA accessible 1st floor
- Ample in-common surface parking
- 0.8 miles to the State House and in close vicinity to establishments in Downtown Hallowell and Augusta
- Professionally maintained at a budget friendly "all-inclusive" rate
- Join other businesses, including Maine Community College System, Constellation Health Services, Lawson Property Management, Maine Child Ombudsman, and Maine Children's Alliance
- Lease Rate: \$2,700/month Gross



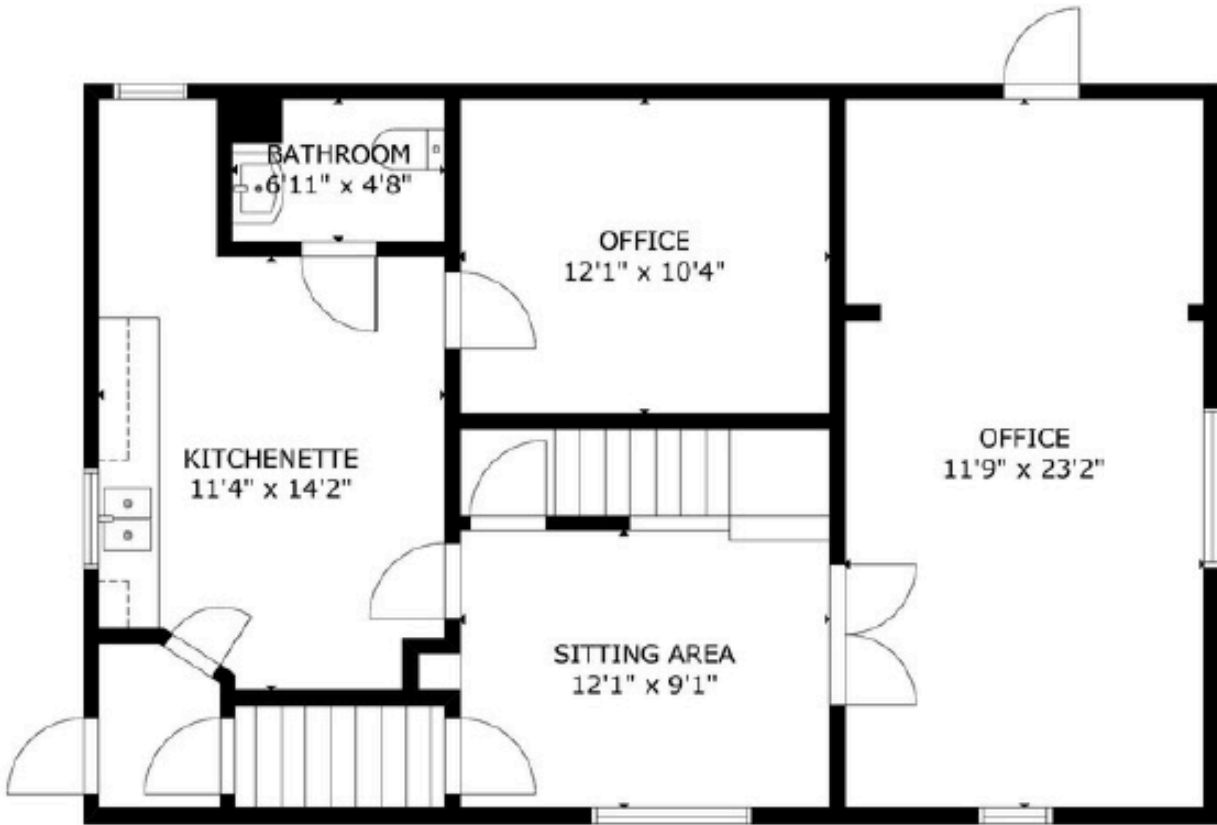
Property Address:	331 State Street, Augusta, Maine
Owner:	Parkman, LLC
Map/Lot:	31 / 42
Land Area:	0.90± Acres
Building Size:	1,680± SF Total
Suite Size:	1,680± SF
Suite Layout:	ADA ramp Access- Four private offices, bathrooms, kitchenette, conference room and waiting area.
Parking:	Approx. 42 Spaces, On Site, Paved
Zoning:	CC - Regional Business & RB1
Sprinkler:	N/A
HVAC:	Baseboard heat
Lease Rate:	\$2,700/month Gross



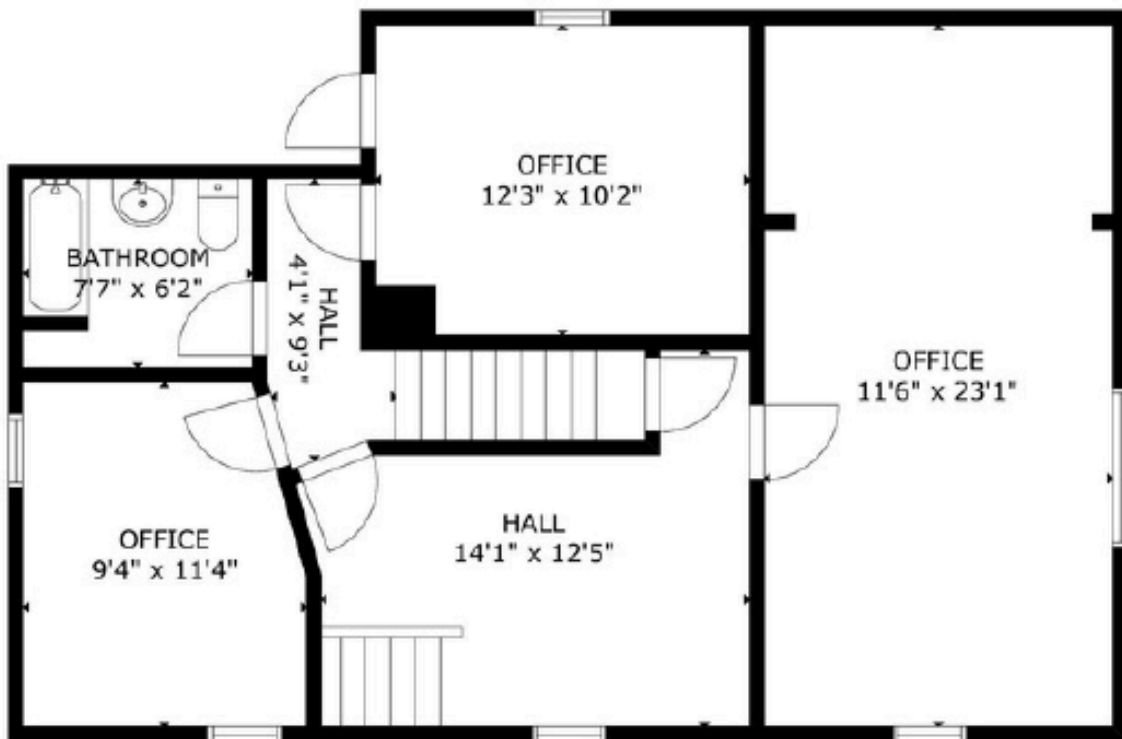
PORTA
& CO.

Photos

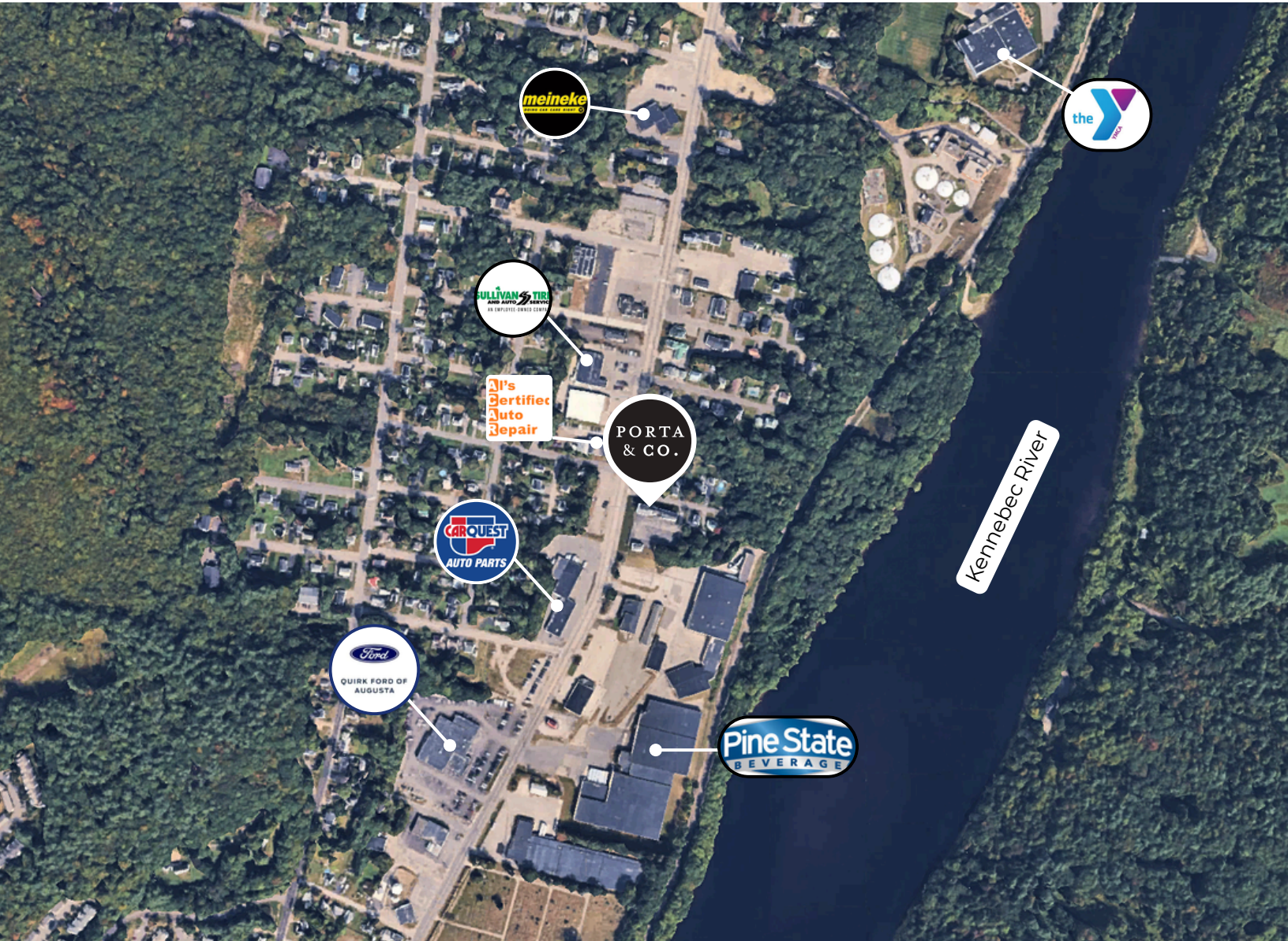
331 State Street | Augusta, ME



OUT BUILDING FIRST FLOOR



OUT BUILDING 2ND FLOOR



CONTACT



Tim Millett

Broker

C: 207-713-6995

O: 207-558-0893

tmillett@portacompany.com

This information has been obtained from sources believed reliable and is intended for informational use only. The information contained herein has not been verified for accuracy or completeness. It is recommended that prospective tenants and buyers conduct their own inspection of the property and verify all information. Any reliance on this information is solely at your own risk. Photos herein are the property of their respective owners. Use of these images without the express written consent of the owner is prohibited.