

FOR LEASE • RETAIL CONDO

146 Middle Street • Portland, ME



2,787± SF RETAIL SPACE

- Located on the corner of Middle Street and Pearl Street with high visibility
- Layout consists of front end retail area with private office and back end shop, restroom and private office
- Middle Street is home to downtown Portland's national retail corridor

LEASE RATE: \$50.00/SF NNN



Joe Malone, CCIM
O 207.773.2554
C 207.233.8000
Joe@malonecb.com



Luke Malone
O 207.939.0155
C 207.358.0475
Luke@malonecb.com



PROPERTY SUMMARY

146 Middle Street • Portland, ME



Site Info

OWNER:	Peg Realty LLC
DEED:	Book 33316, Page 144
ASSESSOR:	Map 29, Block A, Lot 1B
SIGNAGE:	On building
ZONING:	B-3 (Downtown Business)



Building Info

CONDO SIZE:	2,787± SF
YEAR BUILT:	1900
CONSTRUCTION:	Masonry
FLOORING:	Carpet & tile
CEILING HEIGHT:	12-15'±
HVAC:	Forced hot air & central AC
UTILITIES:	Municipal water/sewer
RESTROOM:	2
SPRINKLER:	Wet system
ELEVATOR:	Yes
NNN EXPENSES:	\$7.86/SF



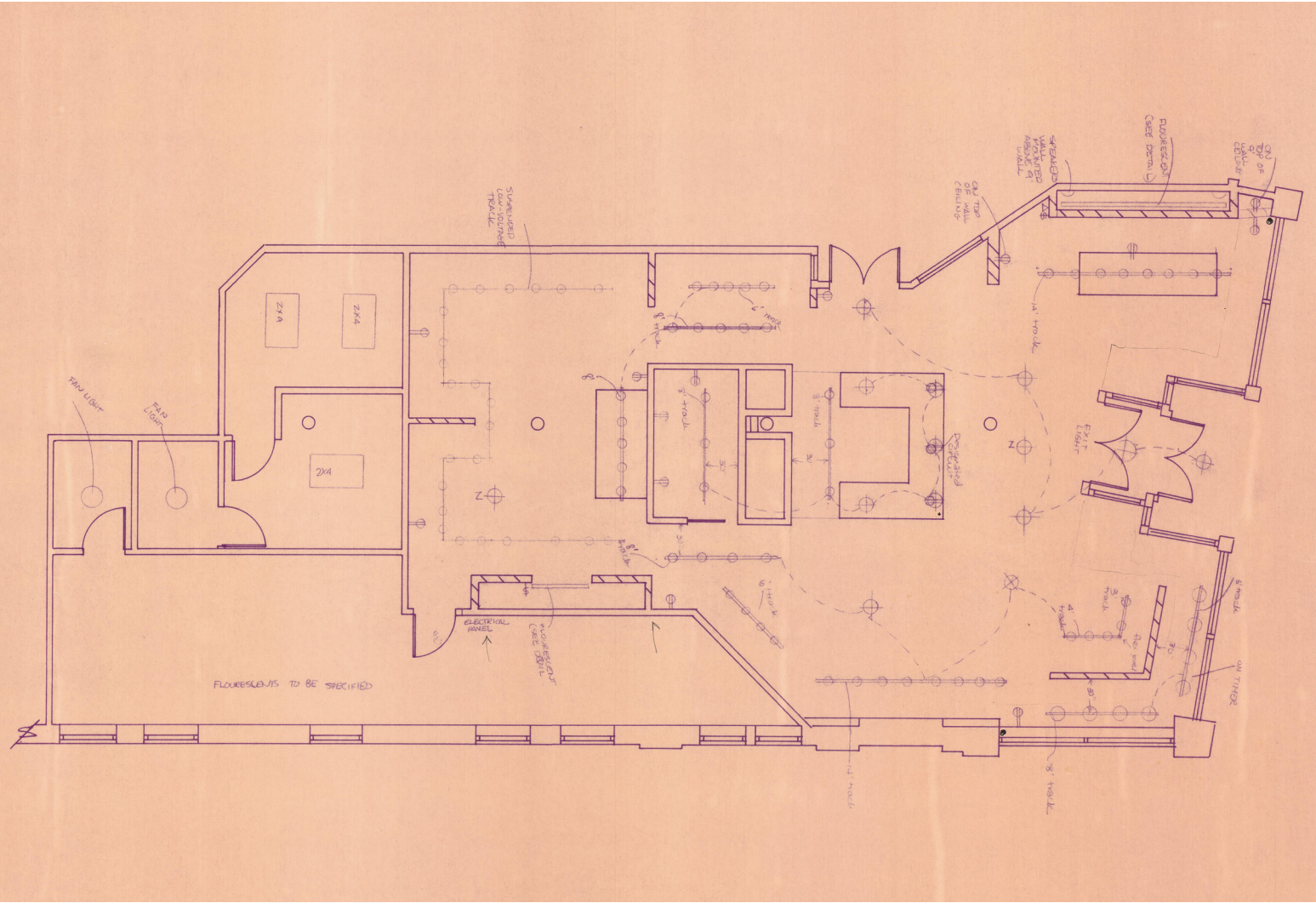
PHOTOS

146 Middle Street • Portland, ME



FLOOR PLAN

146 Middle Street • Portland, ME



LOCATION MAP

146 Middle Street • Portland, ME



This document has been prepared by Malone Commercial Brokers for advertising and general information only. Malone Commercial Brokers makes no guarantees, representations or warranties of any kind, expressed or implied, regarding, but not limited to, warranties of content, accuracy, and reliability. Any interested party should undertake their own inquiries as to the accuracy of the information. Malone Commercial Brokers excludes unequivocally all informed or implied terms, conditions and warranties arising out of this document and excludes all liability for loss and damages there from. All data is subject to change of price, error, omissions, other conditions or withdrawal without notice. Malone Commercial Brokers is acting as the Seller's/Lessor's agent in the marketing of this property.