

**PORTA
& CO.**

For Lease | Portland Office Suites

188 State Street | Portland, ME



Property Highlights

- Downtown Portland Office Suites for lease
- Shared kitchenette, waiting area, conference room and restrooms
- Easily accessible from I-295
- Centrally located in Longfellow Square
- Parking at market rates
- Ample windows allow for impressive natural lighting and views overlooking State Street



PORTA & CO.

COMMERCIAL REAL ESTATE

30 Milk Street, Second Floor
Portland, ME 04101
207-747-1515
www.portacompany.com

Owner: Longfellow Square LLC

Building Size: 15,200± SF

Heat: Forced Hot Air

A/C: Central

Elevator: Yes (1)

Parking: Surface Parking available at Market Rates

Utilities: Included in monthly rent

Internet: Tenant Responsibility

Available Spaces:

- ~~**LEASED** Suite 201: 465± SF - \$1,250/month Gross~~
- Suite 202: 650± SF - \$1,350/month Gross
- Suite 203: 950± SF - \$2,000/month Gross
- Suite 204: 658± SF - \$1,500/month Gross
- ~~**LEASED** Suite 402: 98± SF - \$450/month Gross~~
- ~~**LEASED** Suite 405: 138± SF - \$450/month Gross~~
- Suite 406: 132± SF - \$450/month Gross
- Suite 411: 374± SF - \$925/month Gross

Suite 201: 465± SF

Lease Rate: \$1,250/month Gross

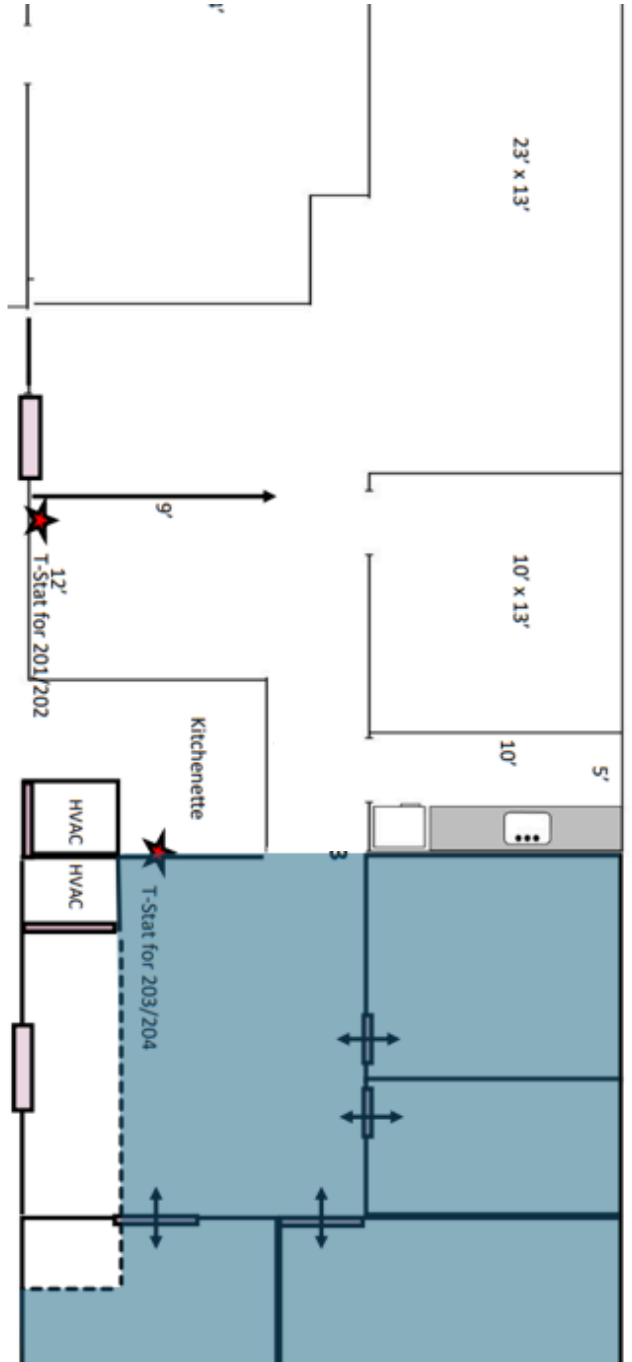
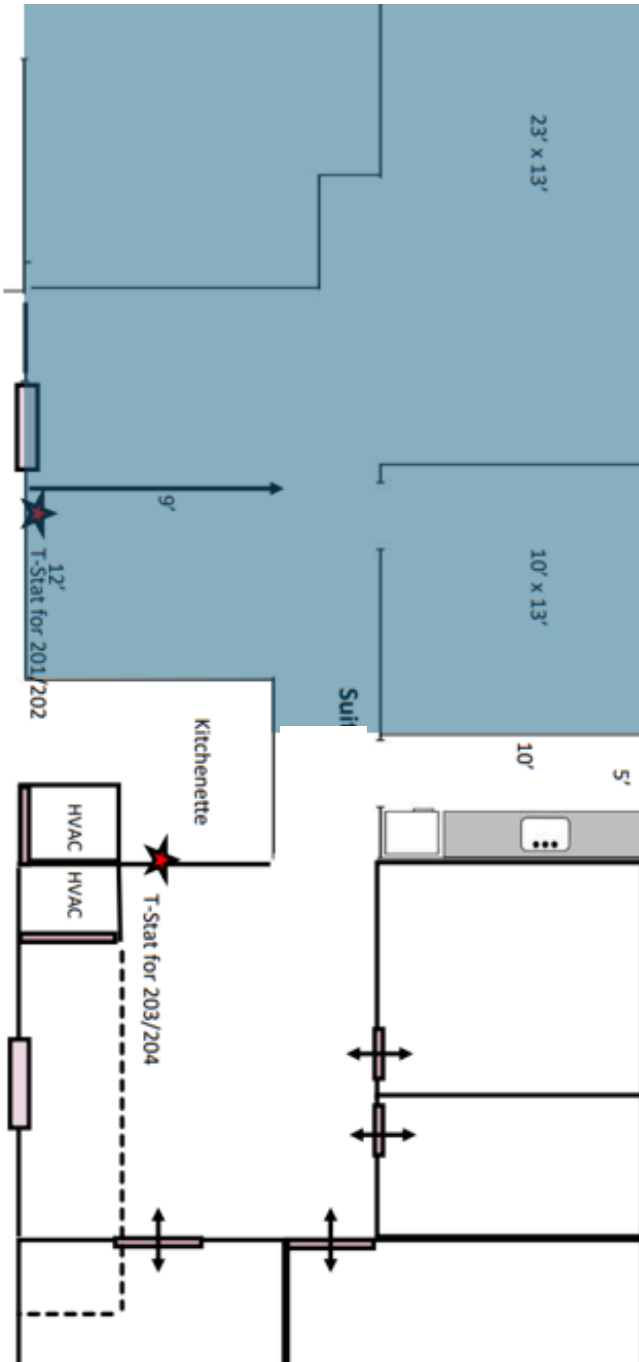


Suite 202: 650± SF

Suite 203: 950± SF

Lease Rate: \$1,350/month Gross

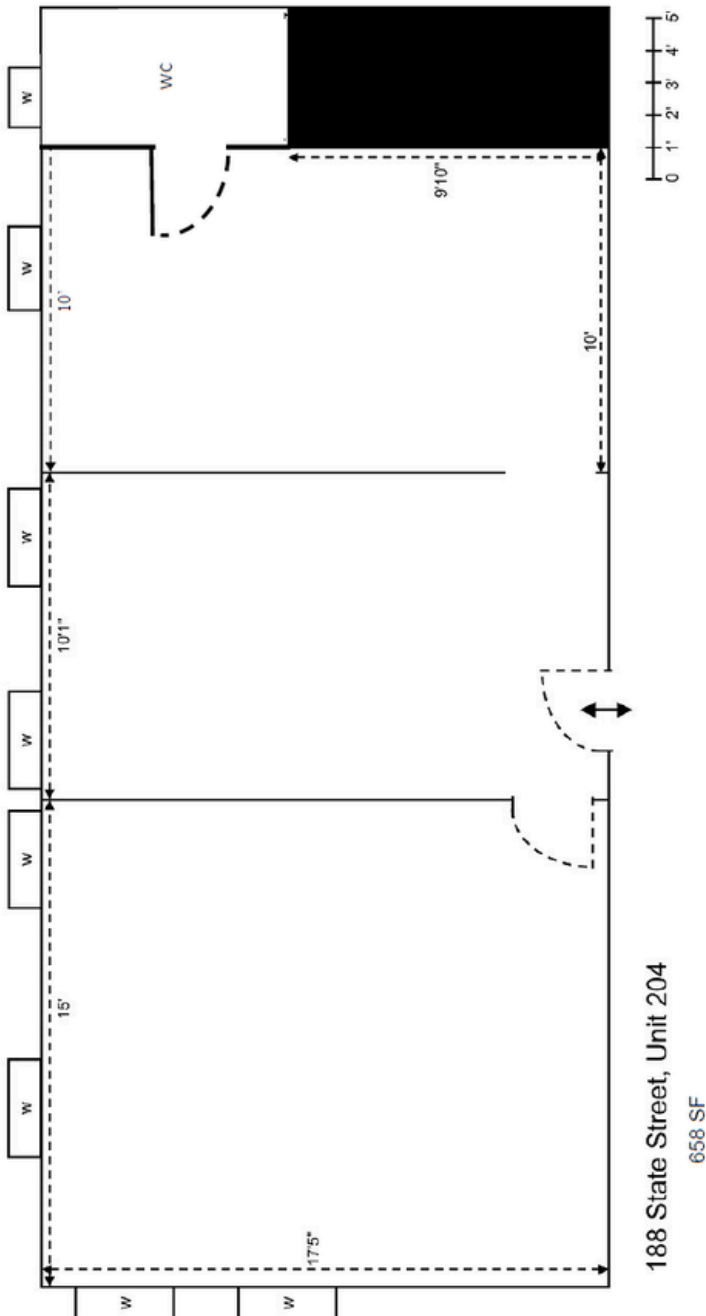
Lease Rate: \$2,000/month Gross



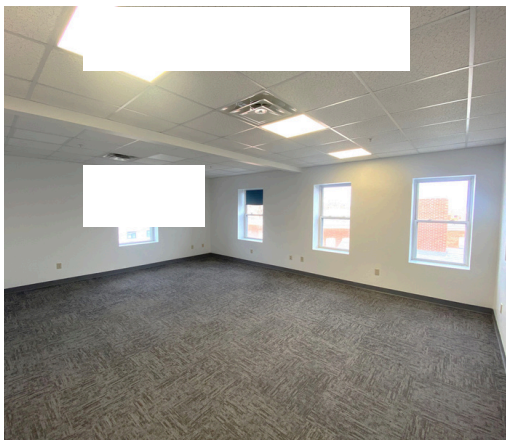
Suite 204: 658± SF

Lease Rate: \$1,500/month Gross

Date Available: 5/1/2025



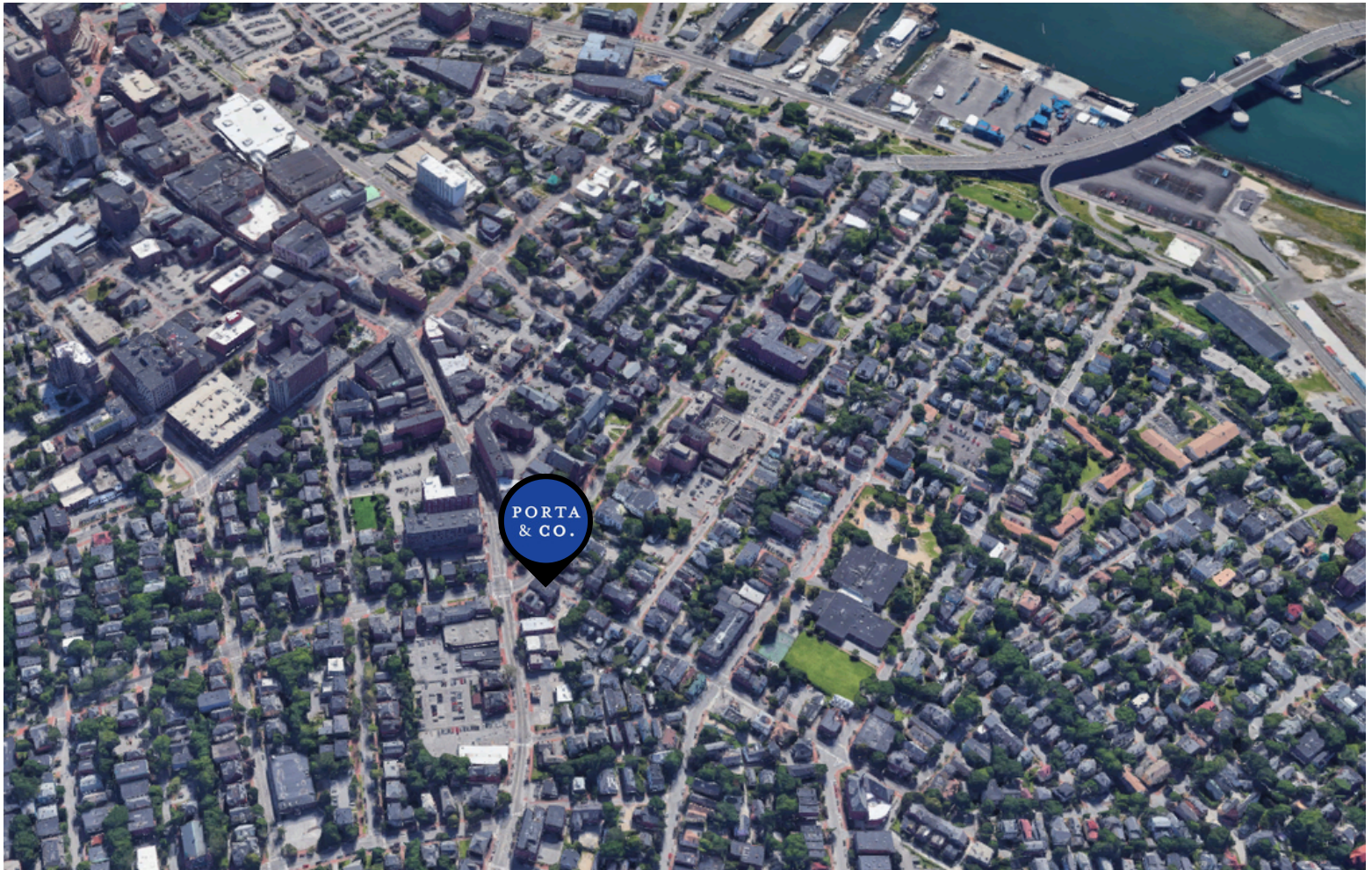
Suite:	SF/Rent:	Date Available:
402	98 SF \$450/month Gross	5/1/2025
405	138 SF \$450/month Gross	5/1/2025
406	132 SF \$450/month Gross	4/30/2026
411	378 SF \$925/month Gross	Immediately



**PORTA
& CO.**

Property Aerial

188 State Street | Portland, ME



CONTACT



Peter Gwilym

Broker
c: 207-272-4262
o: 207-558-0901
pgwilym@portacompany.com



Emmett Peoples

Associate Broker
c: 207-400-4939
o: 207-747-1515
epeoples@portacompany.com

This information has been obtained from sources believed reliable and is intended for informational use only. The information contained herein has not been verified for accuracy or completeness. It is recommended that prospective tenants and buyers conduct their own inspection of the property and verify all information. Any reliance on this information is solely at your own risk. Photos herein are the property of their respective owners. Use of these images without the express written consent of the owner is prohibited.

PORTA & CO.

COMMERCIAL REAL ESTATE

30 Milk Street, Second Floor
Portland, ME 04101
207-747-1515
www.portacompany.com