



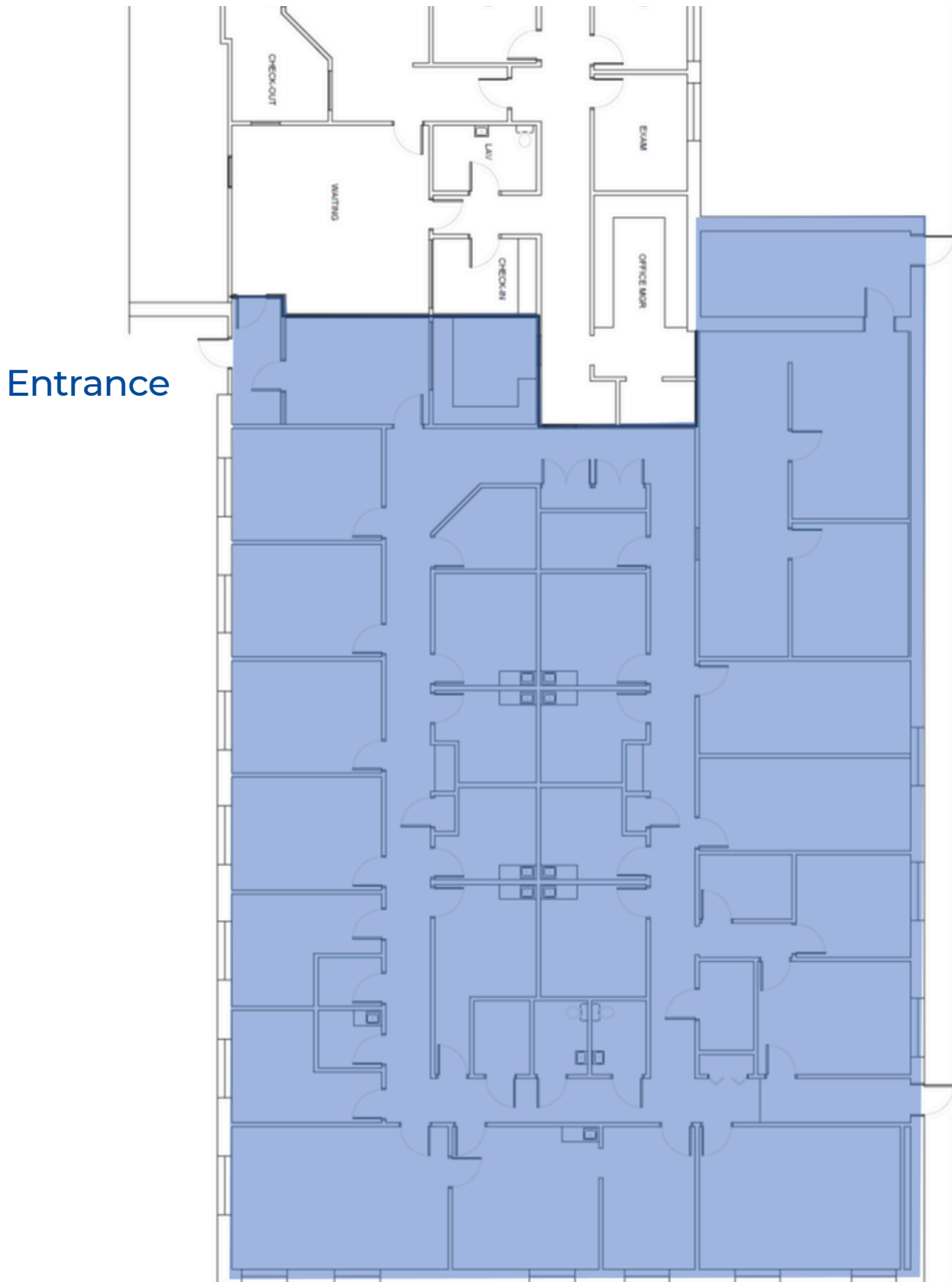
Property Highlights

- 6,000± SF - 11,000± SF Class A medical office space
- Turnkey with exam rooms, operating room, kitchenettes and more
- Join Nephrology Associates of Central Maine and Central Maine Therapy Services
- Average daily traffic count of 23,230
- Free dedicated parking on surface lots
- Lease Rate : \$17.00/SF NNN



Owner	InterUrban, LLC
Assessors Reference	Map 207, Lot 046
Building Size	36,600± SF
Parking	Handicapped on-site and free dedicated parking
Available Space	First Floor- 8,007± SF (Suite 4) First Floor- 6,000± SF (Suite 3) Second Floor- 11,000± SF (Suite 1)
Signage	Building Mounted & Pylon
Elevator	Yes
Utilities	Municipal water/sewer
Sprinkler	Wet system with hard-wired fire/smoke detectors and emergency lighting
Zoning	CV- Centreville District
Building Tenants	Central Maine Gastroenterology Central Maine Therapy Services & Gastroenterology Nephrology Associates of Central Maine
CAM Fee	\$2,800/month includes water/sewer, excludes taxes
Lease Rate	\$17.00/SF NNN





Bates Street

PORTA
& CO.

Dedicated Parking Aerial

77 Bates St, Lewiston, ME 04240



CONTACT



Tim Millett

Broker

C: 207-713-6995

O: 207-558-0893

tmillett@portacompany.com

This information has been obtained from sources believed reliable and is intended for informational use only. The information contained herein has not been verified for accuracy or completeness. It is recommended that prospective tenants and buyers conduct their own inspection of the property and verify all information. Any reliance on this information is solely at your own risk. Photos herein are the property of their respective owners. Use of these images without the express written consent of the owner is prohibited.

PORTA & CO.

COMMERCIAL REAL ESTATE

30 Milk Street, Second Floor

Portland, ME 04101

207-747-1515

www.portacompany.com