

# ±2,638 SQ. FT. | AMHERST MEDICAL OFFICE CONDO

7 NH RTE 101A, AMHERST, NH 03031



FOR SALE | \$240,000

**BERKSHIRE  
HATHAWAY**  
HOMESERVICES

VERANI  
REALTY

One Verani Way  
Londonderry, NH 03053  
o. 603-845-2500

[www.veranicommercial.com](http://www.veranicommercial.com)

 COMMERCIAL DIVISION™



**BEN MELLO**  
Associate Advisor  
c. 603.557.8012  
[ben.mello@verani.com](mailto:ben.mello@verani.com)

# CONTENTS

OVERVIEW	3
PROPERTY PHOTOS	4
AERIAL MAP	6
STREET MAP	7
SITE PLAN / FLOOR PLAN	8
ZONING	9



## OFFERING SUMMARY



Discover this outstanding medical/office condo in a well-appointed brick building with exceptional visibility. Located directly on NH 101A, the space offers unparalleled convenience with elevator access, ample parking, and a versatile floor plan suitable for a variety of uses.

Neighboring businesses include a pediatric dental practice, law office, and physical therapy clinic, making it ideal for complementary services. With only four units, this building provides a private and accessible setting for professionals.

Potential options include subdividing the unit for owner use while generating rental income. Positioned just around the corner from the intersection of NH 101 and 101A, the location benefits from a substantial average daily traffic count of 23,426. This is a rare opportunity in a highly sought-after, high-traffic area!

ASKING PRICE:	\$240,000
UNIT SIZE:	2,638 sf
YEAR BUILT:	1986
AADT:	23,426
ZONING:	C
# UNITS:	1



# PROPERTY PHOTOS



**BERKSHIRE  
HATHAWAY**  
HOMESERVICES

VERANI  
REALTY

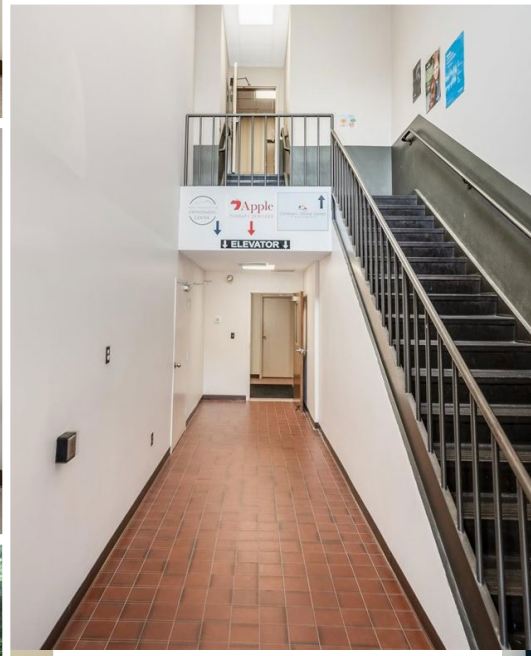
One Verani Way  
Londonderry, NH 03053  
o. 603-845-2500  
[www.veranicommercial.com](http://www.veranicommercial.com)

 COMMERCIAL DIVISION™



**BEN MELLO**  
Associate Advisor  
c. 603.557.8012  
[ben.mello@verani.com](mailto:ben.mello@verani.com)

# PROPERTY PHOTOS



**BERKSHIRE  
HATHAWAY**  
HOMESERVICES

VERANI  
REALTY

One Verani Way  
Londonderry, NH 03053  
o. 603-845-2500  
[www.veranicommercial.com](http://www.veranicommercial.com)

 COMMERCIAL DIVISION™



**BEN MELLO**  
Associate Advisor  
c. 603.557.8012  
[ben.mello@verani.com](mailto:ben.mello@verani.com)

# AERIAL MAP



**BERKSHIRE  
HATHAWAY**  
HOMESERVICES

VERANI  
REALTY

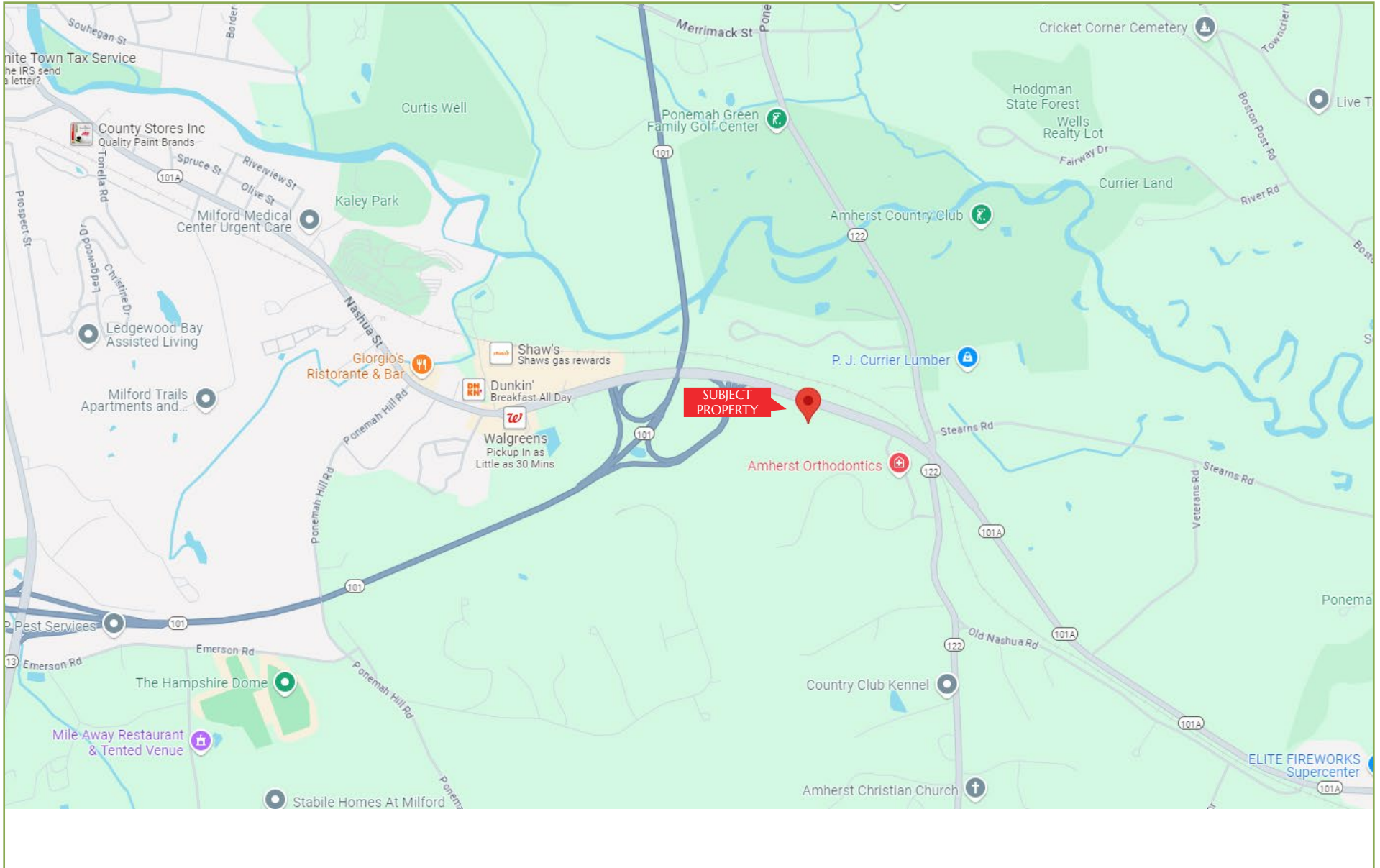
One Verani Way  
Londonderry, NH 03053  
o. 603-845-2500  
www.veranicommercial.com

 COMMERCIAL DIVISION™



**BEN MELLO**  
Associate Advisor  
c. 603.557.8012  
ben.mello@verani.com

# STREET MAP



**BERKSHIRE  
HATHAWAY**  
HOMESERVICES

VERANI  
REALTY

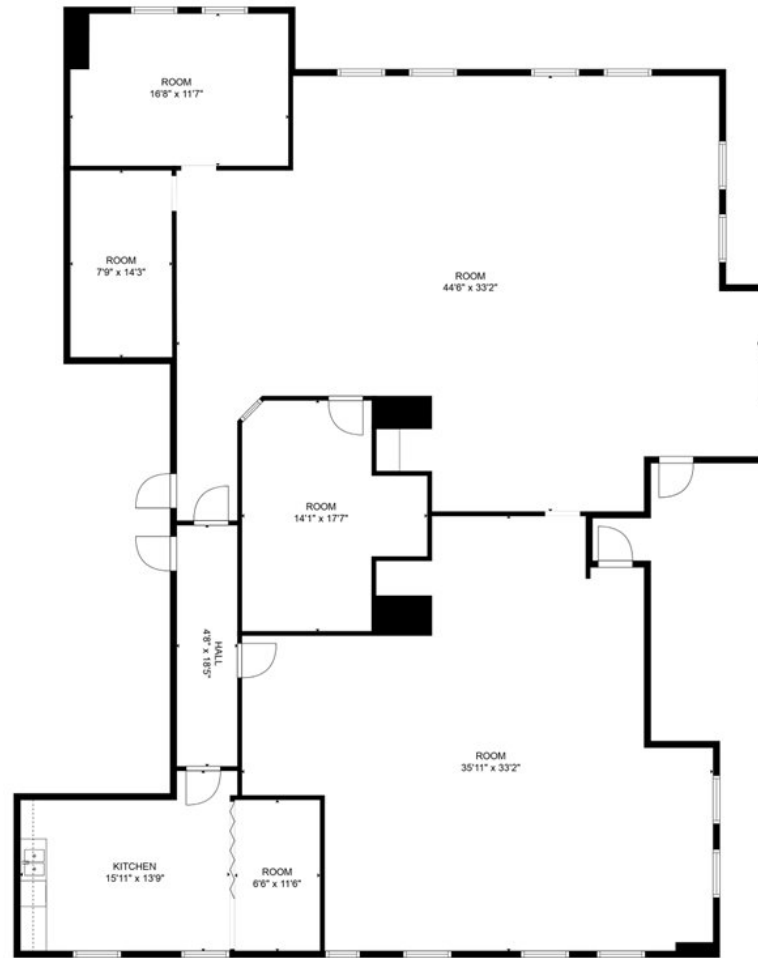
One Verani Way  
Londonderry, NH 03053  
o. 603-845-2500  
www.veranicommercial.com

 COMMERCIAL DIVISION™



**BEN MELLO**  
Associate Advisor  
c. 603.557.8012  
ben.mello@verani.com

# FLOOR PLAN



**TOTAL: 3036 sq. ft**  
**FLOOR 1: 3036 sq. ft**

FLOOR PLAN CREATED BY CUBICASA APP. MEASUREMENTS DEEMED HIGHLY RELIABLE BUT NOT GUARANTEED.



VERANI  
REALTY

One Verani Way  
Londonderry, NH 03053  
o. 603-845-2500



[www.veranicommercial.com](http://www.veranicommercial.com)



**BEN MELLO**  
Associate Advisor  
c. 603.557.8012  
[ben.mello@verani.com](mailto:ben.mello@verani.com)

## ZONING - COMMERCIAL ZONE C

### Section 4:7 Commercial Zone (C)

Section 4.7 Town of Amherst Zoning Ordinance Commercial Zone (C). (3-10-15) GENERAL PURPOSE. To provide commercial areas to serve major commercial and business needs of the general public. (3-14-78)

A. PERMITTED USES. Uses which include, but are not limited to the following: (3-13-90)

1. Retail establishments. (3-12-63)
2. Hotel and motels. (3-12-63, 3-14-78)
3. Public utility building, structure or facility. (3-14-78)
4. Home occupation. (11-2-82)
5. (Deleted 3-8-22)
6. Mixed-use development. (3-14-89) (See Art. IX Definitions)
7. Amateur, non-profit sports and recreation uses subject to obtaining Planning Board site approval which may provide at minimum for setbacks, buffers, sanitary facilities, parking, and traffic impact. Uses involving motorized recreation vehicles are prohibited. Night lighting may be allowed by the Planning Board when more than five hundred (500) feet from any residential use but not after 9:00 p.m. (3-12-91)

8. All family day care home facilities are subject to compliance with all current licensing procedures and all applicable health/safety ordinances for the State of New Hampshire and the Town of Amherst. Family day care facilities are regulated by RSA 170-E:1, 170-E:2, 204-C:72, 161-G:4, and all other applicable State Laws. (3-12-91, 3-10-92)

9. Accessory apartment (3-8-16)

B. USES PERMITTED BY SPECIAL EXCEPTION COMMERCIAL ZONE.

1. Outside recreation establishments exclusive of outdoor theaters. (3-2-76)
2. Outside storage of equipment and materials, but not including junk yards. (3-2-76)
3. Religious uses. (3-2-76)
4. Private schools. (3-2-76)
5. Hospitals, nursing homes and other similar uses. (3-2-76) \
6. (Deleted 3-8-16)
7. Kennels. (11-2-82)



**BERKSHIRE  
HATHAWAY**  
HOMESERVICES

VERANI  
REALTY



COMMERCIAL DIVISION<sup>SM</sup>

One Verani Way, Londonderry, NH 03053

o. 603-845-2500

[www.veranicommercial.com](http://www.veranicommercial.com)

While every effort is made to ensure the accuracy and reliability of the information contained here, neither Berkshire Hathaway HomeServices Verani Realty nor Ben Mello guarantee and are not responsible for the accuracy, completeness or reliability of the information contained herein. Use of such information is voluntary and reliance on it should only be undertaken after an independent review of its accuracy, completeness and reliability. © 2024 Berkshire Hathaway HomeServices Verani Realty, d/b/a Verani Realty, LLC