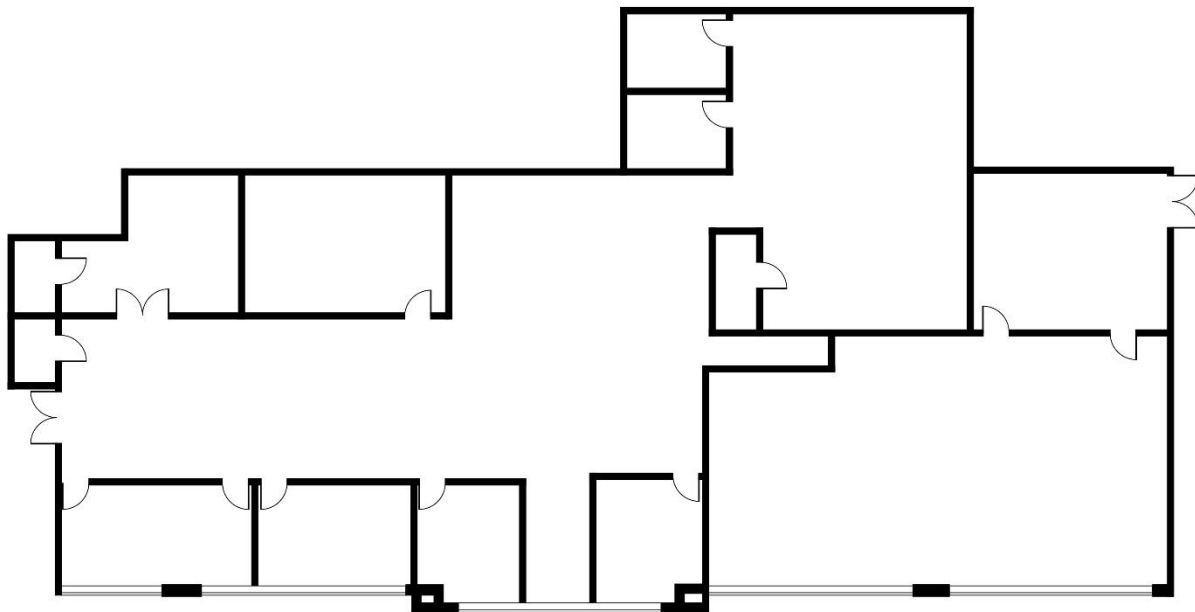


# MANCHESTER AIR CENTER

1050 PERIMETER ROAD

MANCHESTER, NEW HAMPSHIRE

## AVAILABLE FOR SUBLEASE | 8,000 SF



**8,000 RSF**

For more information, please contact:

**Thomas P. Farrelly, SIOR**  
+1 603 661 4854  
Executive Managing Director  
thomas.farrelly@cushwake.com

**Denis C.J. Dancoes II**  
+1 603 661 3854  
Executive Director  
denis.dancoes@cushwake.com

**Sue Ann Johnson**  
+1 603 490 6900  
Managing Director  
sueann.johnson@cushwake.com



**Cushman & Wakefield of  
New Hampshire, Inc.**  
650 Elm Street, 4th Floor  
Manchester, NH 03101  
**+1 603 628 2800**  
**cushmanwakefield.com**

The information contained in this communication is strictly confidential. NO WARRANTY OR REPRESENTATION, EXPRESS OR IMPLIED, IS MADE AS TO THE CONDITION OF THE PROPERTY (OR PROPERTIES) REFERENCED HEREIN OR AS TO THE ACCURACY OR COMPLETENESS OF THE INFORMATION CONTAINED HEREIN, AND SAME IS SUBMITTED SUBJECT TO ERRORS, OMISSIONS, CHANGE OF PRICE, RENTAL OR OTHER CONDITIONS, WITHDRAWAL WITHOUT NOTICE, AND TO ANY SPECIAL LISTING CONDITIONS IMPOSED BY THE PROPERTY OWNER(S). ANY PROJECTIONS, OPINIONS OR ESTIMATES ARE SUBJECT TO UNCERTAINTY AND DO NOT SIGNIFY CURRENT OR FUTURE PROPERTY PERFORMANCE.