

FOR LEASE



DOWNTOWN CAFÉ SPACE

25 CASCO STREET, PORTLAND, ME 04101

PROPERTY HIGHLIGHTS

- 627± SF of café space available for lease
- Great visibility with high foot traffic on Casco Street, close to numerous downtown amenities
- Located on the ground floor of Equality Commons, a vibrant, affordable 55+ community set to be available in June of 2026
- \$165,000 available to tenant for buildout- inquire with broker for details.
- Lease Rate: \$20.00/SF MG



THE BOULOS
COMPANY

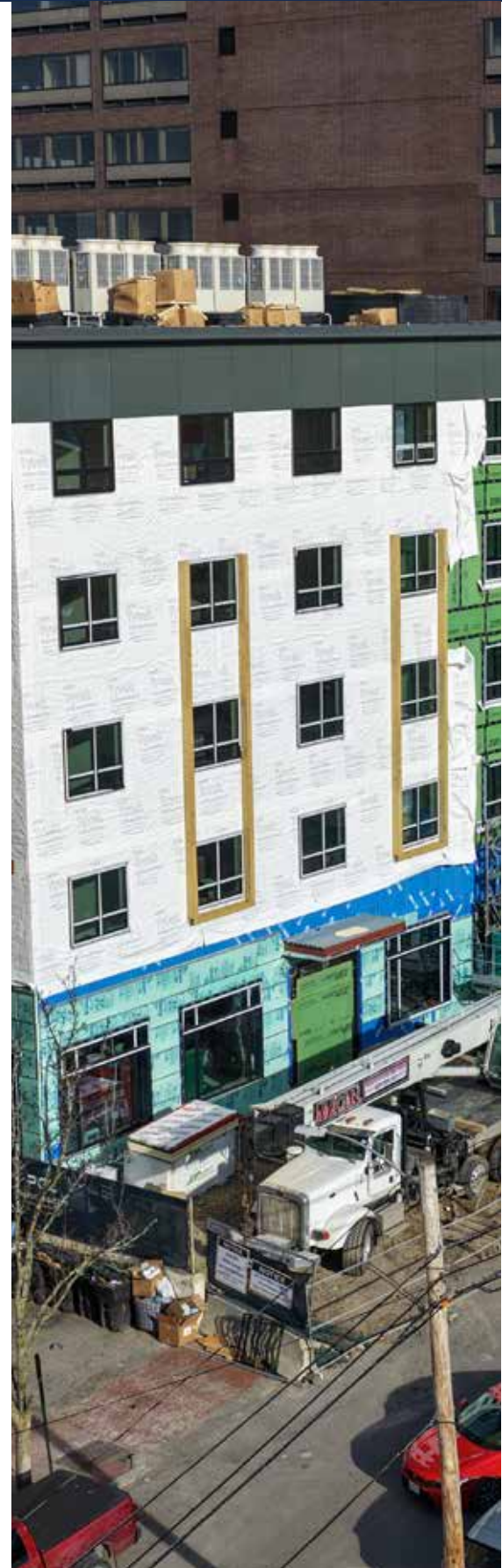
FOR LEASE | DOWNTOWN CAFÉ SPACE

25 CASCO STREET, PORTLAND, ME 04101



PROPERTY DETAILS

OWNER OF RECORD	Equality Community LP
BOOK/PAGE	41281/015
ASSESSOR'S REFERENCE	037/D005
BUILDING SIZE	44,494± SF
AVAILABLE SPACE	627± SF (first floor)
ZONING	B3
LOT SIZE	.3121± AC
BUILDING STATUS	Under construction
YEAR BUILT/ COMPLETION DATE	2026
# OF STORIES	Five (5)
UTILITIES	Municipal water & sewer
HVAC	Heat pump
SPRINKLERS	Dry system
RESTROOMS	One (1)
DATE AVAILABLE	June 2026
LEASE RATE	\$20.00/SF MG



FOR LEASE | DOWNTOWN CAFÉ SPACE
25 CASCO STREET, PORTLAND, ME 04101



CONTACT US



NATE ROOP
ASSOCIATE
207.553.1737 D
207.756.3002 C
NROOP@BOULOS.COM



CRAIG YOUNG, CCIM
PARTNER, BROKER
207.553.1714 D
207.329.8203 C
CYOUNG@BOULOS.COM

©2026 The Boulos Company, Inc. All rights reserved. This information has been obtained from sources believed reliable but has not been verified for accuracy or completeness. You should conduct a careful, independent investigation of the property and verify all information. Any reliance on this information is solely at your own risk. The Boulos Company and The Boulos Company logo are service marks of The Boulos Company, Inc. All other marks displayed on this document are the property of their respective owners. Photos herein are the property of their respective owners. Use of these images without the express written consent of the owner is prohibited.