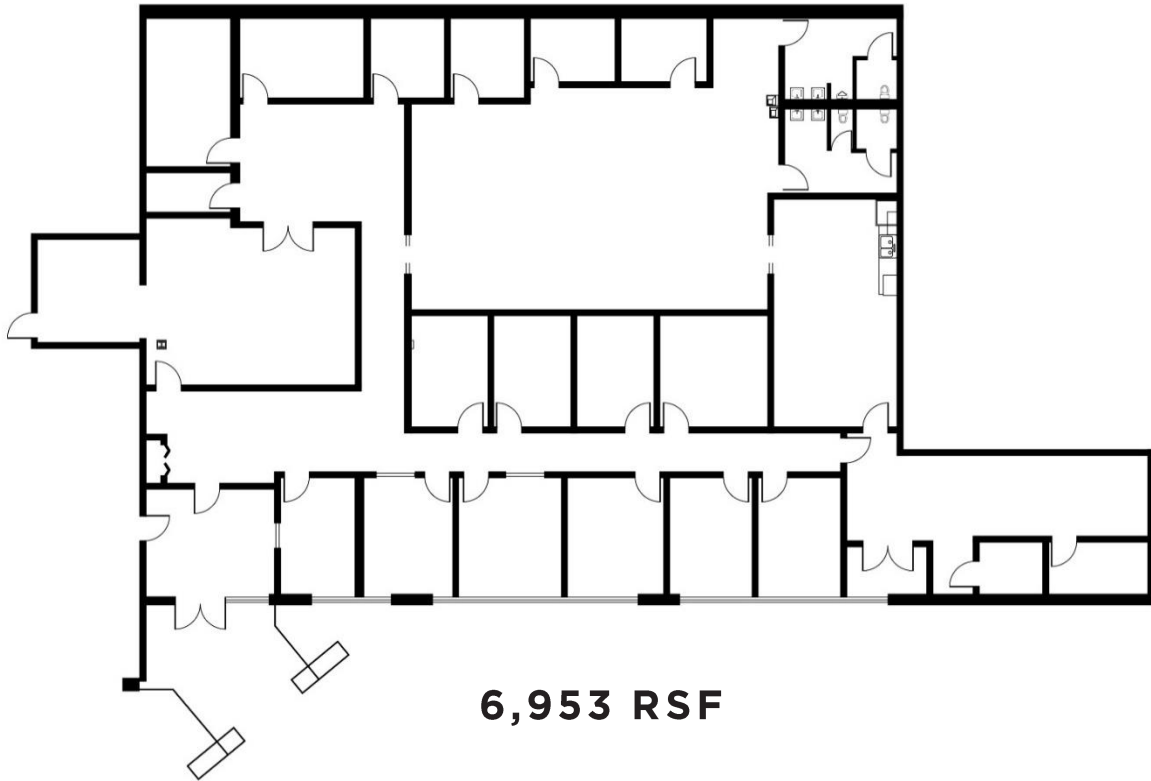
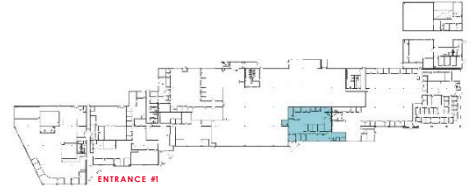


MANCHESTER AIR CENTER

1050 PERIMETER ROAD

MANCHESTER, NEW HAMPSHIRE

AVAILABLE FOR SUBLEASE | 6,953 SF



6,953 RSF

For more information, please contact:

Thomas P. Farrelly, SIOR
+1 603 661 4854
Executive Managing Director
thomas.farrelly@cushwake.com

Denis C.J. Dancoes II
+1 603 661 3854
Executive Director
denis.dancoes@cushwake.com

Sue Ann Johnson
+1 603 490 6900
Managing Director
sueann.johnson@cushwake.com



**Cushman & Wakefield of
New Hampshire, Inc.**
650 Elm Street, 4th Floor
Manchester, NH 03101
+1 603 628 2800
cushmanwakefield.com